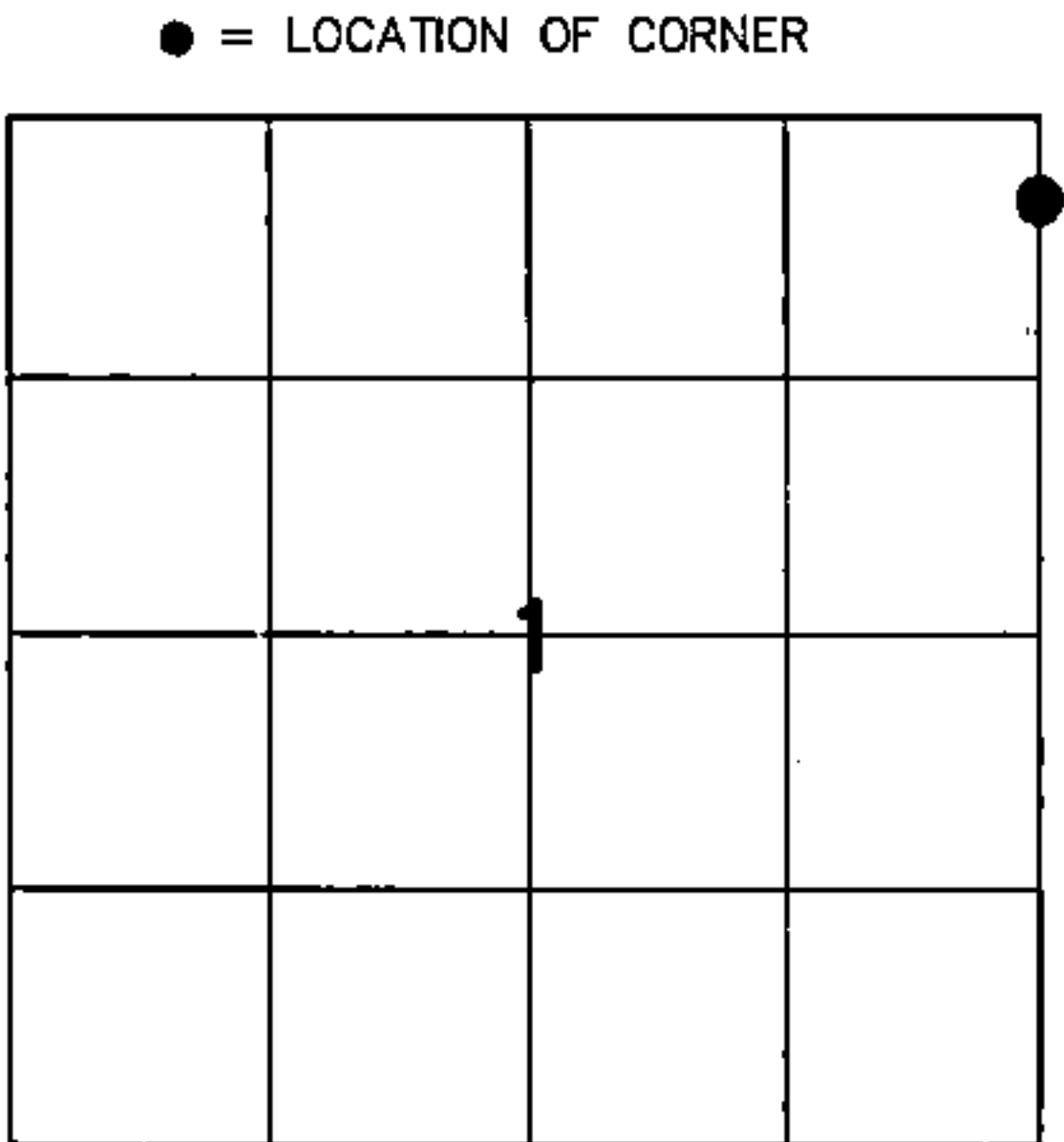


U.S. PUBLIC LAND SURVEY MONUMENT RECORD

HISTORY OF ORIGINAL CORNER ESTABLISHMENT AND SUBSEQUENT RESTORATION AND DESCRIPTION OF ANY RECORD, MONUMENT OCCUPATIONAL, TESTIMONIAL OR OTHER EVIDENCE CONSIDERED:

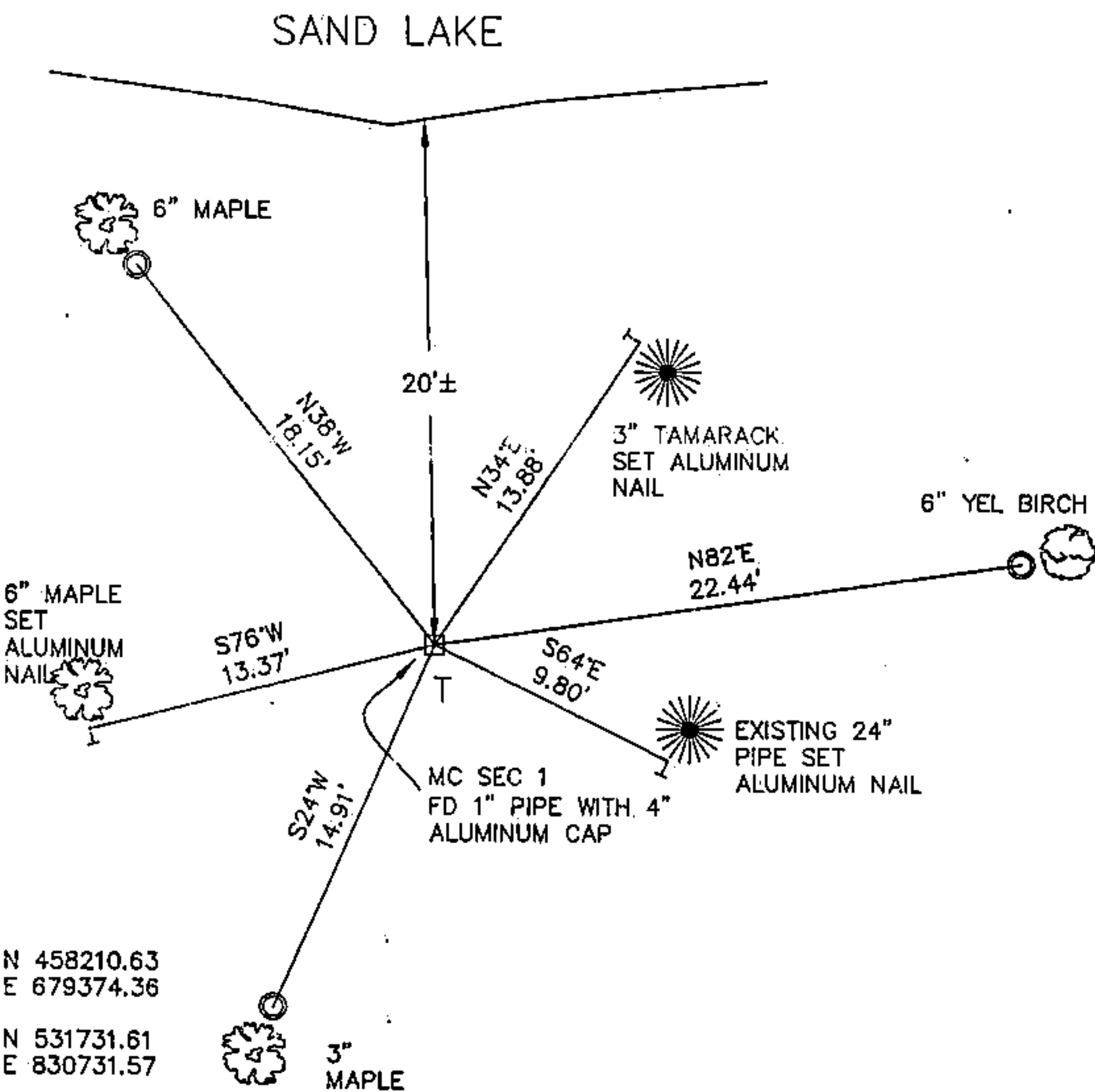
THE ORIGINAL CORNER WAS SET BY ALFRED MILLARD IN 1857 WITH THE ORIGINAL BEARING TREES OF:
WHITE PINE 20" S30W 90 LINKS
W BIRCH 12" S22E 72 LINKS
1990-KELLY FOUND THE 4 " ALUMINUM CAP AND SET ADDITION BEARING TREES AT S72E 10.10', S26E 22.55', S63W 30.39', N30W 16.22'
2016-I FOUND THE 1" PIPE WITH THE 4" ALUMINUM CAP AND SET TIES AS SHOWN



SECTION 1
TOWNSHIP 34 NORTH, RANGE 12 EAST
TOWN OF AINSWORTH
LANGLADE COUNTY, WISCONSIN

- CORNER WAS: (CHECK ALL THAT APPLY)
- ☐ RESTORED THROUGH ACCEPTANCE OF AN OBLITERATED EVIDENCE LOCATION
 - ☒ RESTORED THROUGH ACCEPTANCE OF A FOUND PERPETUATED LOCATION
 - ☐ CONSIDERED A LOST CORNER AND REESTABLISHED THROUGH LOST CORNER PROPORTIONATE METHODS (INCLUDE A PLAN VIEW DRAWING SHOWING DISTANCES AND DIRECTIONS TO OTHER PUBLIC LAND SURVEY CORNERS USED FOR PROPORTIONING AND DETERMINING THE CORNER LOCATION)
 - ☐ RESTORED OR REESTABLISHED IN A LOCATION THAT DIFFERS FROM A PREVIOUS RESTORATION OR RE-ESTABLISHMENT (INCLUDE A PLAN VIEW DRAWING AND INDICATE WHAT WAS SET AND/OR FOUND)
 - ☐ CHECK IF THERE IS ADDITIONAL INFORMATION ON BACK

DESCRIBE THE MONUMENT AND ACCESSORIES USED TO PERPETUATE THE LOCATION OF THE CORNER. (INCLUDE A PLAN VIEW DRAWING AND INDICATE WHAT WAS SET AND/OR FOUND) ALSO INCLUDE FOUR TIES TO THE SECTION CORNER AND DESCRIPTION OF THE TIES.

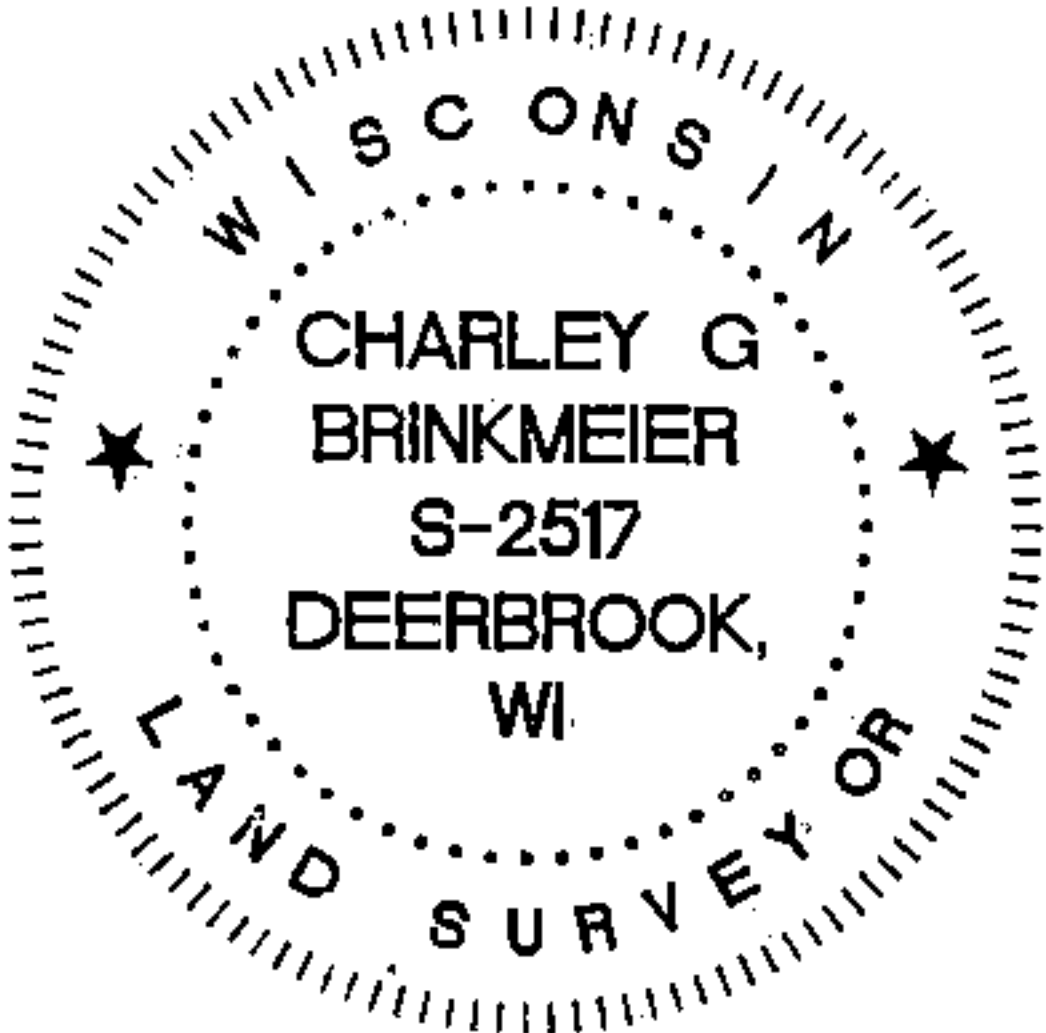


○ SET 3/4"X 30" IRON REBAR AT ALL TIE LOCATIONS
BEARINGS REFERENCED TO MAGNETIC
T - WHITE VINYL POST SET

FOREST COUNTY, WI
CORTNEY BRITTEN CLEEREMAN
REGISTER OF DEEDS
RECEIVED FOR RECORD

APR 27 2018

Time: 10:00 A.M.
Vol.: Corner Restoration
Page Number: A-1



CHARLEY G. BRINKMEIER

(type or print name) CERTIFY THAT THE CORNER LOCATION SHOWN ON THIS RECORD WAS DETERMINED BY ME OR UNDER MY DIRECTION AND CONTROL AND THAT THIS U.S. PUBLIC LAND SURVEY MONUMENT RECORD IS CORRECT AND COMPLETE TO THE BEST OF MY KNOWLEDGE AND BELIEF.

Charley G. Brinkmeier
SIGNATURE

1-17-17
DATE

43412013700

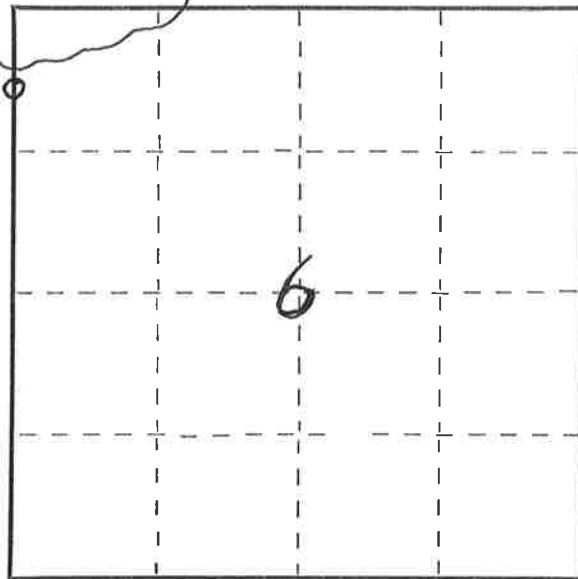
INDEX NO.

State of Wisconsin }
County of Forest } ss.

I, L. E. George, do hereby
certify that on the 21st day
of October, 19 75, I found
evidence of the Meander Corner
corner of Section 6
Township 34, North, Range
12 & 13 East, Fourth, Principal Meridian,
as described hereon; and that from this evidence
I established a new monument and accessories
as described hereon to perpetuate the original
location of this corner.

Resident witnesses:

Little Sand Lake



○ = Corner monument restored.

CERTIFIED LAND CORNER RESTORATION

Index No. AB 1

History of original corner establishment:
Wood post set in Original Survey.
White Pine 20 S30W 90 links
White Birch 12 S22E 72 links

Description of corner evidence found:

The stump of the original bearing tree, described in the original field notes as
"White Pine 20 S30W 90 links"
is still present, with a portion of the original scribe mark still visible. "Notch" is
also still visible.

Description of monument and accessories I established to perpetuate the original location of this corner.
Set a Galvanized iron pipe, three feet long, one inch in diameter, with an Aluminum cap
denoted as "Kimberly-Clark Corp. T34N R12-13E Witness Corner-Corner is 25 feet North"
The pipe is witnessed by:
White Pine 18 S70E 10.7 feet (Scribed S 6 WC NBT)
White Birch 8 S60W 30.5 feet (Scribed S 1 WC NBT)

Dated at Crandon, Wis., this 28th day of October

Signature L. E. George Title Land Surveyor Registration No. S 309
(County Surveyor, Registered Land Surveyor, or other duly authorized official)

Office of Register of Deeds, County of Forest, I hereby certify that the within
instrument was filed in this office for record on the 27th day of May, 19 77
at 11:15 o'clock A. M.

Eugene Staszny
(Register of Deeds)
By _____ Deputy

DOCUMENT NUMBER -- **111522**



43412013700