

247005

FILED ON:

10/21/2025 09:59 AM

CORTNEY BRITTEN CLEEREMAN
REGISTER OF DEEDS

FOREST COUNTY WI

PAGES: 1

U.S. PUBLIC LAND SURVEY MONUMENT RECORD

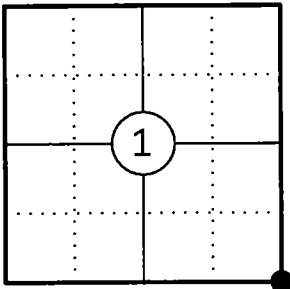
This form is intended and designed to fulfill all requirements of Wisconsin Administrative Code, Chapter A-E 7.08 U.S. Public Land Survey Monument Record (3) (a)(b)(c)(d)(e)(f)(g)(h)(i).

The coordinate value shown has been verified by at least one of the following methods: 1) Comparison to a previously GNSS determined published value; 2) The value is the average of two or more GNSS observations at a markedly different time; 3) One or more distances were measured back to the GNSS observed corner from temporary GNSS observed offset locations.

A-E 7.08(3)(a) Identity of the corner:

SE Corner Section 1	WISCRS - Forest County
Township 34 North	N: 526938.614 USFT
Range 13 East	E: 862249.532 USFT
Town of Nashville	Datum: NAD 83 (2011)
County of Forest	GNSS Method: WISCRS VRS Direct Observation

Corner ID: 43413010000



Original Corner Information:

Original Surveyor: Alfred Millard	Original B.T.'s: W Pine 40" - N25°W, 24 links
Date of Survey: August 1857	W Pine 12" - S40°W, 37 links
	Sugar 8" - S15°E, 72 links
	W Pine 22" - N80°E, 75 links

A-E 7.08(3)(b)(e)(f)(g) Describe any record evidence, monument evidence, occupational evidence, testimonial evidence or any other material evidence considered. Describe any discrepancy between the corner restored and any previously established location. State whether the corners was restored through acceptance of obliterated evidence, a found perpetuated location, or determined by proportionate methods.

1946 Hugh B. Crawford, Bureau of Land Management set a 6" dia. concrete monument from the remains of original bearing trees. He also made four new bearing trees.

03/27/1990 U.S. Public Land Survey Monument Record by Alan D. Harrison indicates he found a 6" dia. G.L.O. concrete monument with brass cap. (See corner form for prior history and additional information).

1988 Alan D. Harrison, Forest Co Surveyor File # 341407-19980000 found G.L.O. brass capped monument set by Hugh Crawford in 1946.

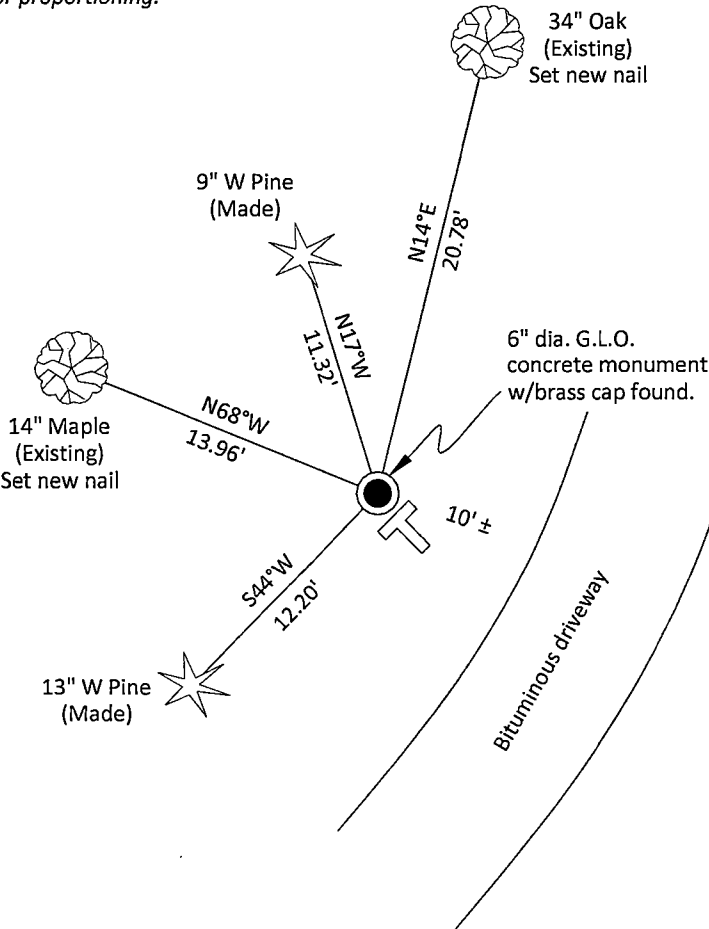
10/19/1990 Randy W. La Plant, Forest County Certified Survey Map V4 P118 found a G.L.O. concrete monument.

06/23/1999 Kim H. Pritzlaff, Forest Co Surveyor File # 341301-19990623 indicates a concrete monument with stamped brass cap.

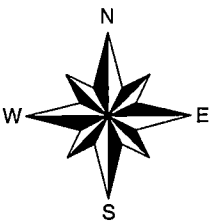
04/17/2015 Timothy J. Rusch, Forest Co Surveyor File # 341407-20150417 indicates a brass in concrete.

03/10/2025 I found and accepted a 6" dia. G.L.O. concrete monument with brass cap stamped to identify the corner flush with the ground and two existing bearing trees. I made two additional bearing trees to witness the corner as shown below. I did not put tags on the trees since it is near a residence.

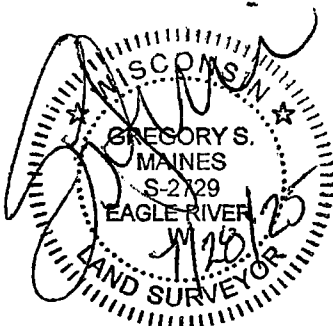
A-E 7.08(3)(c)(d)(e)(h) Plan view of corner with ties to at least four witnesses. If in disagreement with previously established corner, show the distances between the two corners and also indicate the tie to the disputed corner. Distances and directions to other PLSS used as evidence or for proportioning.



Bearings given to the nearest second are Forest County Grid all other bearings are magnetic



- * Steel sign post 1.6' southeast of corner.
- * Distances to bearing trees are to nail in side.
- * Sketch is not to scale



A-E 7.08(3)(i) - Certification

I, Gregory S. Maines, Professional Land Surveyor No. 2729, hereby certify that the corner location on this record was referenced by me or under my direction and control and that this U.S. Public Land Survey Monument Record is complete to the best of my knowledge and belief.

Index No.:

425

43413010000

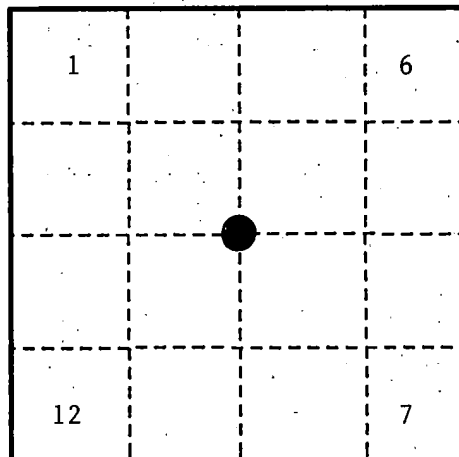
U. S. PUBLIC LAND SURVEY MONUMENT RECORD

INSTRUCTIONS:

This record shall show the location of the corner and shall include all of the following nine elements (a through i).

- (a) Identify the corner by reference to the U.S. public land survey system.
 ○ = Corner monument restored.

Corner common to Sections 6, 7, 1 and 12,
 T.34N., R.13-14E., Forest County, Wisconsin.



- (b) Describe any record evidence, monument evidence, occupational evidence, testimonial evidence or any other material evidence you considered, and whether the monument was found or placed.

In 1857, A. Millard set wood post and made the following B.T.'s: W. Pine, 40", N.45°W., 24 links (15.84 feet); W. Pine, 12", S.40°W., 37 links (24.42 feet); Sugar, 8", S.15°E., 72 links (47.52 feet); W. Pine, 22", N.80°E., 75 links (49.50 feet).

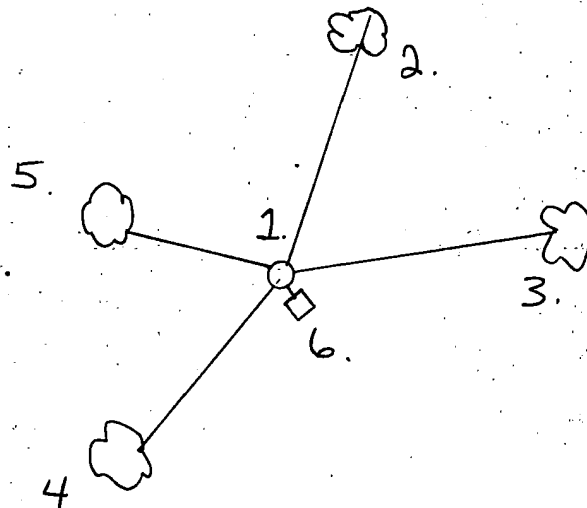
In 1946, H. Crawford, G.L.O. Surveyor found original B.T. remains. Set a G.L.O. concrete monument with brass cap and made the following B.T.'s: R. Oak, 17", N.14°E., 32 links (21.12 feet); Elm, 7", S.70 3/4°E., 52 links (34.32 feet); Maple, 7", S.56 3/4°W., 42 1/8 links (27.81 feet); Maple, 6", N.71 1/2°W., 21 links (13.86 feet).

In 1988, A. Harrison found corner as per Crawford with Elm B.T. dead and downed. Other B.T.'s alive. Made new references.

- (c) In the plan view drawing below, provide reference ties to at least 4 witness monuments, or, if the location is within a municipality, to at least 2 witness monuments. (witness monuments shall be made of concrete, natural stone, iron or other equally durable material.)

- (d) Show a plan view drawing depicting the relevant monuments and reference ties which is sufficient in detail to enable accurate relocation of the corner monument if the corner monument is disturbed. Indicate north.

1. 6" diameter concrete monument with brass cap.
2. Db1. R. Oak, 27", N.12°E., 21.33 feet.
3. Sugar, 11", N.78°E., 29.28 feet.
4. Sugar, 9", S.57°W., 28.68 feet.
5. Sugar, 8", N.72°W., 13.99 feet.
6. Steel sign post, Southeast, 1.82 feet.



REGISTER'S OFFICE
 Forest County, Wis.

Received for record this 29th day
 of March, A.D., 1990 at
10:00 o'clock A.M. and recorded
 in Vol. CORNER RESTORATIONS
 page E-1
Paul A. Schenck
 Register of Deeds

(a) Describe any material discrepancy between the location of the corner as restored or reestablished and the location of that corner as previously restored or reestablished by distance and direction. Show the discrepancy on the plan view drawing under (d), above. Show the distances between the corner as previously restored or reestablished and (1) the corner as restored or reestablished, and (2) to at least 2 of the witness monuments shown on the drawing in (d), above.

None.

(f) Was the corner restored through acceptance of (1) an obliterated evidence location, or, (2) a found perpetuated location?

(2) a found perpetuated location

(g & h) Was the corner reestablished through lost corner proportionate methods? If so, show the method, including the directions and distances to other public land survey corners used as evidence or used for proportioning in determining the corner location?

No.

(1) I, Alan D. Harrison

(type or print name) certify that the corner location shown on this record was determined by me or under my direction and control and that this U.S. Public Land Survey Monument Record is correct and complete to the best of my knowledge and belief.

Signature

Date

CERTIFICATE READY FOR FILING:

Dale B. Staeger
District Ranger

