

NOV 08 2023

CORTNEY BRITTEN CLEEREMAN
REGISTER OF DEEDS

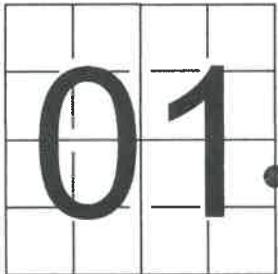
241601

U S PUBLIC LAND SURVEY MONUMENT RECORD - ADDENDUM

NOTE: This form is intended and designed to fulfill all requirements of Wisconsin Administrative Code, Chapter A-E 7.08 U.S. Public Land Survey Monument Record (3) (a-i)

A-E 7.08(3)(a) Identity of corner:
MEANDER CORNER EAST LINE OF
SECTION 01, TOWNSHIP 34 NORTH,
RANGE 13 EAST OF THE 4TH PM,
TOWN OF NASHVILLE,
COUNTY OF FOREST

WISCORS - FOREST COUNTY
N: 528,702.144 USft (XXX,XXX.XXX)
E: 862,312.673 USft (XXX,XXX.XXX)
Datum: NAD83 (2011)
GNSS Method RTK
Base from GNSS Control set WISCORS VRS



The coordinate value shown has been verified by the average of two or more GPS observations at a markedly different time. Coordinates shown in parenthesis are previously published values.

A-E 7.08(3)(b)

Original Surveyor: Alfred Millard

Date of Original Survey Commenced: August, 1857
 Completed: August, 1857
 36" W. Pine for meander corner

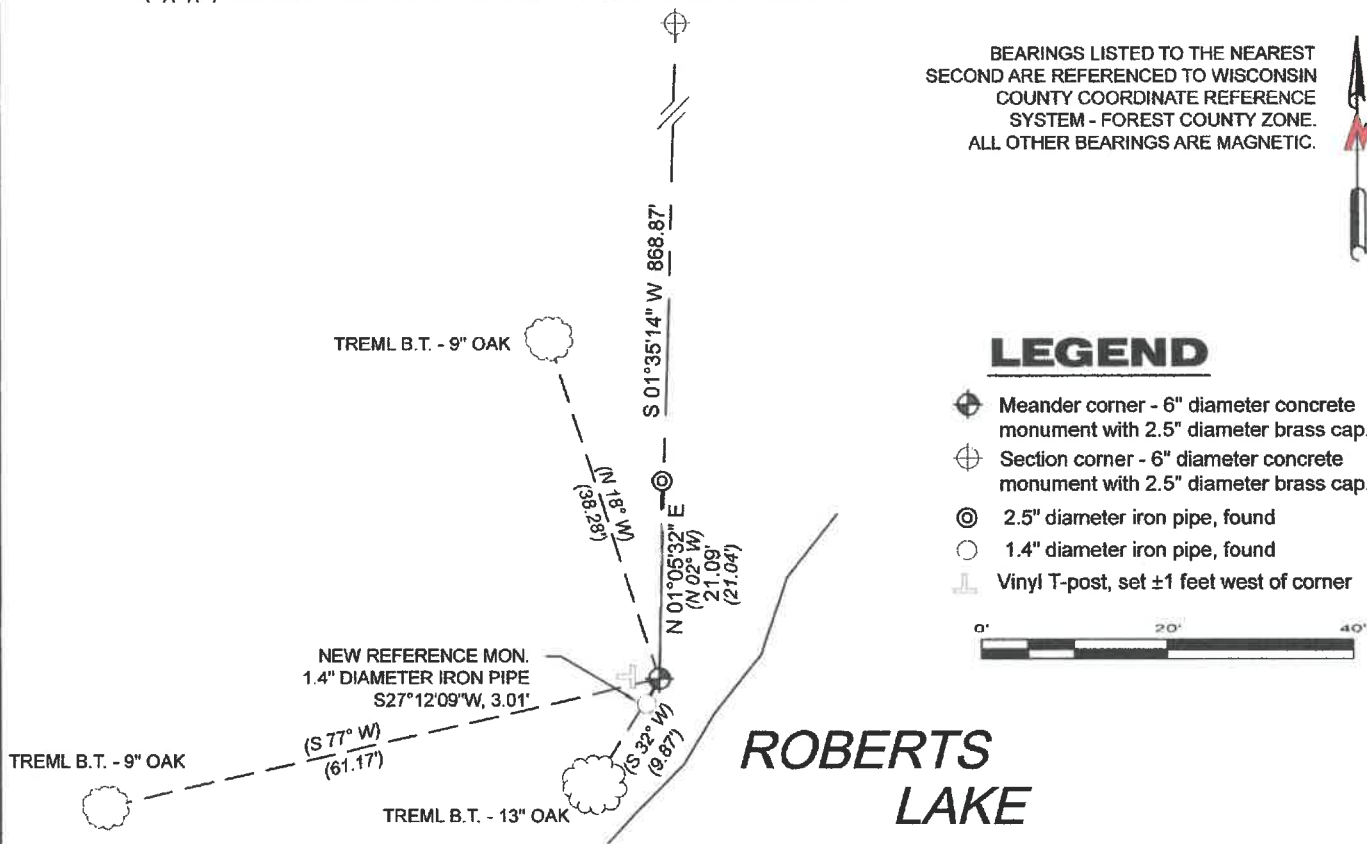
Original Accessories:
W. Pine 18 N 39° E 17 Links
W. Pine 14 S 70° W 33 Links

See U.S. Public Land Survey Monument Record - C, D-1 - July 15, 2002 - Surveyor 2197 - Michael A. Tremi - THENCE:

September 22, 2010 - Surveyor 2197 - Michael A. Tremi - indicate this position as "existing 6" dia. con. mon. w/brass cap" on Forest Co. Surveyor File #341301-20100922.

February 28, 2023 - I found a 6" diameter concrete monument with a 2.5" diameter brass cap stamped to identify the corner affixed to the top. I also found all of Tremi's bearing trees. I established 1 new reference monuments as shown below.

A-E 7.08(3)(c)(d) Plan view of corner with references to at least 4 witness monuments.



A-E 7.08(3)(e) 1857 Surveyor set a post, 2002 Surveyor found a 6" diameter concrete monument with a stamped brass cap. I found a 6" diameter concrete monument with a 2.5" diameter brass cap stamped to identify corner.

A-E 7.08(3)(f) I accept this monument as a FOUND PERPETUATED LOCATION of the corner.

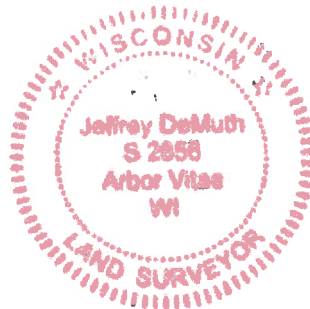
A-E 7.08(3)(g)(h) This corner was not determined through lost-corner-proportionate methods.

A-E 7.08(3)(i) I, Jeffrey L. DeMuth, Professional Land Surveyor No. S-2656, hereby certify that the corner location on this record was determined by me or under my direction and control, and that this U.S. Public Land Survey Monument Record is correct and complete to the best of my knowledge, and belief.

SIGNATURE

March 6, 2023

DATE



43413011400

C-D1

Document Number

176286

U.S. PUBLIC LAND SURVEY MONUMENT RECORD

(As Required by WI Adm. Code)

History of original corner establishment and subsequent restorations and descriptions of any record, monument, occupational, testimonial or other evidence considered:

- 1857 – Alfred Millard, marked a 36" Dia. W. Pine for Meander Corner and made the following B.T.'s:
W. Pine 18", N 39° E, 17 lks., 11.22 feet
W. Pine, 14", S 70° W, 33 lks., 21.78 feet.
- 1946 – The U.S. General Land Office performed a Dependent Resurvey of Section 6, T34N R14E. The meander corner was recovered in that survey and was mentioned as a rotted pine stump. A 6" dia. X 24" long concrete monument with a stamped brass cap was set at this location. The following new B.T.'s were made: Elm 6", N 62 1/2° E, 34 lks. 22.44 feet
W. Pine 18", N 36 3/4° W, 122.5 lks, 80.85 feet
- 2002 – I found the 6" dia. concrete monument mentioned above in excellent condition. Made the following new B.T.'s: Oak 13", S 32° W, 9.87 feet; Oak 9", N 18° W, 38.28 feet
Oak 9", S 77° W, 61.17 feet; 2" Iron Pipe, N 02° E, 21.04 feet

Corner was: (Check All That Apply)

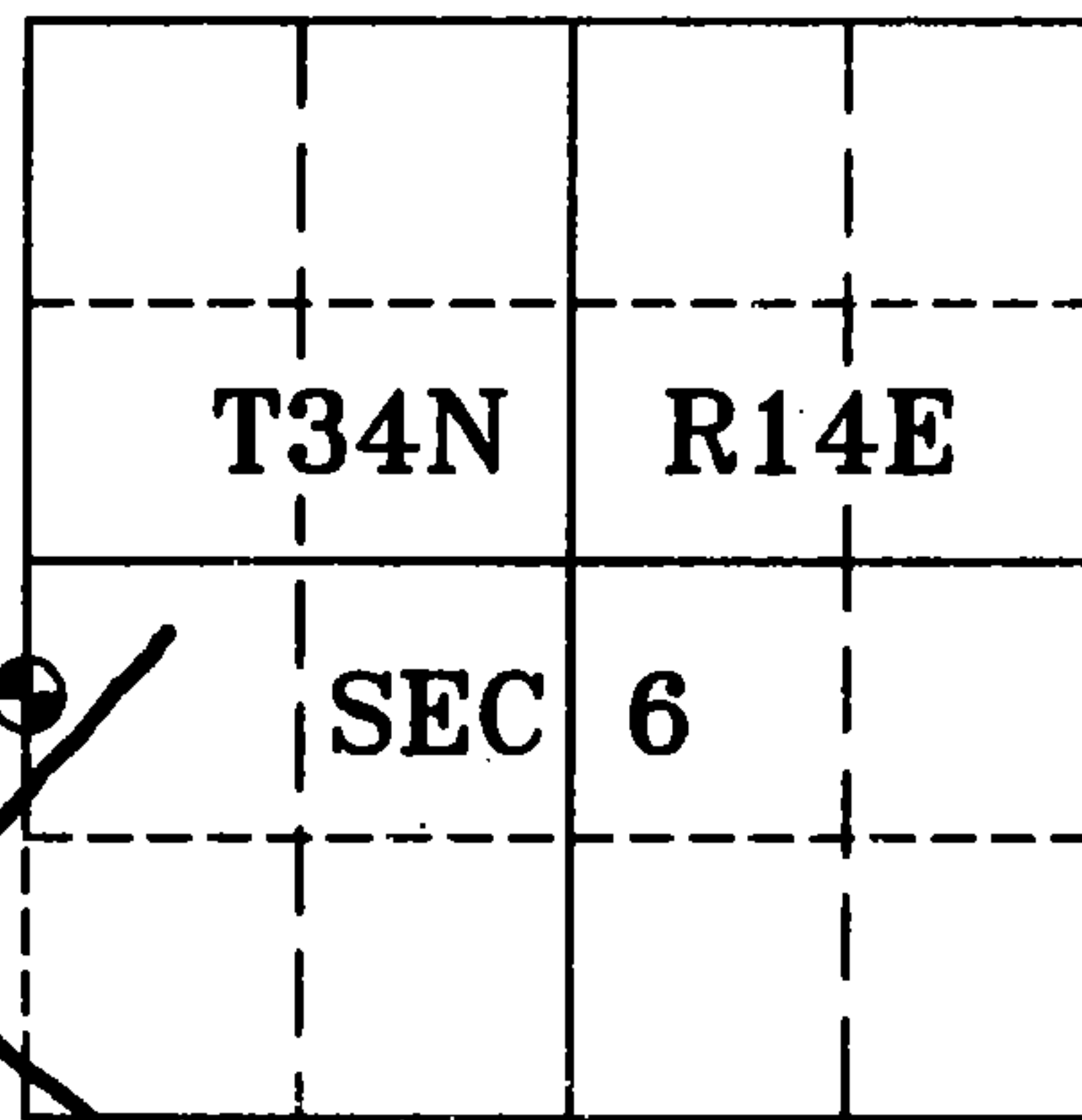
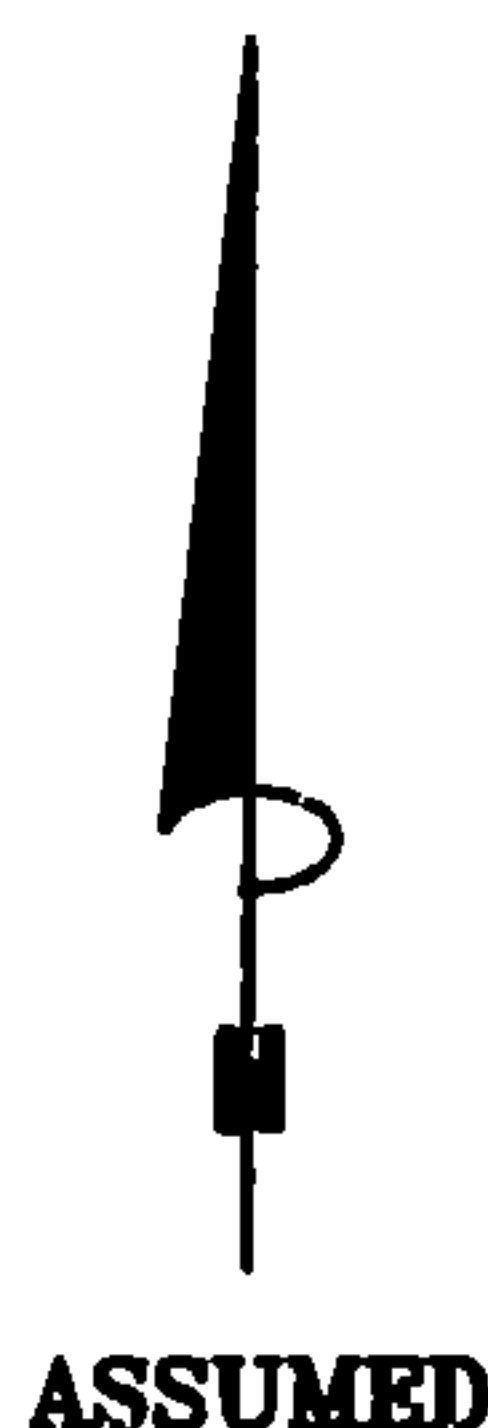
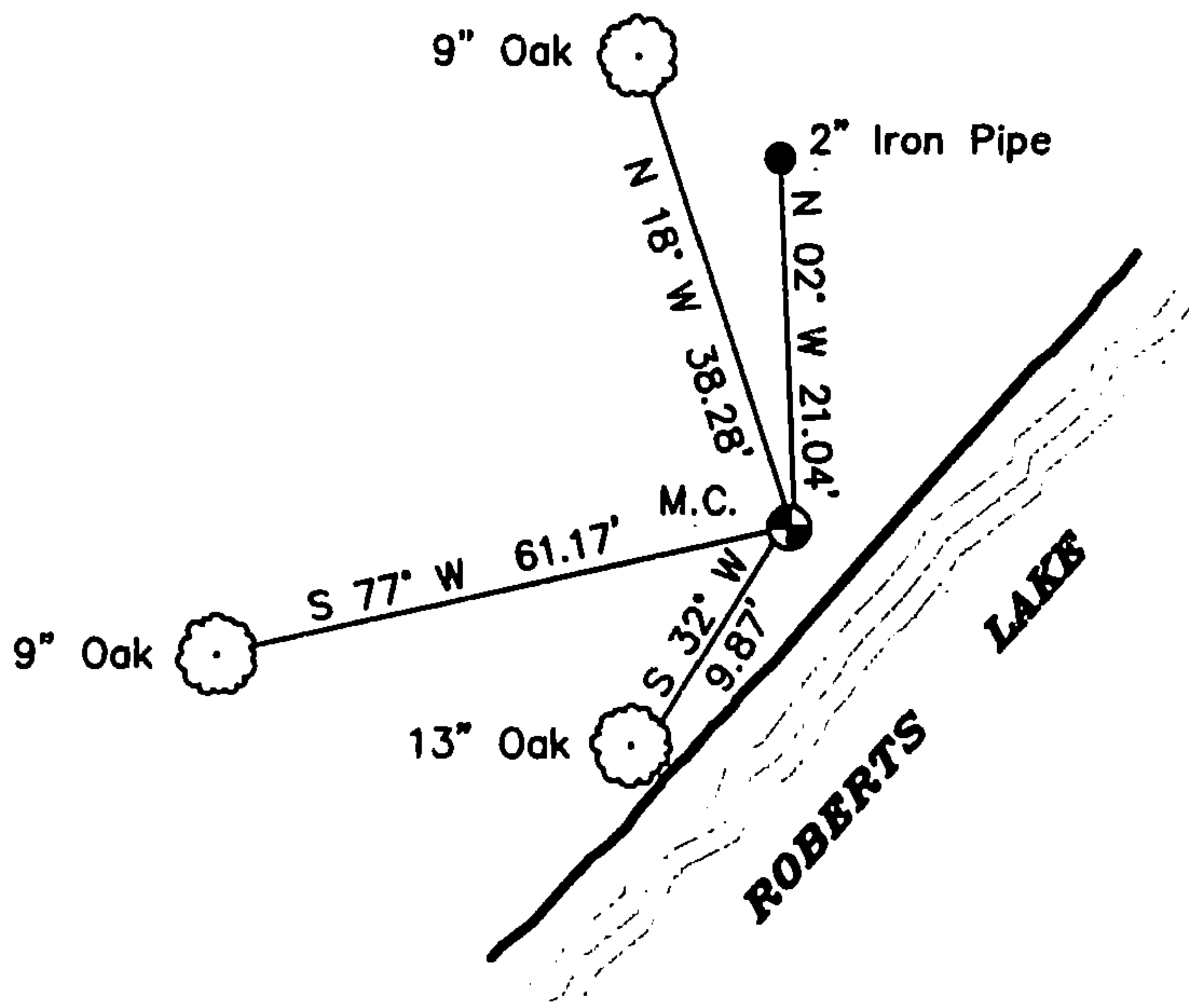
- ☐ Restored through acceptance of an obliterated evidence location.
☒ Restored through acceptance of a found perpetuated location.
☐ Considered a lost corner and reestablished through lost corner proportionate methods (include a plan view drawing showing distances and directions to other Public Land Survey Corners used for proportioning and determining the corner location).
☐ Restored or reestablished in a location that differs from a previous restoration or reestablishment (include a plan view drawing and indicate what was set and/or found).

Describe the monument and accessories used to perpetuate the location of this corner (include a plan view drawing and indicate what was set and/or found).

LEGEND:

- Found 6" dia. Con. Mon.
W/Stamped Brass Cap

Note: All distances are taken to nail in side of tree.



I, Michael A. Trembl, RLS
(type or print name) certify that the corner location shown on this record was determined by me or under my direction and control and that this U.S. Public Land Survey Monument Record is correct and complete to the best of my knowledge and belief.

Signature: Michael A. Trembl Date: 7/15/02

The North Meander corner of
Section 6 T. 34 N., R. 14 E.
Forest County, WI

Index No. C,D-1

43413011400