

U.S. PUBLIC LAND SURVEY MONUMENT RECORD

This form is intended and designed to fulfill all requirements of Wisconsin Administrative Code, Chapter A-E 7.08 U.S. Public Land Survey Monument Record (3) (a)(b)(c)(d)(e)(f)(g)(h)(i).

The coordinate value shown has been verified by at least one of the following methods: 1) Comparison to a previously GNSS determined published value; 2) The value is the average of two or more GNSS observations at a markedly different time; 3) One or more distances were measured back to the GNSS observed corner from temporary GNSS observed offset locations.

A-E 7.08(3)(a) Identity of the corner:

SE Corner Section 2  
Township 34 North  
Range 13 East  
Town of Nashville  
County of Forest

WISCRS - Forest County  
N: 526926.055 USFT  
E: 857069.692 USFT  
Datum: NAD 83 (2011)  
GNSS Method: WISCORS VRS Direct Observation

Original Corner Information:

Original Surveyor: J.L. Nowlin  
Date of Survey: October 1865

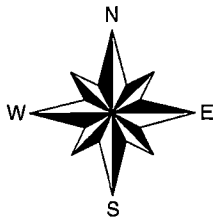
Original B.T.'s: Hemlock 10" - N61°E, 20 links  
Hemlock 12" N56°W, 6 links

A-E 7.08(3)(b)(e)(f)(g) Describe any record evidence, monument evidence, occupational evidence, testimonial evidence or any other material evidence considered. Describe any discrepancy between the corner restored and any previously established location. State whether the corners was restored through acceptance of obliterated evidence, a found perpetuated location, or determined by proportionate methods.

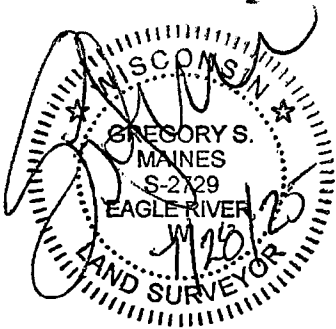
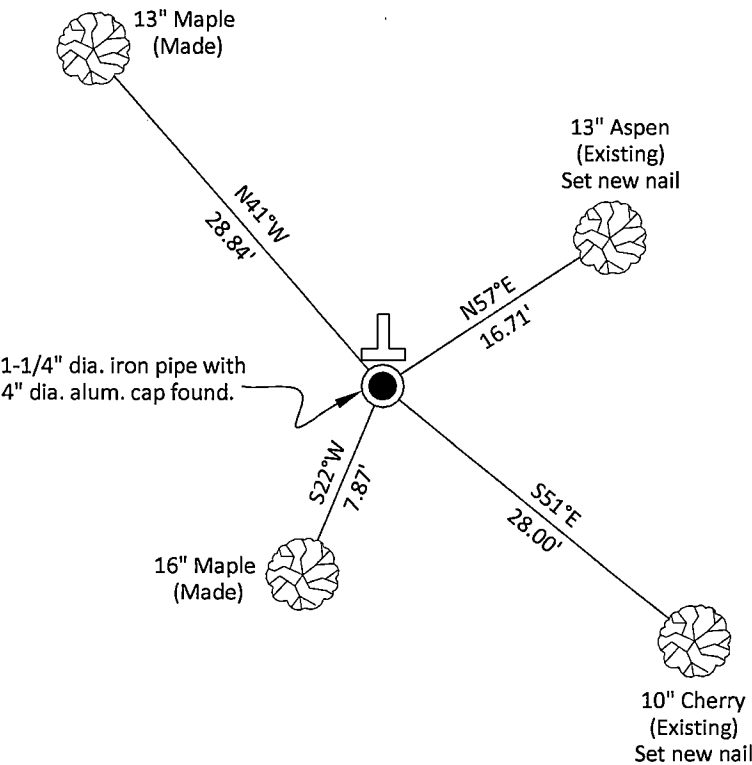
- 08/25/1964 Certified Land Corner Restoration by Neal Sperhake indicates he set a 1" dia. iron pipe with a Kimberly Clark Corp aluminum cap from an existing original bearing tree and made four new bearing trees. (See corner form for prior history and additional information).
- 12/22/2006 Timothy J. Rusch, Forest Co Surveyor File # 341302-20061222 found an aluminum capped iron pipe.
- 10/25/2013 Timothy J. Rusch, Forest Co Surveyor File 341335-20131025 found an aluminum capped monument.
- 03/11/2025 I found and accepted a 1-1/4" dia. iron pipe with a Kimberly Clark Corp 4" dia. aluminum cap stamped to identify the corner 12" above grade and two existing bearing trees. I made two additional bearing trees to witness the corner as shown below.

A-E 7.08(3)(c)(d)(e)(h) Plan view of corner with ties to at least four witnesses. If in disagreement with previously established corner, show the distances between the two corners and also indicate the tie to the disputed corner. Distances and directions to other PLSS used as evidence or for proportioning.

Bearings given to the nearest second are Forest County Grid all other bearings are magnetic



- \* Vinyl "T" post 0.9' north of corner.
- \* Distances to bearing trees are to nail in side with BT tag on tree.
- \* Sketch is not to scale



A-E 7.08(3)(i) - Certification  
I, Gregory S. Maines, Professional Land Surveyor No. 2729, hereby certify that the corner location on this record was referenced by me or under my direction and control and that this U.S. Public Land Survey Monument Record is complete to the best of my knowledge and belief.

247007

FILED ON:

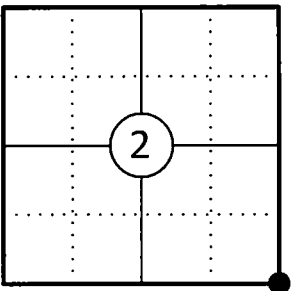
10/21/2025 09:59 AM

CORTNEY BRITTEN CLEEREMAN  
REGISTER OF DEEDS

FOREST COUNTY WI

PAGES: 1

Corner ID: 43413020000

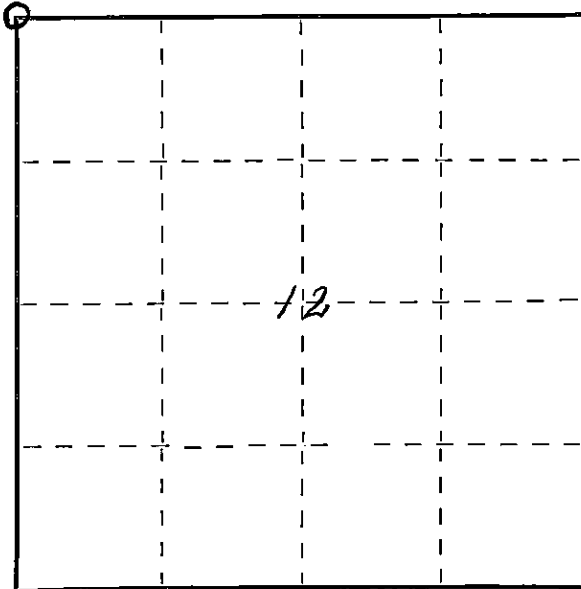


43413020000

State of Wisconsin }  
County of FOREST } ss.

I NEAL SPERHAKE, do hereby  
certify that on the TWENTY-FIRST day  
of OCTOBER, 19 63, I found  
evidence of the NORTHWEST SECTION  
corner of SECTION 12  
Township 34, North, Range  
13 EAST, Fourth Principal Meridian,  
as described hereon; and that from this evidence  
I established a new monument and accessories  
as described hereon to perpetuate the original  
location of this corner.

Resident witnesses:



○ = Corner monument restored.

CERTIFIED LAND CORNER RESTORATION

88937

Index No.

E-21  
E 21

History of original corner establishment:

This corner can also be described as: THE SECTION CORNER COMMON TO SECTIONS 1, 2, 11, 12,  
T34N-R13E, 4TH P.M.

This corner was established during the original survey of this township, as noted in the  
original field notes for the original survey of T34N-R13E, 4th. P.M.

Description of corner evidence found:

The original bearing tree, described in the original field notes as:

"Hemlock 12 N 22°W 15 links"

is still present at this date, with a portion of the original scribe marks still visible.

Description of monument and accessories I established to perpetuate the original location of this corner.

At the site of the original post, as determined from the existing original bearing  
tree noted above, I emplaced a "Galvanized iron pipe, three feet long, one inch in  
diameter, with an aluminum cap denoted as, 'Kimberly-Clark Corp. T34N 1, 2, 11, 12  
R13E Sperhake RLS 463 10/21/63."

The pipe is witnessed by:

Aspen	6	N 78°E	26½ links.	(SCRIBED S 1 NBT).
B. Cherry	8	N 66°W	66 links.	(SCRIBED S 2 NBT).
Maple	4	S 59°W	73½ links.	(SCRIBED S11 NBT).
B. Cherry	7	S 55°E	43 links.	(SCRIBED S12 NBT).

Dated at Crandon, Wis., this 25 day of Aug., 19 64.

Signature Neal Sperhake Title Registered Land Surveyor Registration No. 463  
(County Surveyor, Registered Land Surveyor, or other duly authorized official)

Office of Register of Deeds, County of Forest, I hereby certify that the within  
instrument was filed in this office for record on the 25 day of Aug., 19 64  
at 2:00 o'clock P M.

Anna Peterson Subscribed & sworn to before me by Neal  
(Register of Deeds) Sperhake this 25 day of Aug. 1964  
Anna Peterson  
Notary Public, Forest Co., Wis.  
Com. expires 10/31/65

By \_\_\_\_\_ Deputy

43913020000