

U.S. PUBLIC LAND SURVEY MONUMENT RECORD

This form is intended and designed to fulfill all requirements of Wisconsin Administrative Code, Chapter A-E 7.08 U.S. Public Land Survey Monument Record (3) (a)(b)(c)(d)(e)(f)(g)(h)(i).

The coordinate value shown has been verified by at least one of the following methods: 1) Comparison to a previously GNSS determined published value; 2) The value is the average of two or more GNSS observations at a markedly different time; 3) One or more distances were measured back to the GNSS observed corner from temporary GNSS observed offset locations.

247010

FILED ON:

10/21/2025 09:59 AM

CORTNEY BRITTEN CLEEREMAN

REGISTER OF DEEDS

FOREST COUNTY WI

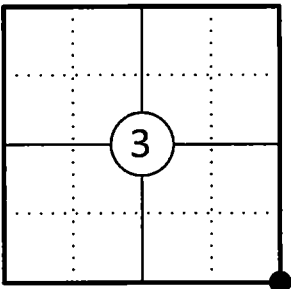
PAGES: 1

A-E 7.08(3)(a) Identity of the corner:

SE Corner Section 3
Township 34 North
Range 13 East
Town of Nashville
County of Forest

WISCRS - Forest County
N: 526935.255 USFT
E: 851817.956 USFT
Datum: NAD 83 (2011)
GNSS Method: WISCORS VRS Direct Observation

Corner ID: 43413030000



Original Corner Information:

Original Surveyor: J.L. Nowlin
Date of Survey: October 1865

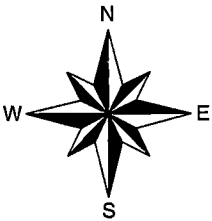
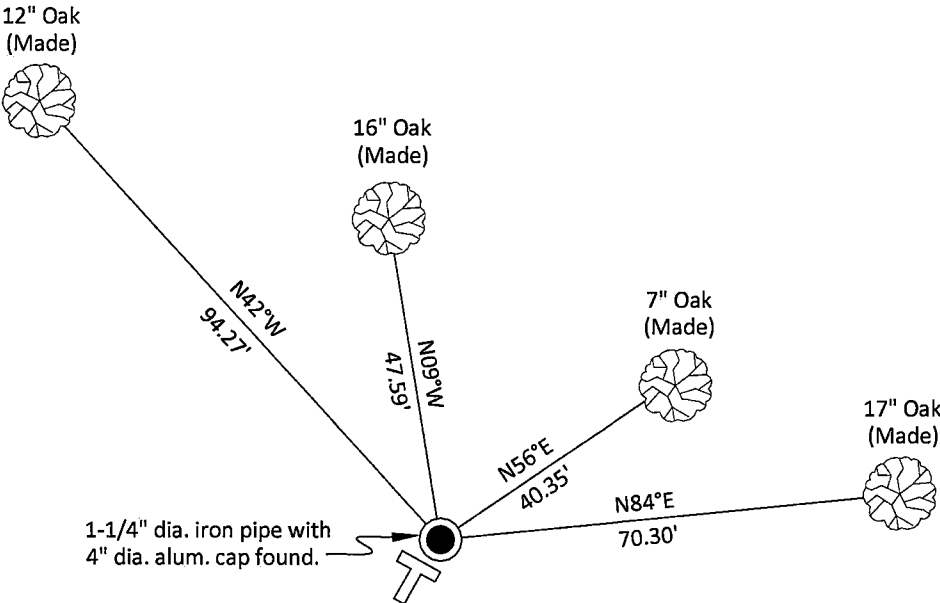
Original B.T.'s: W Pine 15" - N4°W, 60 links
W Birch 12" - N20°E, 53 links

A-E 7.08(3)(b)(e)(f)(g) Describe any record evidence, monument evidence, occupational evidence, testimonial evidence or any other material evidence considered. Describe any discrepancy between the corner restored and any previously established location. State whether the corners was restored through acceptance of obliterated evidence, a found perpetuated location, or determined by proportionate methods.

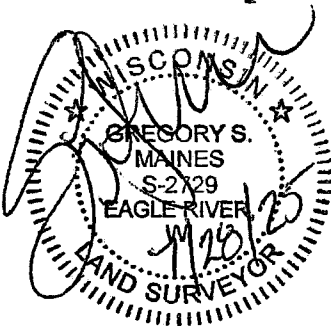
- 10/28/1963 Restoration of Lost Original Government Survey Corner by Neal Sperhake indicates he set a 1" dia. iron pipe with a Kimberly Clark Corp. aluminum cap and made three new bearing trees. (See corner form for prior history and additional information).
- 08/22/2008 Michael A. Trembl, Forest Co Surveyor File # 341310-20080822 found a 1" dia. iron pipe with 4" alloy cap.
- 10/25/2013 Timothy J. Rusch, Forest Co Surveyor File # 341335-20131025 found an aluminum capped monument.
- 06/05/2015 Timothy J. Rusch, Forest Co Surveyor File # 341303-20150605 found an aluminum capped monument.
- 03/27/2025 I found and accepted a 1-1/4" dia. iron pipe with a Kimberly Clark Corp. 4" dia. aluminum cap stamped to identify the corner flush with the ground in an open swamp. This corner fits well with surveys of record. I made four new bearing trees to witness the corner as shown below.

A-E 7.08(3)(c)(d)(e)(h) Plan view of corner with ties to at least four witnesses. If in disagreement with previously established corner, show the distances between the two corners and also indicate the tie to the disputed corner. Distances and directions to other PLSS used as evidence or for proportioning.

Bearings given to the nearest second are Forest County Grid all other bearings are magnetic



- * Vinyl "T" post 0.8' southwest of corner.
- * Distances to bearing trees are to nail in side with BT tag on tree.
- * Sketch is not to scale



A-E 7.08(3)(i) - Certification
I, Gregory S. Maines, Professional Land Surveyor No. 2729, hereby certify that the corner location on this record was referenced by me or under my direction and control and that this U.S. Public Land Survey Monument Record is complete to the best of my knowledge and belief.

Index No.: E14

43413030000

State of Wisconsin
County of FOREST

ss. RESTORATION OF LOST ORIGINAL GOVERNMENT SURVEY CORNER.

I NEAL SPERHAKE, do hereby certify that on the TWENTY-EIGHTH day of OCTOBER, 1963, I established the NORTHWEST SECTION CORNER OF SECTION 11, TOWNSHIP 34 NORTH, RANGE 13 EAST, Fourth Principal Meridian,
as described hereon.

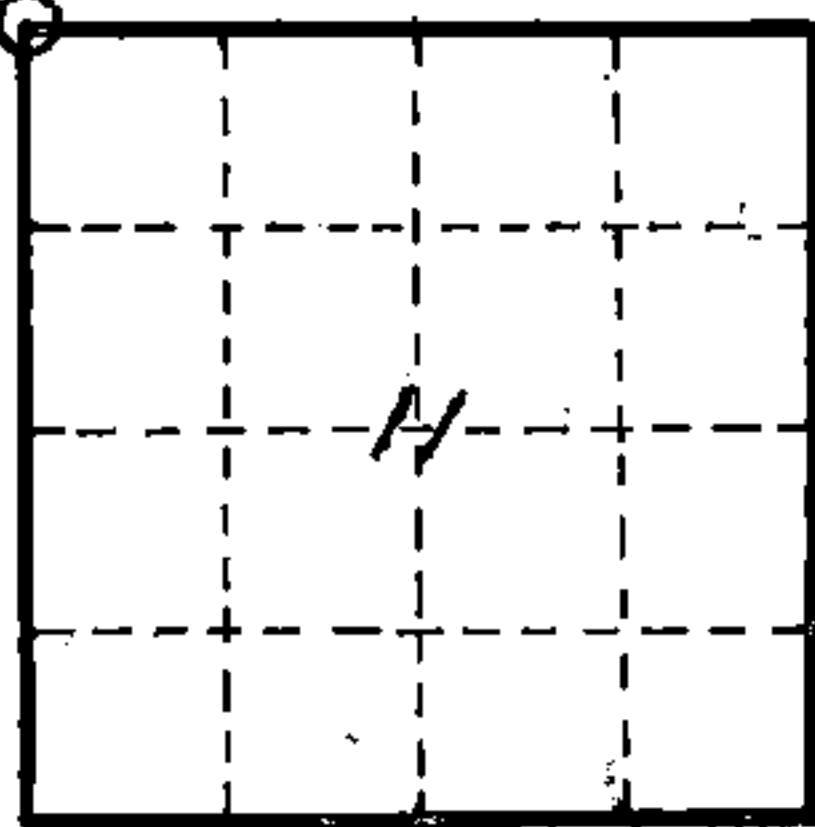
History: This corner was established during the original survey of this township, as noted in the original field notes for the original survey of T34N-R13E, 4th. p.m.

Description of monument and accessories I established to perpetuate the location of this corner:

At the point determined for the location of the corner I emplaced a:
GALVANIZED IRON PIPE, THREE FEET LONG, ONE INCH IN DIAMETER, WITH ALUMINUM CAP DENOTED AS, "KIMBERLY-CLARK CORP. T34N 2, 3, 10, 11 R13E SPERHAKE RLS 463 10/28/63."

The pipe is witnessed by:
Aspen 5 N 70°E 60½ links. (SCRIBED S 2 NBT).
Oak 6 N 12°W 73 links. (SCRIBED S 3 NBT).
Maple 28 S 38°E 320 links. (SCRIBED S11 NBT).

Description as to how corner was located: The section corner one mile east has been previously set. A post approximately 3 miles west has apparently been accepted by others as the section corner for 5, 6, 7, 8. The distance between these points is 318.26 chains. The record distance for this four miles was 320.70 chains. The record distance of the line between 2 and 11 was 80.10 chains. Proportionately, therefore, the corner of 2, 3, 10, 11, should be 79.49 chains west of the corner of 1, 2, 11, 12. Previous survey work in this town has convinced me that although the original survey was generally very erratic, the actual lengths of the top tier of sections is approximately that of the record distances. As an example, an original bearing tree was located at the corner of 1, 2, 11, 12. The town line corner of 1 and 2 was also irrefutably located. The record length of the line between 1 and 2 was 77.55 chains. The actual length is 77.50 chains. Therefore, I tentatively established the north-south position of 2, 3, 10 and 11, as being the record distance, or 77.40 chains south of the town line corner of 2 and 3.



O = Corner monument restored

The above reasoning thus placed the corner tentatively in an open bog. The original field notes state that the bearing trees were a W. Pine 15 N 4°W 60 links, and a W. Birch 12 N 20°E 53 links. It is quite apparent that no trees have ever grown in the swamp, and that the bearing trees at the very least would have to grow right on the edge, rather than farther up into the high ground. A pine stump that could be interpreted as the above noted pine bearing tree was located right on the edge of the swamp. Though badly burned, a scar at its base could be interpreted as once being the bearing face for the B. T. mark. Others have chopped into this face
(Continued on back)

Subscribed & sworn to before me
this 25 day of Aug. 1964
Notary Public, Forest Co., Wis.
Com. expires 10/31/65

Resident witnesses _____
Dated at Crandon, Wisconsin, this 25 day of Aug, 19 64.
Signature Neal Sperhake
Title Registered Land Surveyor Registration No. 463

Office of Register of Deeds County of Forest,
I hereby certify that the within instrument was filed in this office for record on the 25 day of Aug, 19 64, and was filed in Book No. _____ Page No. _____ of County Records.

Surveyor's Seal

Signature Anna Peterson Title Reg. of Deeds

43413030000

88914
Index No. E-17

many years ago, apparently feeling then too that this stump was the original bearing tree. Measuring south three degrees east for sixty links I arrived at a point only 12 links south and 17 links west of the point that had been tentatively determined by proration as being the site of the corner of 2, 3, 10, 11. I have, therefore, accepted the above noted pine stump as being the original bearing tree, and have so replaced the corner 77.52 chains south of the town line corner of 2 and 3, and 79.66 chains west of the corner of 1, 2, 11, 12.