

U.S. PUBLIC LAND SURVEY MONUMENT RECORD

This form is intended and designed to fulfill all requirements of Wisconsin Administrative Code, Chapter A-E 7.08 U.S. Public Land Survey Monument Record (3) (a)(b)(c)(d)(e)(f)(g)(h)(i).

The coordinate value shown has been verified by at least one of the following methods: 1) Comparison to a previously GNSS determined published value; 2) The value is the average of two or more GNSS observations at a markedly different time; 3) One or more distances were measured back to the GNSS observed corner from temporary GNSS observed offset locations.

A-E 7.08(3)(a) Identity of the corner:

WISCORS - Forest County

Corner ID: 43413030020

S 1/4 Corner Section 3	S 1/4 Corner - Computed	Witness Corner
Township 34 North	N: 526985.052 USFT	N: 526986.191 USFT
Range 13 East	E: 849130.271 USFT	E: 849075.283 USFT
Town of Nashville	Datum: NAD 83 (2011)	Datum: NAD 83 (2011)
County of Forest	GNSS Method: WISCORS	GNSS Method: WISCORS
	VRS Direct Observation	VRS Direct Observation

Original Corner Information:

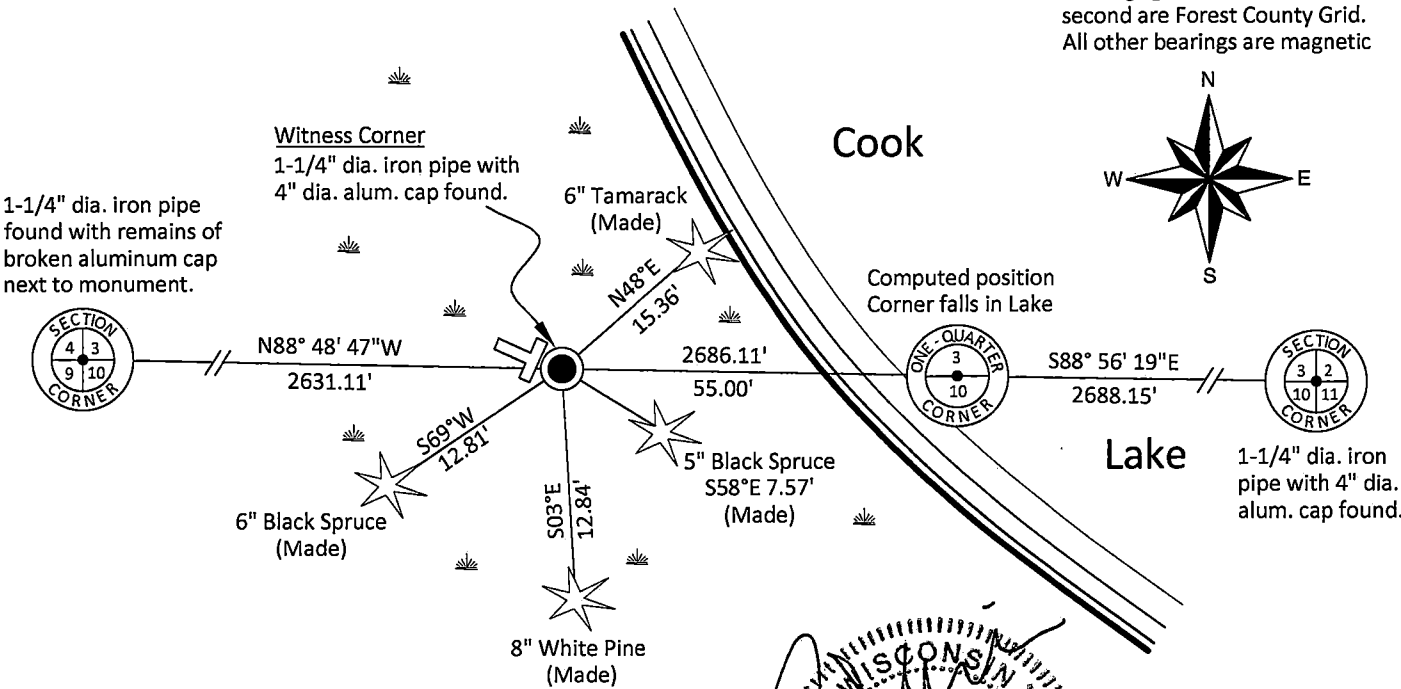
Original Surveyor: J.L. Nowlin
Date of Survey: October 1865
Original B.T.'s: Hemlock 12" - N26°W, 25 links
Birch 14" - S35°E no distance given

A-E 7.08(3)(b)(e)(f)(g) Describe any record evidence, monument evidence, occupational evidence, testimonial evidence or any other material evidence considered. Describe any discrepancy between the corner restored and any previously established location. State whether the corners was restored through acceptance of obliterated evidence, a found perpetuated location, or determined by proportionate methods.

- 08/25/1964 Restoration of Lost Original Government Survey Corner by Neal Sperhake indicates he found no evidence of the original corner and established the corner position by single proportion. He set a 1" dia. iron pipe with a Kimberly Clark Corp. aluminum cap as a witness corner and notes the south quarter corner is 55 feet to the east. He made two bearing trees to witness the witness corner. (See corner form for prior history and additional information).
- 08/14/2003 Robert O. Kamps, Forest Co Surveyor File # 341310-20030914 indicates a found 1" dia. iron pipe with a 4" cap for the witness corner and positions the south quarter corner 55.00 feet east into the Lake.
- 06/05/2005 Timothy J. Rusch, Forest Co Surveyor File # 341303-20150605 shows a found aluminum capped monument for the witness corner and positions the south quarter corner 55.00 feet to the east in the Lake.
- 08/22/2008 Michael A. Tremi, Forest Co Surveyor File # 341310-20080822 shows a 1" dia. iron pipe w/4" alloy cap found for the witness corner and positions the south quarter corner 55.00 feet east in the Lake.
- 03/27/2025 I found and accepted a 1-1/4" dia. iron pipe with a Kimberly Clark Corp 4" dia. aluminum cap stamped to identify the corner flush with the ground as the Witness Corner (W.C. Corner is East 55 feet). I could not find Sperhake's bearing trees. I computed the south quarter corner 55.00 feet to the east in the lake and made four new bearing trees to the witness corner as shown below.

A-E 7.08(3)(c)(d)(e)(h) Plan view of corner with ties to at least four witnesses. If in disagreement with previously established corner, show the distances between the two corners and also indicate the tie to the disputed corner. Distances and directions to other PLSS used as evidence or for proportioning.

Bearings given to the nearest second are Forest County Grid. All other bearings are magnetic



A-E 7.08(3)(i) - Certification

I, Gregory S. Maines, Professional Land Surveyor No. 2729, hereby certify that the corner location on this record was referenced by me or under my direction and control and that this U.S. Public Land Survey Monument Record is complete to the best of my knowledge and belief.



- * Vinyl "T" post 0.8' northwest of corner.
- * Distances to bearing trees are to nail in side with BT tag on tree.
- * Sketch is not to scale

State of Wisconsin

County of FOREST

ss. RESTORATION OF LOST ORIGINAL GOVERNMENT SURVEY CORNER.

I NEAL SPERHAKE, do hereby certify that on the FOURTEENTH day of NOVEMBER, 1963, I established the NORTH QUARTER SECTION CORNER OF SECTION 10, TOWNSHIP 34 NORTH, RANGE 13 EAST, Fourth Principal Meridian,
as described hereon.

History: This corner was established during the original survey of this township, as noted in the original field notes for the original survey of T34N-R13E, 4th. p.m.

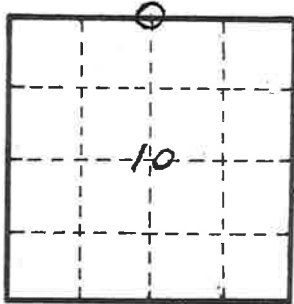
Description of monument and accessories I established to perpetuate the location of this corner:

At the point determined for the location of the corner I emplaced a:
GALVANIZED IRON PIPE, THREE FEET LONG, ONE INCH IN DIAMETER, WITH ALUMINUM CAP DENOTED AS, "KIMBERLY CLARK CORP. T34N 1/4 BTWN. 3 & 10 R13E WC - Corner is East 55 Feet - WC."

The pipe is witnessed by:

Elm 5 S 54°W 152 links. (SCRIBED S 1/4 10 WC BT).
Maple 4 N 88°W 202 links. (SCRIBED S 1/4 3 WC BT).

Description as to how corner was located: No evidence of original corner present. Thus, set by proportionate measurement. The section corners 1/2 mile east and west have been previously established with a distance of 81.56 chains between them. Thus, set the quarter corner 40.78 chains from either corner and on a straight line between them.



O = Corner monument restored

Subscribed & sworn to before me this 25 day of Aug 1964

Anna Peterson
NOTARY PUBLIC, FOREST CO., WIS
COM. EXPIRES 10/31/65

Resident witnesses _____

Dated at Crandon, Wisconsin, this 25 day of Aug, 19 64.

Signature Neal Sperhake

Title Registered Land Surveyor Registration No. 463

Office of Reg. of Deeds County of Forest
I hereby certify that the within instrument was filed in this office for record on the 25 day of Aug 19 64, and was filed in Book No. _____ Page No. _____ of County Records.

Surveyor's Seal

Signature Anna Peterson Title Reg. of Deeds

43413030624

88952

Index No.

E-15
E 15