

U.S. PUBLIC LAND SURVEY MONUMENT RECORD

This form is intended and designed to fulfill all requirements of Wisconsin Administrative Code, Chapter A-E 7.08 U.S. Public Land Survey Monument Record (3) (a)(b)(c)(d)(e)(f)(g)(h)(i).

The coordinate value shown has been verified by at least one of the following methods: 1) Comparison to a previously GNSS determined published value; 2) The value is the average of two or more GNSS observations at a markedly different time; 3) One or more distances were measured back to the GNSS observed corner from temporary GNSS observed offset locations.

247012

FILED ON:

10/21/2025 09:59 AM

CORTNEY BRITTEN CLEEREMAN
REGISTER OF DEEDS

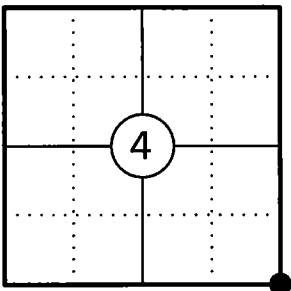
FOREST COUNTY WI

PAGES: 1

A-E 7.08(3)(a) Identity of the corner:

SE Corner Section 4	WISCORS - Forest County
Township 34 North	N: 527040.688 USFT
Range 13 East	E: 846444.737 USFT
Town of Nashville	Datum: NAD 83 (2011)
County of Forest	GNSS Method: WISCORS VRS Direct Observation

Corner ID: 43413040000



Original Corner Information:

Original Surveyor: J.L. Nowlin	Original B.T.'s: Sugar 12" - N50°E, 18 links
Date of Survey: October 1865	Hemlock 14" - S60°W, 10 links

A-E 7.08(3)(b)(e)(f)(g) Describe any record evidence, monument evidence, occupational evidence, testimonial evidence or any other material evidence considered. Describe any discrepancy between the corner restored and any previously established location. State whether the corners was restored through acceptance of obliterated evidence, a found perpetuated location, or determined by proportionate methods.

10/24/1963 Restoration of Lost Original Government Survey Corner by Neal Sperhake, indicates he set a 1" dia. iron pipe with a Kimberly Clark Corp aluminum cap and made four bearing trees. (See corner form for prior history and additional information).

1966 W.H.Stuth indicates corner by others.

11/17/1997 Michael E. Weber Forest County Survey File # 341309-19971117 shows a found aluminum capped monument in place.

12/03/2002 Michael A Trembl, Forest Co Surveyor File # 341310-20021203 shows a found 1" dia. iron pipe with 4" alloy cap.

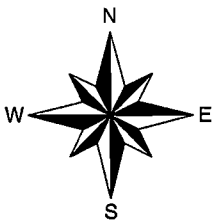
06/29/2004 Matthew E. Hougland Forest County Survey File # 341309-20040629 found 1" dia. iron pipe with 4" cap.

06/05/2015 Timothy J. Rusch Forest County Survey File # 341303-20150605 shows a found aluminum capped monument.

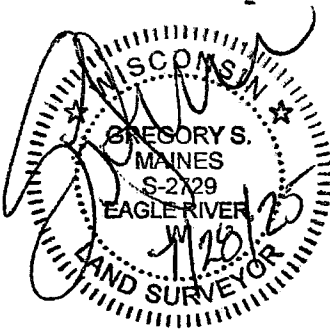
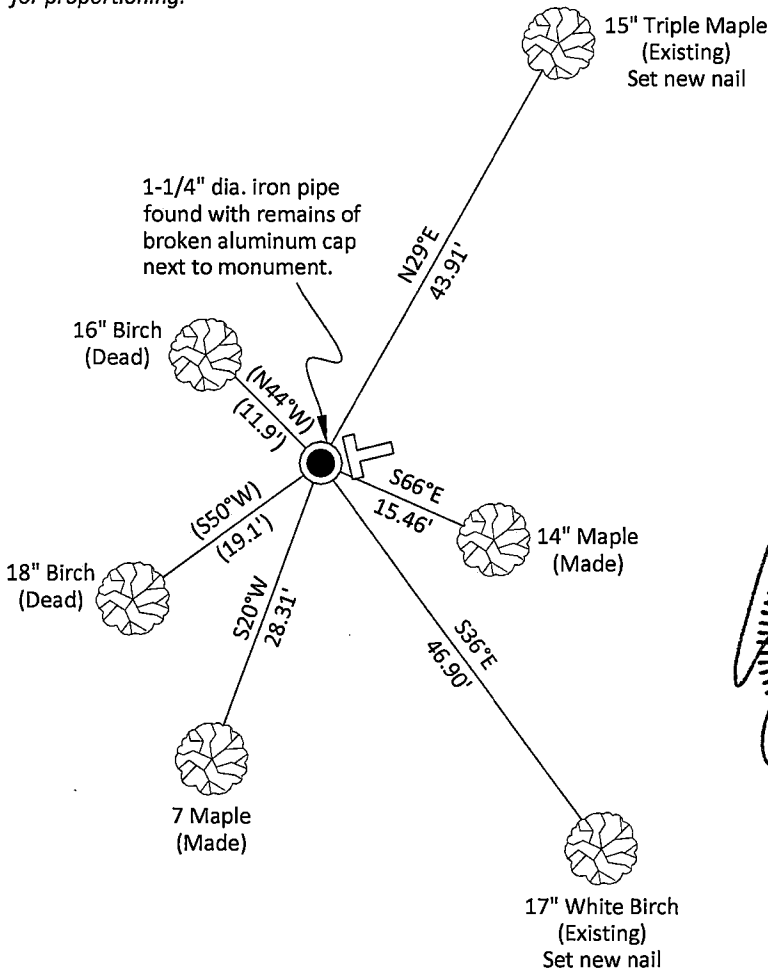
03/27/2025 I found and accepted a 1-1/4" dia. iron pipe with a broken off Kimberly Clark Corp 4" aluminum cap stamped to identify the corner 3" above grade and four bearing trees, two of which are dead. I made two new bearing trees to witness the corner as shown below.

A-E 7.08(3)(c)(d)(e)(h) Plan view of corner with ties to at least four witnesses. If in disagreement with previously established corner, show the distances between the two corners and also indicate the tie to the disputed corner. Distances and directions to other PLSS used as evidence or for proportioning.

Bearings given to the nearest second are Forest County Grid all other bearings are magnetic



- * Vinyl "T" post 1.0' northeast of corner.
- * Distances to bearing trees are to nail in side with BT tag on tree.
- * Sketch is not to scale



A-E 7.08(3)(i) - Certification

I, Gregory S. Maines, Professional Land Surveyor No. 2729, hereby certify that the corner location on this record was referenced by me or under my direction and control and that this U.S. Public Land Survey Monument Record is complete to the best of my knowledge and belief.

Index No.: E/3

43413040000

State of Wisconsin

County of FOREST

ss. RESTORATION OF LOST ORIGINAL GOVERNMENT SURVEY CORNER.

I NEAL SPERHAKE, do hereby certify that on the TWENTY-FOURTH day of OCTOBER, 19 63, I established the NORTHWEST SECTION CORNER OF SECTION 10, TOWNSHIP 34 NORTH, RANGE 13 EAST, Fourth Principal Meridian, as described hereon.

History: This corner was established during the original survey of this township, as noted in the original field notes for the original survey of T34N-R13E, 4th. p.m.

Description of monument and accessories I established to perpetuate the location of this corner:

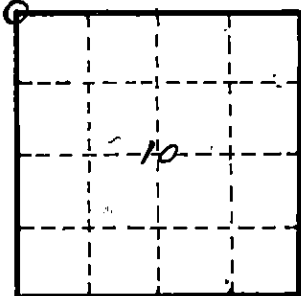
At the point determined for the location of the corner I emplaced a:

GALVANIZED IRON PIPE, THREE FEET LONG, ONE INCH IN DIAMETER, WITH ALUMINUM CAP DENOTED AS, "KIMBERLY CLARK CORP. T34N 3, 4, 9, 10 R13E SPERHAKE RLS 463 10/24/63."

The pipe is witnessed by:

Maple 6 N 36°E 66 links. (SCRIBED S 3 NBT).
W. Birch 14 N 44°W 18 links. (SCRIBED S 4 NBT).
W. Birch 12 S 50°W 29 links. (SCRIBED S 9 NBT).
W. Birch 8 S 30°E 72 links. (SCRIBED S10 NBT).

Description as to how corner was located: No evidence of the original corner is present. Previous work has indicated that though the general original survey of this town was erratic, the length of the top tier of sections is actually very close to the original noted distance. The length of the line between sections 1 and 2 is actually 5 links less than the recorded distance. Thus, I arbitrarily picked an actual length of the line between 3 and 4 as being 6 links less than the record distance. Thus, the north-south position of 3, 4, 9, 10, is 75.34 chains south of the town line corner of 3 and 4. For the east-west position: To the east the corner of 2, 3, 10, 11 had been previously determined. To the west, Ralph Cook, a resident of Arbutus Lake, and a logger in this general area, claimed the position of the corner of 4, 5, 8, 9, had been denoted by a post which was bulldozed out several years ago when a new woods road was built. Cook could only denote an approximate position for the post, but he could not remember exactly where it stood. In searching for any possible evidence of where this corner stood, a location poster denoting the section line between 4 and 5 was located about 2 or 3 chains north of where the corner should have been. Since this location poster, which was emplaced in 1940, must have been put up when the section corner was still present, I am confident that it denotes the east-west position of 4, 5, 8, 9, and although from this we do not know the exact position of the corner, we can use it for denoting the western limits of the line between 4 and 9. Thus, we were able to determine that the distance between 2, 3, 10, 11 and the east-west position of 4, 5, 8, 9, is 163.64 chains. The record distance of the line between (continued on back)



0 = Corner monument restored

Subscribed & sworn to before me
this 25 day of Aug. 1964
Anna Peterson
NOTARY PUBLIC, FOREST CO., WIS.
COM. EXPIRES 10/31/65.

Resident witnesses

Dated at Crandon, Wisconsin, this 25 day of Aug, 19 64.

Signature *Neal Sperhake*

Title Registered Land Surveyor Registration No. 463

Office of Reg. of Deeds County of Forest

I hereby certify that the within instrument was filed in this office for record on the 25 day of Aug, 19 64, and was filed in Book No. 43413040000 Page No. 13 of County Records.

Signature *Anna Peterson* Title Reg. of Deeds

Surveyor's Seal

88918

Index No.

E-13

3 and 10 was 80.10 chains. Applying proportionate measurement, the actual length of the line from 2, 3, 10, 11, to 3, 4, 9, 10, should be 81.56 chains. Lacking any other evidence, I have accepted this for denoting the east-west position of 3, 4, 9, 10.

100-6011
hll