

U.S. PUBLIC LAND SURVEY MONUMENT RECORD

This form is intended and designed to fulfill all requirements of Wisconsin Administrative Code, Chapter A-E 7.08 U.S. Public Land Survey Monument Record (3) (a)(b)(c)(d)(e)(f)(g)(h)(i).

The coordinate value shown has been verified by at least one of the following methods: 1) Comparison to a previously GNSS determined published value; 2) The value is the average of two or more GNSS observations at a markedly different time; 3) One or more distances were measured back to the GNSS observed corner from temporary GNSS observed offset locations.

247014

FILED ON:

10/21/2025 09:59 AM

CORTNEY BRITTEN CLEEREMAN
REGISTER OF DEEDS

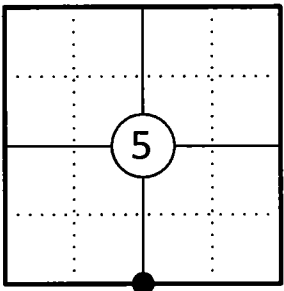
FOREST COUNTY WI

PAGES: 1

A-E 7.08(3)(a) Identity of the corner:

S 1/4 Corner Section 5	WISCRS - Forest County
Township 34 North	N: 527235.657 USFT
Range 13 East	E: 838680.610 USFT
Town of Nashville	Datum: NAD 83 (2011)
County of Forest	GNSS Method: WISCORS VRS Direct Observation

Corner ID: 43413050020



Original Corner Information:

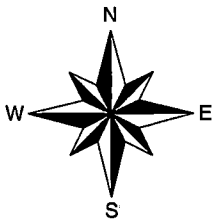
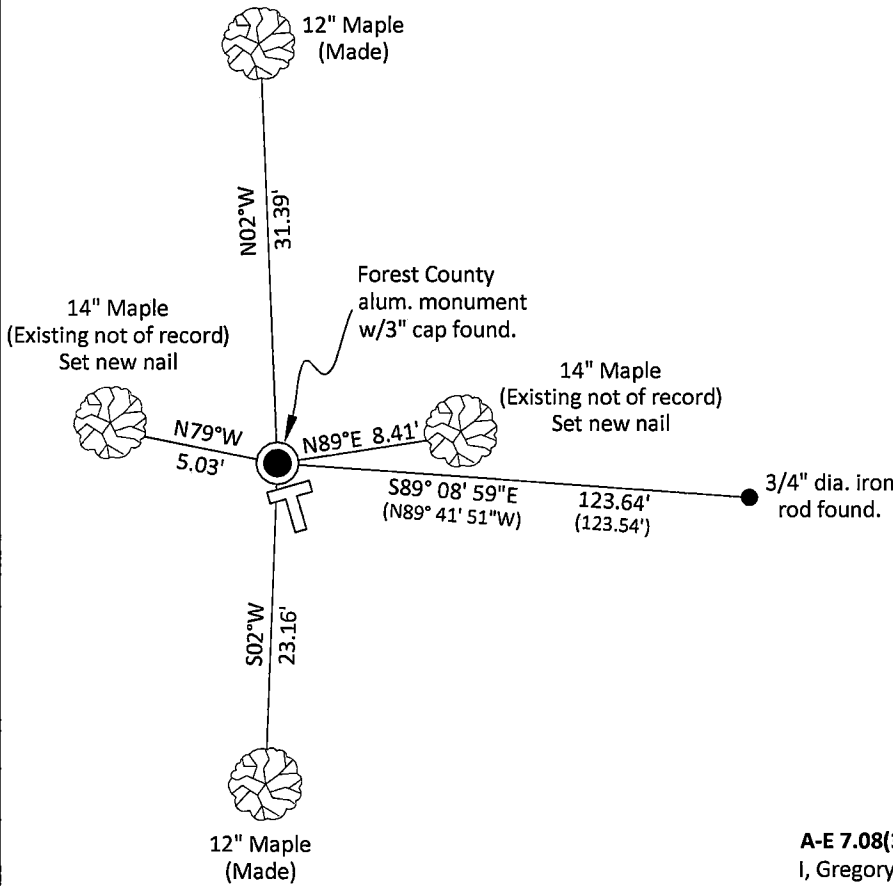
Original Surveyor: J.L. Nowlin	Original B.T.'s: Sugar 8" - N54°W, 6 links
Date of Survey: October 1865	Hemlock 7" - S62°E, 25 links

A-E 7.08(3)(b)(e)(f)(g) Describe any record evidence, monument evidence, occupational evidence, testimonial evidence or any other material evidence considered. Describe any discrepancy between the corner restored and any previously established location. State whether the corners was restored through acceptance of obliterated evidence, a found perpetuated location, or determined by proportionate methods.

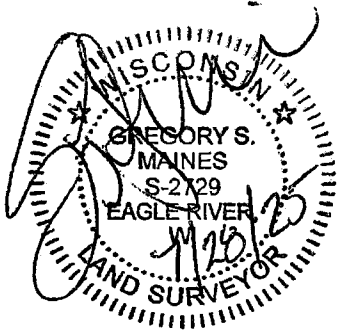
- 09/17/1981 Certified Land Corner Restoration by Daniel K. Pleoger indicates he set a 2-1/2" dia. capped aluminum monument by proportionate measurement (2613.032 feet). (See corner form for prior history and additional information).
- 12/20/2002 Eugene C. Uttech, Forest Co Surveyor File # 341305-20021220 indicates aluminum mon. found on line and midway between southeast and southwest sections corners (2587.72 feet). The distance on the south line differs from Pleoger's measurements. Uttech set a 3/4" dia. iron rod between Lots 13 & 14 of his survey, 123.54 feet east of the 1/4 corner.
- 08/18/2023 Michael J. Hoffman, Forest Co Surveyor File #341305-20230818 found aluminum capped monument 2587.72 feet east of southwest corner of Section 5.
- 03/10/2025 I found and accepted a Forest County aluminum monument with a 3" dia. cap stamped to identify the corner 12" above grade All of Pleoger's bearing trees were gone. I did find two existing bearing trees not of record. I made two additional bearing trees and used Uttech's iron rod to the east to witness the corner as shown below.

A-E 7.08(3)(c)(d)(e)(h) Plan view of corner with ties to at least four witnesses. If in disagreement with previously established corner, show the distances between the two corners and also indicate the tie to the disputed corner. Distances and directions to other PLSS used as evidence or for proportioning.

Bearings given to the nearest second are Forest County Grid all other bearings are magnetic



- * Vinyl "T" post 1.4' southeast of corner.
- * Distances to bearing trees are to nail in side with BT tag on tree.
- * Sketch is not to scale



A-E 7.08(3)(i) - Certification

I, Gregory S. Maines, Professional Land Surveyor No. 2729, hereby certify that the corner location on this record was referenced by me or under my direction and control and that this U.S. Public Land Survey Monument Record is complete to the best of my knowledge and belief.

Index No.:

47

43413050020

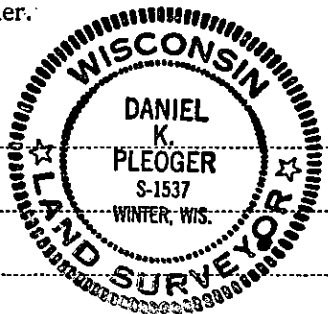
CERTIFIED LAND CORNER RESTORATION

Index No. **E-77**

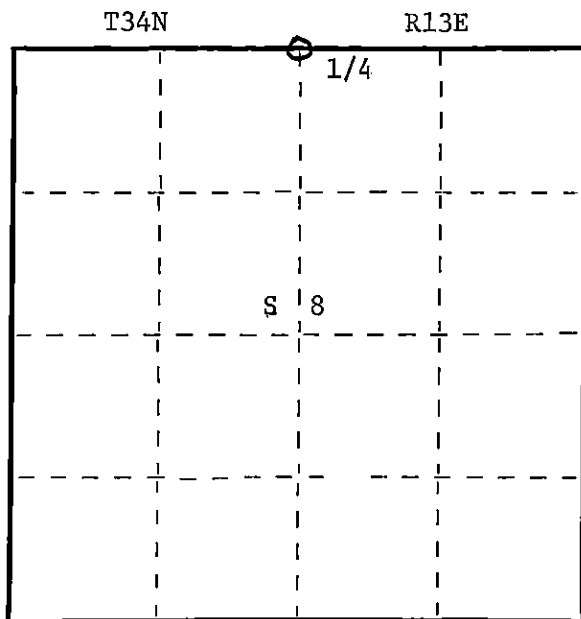
State of Wisconsin }
County of Forest } ss.

I, Daniel K. Pleoger, do hereby
certify that on the 23 day
of July, 1981, I ~~found~~
Est. evidence of the Quarter
corner of Sections 5 & 8
Township 34, North, Range
13 East, Fourth Principal Meridian,
as described hereon; and that from this evidence
I established a new monument and accessories
as described hereon to perpetuate the original
location of this corner.

Resident witnesses:



FORM 985 R. C. MILLER CO., MILWAUKEE



○ = Corner monument restored.

History of original corner establishment:

Original corner established by James L. Nowlin Gov. deputy surveyor in 1865 from which
sugar 8" bears N54W 6 lks and hemlock 7" bears S62E 25 lks.

Description of corner evidence found:

Total distance from section corner 5-6-7-8 to section corner 4-5-8-9 is 5226.064 ft.
at bearing N89-25-27-E.

Set 1/4 corner 2613.032 ft. intermediate

Description of monument and accessories I established to perpetuate the original location of this corner.

Set a 2 1/2' aluminum A-1 federal monument with alloy cap stamped:

Monument projects 12" above ground.
Marked N.B.T.s.

Maple 5" N54E 9.96 ft.
Black ash 5" S26E 8.93 ft.
Black ash 4" N58W 15.58 ft.
Scribed 1/4 - B.T.

T34N R13E

1/4 $\frac{S}{8}$

S1537 -1981

Dated at Rhineland, Wis., this 17 day of September, 1981

Signature Daniel K. Pleoger Title Registered Land Surveyor Registration No. 1537
(County Surveyor, Registered Land Surveyor, or other duly authorized official)

Office of Register of Deeds, County of Forest, I hereby certify that the within
instrument was filed in this office for record on the 25th day of September, 1981
at 2:00 o'clock P. M.

Eugene J. Stutzman
(Register of Deeds)

By _____ Deputy

DOCUMENT NO.
120517

4341305020