

U.S. PUBLIC LAND SURVEY MONUMENT RECORD

This form is intended and designed to fulfill all requirements of Wisconsin Administrative Code, Chapter A-E 7.08 U.S. Public Land Survey Monument Record (3) (a)(b)(c)(d)(e)(f)(g)(h)(i).

The coordinate value shown has been verified by at least one of the following methods: 1) Comparison to a previously GNSS determined published value; 2) The value is the average of two or more GNSS observations at a markedly different time; 3) One or more distances were measured back to the GNSS observed corner from temporary GNSS observed offset locations.

247015

FILED ON:

10/21/2025 09:59 AM

CORTNEY BRITTEN CLEEREMAN
REGISTER OF DEEDS

FOREST COUNTY WI

PAGES: 1

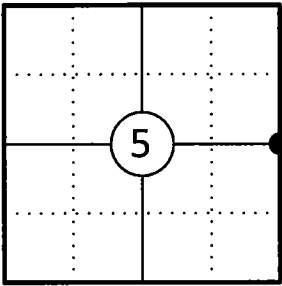
A-E 7.08(3)(a) Identity of the corner:

E 1/4 Corner Section 5	WISCRS - Forest County
Township 34 North	N: 529730.575 USFT
Range 13 East	E: 841327.581 USFT
Town of Nashville	Datum: NAD 83 (2011)
County of Forest	GNSS Method: WISCRS VRS Direct Observation

Original Corner Information:

Original Surveyor: J.L. Nowlin	Original B.T.'s: Sugar 12" - N49°E, 5 links
Date of Survey: October 1865	Birch 10" - S25°W, 30 links

Corner ID: 43413052000



A-E 7.08(3)(b)(e)(f)(g) Describe any record evidence, monument evidence, occupational evidence, testimonial evidence or any other material evidence considered. Describe any discrepancy between the corner restored and any previously established location. State whether the corners was restored through acceptance of obliterated evidence, a found perpetuated location, or determined by proportionate methods.

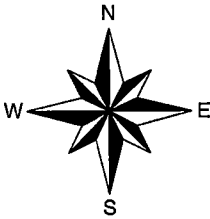
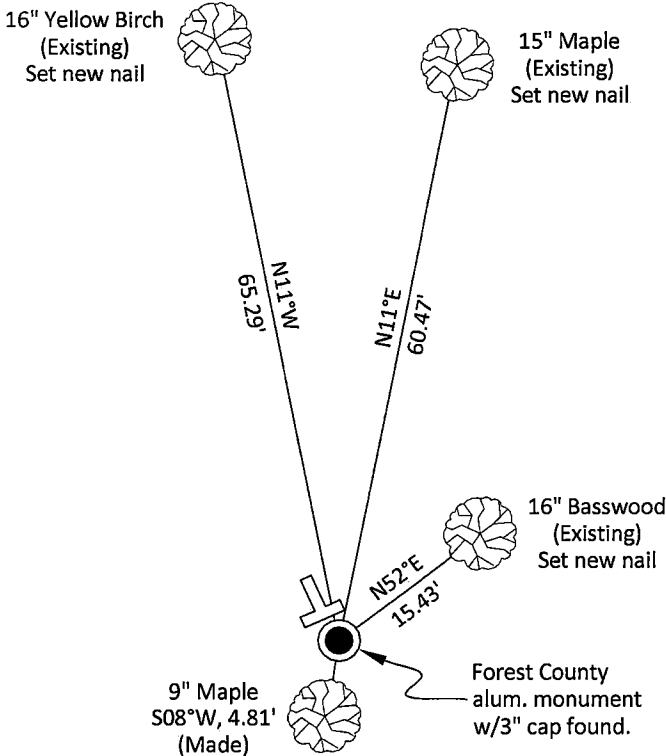
09/26/2002 U.S. Public Land Survey Monument Record Eugene C. Uttech, indicates he set a 30" cast aluminum monument by proportionate measurement and made four new bearing trees. (See corner form for prior history and additional information).

06/05/2015 Timothy J. Rusch Forest County Survey File # 341303-20150605 indicates a found aluminum capped monument.

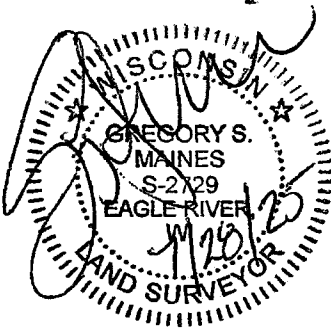
03/27/2025 I found and accepted a Forest County aluminum monument with a 3" dia. cap stamped to identify the corner 4" above grade and three bearing trees. I made one additional bearing tree to witness the corner as shown below.

A-E 7.08(3)(c)(d)(e)(h) Plan view of corner with ties to at least four witnesses. If in disagreement with previously established corner, show the distances between the two corners and also indicate the tie to the disputed corner. Distances and directions to other PLSS used as evidence or for proportioning.

Bearings given to the nearest second are Forest County Grid
all other bearings are magnetic



- * Vinyl "T" post 1.4' northwest of corner.
- * Distances to bearing trees are to nail in side with BT tag on tree.
- * Sketch is not to scale



A-E 7.08(3)(i) - Certification
I, Gregory S. Maines, Professional Land Surveyor No. 2729, hereby certify that the corner location on this record was referenced by me or under my direction and control and that this U.S. Public Land Survey Monument Record is complete to the best of my knowledge and belief.

Index No.:

19

43413052000

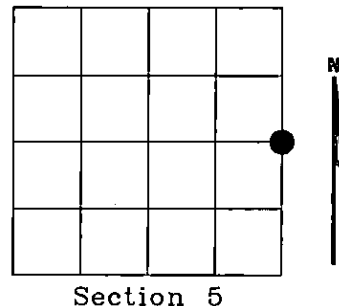
Document Number
177115

REGISTER'S OFFICE
Forest County, Wis.
Received for record this 23rd day
of October A.D., 2002 at
9:00 o'clock A.M. and recorded
in Vol. Corner Restoration
page C-9
Kay Swanson, Deputy
Register of Deeds

U.S. PUBLIC LAND SURVEY MONUMENT RECORD

NOTE: This form is intended and designed to fulfill all requirements of Wisconsin Administrative Code, Chapter A-E 7.08 U.S. Public Land Survey Monument Record (3)(a)(b)(c)(d)(e)(f)(g)(h)(i). An additional sheet may be added if necessary to conform with said requirements.

(a) Corner location: Township 34 North
Range 13 West
Town of NASHVILLE
FOREST County, Wisconsin

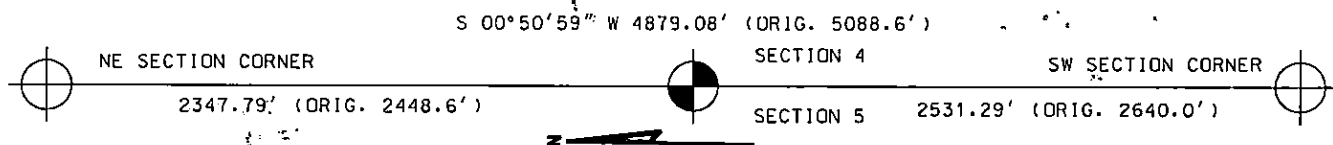


Section 5

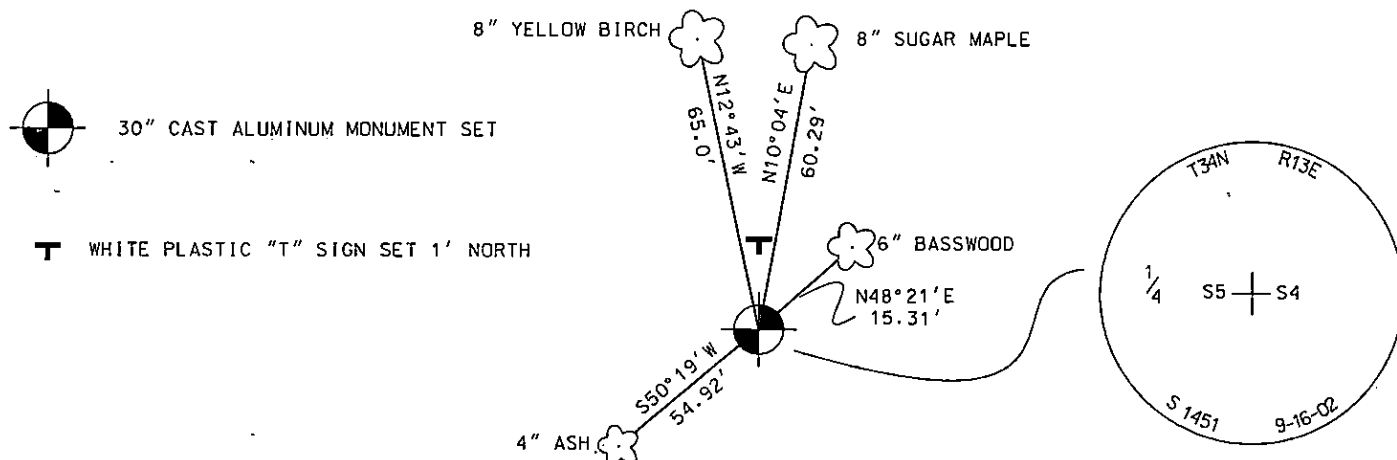
(b)(f)(g)(h) Description of monument found at this corner and if it was accepted, state all evidence (material, testimonial, occupational, plats, records, other monuments) used as a basis for accepting. If not accepted or if nothing was found, state evidence used as basis for establishing location. If reestablished through lost corner proportionate methods, indicate all monuments, distances and directions used to establish. Indicate type of monument found or set and sign post.

1865 - James L. Nowlin, set on quarter section post.
BTs Sugar 12" N49E 5 links.
Birch 10" S25W 30 links

2002 - I found no evidence of corner. Established one quarter corner by proportional measurement.



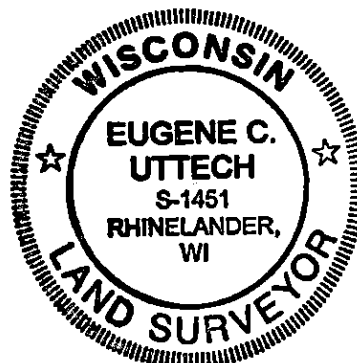
(c)(d)(e) Plan view of corner with ties to at least 4 witness monuments. If in disagreement with previously established corner, show the distances between the two corners and also indicate the ties to the



(i) I, EUGENE C. UTTECH, Registered Land Surveyor *S-1451, hereby certify that the corner location on this record was determined by me or under my direction and control and that this U.S. Public Land Survey Monument Record is correct and complete to the best of my knowledge and belief.

Eugene C. Uttech
Signature

9.26.02
Date



Index No. C-9

43413052000