

U.S. PUBLIC LAND SURVEY MONUMENT RECORD

This form is intended and designed to fulfill all requirements of Wisconsin Administrative Code, Chapter A-E 7.08 U.S. Public Land Survey Monument Record (3) (a)(b)(c)(d)(e)(f)(g)(h)(i).

The coordinate value shown has been verified by at least one of the following methods: 1) Comparison to a previously GNSS determined published value; 2) The value is the average of two or more GNSS observations at a markedly different time; 3) One or more distances were measured back to the GNSS observed corner from temporary GNSS observed offset locations.

A-E 7.08(3)(a) Identity of the corner:

SE Corner Section 6  
Township 34 North  
Range 13 East  
Town of Nashville  
County of Forest

WISCRS - Forest County  
N: 527270.853 USFT  
E: 836093.428 USFT  
Datum: NAD 83 (2011)  
GNSS Method: WISCRS VRS Direct Observation

Original Corner Information:

Original Surveyor: J.L. Nowlin  
Date of Survey: October 1865

Original B.T.'s: Sugar 10" - N58°E, 25 links  
Sugar 12" - N32°W, 80 links

A-E 7.08(3)(b)(e)(f)(g) Describe any record evidence, monument evidence, occupational evidence, testimonial evidence or any other material evidence considered. Describe any discrepancy between the corner restored and any previously established location. State whether the corners was restored through acceptance of obliterated evidence, a found perpetuated location, or determined by proportionate methods.

09/17/1981 Certified Land Corner Restoration by Daniel K. Pleoger indicates he found a 1-1/2" dia. iron pipe and replaced the pipe with a 2-1/2" dia. aluminum capped monument and made one new bearing tree. (See corner form for prior history and additional information).

1966 W.H. Stuth indicates corner by others.

12/20/2002 Eugene C. Uttech, Forest Co Surveyor File # 341305-20021220 indicates a found aluminum monument.

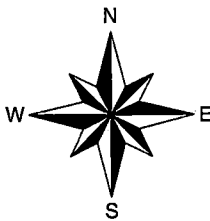
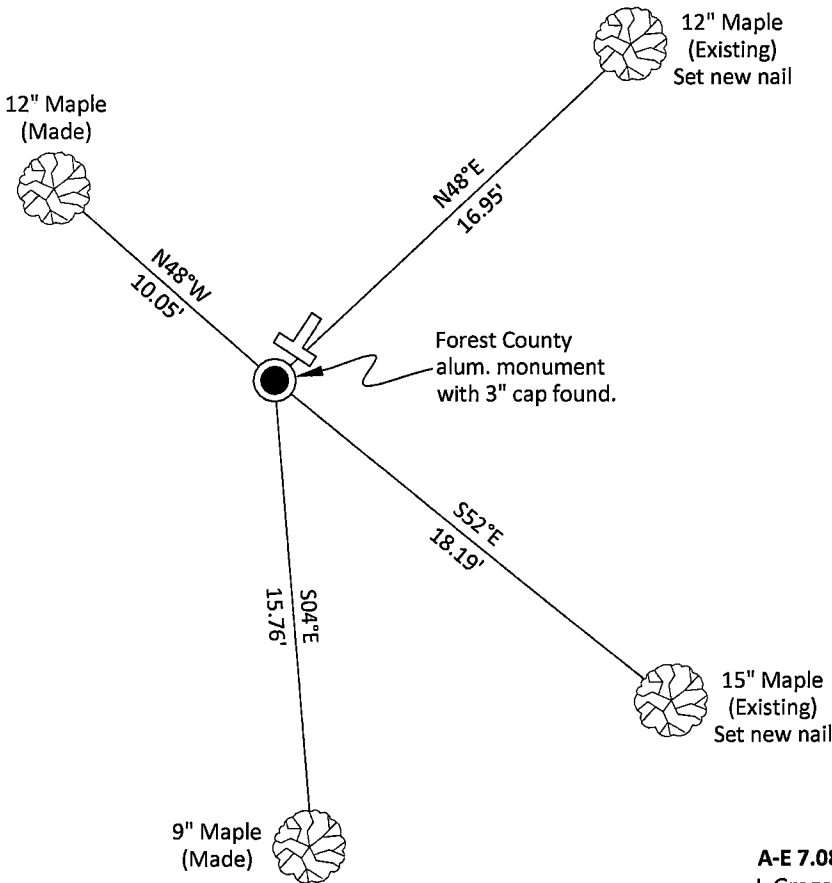
03/08/2010 Michael A. Trembl, Forest Co Surveyor File # 341307-20100308 indicates existing 2-1/4" dia. aluminum pipe monument.

08/18/2023 Michael J. Hoffman, Forest Co Surveyor File # 341305-20230818 indicates a found aluminum capped monument.

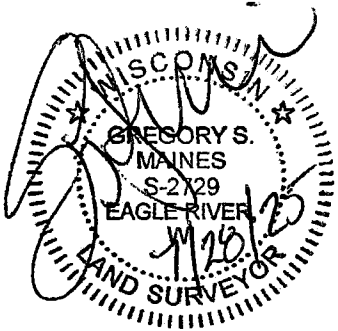
03/10/2025 I found and accepted a Forest County aluminum monument with a 3" dia. cap stamped to identify the corner 6" above grade and two existing bearing trees. I made two additional bearing trees to witness the corner as shown below.

A-E 7.08(3)(c)(d)(e)(h) Plan view of corner with ties to at least four witnesses. If in disagreement with previously established corner, show the distances between the two corners and also indicate the tie to the disputed corner. Distances and directions to other PLSS used as evidence or for proportioning.

Bearings given to the nearest second are Forest County Grid all other bearings are magnetic



- \* Vinyl "T" post 0.7' southwest of corner.
- \* Distances to bearing trees are to nail in side with BT tag on tree.
- \* Sketch is not to scale



A-E 7.08(3)(i) - Certification  
I, Gregory S. Maines, Professional Land Surveyor No. 2729, hereby certify that the corner location on this record was referenced by me or under my direction and control and that this U.S. Public Land Survey Monument Record is complete to the best of my knowledge and belief.

Index No.: 25

43413060000

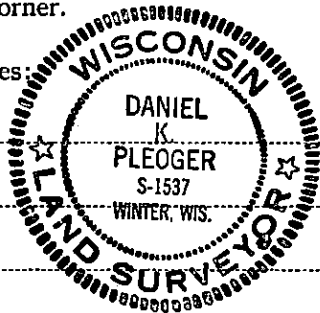
# CERTIFIED LAND CORNER RESTORATION

Index No. **E-5**

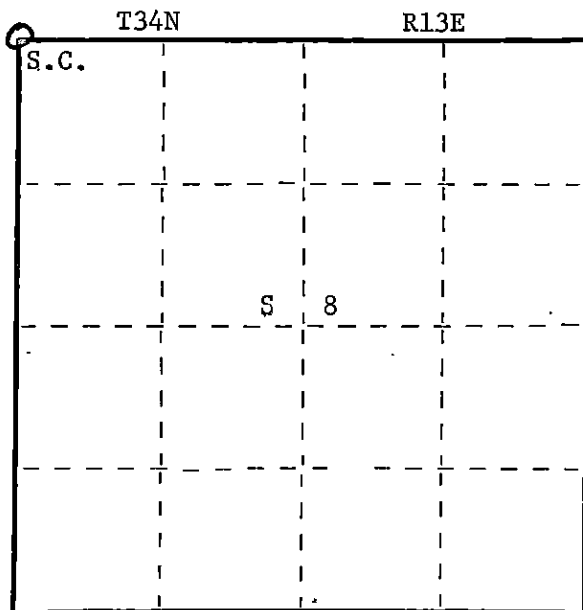
State of Wisconsin }  
County of Forest } ss.

I Daniel K. Pleoger, do hereby  
certify that on the 24 day  
of July, 19 81, I found  
evidence of the Section  
corner of Sections 5-6-7-8  
Township 34, North, Range  
13 East, Fourth Principal Meridian,  
as described hereon; and that from this evidence  
I established a new monument and accessories  
as described hereon to perpetuate the original  
location of this corner.

Resident witnesses:



FORM 985 H. C. MILLER CO., MILWAUKEE



○ = Corner monument restored.

History of original corner establishment:

Original corner established by James L. Nowlin Gov. deputy surveyor in 1865 from which  
sugar 10" bears N58E 25 lks and sugar 12" bears N32W 80 lks.

Description of corner evidence found:

Recovered a 1½" iron pipe - also a 5" squared cedar post alongside iron pipe.  
Recovered O.B.T.s

Sugar 6" N75W 3.72 ft.  
Scribed B.T.

Sugar 7" N48E 17.31 ft.  
Scribed B.T.

Description of monument and accessories I established to perpetuate the original location of this corner.

Replaced iron pipe with a 2½" aluminum A-1 Federal monument with alloy cap stamped:

Monument projects 8" above ground

Marked N.B.T.  
Maple 16" S52E 18.50 ft.  
Scribed S.C.-B.T.

T34N R13E  
S.C.  $\frac{6}{7} \frac{5}{8}$   
S1537-1981

Dated at Rhineland, Wis., this 17 day of September, 19 81.

Signature Daniel K. Pleoger Title Registered Land Surveyor Registration No. 1537  
(County Surveyor, Registered Land Surveyor, or other duly authorized official)

Office of Register of Deeds, County of Forest, I hereby certify that the within  
instrument was filed in this office for record on the 25th day of September, 19 81  
at 2:00 o'clock P. M.

Eugene Stetson  
(Register of Deeds)  
By \_\_\_\_\_ Deputy

DOCUMENT NO.  
**120516**

43413060000