

U.S. PUBLIC LAND SURVEY MONUMENT RECORD

This form is intended and designed to fulfill all requirements of Wisconsin Administrative Code, Chapter A-E 7.08 U.S. Public Land Survey Monument Record (3) (a)(b)(c)(d)(e)(f)(g)(h)(i).

The coordinate value shown has been verified by at least one of the following methods: 1) Comparison to a previously GNSS determined published value; 2) The value is the average of two or more GNSS observations at a markedly different time; 3) One or more distances were measured back to the GNSS observed corner from temporary GNSS observed offset locations.

247017

FILED ON:

10/21/2025 09:59 AM

CORTNEY BRITTEN CLEEREMAN
REGISTER OF DEEDS

FOREST COUNTY WI

PAGES: 1

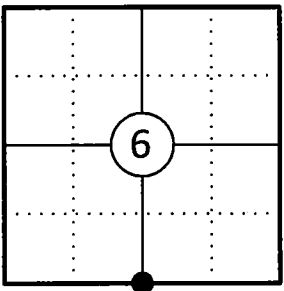
A-E 7.08(3)(a) Identity of the corner:

S 1/4 Corner Section 6	WISCRS - Forest County
Township 34 North	N: 527225.774 USFT
Range 13 East	E: 833426.208 USFT
Town of Nashville	Datum: NAD 83 (2011)
County of Forest	GNSS Method: WISCORS VRS Direct Observation

Original Corner Information:

Original Surveyor: J.L. Nowlin	Original B.T.'s: Sugar 8" - N15°W, 10 links
Date of Survey: October 1865	Fir 7" - S34°E, 6 links

Corner ID: 43413060020

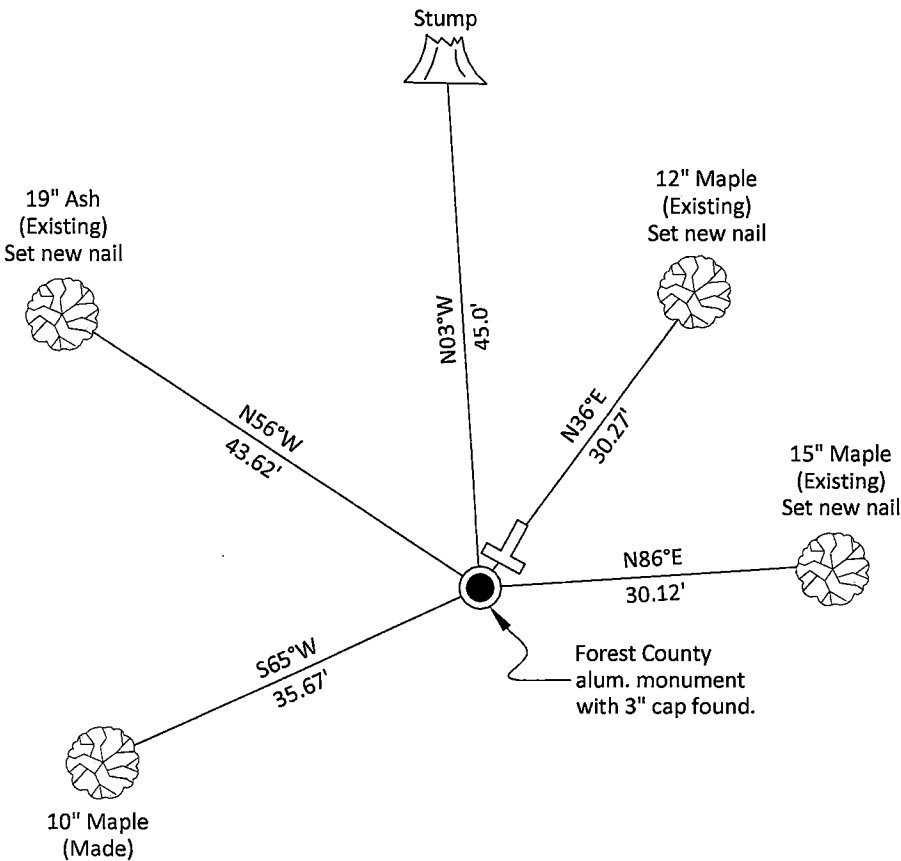


A-E 7.08(3)(b)(e)(f)(g) Describe any record evidence, monument evidence, occupational evidence, testimonial evidence or any other material evidence considered. Describe any discrepancy between the corner restored and any previously established location. State whether the corners was restored through acceptance of obliterated evidence, a found perpetuated location, or determined by proportionate methods.

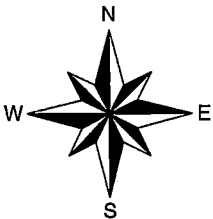
07/24/1992 Certified Land Corner Restoration by Glen Barker indicates he set a 2-1/4" Forest County aluminum capped monument by proportional measurement and made four new bearing trees. (See corner form for prior history and additional information).

03/10/2025 I found and accepted a Forest County aluminum monument with a 3" dia. cap stamped to identify the corner 7" above grade along with three existing bearing trees and the stump of the fourth one. I made one new bearing tree to witness the corner as shown below.

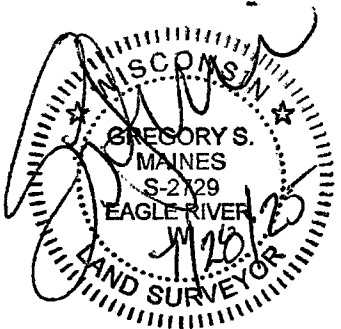
A-E 7.08(3)(c)(d)(e)(h) Plan view of corner with ties to at least four witnesses. If in disagreement with previously established corner, show the distances between the two corners and also indicate the tie to the disputed corner. Distances and directions to other PLSS used as evidence or for proportioning.



Bearings given to the nearest second are Forest County Grid all other bearings are magnetic



- * Vinyl "T" post 0.7' northeast of corner.
- * Distances to bearing trees are to nail in side with BT tag on tree.
- * Sketch is not to scale



A-E 7.08(3)(i) - Certification

I, Gregory S. Maines, Professional Land Surveyor No. 2729, hereby certify that the corner location on this record was referenced by me or under my direction and control and that this U.S. Public Land Survey Monument Record is complete to the best of my knowledge and belief.

Index No.:

43

43413060020

DOCUMENT NUMBER
145207

FORM 985 H. C. MILLER CO., MILWAUKEE

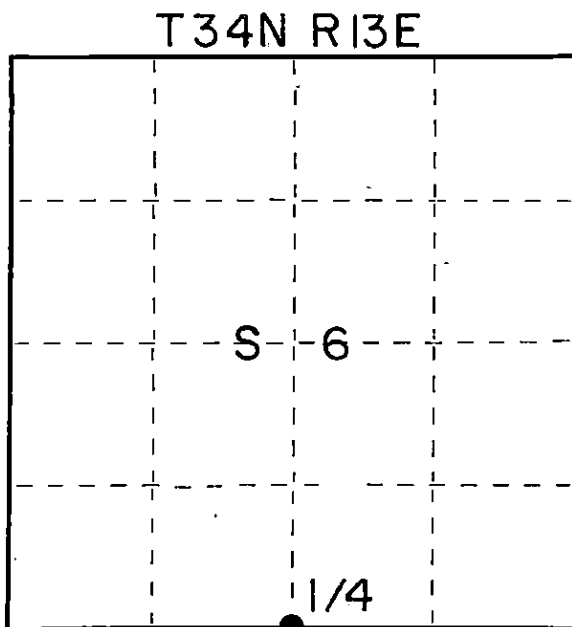
State of Wisconsin }
County of FOREST } ss.

I, Glen Barker, do hereby
certify that on the 7th day
of November, 19 91, I found
evidence of the Quarter Section
corner of Section 6 & 7
Township 34, North, Range
13 East, Fourth Principal Meridian,
as described hereon; and that from this evidence
I established a new monument and accessories
as described hereon to perpetuate the original
location of this corner.

Resident witnesses:

N. Spiess

J. Spiess



CERTIFIED LAND CORNER RESTORATION
U.S. PUBLIC LAND SURVEY

Index No. E-3

History of original corner establishment:

Original corner established in 1865 by James L. Nowlin, Government Deputy Surveyor, from
which Sugar 8" N15W 10 lks and Fir 7" S34E 6 lks.

Description of corner evidence found:

Re-established quarter Section corner on a proportional measurement to the original G.L.O.
survey.

Total distance from southeast Section corner to southwest Section corner Section 6 is 5507.97'.

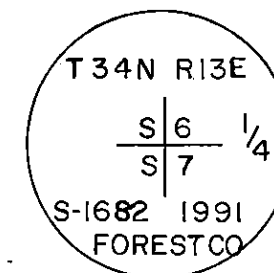
Set Quarter Section corner 2667.30' of southeast Section corner and 2840.67' of southwest
Section corner on a straight line between the two. No evidence of original or other corner.

Description of monument and accessories I established to perpetuate the original location of this corner.

Set a 2-1/4" Forest County Aluminum Monument with 3-1/4" alloy cap stamped.
Monument projects 6" above ground.

MARKED N.B.T.'s:

Twin White Ash	14"	N57W	44.46'
Sugar	8"	N4W	45.59'
Sugar	6"	N35E	30.64'
Sugar	9"	N85E	30.44'



Dated at Rhineland, Wis., this 24th day of July, 19 92.

Signature Glen Barker Title Registered Land Surveyor Registration No. S-1682
(County Surveyor, Registered Land Surveyor, or other duly authorized official)

Office of Register of Deeds, County of Forest, I hereby certify that the within
instrument was filed in this office for record on the 13th day of August, 19 92
at 9:30 o'clock A. M.

Paul Ascherbrenner
(Register of Deeds)

By _____ Deputy

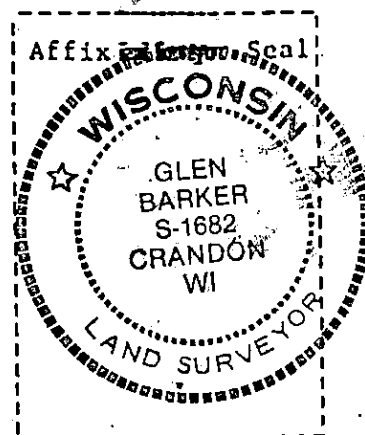
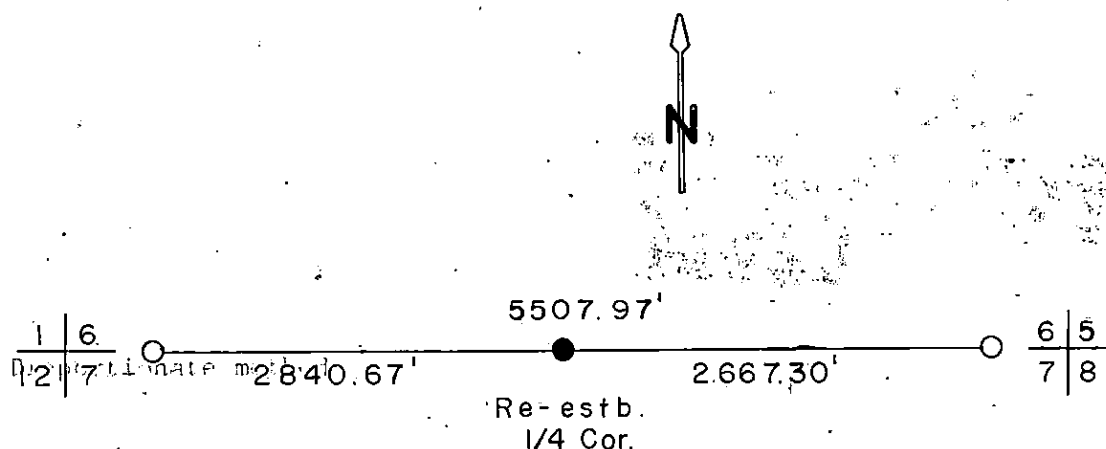
43413060020

Describe any material discrepancy between the location of the corner as restored or reestablished and the location of that corner as previously restored or reestablished by distance and direction. Show the discrepancy on the plan view drawing under (d), above. Show the distances between the corner as previously restored or reestablished and (1) the corner as restored or reestablished, and (2) to at least 2 of the monuments shown on the drawing in (d), above.

(f) Was the corner restored through acceptance of (1) an obliterated evidence location found perpetuated location?

(g&h) Was the corner reestablished through lost corner proportionate methods? If so, state method, including the directions and distances to other public land survey corner evidence or used for proportioning in determining the corner location?

Proportionate method



(i) I, Glen Barker
(type or print name) certify that the corner location shown on this record was determined by me or under my direction and control and that this U.S. Public Land Survey Monument Record is correct and complete to the best of my knowledge and belief.

Signature

Date

Glen Barker