

FILED ON:

10/21/2025 09:59 AM

CORTNEY BRITTEN CLEEREMAN
REGISTER OF DEEDS

FOREST COUNTY WI

PAGES: 1

U.S. PUBLIC LAND SURVEY MONUMENT RECORD

This form is intended and designed to fulfill all requirements of Wisconsin Administrative Code, Chapter A-E 7.08 U.S. Public Land Survey Monument Record (3) (a)(b)(c)(d)(e)(f)(g)(h)(i).

The coordinate value shown has been verified by at least one of the following methods: 1) Comparison to a previously GNSS determined published value; 2) The value is the average of two or more GNSS observations at a markedly different time; 3) One or more distances were measured back to the GNSS observed corner from temporary GNSS observed offset locations.

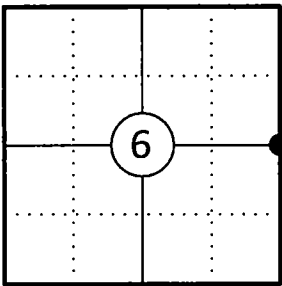
A-E 7.08(3)(a) Identity of the corner:

E 1/4 Corner Section 6	WISCRS - Forest County
Township 34 North	N: 529805.468 USFT
Range 13 East	E: 836113.552 USFT
Town of Nashville	Datum: NAD 83 (2011)
County of Forest	GNSS Method: WISCORS VRS Direct Observation

Original Corner Information:

Original Surveyor: N.A.	Original B.T.'s: Corner not originally set
Date of Survey: N.A.	

Corner ID: 43413062000

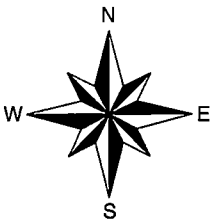
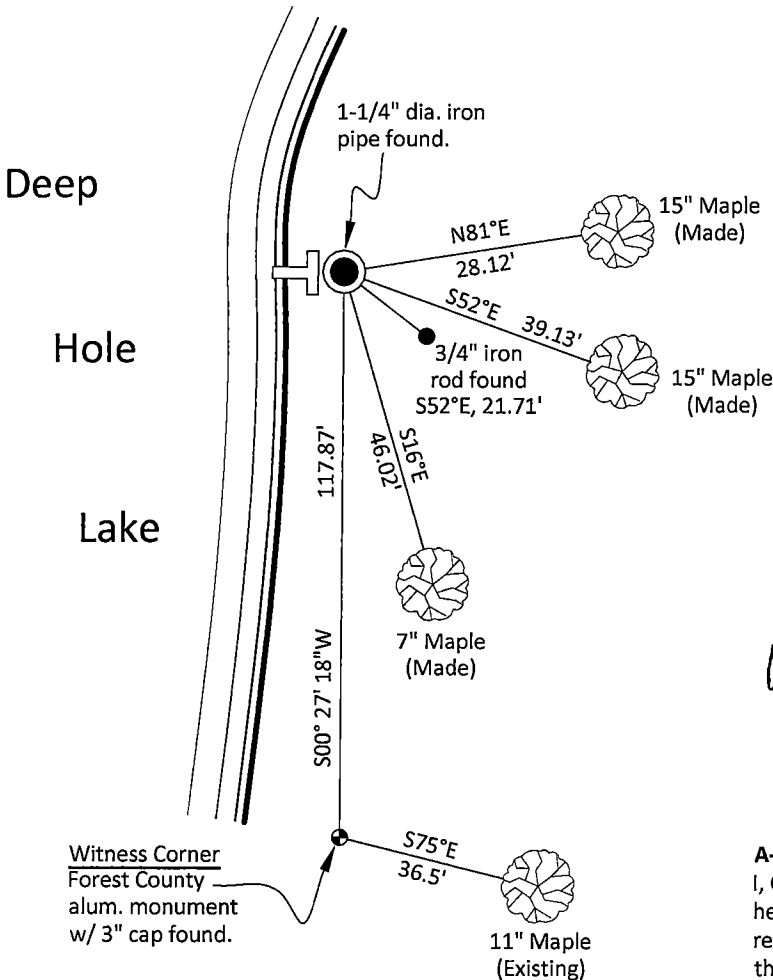


A-E 7.08(3)(b)(e)(f)(g) Describe any record evidence, monument evidence, occupational evidence, testimonial evidence or any other material evidence considered. Describe any discrepancy between the corner restored and any previously established location. State whether the corners was restored through acceptance of obliterated evidence, a found perpetuated location, or determined by proportionate methods.

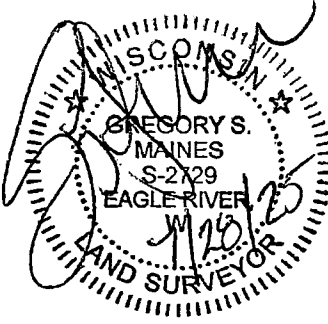
- 07/24/1992 Certified Land Corner Restoration by Glen Barker indicates he set a 1" x 4.0' iron pipe on the south edge of Deep Hole Lake by proportionate measurement. He made three bearing trees and set a witness corner to the south (stamped 117.87'). (See corner form for prior history and additional information).
- 12/20/2002 Eugene C. Uttech, Forest Co Surveyor File # 341305-20021220 indicates a 1" dia. iron pipe found, 21.57 feet from a 3/4" dia. iron rod set between Lots 2 and 3 of his plat of survey of Deep Hole Acres.
- 03/03/2025 I found and accepted a 1-1/4" dia. iron pipe 8" above grade near the shore of Deep Hole Lake, the stumps of two of Barker's bearing trees (12" White Birch and 10" White Birch) a Witness Corner (Forest County aluminum monument) and a 3/4" iron rod from Uttech's survey. I made three additional bearing trees to witness the corner as shown below.

A-E 7.08(3)(c)(d)(e)(h) Plan view of corner with ties to at least four witnesses. If in disagreement with previously established corner, show the distances between the two corners and also indicate the tie to the disputed corner. Distances and directions to other PLSS used as evidence or for proportioning.

Bearings given to the nearest second are Forest County Grid all other bearings are magnetic



- * Vinyl "T" post 0.5' west of corner.
- * Distances to bearing trees are to nail in side. No tags on trees since it is by a residence.
- * Sketch is not to scale



A-E 7.08(3)(i) - Certification
I, Gregory S. Maines, Professional Land Surveyor No. 2729, hereby certify that the corner location on this record was referenced by me or under my direction and control and that this U.S. Public Land Survey Monument Record is complete to the best of my knowledge and belief.

Index No.:

25

43413062000

DOCUMENT NUMBER
145206

FORM 985 M. C. MILLER CO., MILWAUKEE

State of Wisconsin }
County of FOREST } ss.

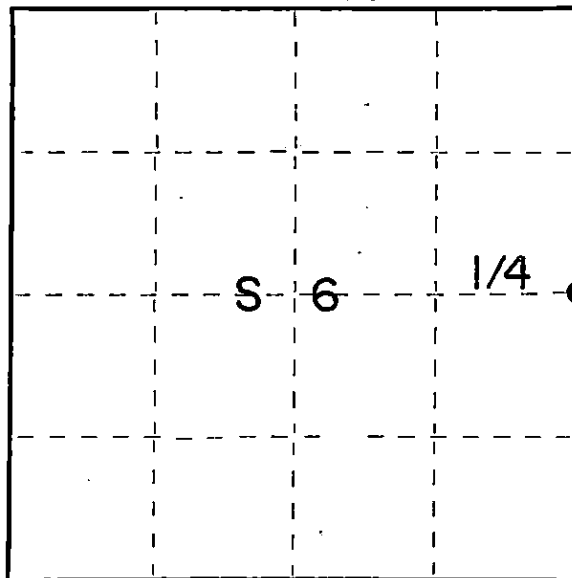
I, Glen Barker, do hereby
certify that on the 6th day
of May, 19 92, I found
evidence of the Quarter Section
corner of Section 5 & 6
Township 34
13 East, North, Range
Fourth Principal Meridian,
as described hereon; and that from this evidence
I established a new monument and accessories
as described hereon to perpetuate the original
location of this corner.

Resident witnesses:

N. Spiess

J. Spiess

T34N R13E



○ = Corner monument restored.

CERTIFIED LAND CORNER RESTORATION
U.S. PUBLIC LAND SURVEY

Index No. C-5

History of original corner establishment:

The original survey of T34N-R13E was surveyed by James L. Nowlin, Government Deputy Surveyor in 1865. No record in original G.L.O. field notes of setting quarter Section corner.

Description of corner evidence found:

Established quarter Section corner on a proportional measurement to the total distance of the original G.L.O. survey.

Total distance from southeast Section corner to northeast Section corner Section 6 is 4487.23'.

Set Quarter Section corner 2534.87' of southeast Section corner and 2352.36' of northeast Section corner on a straight line between the two.

Description of monument and accessories I established to perpetuate the original location of this corner.
Set a 1" x 4.0' iron pipe on the south edge of Deep Hole Lake, projecting 1.0' above ground.

MARKED N.B.T.'s:

White Birch	12"	N34E	18.88'
White Birch	10"	S72E	43.99'
White Birch	8"	S24E	27.33'

(SEE BACK FOR WITNESS CORNER)

Dated at Rhineland, Wis., this 24th day of July, 19 92

Signature Glen Barker Title Registered Land Surveyor Registration No. S-1682
(County Surveyor, Registered Land Surveyor, or other duly authorized official)

Office of Register of Deeds, County of Forest, I hereby certify that the within instrument was filed in this office for record on the 13th day of August, 19 92 at 9:30 o'clock A. M.

Paul Aschenbrenner
(Register of Deeds)

By _____ Deputy

43413062000

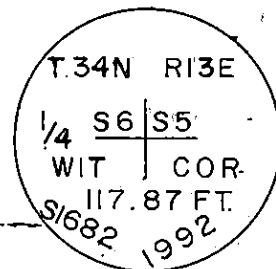
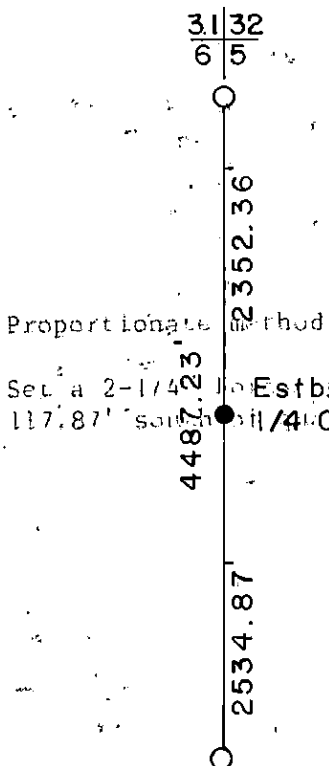
(e) Describe any material discrepancy between the location of the corner as restored or reestablished and the location of that corner as previously restored or reestablished by distance and direction. Show the discrepancy on the plan view drawing under (d), above. Show the distances between the corner as previously restored or reestablished and (1) the corner as restored or reestablished, and (2) to at least 2 of the monuments shown on the drawing in (d), above.

(f) Was the corner restored through acceptance of (1) an obliterated evidence location, or (2) a found perpetuated location?

(g&h) Was the corner reestablished through lost corner proportionate methods? If so, by what method, including the directions and distances to other public land survey corners used as evidence or used for proportioning in determining the corner location?

Proportionate method

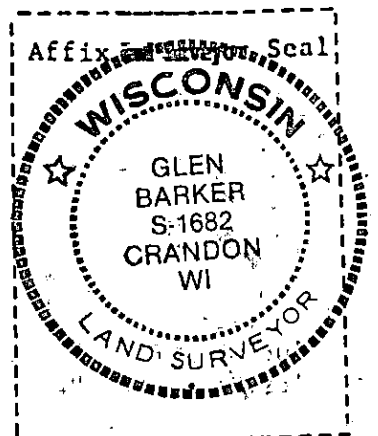
Set a 2-1/4" Forest County Aluminum Monument with 3-1/4" alloy cap on Section line 117.87' south of quarter Section corner for witness corner.



Proportionate method

Set a 2-1/4" Forest County Aluminum Monument with 3-1/4" alloy cap on Section line 117.87' south of quarter Section corner for witness corner.

NBTs to witness corner:
Red Maple 4" S75E 36.50'
Red Maple 4" S2W 18.25'



(i) I, Glen Barker (type or print name) certify that the corner location shown on this record was determined by me or under my direction and control and that this U.S. Public Land Survey Monument Record is correct and complete to the best of my knowledge and belief.

Glen Barker
Signature

7/24/92
Date