

U.S. PUBLIC LAND SURVEY MONUMENT RECORD

This form is intended and designed to fulfill all requirements of Wisconsin Administrative Code, Chapter A-E 7.08 U.S. Public Land Survey Monument Record (3) (a)(b)(c)(d)(e)(f)(g)(h)(i).

The coordinate value shown has been verified by at least one of the following methods: 1) Comparison to a previously GNSS determined published value; 2) The value is the average of two or more GNSS observations at a markedly different time; 3) One or more distances were measured back to the GNSS observed corner from temporary GNSS observed offset locations.

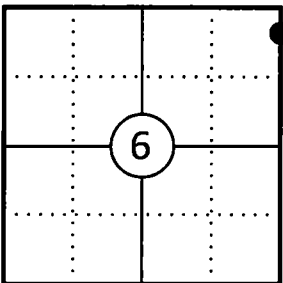
A-E 7.08(3)(a) Identity of the corner:

Meander Corner Section 6	WISCORS - Forest County
Township 34 North	N: 531618.654 USFT
Range 13 East	E: 836127.397 USFT
Town of Nashville	Datum: NAD 83 (2011)
County of Forest	GNSS Method: WISCORS VRS Direct Observation

Original Corner Information:

Original Surveyor: J.L. Nowlin	Original B.T.'s: Fir 8" - N2°W, 20 links
Date of Survey: October 1865	Aspen 9" - N40°E, 3 links

Corner ID: 43413063700



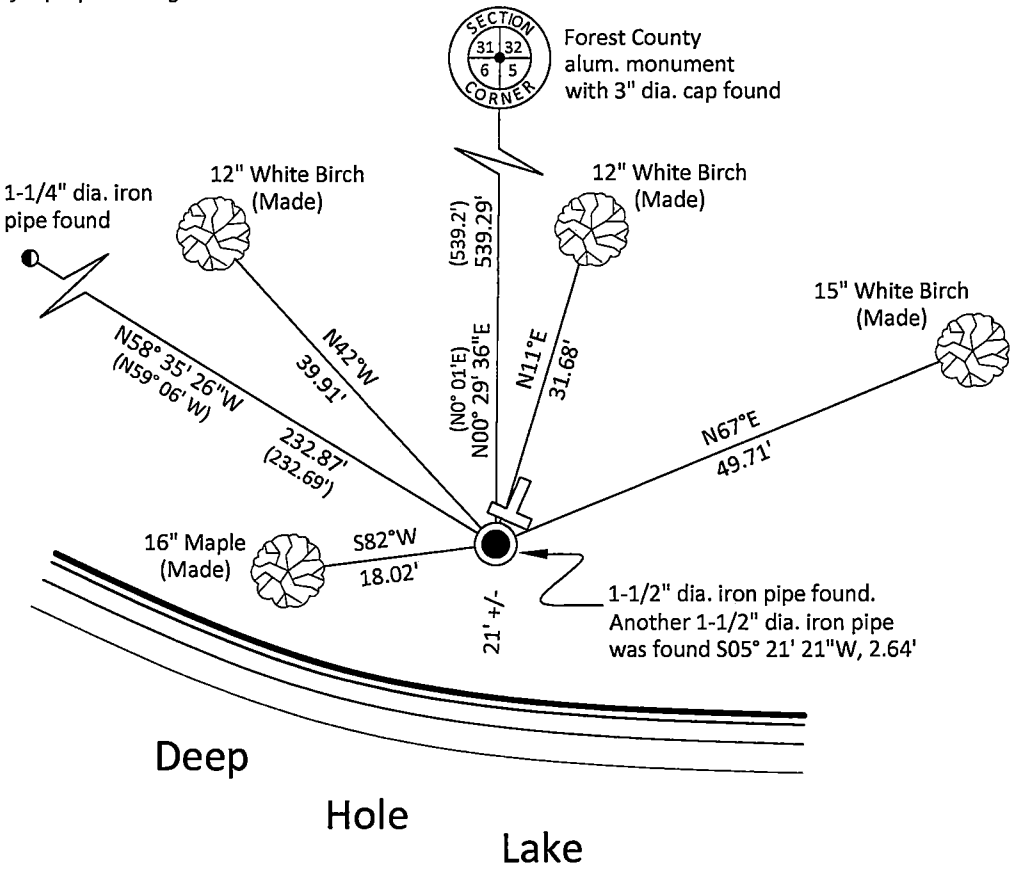
A-E 7.08(3)(b)(e)(f)(g) Describe any record evidence, monument evidence, occupational evidence, testimonial evidence or any other material evidence considered. Describe any discrepancy between the corner restored and any previously established location. State whether the corners was restored through acceptance of obliterated evidence, a found perpetuated location, or determined by proportionate methods.

11/11/1975 Certified Land Corner Restoration by Thomas R. Arnott indicates a 1-1/2" dia. iron pipe was found and replaced with a new Forest County aluminum monument and made two bearing trees. (See corner form for prior history and additional information)

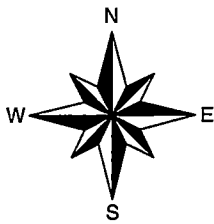
10/09/1975 L. Ernest George, Certified Survey Map Vol. 2, Pg. 121 indicates an iron pipe set.

03/03/2025 I found and accepted a 1-1/2" dia iron pipe at the corner location that agreed with measurements to the section corner to the north and an iron pipe to the northwest as shown on the Certified Survey Map by George. I also found another 1-1/2" dia. iron pipe S05°21'21"W, 2.64' of unknown origin. I did not find the aluminum monument called for by Arnott or his bearing trees. I made four new bearing trees to witness the corner as shown below.

A-E 7.08(3)(c)(d)(e)(h) Plan view of corner with ties to at least four witnesses. If in disagreement with previously established corner, show the distances between the two corners and also indicate the tie to the disputed corner. Distances and directions to other PLSS used as evidence or for proportioning.



Bearings given to the nearest second are Forest County Grid all other bearings are magnetic



- * Vinyl "T" post 0.6' northeast of corner.
- * Distances to bearing trees are to nail in side.
- * Sketch is not to scale



A-E 7.08(3)(i) - Certification
I, Gregory S. Maines, Professional Land Surveyor No. 2729, hereby certify that the corner location on this record was referenced by me or under my direction and control and that this U.S. Public Land Survey Monument Record is complete to the best of my knowledge and belief.

Index No.: 195

434 13063700

CERTIFIED LAND CORNER RESTORATION

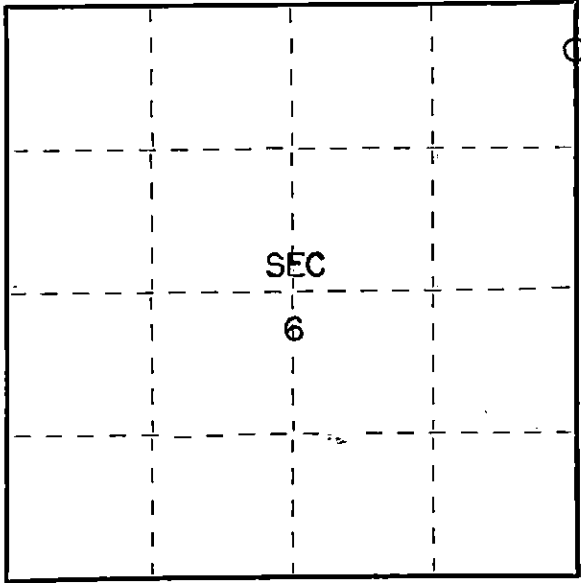
Index No. **B-5**

State of Wisconsin }
County of Forest } ss.

I Thomas R. Arnett, do hereby
certify that on the 21st day
of September, 1975, I found
evidence of the M.C.
corner of sections 5 & 6 north
Township 34, North, Range
13 E, Fourth Principal Meridian,
as described hereon; and that from this evidence
I established a new monument and accessories
as described hereon to perpetuate the original
location of this corner.

Resident witnesses:

Herbert Wagoner



○ = Corner monument restored.

History of original corner establishment:

Original subdivision by James L. Nowlin Oct. 3 - Oct. 16, 1865

m
Fir 8 N2W 20 Lks.
Aspen 9 N40E 3 Lks.

of Deephole Lake

Description of corner evidence found:

1 1/2" iron pipe found

Description of monument and accessories I established to perpetuate the original location of this corner.

Reset pipe with a new Forest County aluminum monument

Ties:

Maple 8 S87E 17.67 feet
Maple 8 S30W 15.87 feet



Dated at Crandon, Wis., this 11th day of November, 1975.

Signature Thomas R. Arnett Title Land Surveyor Registration No. S-887
(County Surveyor, Registered Land Surveyor, or other duly authorized official)

Office of Register of Deeds, County of Forest, I hereby certify that the within
instrument was filed in this office for record on the 11th day of November, 1975
at 4 o'clock P. M.

Eugene Staszny Document Number 108204
(Register of Deeds)

By _____ Deputy

43413063700