

U.S. PUBLIC LAND SURVEY MONUMENT RECORD

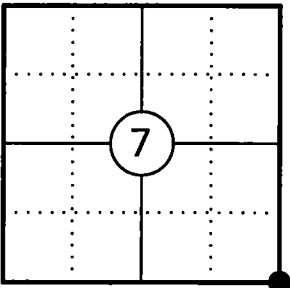
This form is intended and designed to fulfill all requirements of Wisconsin Administrative Code, Chapter A-E 7.08 U.S. Public Land Survey Monument Record (3) (a)(b)(c)(d)(e)(f)(g)(h)(i).

The coordinate value shown has been verified by at least one of the following methods: 1) Comparison to a previously GNSS determined published value; 2) The value is the average of two or more GNSS observations at a markedly different time; 3) One or more distances were measured back to the GNSS observed corner from temporary GNSS observed offset locations.

A-E 7.08(3)(a) Identity of the corner:

SE Corner Section 7	WISCRS - Forest County
Township 34 North	N: 522044.117 USFT
Range 13 East	E: 835749.927 USFT
Town of Nashville	Datum: NAD 83 (2011)
County of Forest	GNSS Method: WISCRS VRS Direct Observation

Corner ID: 43413070000



Original Corner Information:

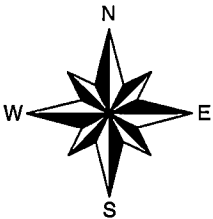
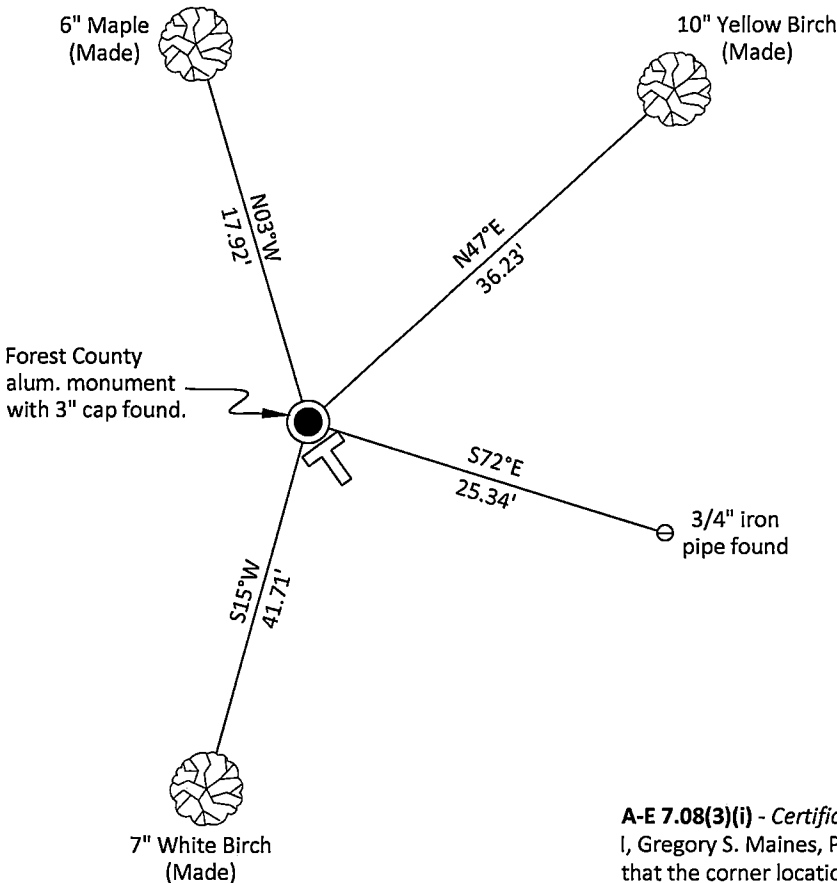
Original Surveyor: J.L. Nowlin	Original B.T.'s: Birch 10" - N36°E, 50 links
Date of Survey: October 1865	Hemlock 16" - N74°W, 45 links

A-E 7.08(3)(b)(e)(f)(g) Describe any record evidence, monument evidence, occupational evidence, testimonial evidence or any other material evidence considered. Describe any discrepancy between the corner restored and any previously established location. State whether the corners was restored through acceptance of obliterated evidence, a found perpetuated location, or determined by proportionate methods.

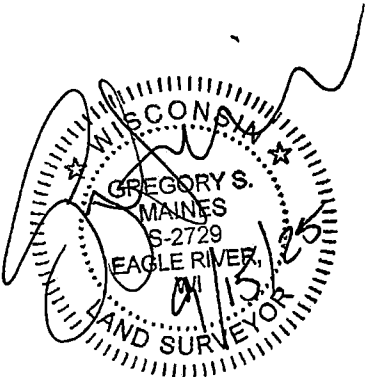
- 11/03/1981 Certified Land Corner Restoration by Daniel K. Pleoger indicates he set a 2-1/2" dia. aluminum A-1 federal monument with alloy cap in place of a found 2" dia. iron pipe with a 1/2" dia. iron pipe alongside. (See corner form for prior history and additional information).
- 1966 W.H. Stuth indicates iron pipe or cap along with two bearing trees: 9" Y.B. - N89°E, 14.0' and 5" Mpl - S24°E, 8.0' on a survey prepared on March 5, 1987.
- 3/08/2010 Michael A Tremel, Forest Co Surveyor File # 341307-20100308 shows an existing found 2-1/4" dia. aluminum pipe monument.
- 03/10/2025 I found and accepted a Forest County aluminum monument with a 3" dia. cap stamped to identify the corner 8" above grade. The found monument matches Tremel's position. We also found a 3/4" dia. iron pipe 25.34 feet to the southeast of the corner. None of the bearing trees previously documented on Pleoger's Certified Land Corner Restoration form were found. We used the found 3/4" dia. iron pipe as a reference corner and made three new bearing trees to witness the corner as shown below.

A-E 7.08(3)(c)(d)(e)(h) Plan view of corner with ties to at least four witnesses. If in disagreement with previously established corner, show the distances between the two corners and also indicate the tie to the disputed corner. Distances and directions to other PLSS used as evidence or for proportioning.

Bearings given to the nearest second are Forest County Grid. All other bearings are magnetic



- * Vinyl "T" post 0.7' southeast of corner.
- * Distances to bearing trees are to nail in side with BT tag on tree.
- * Sketch is not to scale



A-E 7.08(3)(i) - Certification

I, Gregory S. Maines, Professional Land Surveyor No. 2729, hereby certify that the corner location on this record was referenced by me or under my direction and control and that this U.S. Public Land Survey Monument Record is complete to the best of my knowledge and belief.

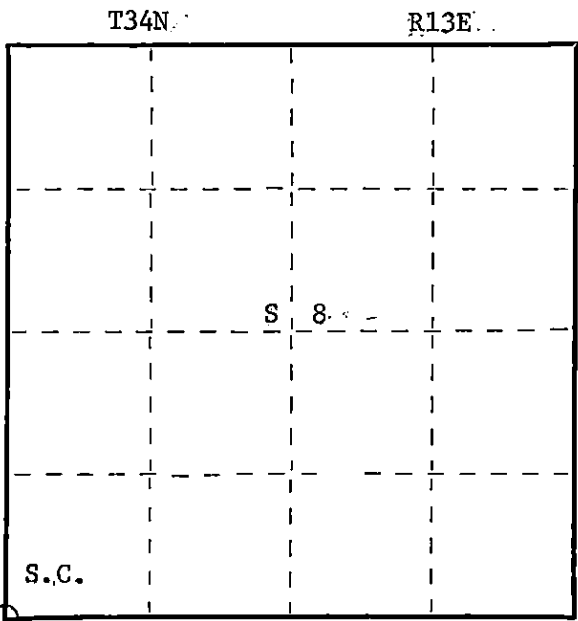
CERTIFIED LAND CORNER RESTORATION

Index No. 155

State of Wisconsin }
County of Forest } ss.

I Daniel K. Pleoger, do hereby
certify that on the 23 day
of July, 1981, I found
evidence of the Section
corner of Sections 7, 8, 17, 18
Township 34, North, Range
13 East, Fourth Principal Meridian,
as described hereon; and that from this evidence
I established a new monument and accessories
as described hereon to perpetuate the original
location of this corner.

Resident witnesses:



○ = Corner monument restored.

History of original corner establishment:

Original corner established by James L. Nowlin, deputy surveyor in 1865 from which
birch 10" bears N36E 50 lks and hemlock 16" bears N74W, 45 lks

Description of corner evidence found:

Recovered a 2" x 30" iron pipe, also a 1/2" iron pipe driven alongside 2" iron pipe.
Recovered OBTs
Basswood 8" S59E 5.80 ft - scribed B.T. - Now dead
Sugar 6" S84W 16.10 ft - scribed B.T.

Description of monument and accessories I established to perpetuate the original location of this corner.

Replaced 2" iron pipe with a 2 1/2" aluminum A-1 Federal monument with alloy cap stamped:
Monument projects 8" above ground.

Marked NBTs

Maple 5" due east 17.30 ft.
Yellow birch 5" N14E 18.93 ft.
Scribed S.C. - B.T.

T34N R13E

7	8
18	17

S1537 - 1981

Dated at Rhineland, Wis., this 3rd day of November, 1981

Signature Daniel K. Pleoger Title Registered Land Surveyor Registration No. 1537
(County Surveyor, Registered Land Surveyor, or other duly authorized official)

Office of Register of Deeds, County of Forest, I hereby certify that the within
instrument was filed in this office for record on the 9th day of April, 1982
at 1:00 o'clock A. M.

(Register of Deeds)

By _____ Deputy

DOCUMENT NO. **121385**

FORM 985 H. C. MILLER CO., MILWAUKEE

43413070000