

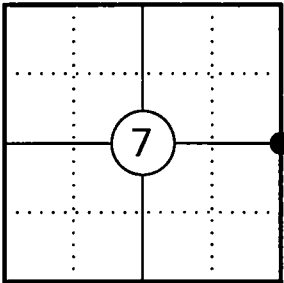
FILED ON:
11/11/2025 03:52 PM
CORTNEY BRITTEN CLEEREMAN
REGISTER OF DEEDS
FOREST COUNTY WI
PAGES: 1

U.S. PUBLIC LAND SURVEY MONUMENT RECORD

This form is intended and designed to fulfill all requirements of Wisconsin Administrative Code, Chapter A-E 7.08 U.S. Public Land Survey Monument Record (3) (a)(b)(c)(d)(e)(f)(g)(h)(i).

The coordinate value shown has been verified by at least one of the following methods: 1) Comparison to a previously GNSS determined published value; 2) The value is the average of two or more GNSS observations at a markedly different time; 3) One or more distances were measured back to the GNSS observed corner from temporary GNSS observed offset locations.

Corner ID: 43413072000



A-E 7.08(3)(a) Identity of the corner:

E 1/4 Corner Section 7	WISCRS - Forest County
Township 34 North	N: 524657.507 USFT
Range 13 East	E: 835921.806 USFT
Town of Nashville	Datum: NAD 83 (2011)
County of Forest	GNSS Method: WISCRS VRS Direct Observation

Original Corner Information:

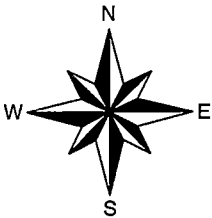
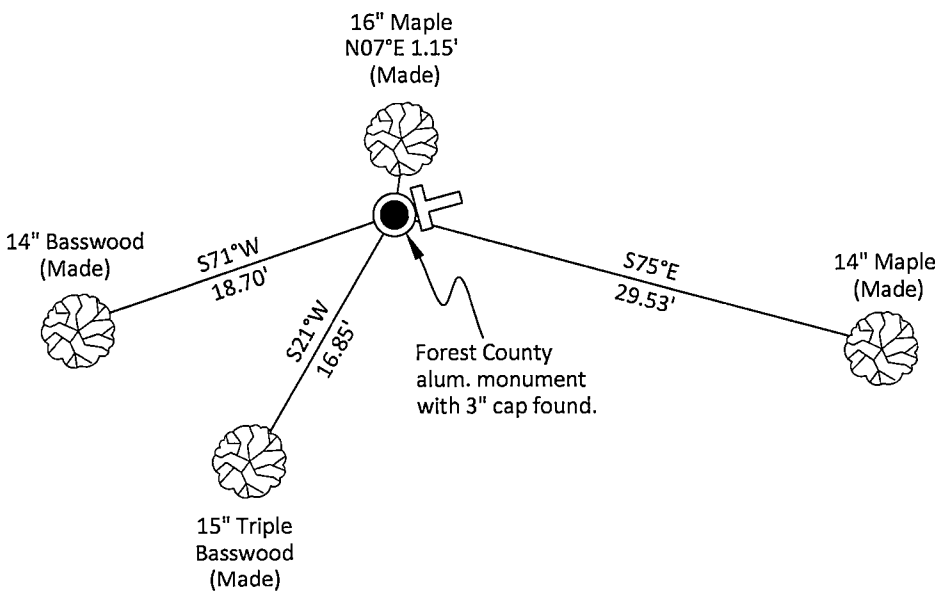
Original Surveyor: J.L. Nowlin	Original B.T.'s: Hemlock 26" - S86°E, 10 links
Date of Survey: October 1865	Fir 9" - N73°W, 25 links

A-E 7.08(3)(b)(e)(f)(g) Describe any record evidence, monument evidence, occupational evidence, testimonial evidence or any other material evidence considered. Describe any discrepancy between the corner restored and any previously established location. State whether the corners was restored through acceptance of obliterated evidence, a found perpetuated location, or determined by proportionate methods.

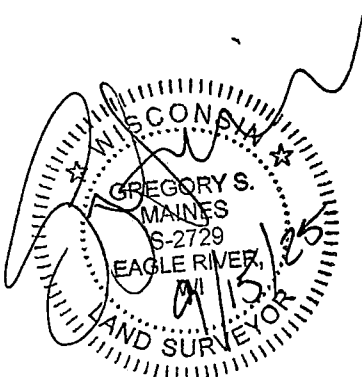
- 11/04/1981 Certified Land Corner Restoration by Daniel K. Pleoger indicates he set a 2-1/2" dia. aluminum A-1 federal monument by single proportion midway between the northeast and southeast corners of Section 7 . (See corner form for prior history and additional information).
- 3/08/2010 Michael A. Trembl, Forest Co Surveyor File #341307-20100308 shows a found 2-1/4" dia. aluminum pipe monument.
- 03/10/2025 I found and accepted a Forest County aluminum monument with a 3" dia. cap stamped to identify the corner 10" above grade. The found monument matches Trembl's position and is pretty close to midway between the northeast and southeast corners of Section 7. None of the bearing trees previously shown on Pleoger's Certified Land Corner Restoration form were found. I made four new bearing trees to witness the corner as shown below.

A-E 7.08(3)(c)(d)(e)(h) Plan view of corner with ties to at least four witnesses. If in disagreement with previously established corner, show the distances between the two corners and also indicate the tie to the disputed corner. Distances and directions to other PLSS used as evidence or for proportioning.

Bearings given to the nearest second are Forest County Grid. All other bearings are magnetic



- * Vinyl "T" post 1.2' northeast of corner.
- * Distances to bearing trees are to nail in side with BT tag on tree.
- * Sketch is not to scale



A-E 7.08(3)(i) - Certification
I, Gregory S. Maines, Professional Land Surveyor No. 2729, hereby certify that the corner location on this record was referenced by me or under my direction and control and that this U.S. Public Land Survey Monument Record is complete to the best of my knowledge and belief.

Index No.:

65

43413 072000

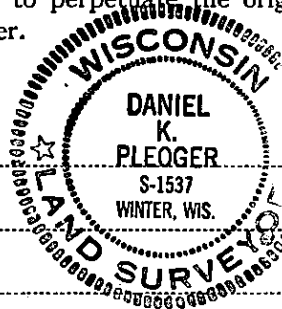
CERTIFIED LAND CORNER RESTORATION

Index No. **6-55**

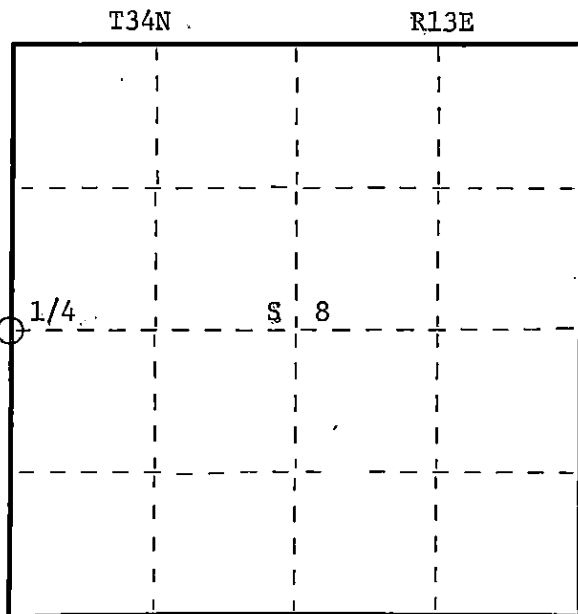
State of Wisconsin }
County of Forest } ss.

I, Daniel K. Pleoger, do hereby
certify that on the 23 day
of July, 19 81, I found
Est. evidence of the Quarter
corner of Sections 7 & 8
Township 34, North, Range
13 East, Fourth Principal Meridian,
as described hereon; and that from this evidence
I established a new monument and accessories
as described hereon to perpetuate the original
location of this corner.

Resident witnesses:



FORM 985 M. & M. LEE CO., MILWAUKEE



○ = Corner monument restored.

History of original corner establishment:

Original corner established by James L. Nowlin, Deputy Surveyor in 1865 from which
hemlock 26" bears S86E 10.1ks and fir 9" bears N73W 35 lks.

Description of corner evidence found:

Ran traverse from section corner 5, 6, 7, 8 to section corner 7, 8, 17, 18 for
a distance of 5072.132 ft. at bearing S3-45-51W.
Set 1/4 corner 2536.066 ft. intermediate.

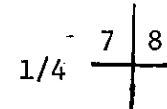
Description of monument and accessories I established to perpetuate the original location of this corner.

Set a 2 1/2" aluminum A-1 federal monument with alloy cap stamped:
Monument projects 12" above ground.

Marked NBTs

Sugar 7" N82E 12.91 ft.
Sugar 5" S32E 12.16 ft.
Sugar 5" S81W 28.88 ft.
Scribed 1/4 - B.T.

T34N R13E



S1537 - 1981

Dated at Rhineland, Wis., this 4th day of November, 19 81

Signature Daniel K. Pleoger Title Registered Land Surveyor Registration No. 1537
(County Surveyor, Registered Land Surveyor, or other duly authorized official)

Office of Register of Deeds, County of Forest, I hereby certify that the within
instrument was filed in this office for record on the 9th day of April, 19 82
at 11:00 o'clock A. M.

(Register of Deeds)

By _____ Deputy

DOCUMENT NO. **121384**

43413072000