

U.S. PUBLIC LAND SURVEY MONUMENT RECORD

This form is intended and designed to fulfill all requirements of Wisconsin Administrative Code, Chapter A-E 7.08 U.S. Public Land Survey Monument Record (3) (a)(b)(c)(d)(e)(f)(g)(h)(i).

The coordinate value shown has been verified by at least one of the following methods: 1) Comparison to a previously GNSS determined published value; 2) The value is the average of two or more GNSS observations at a markedly different time; 3) One or more distances were measured back to the GNSS observed corner from temporary GNSS observed offset locations.

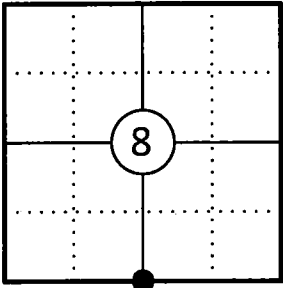
A-E 7.08(3)(a) Identity of the corner:

S 1/4 Corner Section 8	WISCORS - Forest County
Township 34 North	N: 522038.303 USFT
Range 13 East	E: 838322.828 USFT
Town of Nashville	Datum: NAD 83 (2011)
County of Forest	GNSS Method: WISCORS VRS Direct Observation

Original Corner Information:

Original Surveyor: J.L. Nowlin	Original B.T.'s: Hemlock 18" - N15°W, 28 links
Date of Survey: October 1865	Hemlock 12" - S39°E, 18 links

Corner ID: 43413080020

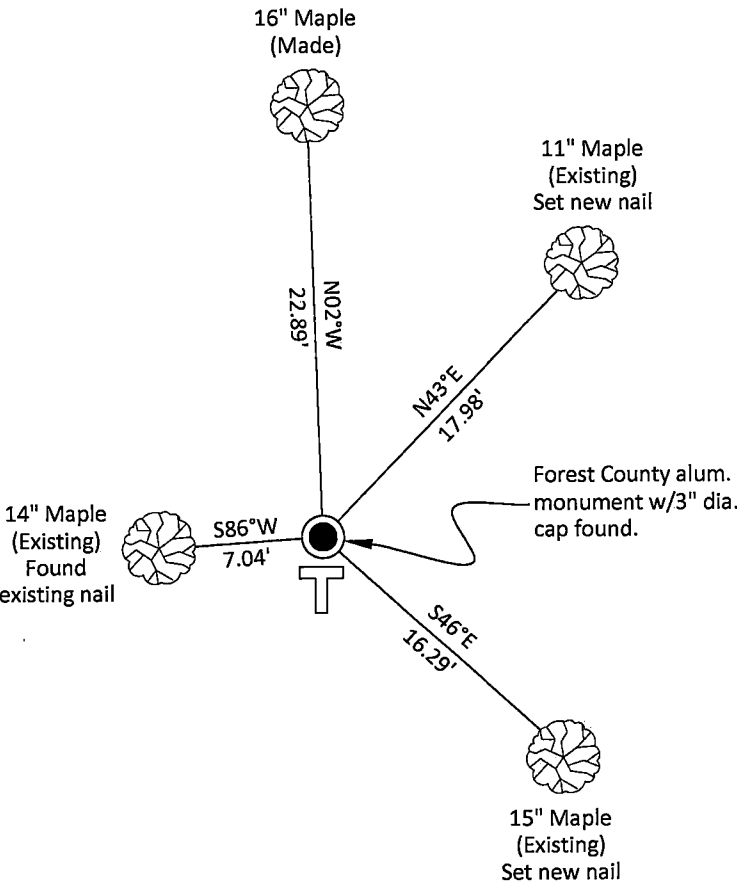


A-E 7.08(3)(b)(e)(f)(g) Describe any record evidence, monument evidence, occupational evidence, testimonial evidence or any other material evidence considered. Describe any discrepancy between the corner restored and any previously established location. State whether the corners was restored through acceptance of obliterated evidence, a found perpetuated location, or determined by proportionate methods.

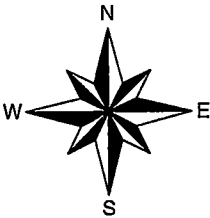
09/17/1981 Certified Land Corner Restoration by Daniel K. Pleoger indicates he set a 2 1/2" dia. aluminum A-1 federal monument with alloy cap by proportionate measurement and made three new bearing trees. (See corner form for prior history and additional information).

04/04/2025 I found and accepted a Forest County aluminum monument with a 3" dia. cap stamped to identify the corner 10" above grade and all three of Pleoger's bearing trees. I made one additional bearing tree to witness the corner as shown below.

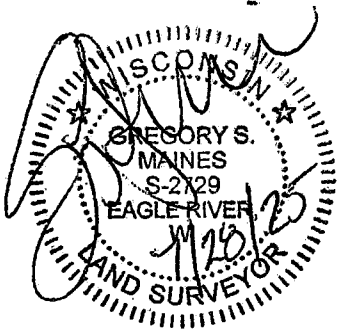
A-E 7.08(3)(c)(d)(e)(h) Plan view of corner with ties to at least four witnesses. If in disagreement with previously established corner, show the distances between the two corners and also indicate the tie to the disputed corner. Distances and directions to other PLSS used as evidence or for proportioning.



Bearings given to the nearest second are Forest County Grid all other bearings are magnetic



- \* Vinyl "T" post 0.8' south of corner.
- \* Distances to bearing trees are to nail in side with BT tag on tree.
- \* Sketch is not to scale



A-E 7.08(3)(i) - Certification  
I, Gregory S. Maines, Professional Land Surveyor No. 2729, hereby certify that the corner location on this record was referenced by me or under my direction and control and that this U.S. Public Land Survey Monument Record is complete to the best of my knowledge and belief.

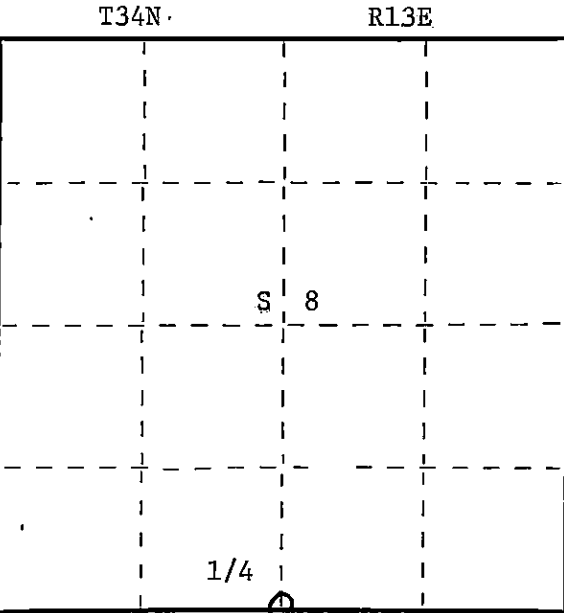
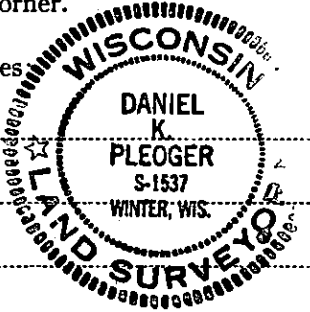
CERTIFIED LAND CORNER RESTORATION

Index No. **J-77**

State of Wisconsin }  
County of Forest } ss.

I Daniel K. Pleoger, do hereby  
certify that on the 9 day  
of July, 1981, I ~~was~~  
Est. ~~existence~~ the Quarter  
corner of Sections 8 & 17  
Township 34, North, Range  
13 East, Fourth Principal Meridian,  
as described hereon; and that from this evidence  
I established a new monument and accessories  
as described hereon to perpetuate the original  
location of this corner.

Resident witnesses



○ = Corner monument restored.

History of original corner establishment:

Original corner established by James L. Nowlin Gov. Deputy Surveyor in 1865 from  
which hemlock 18" bears N15W 28 lks and hemlock 12" bears S39E 18 lks.

Description of corner evidence found:

Ran traverse from section corner 8-19-16-17 to section corner 7-8-17-18 for a  
distance of 5145.325 ft. at bearing N89-26-27W  
S 1/4 corner 2572.66 intermediate

Description of monument and accessories I established to perpetuate the original location of this corner.

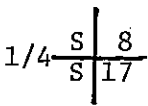
Set a 2 1/2" aluminum A-1 federal monument with alloy cap stamped:

Monument projects 12" above ground.

Marked NETs

- Sugar 7" S86W 6.80 ft.
- Sugar 7" S46E 15.99 ft.
- Sugar 5" N43E 17.96 ft. - Scribed 1/4 - B.T.

T34N R13E



S1537 - 1981

Dated at Rhineland, Wis., this 17 day of September, 1981

Signature Daniel K. Pleoger Title Registered Land Surveyor Registration No. 1537  
(County Surveyor, Registered Land Surveyor, or other duly authorized official)

Office of Register of Deeds, County of Forest, I hereby certify that the within  
instrument was filed in this office for record on the 25th day of September, 1981  
at 2:00 o'clock P. M.

Eugene J. Stetson  
(Register of Deeds)

By \_\_\_\_\_ Deputy

DOCUMENT NO. **120525**

FORM 985 H. C. MILLER CO., MILWAUKEE

43413080020