

U.S. PUBLIC LAND SURVEY MONUMENT RECORD

This form is intended and designed to fulfill all requirements of Wisconsin Administrative Code, Chapter A-E 7.08 U.S. Public Land Survey Monument Record (3) (a)(b)(c)(d)(e)(f)(g)(h)(i).

The coordinate value shown has been verified by at least one of the following methods: 1) Comparison to a previously GNSS determined published value; 2) The value is the average of two or more GNSS observations at a markedly different time; 3) One or more distances were measured back to the GNSS observed corner from temporary GNSS observed offset locations.

247019

FILED ON:

10/21/2025 09:59 AM

CORTNEY BRITTEN CLEEREMAN  
REGISTER OF DEEDS

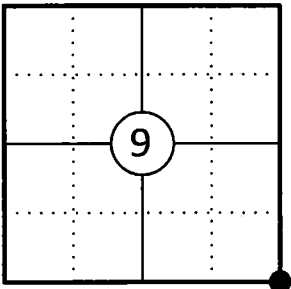
FOREST COUNTY WI

PAGES: 1

A-E 7.08(3)(a) Identity of the corner:

SE Corner Section 9	WISCRS - Forest County
Township 34 North	N: 522051.296 USFT
Range 13 East	E: 846090.960 USFT
Town of Nashville	Datum: NAD 83 (2011)
County of Forest	GNSS Method: WISCORS VRS Direct Observation

Corner ID: 43413090000



Original Corner Information:

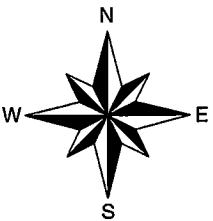
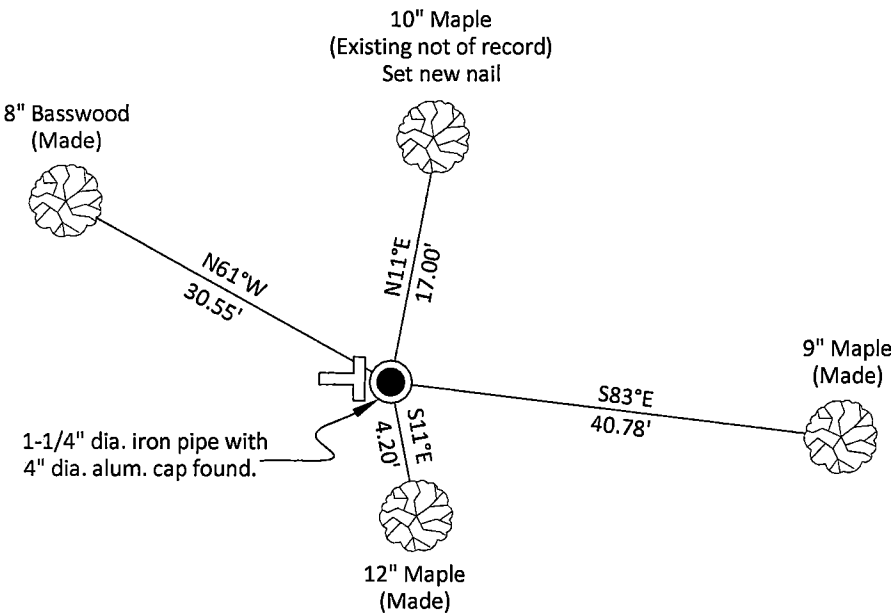
Original Surveyor: J.L. Nowlin	Original B.T.'s: Lind 12" - N29°W, 26 links
Date of Survey: October 1865	Sugar 8" - N34°E, 32 links

A-E 7.08(3)(b)(e)(f)(g) Describe any record evidence, monument evidence, occupational evidence, testimonial evidence or any other material evidence considered. Describe any discrepancy between the corner restored and any previously established location. State whether the corners was restored through acceptance of obliterated evidence, a found perpetuated location, or determined by proportionate methods.

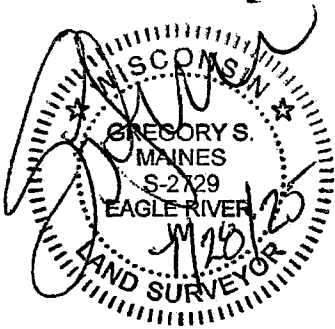
- 10/28/1963 Restoration of Lost Original Government Survey Corner by Neal Sperhake indicates he set a 1" dia. iron pipe with a Kimberly Clark Corp aluminum cap and made four new bearing trees. (See corner form for prior history and additional information).
- 06/29/2004 Matthew E. Hoglund, Forest Co Surveyor File # 341309-20040629 found a 1" dia. iron pipe with 4" cap.
- 05/09/2006 Michael A Trembl, Plat of Crawford Lake Estates indicates an existing 1" dia. iron pipe w/4" aluminum cap.
- 12/04/2012 Michael S. Hess, Forest Co Surveyor File # 341315-20121204 indicates an aluminum monument at the corner.
- 11/02/2024 Charles Oleinik, Forest Co Surveyor File # 341316-20241102 indicates an aluminum monument at the corner.
- 04/01/2025 I found and accepted a 1-1/4" dia. iron pipe with a Kimberly Clark Corp 4" dia. aluminum cap stamped to identify the corner 8" above grade and one existing bearing tree not of record. I made three additional bearing trees to witness the corner as shown below.

A-E 7.08(3)(c)(d)(e)(h) Plan view of corner with ties to at least four witnesses. If in disagreement with previously established corner, show the distances between the two corners and also indicate the tie to the disputed corner. Distances and directions to other PLSS used as evidence or for proportioning.

Bearings given to the nearest second are Forest County Grid  
all other bearings are magnetic



- \* Vinyl "T" post 0.8' west of corner.
- \* Distances to bearing trees are to nail in side with BT tag on tree.
- \* Sketch is not to scale



A-E 7.08(3)(i) - Certification

I, Gregory S. Maines, Professional Land Surveyor No. 2729, hereby certify that the corner location on this record was referenced by me or under my direction and control and that this U.S. Public Land Survey Monument Record is complete to the best of my knowledge and belief.

Index No.:

513

43413090000

State of Wisconsin

County of FOREST

ss. RESTORATION OF LOST ORIGINAL GOVERNMENT SURVEY CORNER.

I NEAL SPERHAKE, do hereby certify that on the TWENTY EIGHTH day of OCTOBER, 1963, I established the NORTHWEST SECTION CORNER OF SECTION 15, TOWNSHIP 34 NORTH, RANGE 13 EAST, Fourth Principal Meridian, as described hereon.

History: This corner was established during the original survey of this township, as noted in the original field notes for the original survey of T34N-R13E, 4th. p.m.

Description of monument and accessories I established to perpetuate the location of this corner:

At the point determined for the location of the corner I emplaced a:

GALVANIZED IRON PIPE, THREE FEET LONG, ONE INCH IN DIAMETER, WITH ALUMINUM CAP DENOTED AS, "KIMBERLY CLARK CORP. T34N 9, 10, 15, 16 R13E SPERHAKE RLS 463 10/28/63."

The pipe is witnessed by:

Aspen 11 N 57°E 26½ links. (SCRIBED S10 NBT).  
Aspen 7 S 50°E 16 links. (SCRIBED S15 NBT).  
Aspen 8 S 56°W 18 links. (SCRIBED S16 NBT).  
Aspen 10 N 67°W 19½ links. (SCRIBED S 9 NBT).

Description as to how corner was located: No evidence of the original corner is present. Thus, attempted to set the corner by double proportionate measurement. To the north the corner of 3, 4, 9, 10, and to the south the corner of 15, 16, 21, 22, had been previously set. The distance between them is 156.75 chains. Thus, the north-south position of 9, 10, 15, 16, would be 78.37½ chains from either previously set corner. To the east the corner of 10, 11, 14, 15, and to the west the corner of 8, 9, 16, 17, had been previously set, with a distance of 165.06 chains between them. Thus, the east-west position of 9, 10, 15, 16, would be 82.53 chains from either previously set corner. 81.06 chains north of 15, 16, 21, 22, and 78.74 chains east of 8, 9, 16, 17, is the junction of a blaze line running north and west. Ralph Cook, a resident and logger on Arbutus Lake, states that about thirty years ago at the junction of these blaze lines was a post which his father had told him was the accepted section corner for 9, 10, 15, 16. Experience in surveying in this area has taught us that the original survey was erratic here, and the proportionate measurement very rarely ever corresponded with the actual position of located original corners. In the course of this present retracement survey a post, accepted locally as the quarter section corner between 15 and 16, was located 40.53 chains north of the corner of 15, 16, 21, 22. A straight line projected northward between these two corners for exactly 40.53 chains ends up at the junction of the above noted blaze lines tentatively denoting the corner of 9, 10, 15, 16. Cook has also stated that the post marking the quarter section corner between 15 and 16 was set during the thirties by a Federal agency that was doing retracement survey work in this particular area as part of the public works programs of those days. It is his opinion, and it is (continued on back)

0 = Corner monument restored

Subscribed & sworn to before me this 25 day of Aug 1964  
Anna Peterson  
NOTARY PUBLIC FOREST CO WIS  
COM. EXPIRES 10/31/65

Resident witnesses

Dated at Crandon, Wisconsin, this 25 day of Aug, 19 64.

Signature Neal Sperhake  
Title Reg. Land Surveyor Registration No. 463

Office of Reg. of Deeds County of Forest  
I hereby certify that the within instrument was filed in this office for record on the 25 day of Aug 19 64, and was filed in Book No. 4313090000 Page No. 1 of County Records.

Surveyor's Seal

Signature Anna Peterson Title Reg. of Deeds

88953

Index No.

4313090000

so coincidental that I agree with it, that the corner of 9, 10, 15, 16 was present thirty years ago, and probably even witnessed yet by an original bearing tree. A straight line was run between it and the corner of 15, 16, 21, 22, and the quarter section corner of 15 and 16 set half way between them. Now that the post denoting the corner of 9, 10, 15, 16, is missing, I have replaced it by reversing the situation and prolonging a straight line northward between the corner of 15, 16, 21, 22 and the quarter section corner between 15 and 16, for a distance of 40.53 chains north of the quarter corner, thus accepting the location as denoted by the blaze lines and pointed out by Ralph Cook as the corner for 9, 10, 15, 16.

