

U.S. PUBLIC LAND SURVEY MONUMENT RECORD

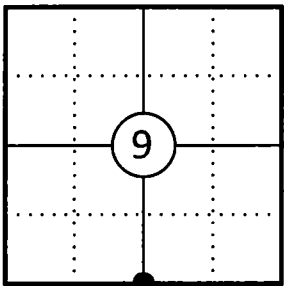
This form is intended and designed to fulfill all requirements of Wisconsin Administrative Code, Chapter A-E 7.08 U.S. Public Land Survey Monument Record (3) (a)(b)(c)(d)(e)(f)(g)(h)(i).

The coordinate value shown has been verified by at least one of the following methods: 1) Comparison to a previously GNSS determined published value; 2) The value is the average of two or more GNSS observations at a markedly different time; 3) One or more distances were measured back to the GNSS observed corner from temporary GNSS observed offset locations.

A-E 7.08(3)(a) Identity of the corner:

S 1/4 Corner Section 9	WISCRS - Forest County
Township 34 North	N: 522043.809 USFT
Range 13 East	E: 843468.300 USFT
Town of Nashville	Datum: NAD 83 (2011)
County of Forest	GNSS Method: WISCORS VRS Direct Observation

Corner ID: 43413090020



Original Corner Information:

Original Surveyor: J.L. Nowlin	Original B.T.'s: Hemlock 9" - S22°W, 5 links
Date of Survey: October 1865	Hemlock 12" - N39°E, 25 links

A-E 7.08(3)(b)(e)(f)(g) Describe any record evidence, monument evidence, occupational evidence, testimonial evidence or any other material evidence considered. Describe any discrepancy between the corner restored and any previously established location. State whether the corners was restored through acceptance of obliterated evidence, a found perpetuated location, or determined by proportionate methods.

06/30/1983 Certified Land Corner Restoration by Glen Barker indicates he set a Forest County 2-1/2" A-1 monument in place of iron pipe found and made four new bearing trees. (See corner form for prior history and additional information).

11/17/1997 Michael E. Weber, Forest Co Surveyor File # 341309-19971117 found an aluminum capped monument.

06/29/2004 Matthew E. Hoglund, Forest Co Surveyor File # 341309-20040629 found a 2" dia. county aluminum monument.

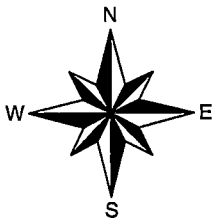
07/11/2005 Daniel E. Higginbotham, Forest County CSM V7, P91 found a 1.5" dia. capped monument.

06/02/2015 Thomas J McQuire, Forest Co Surveyor File # 341316-20150602 found a 4" aluminum monument.

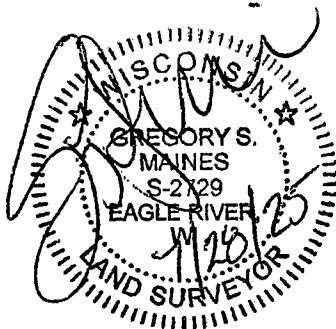
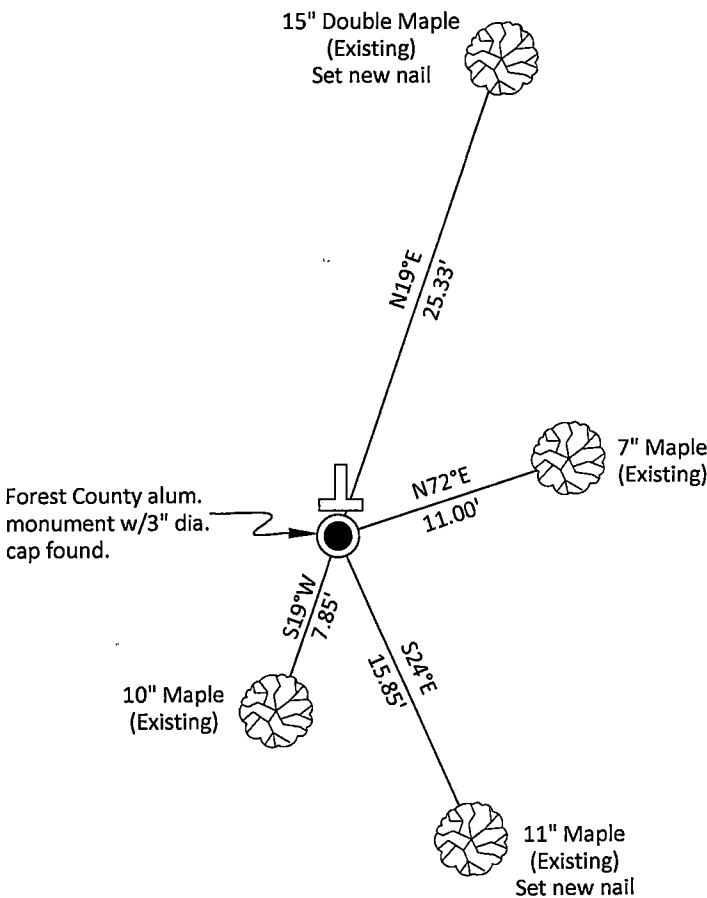
04/04/2025 I found and accepted a Forest County aluminum monument with a 3" dia. cap stamped to identify the corner 8" above grade and all four of Barker's bearing trees. The corner is witnessed as shown below.

A-E 7.08(3)(c)(d)(e)(h) Plan view of corner with ties to at least four witnesses. If in disagreement with previously established corner, show the distances between the two corners and also indicate the tie to the disputed corner. Distances and directions to other PLSS used as evidence or for proportioning.

Bearings given to the nearest second are Forest County Grid all other bearings are magnetic



- \* Vinyl "T" post 0.8' north of corner.
- \* Distances to bearing trees are to nail in side with BT tag on tree.
- \* Sketch is not to scale



A-E 7.08(3)(i) - Certification

I, Gregory S. Maines, Professional Land Surveyor No. 2729, hereby certify that the corner location on this record was referenced by me or under my direction and control and that this U.S. Public Land Survey Monument Record is complete to the best of my knowledge and belief.

CERTIFIED LAND CORNER RESTORATION

Index No. **J 11**

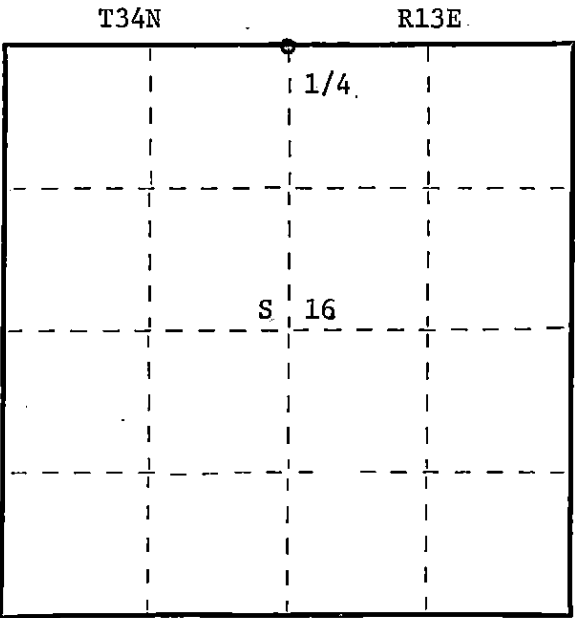
State of Wisconsin }  
County of Forest } ss.

I, Glen Barker, do hereby  
certify that on the 25th day  
of May, 1983, I found  
evidence of the Quarter  
corner of Sections 9 and 16  
Township 34, North, Range  
13 East, Fourth Principal Meridian,  
as described hereon; and that from this evidence  
I established a new monument and accessories  
as described hereon to perpetuate the original  
location of this corner.

Resident witnesses:

J. Claflin, Reg. Land Surveyor

H. Wagoner



○ = Corner monument restored.

History of original corner establishment:

Original corner established in 1865 by James Nowlin, government deputy surveyor,  
from which hemlock 9" bears S22W 5 links and hemlock 12" N39E 25 links.

Description of corner evidence found:

Recovered an old 1" iron pipe and 5" square cedar post for 1/4 corner.

Description of monument and accessories I established to perpetuate the original location of this corner.

Placed a Forest County 2-1/2" A-1 monument in position of old iron pipe - cap stamped:  
Monument projects 6" above ground.

Marked NBT's:

Sugar 7" S19W 7.09 feet )  
Maple 6" S24E 16.17 feet )  
Sugar 5" N72E 11.03 feet ) scribed 1/4 B.T.  
Twin Maple 7" N19E 25.72 feet )

T34N R13E  
1/4 S 9  
S 16  
S1682-1983

Dated at Rhinelander, Wis., this 30th day of June, 1983

Signature Glen Barker Title Registered Land Surveyor Registration No. S-1682  
(County Surveyor, Registered Land Surveyor, or other duly authorized official)

Office of Register of Deeds, County of Forest, I hereby certify that the within  
instrument was filed in this office for record on the 26th day of July, 1983  
at 11:55 o'clock A. M.

Eugene Stutzman  
(Register of Deeds)

By \_\_\_\_\_ Deputy

DOCUMENT NO. **123854**

FORM 985  
N.C. Miller Company  
Stock No. 26272

43413090020