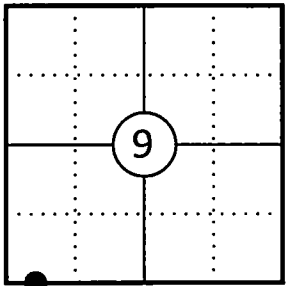


U.S. PUBLIC LAND SURVEY MONUMENT RECORD

This form is intended and designed to fulfill all requirements of Wisconsin Administrative Code, Chapter A-E 7.08 U.S. Public Land Survey Monument Record (3) (a)(b)(c)(d)(e)(f)(g)(h)(i).

The coordinate value shown has been verified by at least one of the following methods: 1) Comparison to a previously GNSS determined published value; 2) The value is the average of two or more GNSS observations at a markedly different time; 3) One or more distances were measured back to the GNSS observed corner from temporary GNSS observed offset locations.

Corner ID: 43413090037



A-E 7.08(3)(a) Identity of the corner:

Meander Corner Section 9	WISCORS - Forest County
Township 34 North	N: 522032.566 USFT
Range 13 East	E: 841682.597 USFT
Town of Nashville	Datum: NAD 83 (2011)
County of Forest	GNSS Method: WISCORS VRS Direct Observation

Original Corner Information:

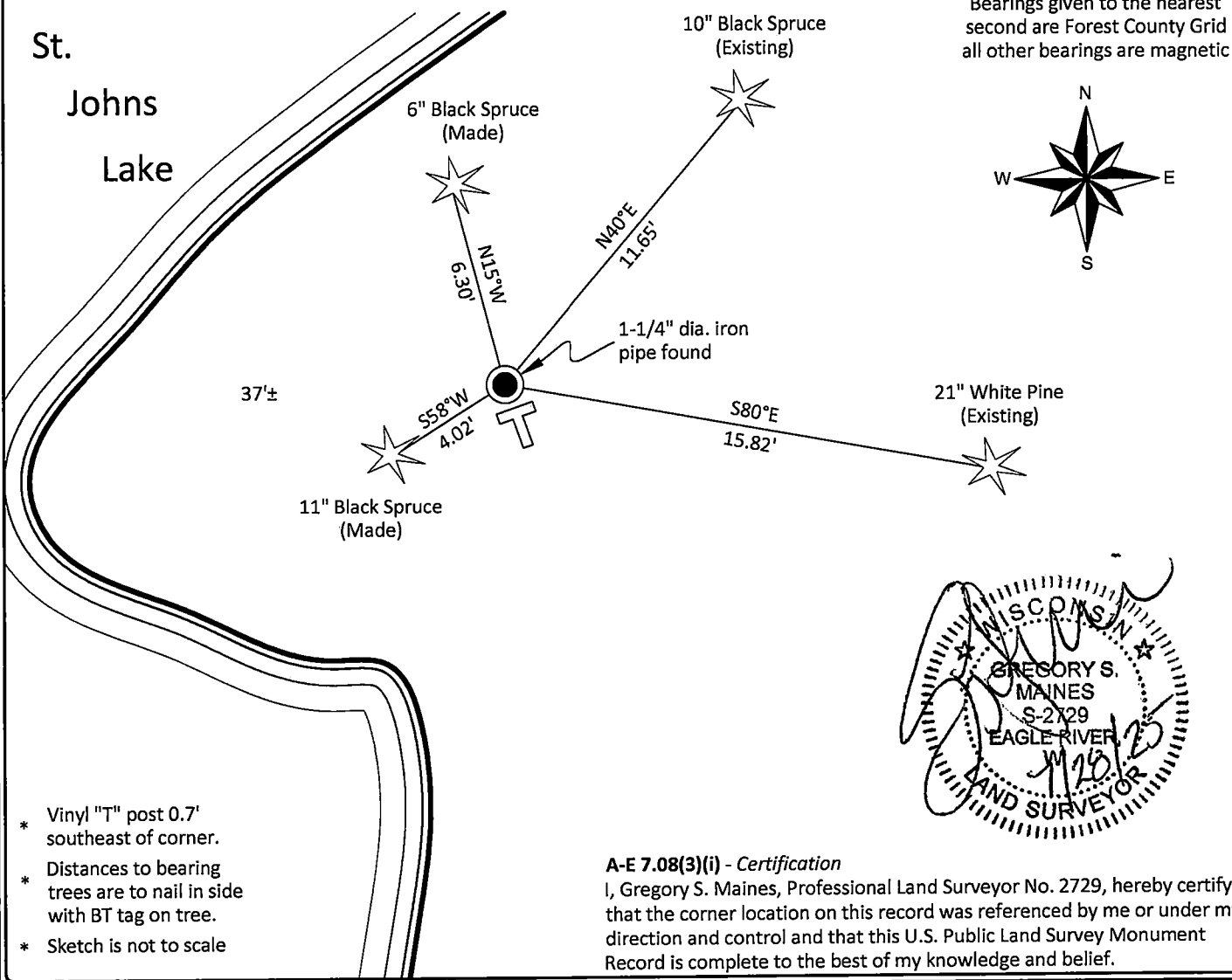
Original Surveyor: J.L. Nowlin	Original B.T.'s: Spruce 6" - S36°E, 10 links
Date of Survey: October 1865	Spruce 5" - N10°E, 6 links

A-E 7.08(3)(b)(e)(f)(g) Describe any record evidence, monument evidence, occupational evidence, testimonial evidence or any other material evidence considered. Describe any discrepancy between the corner restored and any previously established location. State whether the corners was restored through acceptance of obliterated evidence, a found perpetuated location, or determined by proportionate methods.

11/23/1983 Certified Land Corner Restoration by Glen Barker indicates he set a 1" dia. iron pipe on line between the southwest corner of Section 9 and the south quarter corner of Section 9 and made two new bearing trees. (See corner form for prior history and additional information).

04/04/2025 I found and accepted a 1-1/4" dia. iron pipe 12" above grade and both of Baker's bearing trees. I made two additional bearing trees to witness the corner as shown below.

A-E 7.08(3)(c)(d)(e)(h) Plan view of corner with ties to at least four witnesses. If in disagreement with previously established corner, show the distances between the two corners and also indicate the tie to the disputed corner. Distances and directions to other PLSS used as evidence or for proportioning.



43413090037

Stock No. 26272
FORM 985
H.C. Miller Company
Madison, Wisconsin

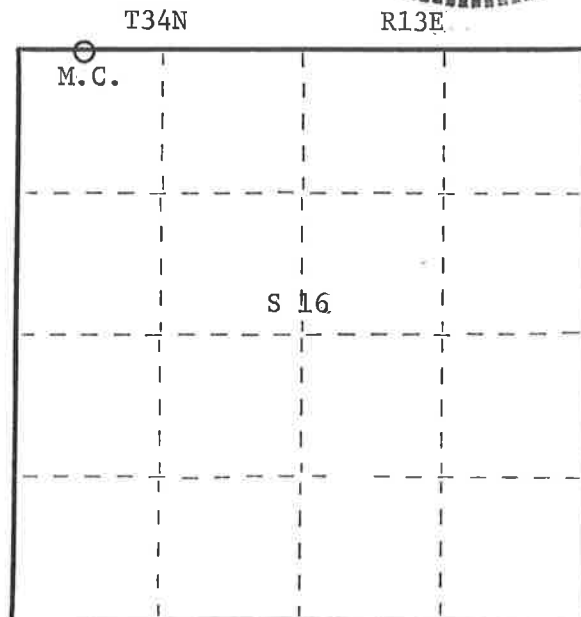
State of Wisconsin }
County of Forest } ss.

I, Glen Barker, do hereby
certify that on the 21st day
of September, 19 83, I found
evidence of the East M.C.
corner of Sections 9 & 16 St Johns Lake
Township 34, North, Range
13 East, Fourth Principal Meridian,
as described hereon; and that from this evidence
I established a new monument and accessories
as described hereon to perpetuate the original
location of this corner.

Resident witnesses:

J. Claflin - RLS

H. Wagoner



○ = Corner monument restored.

CERTIFIED LAND CORNER RESTORATION

Index No. J-912

9 9/2

History of original corner establishment:
No evidence of any previous corner.

Description of corner evidence found:

Set east meander corner on east shore of St. Johns Lake 20.0 ft. of waters edge -
on a straight line between Section corner 8-9-16-17 and 1/4 corner between Sections
9 & 16. Corner sets 790.0 ft. of Section corner and 1785.48 ft. of 1/4 corner.

Description of monument and accessories I established to perpetuate the original location of this corner.

Set a 1" x 48" iron pipe for M.C.

Marked NBTs

Black spruce 6" N40E 11.71 ft.

White pine 6" S80E 16.10 ft.

Scribed M.C. - B.T.

Dated at Rhineland, Wis., this 23rd day of November, 19 83.

Signature Glen Barker Title Registered Land Surveyor Registration No. S1682
(County Surveyor, Registered Land Surveyor, or other duly authorized official)

Office of Register of Deeds, County of Forest, I hereby certify that the within
instrument was filed in this office for record on the 13th day of December, 19 83
at 10:30 o'clock A. M.

Eugene Staszny
(Register of Deeds)
By _____ Deputy

DOCUMENT NO. **124852**

43413090037