

U.S. PUBLIC LAND SURVEY MONUMENT RECORD

This form is intended and designed to fulfill all requirements of Wisconsin Administrative Code, Chapter A-E 7.08 U.S. Public Land Survey Monument Record (3) (a)(b)(c)(d)(e)(f)(g)(h)(i).

The coordinate value shown has been verified by at least one of the following methods: 1) Comparison to a previously GNSS determined published value; 2) The value is the average of two or more GNSS observations at a markedly different time; 3) One or more distances were measured back to the GNSS observed corner from temporary GNSS observed offset locations.

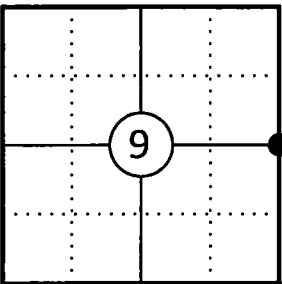
A-E 7.08(3)(a) Identity of the corner:

|                        |  |
|------------------------|--|
| E 1/4 Corner Section 9 | WISCRS - Forest County                     |
| Township 34 North      | N: 524547.532 USFT                         |
| Range 13 East          | E: 846268.138 USFT                         |
| Town of Nashville      | Datum: NAD 83 (2011)                       |
| County of Forest       | GNSS Method: WISCRS VRS Direct Observation |

Original Corner Information:

|                                |   |
|--------------------------------|---|
| Original Surveyor: J.L. Nowlin | Original B.T.'s: Birch 14" - N36°W, 6 links |
| Date of Survey: October 1865   | Hemlock 12" - S65°E, 15 links               |

Corner ID: 43413092000



A-E 7.08(3)(b)(e)(f)(g) Describe any record evidence, monument evidence, occupational evidence, testimonial evidence or any other material evidence considered. Describe any discrepancy between the corner restored and any previously established location. State whether the corners was restored through acceptance of obliterated evidence, a found perpetuated location, or determined by proportionate methods.

11/15/1963 Restoration of Lost Original Government Survey Corner by Neal Sperhake indicates he set a 1" dia. iron pipe with a Kimberly Clark Corp aluminum cap by proportionate measurement and made two new bearing trees. (See corner form for prior history and additional information).

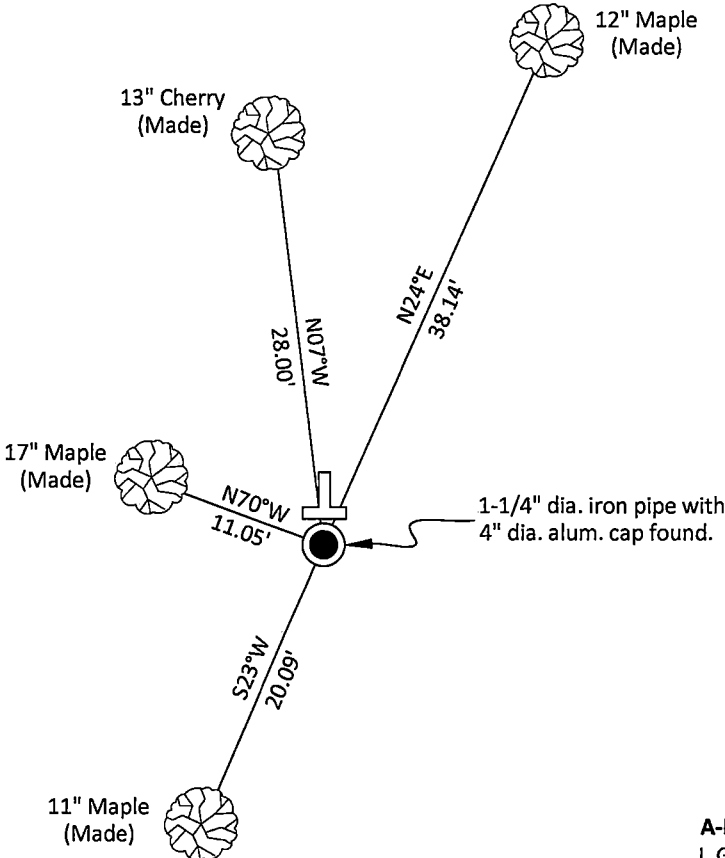
11/17/1997 Michael E. Weber, Forest Co Surveyor File # 341309-19971117 found an aluminum capped monument.

12/03/2002 Michael A Trembl, Forest Co Surveyor File # 341310-20021203 found a 1" dia. iron pipe with 4" alloy cap.

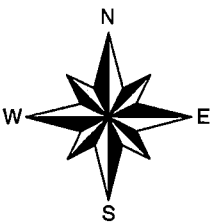
06/29/2004 Matthew E. Hoglund, Forest Co Surveyor File # 341309-20040629 found a 1" iron pipe with 4" cap.

04/07/2025 I found and accepted a 1-1/4" dia. iron pipe with a Kimberly Clark Corp 4" dia. aluminum cap stamped to identify the corner 8" above grade and no bearing trees. The corner fits well with surveys of record. I made four bearing trees and witnessed the corner as shown below.

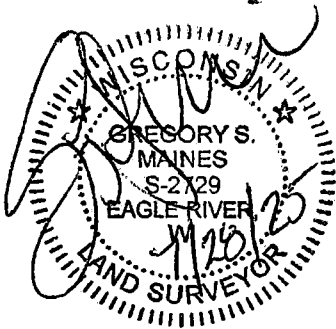
A-E 7.08(3)(c)(d)(e)(h) Plan view of corner with ties to at least four witnesses. If in disagreement with previously established corner, show the distances between the two corners and also indicate the tie to the disputed corner. Distances and directions to other PLSS used as evidence or for proportioning.



Bearings given to the nearest second are Forest County Grid all other bearings are magnetic



- \* Vinyl "T" post 0.5' north of corner.
- \* Distances to bearing trees are to nail in side with BT tag on tree.
- \* Sketch is not to scale



A-E 7.08(3)(i) - Certification

I, Gregory S. Maines, Professional Land Surveyor No. 2729, hereby certify that the corner location on this record was referenced by me or under my direction and control and that this U.S. Public Land Survey Monument Record is complete to the best of my knowledge and belief.

State of Wisconsin }  
County of FOREST } ss. RESTORATION OF LOST ORIGINAL GOVERNMENT SURVEY CORNER.

I NEAL SPERHAKE, do hereby certify that on the FIFTEENTH day of NOVEMBER, 19 63, I established the WEST QUARTER SECTION CORNER OF SECTION 10, TOWNSHIP 34 NORTH, RANGE 13 EAST, Fourth Principal Meridian, as described hereon.

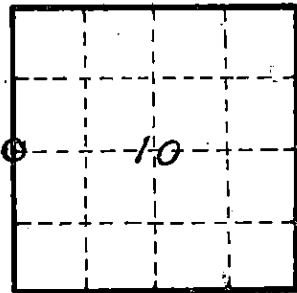
History: This corner was established during the original survey of this township, as noted in the original field notes for the original survey of T34N-R13E, 4th. p.m.

Description of monument and accessories I established to perpetuate the location of this corner:

At the point determined for the location of the corner I emplaced a:  
GALVANIZED IRON PIPE, THREE FEET LONG, ONE INCH IN DIAMETER, WITH ALUMINUM CAP DENOTED AS, "KIMBERLY-CLARK CORP. T34N 1/4 BTWN. 9 & 10 R13E SPERHAKE RLS 463 11/15/63."

The pipe is witnessed by:  
Basswood 4 N 84°W 29 links. (SCRIBED 1/4 S 9 NBT).  
Basswood 6 N 78°E 15 links. (SCRIBED 1/4 S 10 NBT).

Description as to how corner was located: No evidence of original corner present. Thus, set by proportionate measurement. The section corners 1/2 mile north and south have been previously established with a distance of 75.69 chains between them. Thus, set the quarter corner 37.84 1/2 chains from either corner and on a straight line between them.



0 = Corner monument restored

Subscribed & sworn to before me this 25 day of Aug 1964  
Anna Peterson  
NOTARY PUBLIC, FOREST CO., WIS  
COM. EXPIRES 10/31/65

Resident witnesses \_\_\_\_\_  
Dated at Crandon, Wisconsin, this 25 day of Aug, 1964.  
Signature Neal Sperhake  
Title Registered Land Surveyor Registration No. 463  
Office of Reg of Deeds County of Forest  
I hereby certify that the within instrument was filed in this office for record on the 25 day of Aug 19 64, and was filed in Book No. \_\_\_\_\_ Page No. \_\_\_\_\_ of County Records.

Surveyor's Seal

Signature Anna Peterson Title Reg. of Deeds

4341309 2444

88967  
Index No. 6-13