

U.S. PUBLIC LAND SURVEY MONUMENT RECORD

This form is intended and designed to fulfill all requirements of Wisconsin Administrative Code, Chapter A-E 7.08 U.S. Public Land Survey Monument Record (3) (a)(b)(c)(d)(e)(f)(g)(h)(i).

The coordinate value shown has been verified by at least one of the following methods: 1) Comparison to a previously GNSS determined published value; 2) The value is the average of two or more GNSS observations at a markedly different time; 3) One or more distances were measured back to the GNSS observed corner from temporary GNSS observed offset locations.

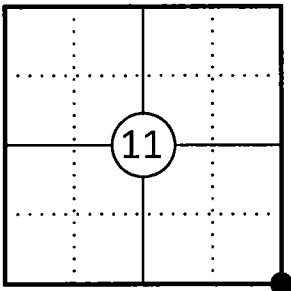
A-E 7.08(3)(a) Identity of the corner:

SE Corner Section 11	WISCRS - Forest County
Township 34 North	N: 521762.473 USFT
Range 13 East	E: 856901.096 USFT
Town of Nashville	Datum: NAD 83 (2011)
County of Forest	GNSS Method: WISCORS VRS Direct Observation

Original Corner Information:

Original Surveyor: J.L. Nowlin	Original B.T.'s: Hemlock 12" - N55°E, 30 links
Date of Survey: October 1865	Y Pine 20" - N24°W, 4 links

Corner ID: 43413110000

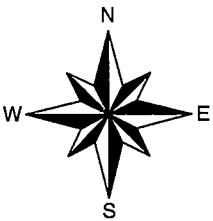
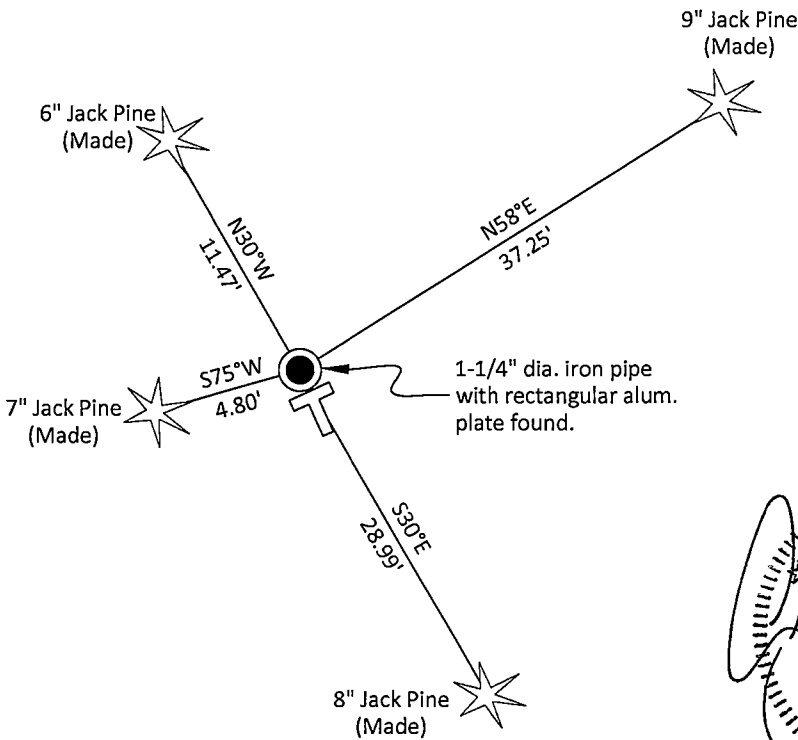


A-E 7.08(3)(b)(e)(f)(g) Describe any record evidence, monument evidence, occupational evidence, testimonial evidence or any other material evidence considered. Describe any discrepancy between the corner restored and any previously established location. State whether the corners was restored through acceptance of obliterated evidence, a found perpetuated location, or determined by proportionate methods.

- 11/01/1963 Restoration of Lost Original Government Survey Corner by Neal Sperhake indicates he set a 1" dia. iron pipe with a Kimberly Clark Corp aluminum cap and made two new bearing trees. (See corner form for prior history and additional information).
- 2008-2009 Tim Rusch with Rusch Engineering and Surveying indicates a found aluminum capped monument on his survey in Section 12. Partial Map filed under Forest Co. File # 341312.
- 03/11/2025 I found and accepted a 1-1/4" dia. iron pipe with a 1" x 2" rectangular aluminum plate on top at the corner location and no bearing trees. The plate is stamped 11, 12, 13, 14. This monument matches Rusch Engineering location. I made four new bearing trees to witness the corner as shown below.

A-E 7.08(3)(c)(d)(e)(h) Plan view of corner with ties to at least four witnesses. If in disagreement with previously established corner, show the distances between the two corners and also indicate the tie to the disputed corner. Distances and directions to other PLSS used as evidence or for proportioning.

Bearings given to the nearest second are Forest County Grid. All other bearings are magnetic



- * Vinyl "T" post 1.7' southeast of corner.
- * Distances to bearing trees are to nail in side with BT tag on tree.
- * Sketch is not to scale



A-E 7.08(3)(i) - Certification

I, Gregory S. Maines, Professional Land Surveyor No. 2729, hereby certify that the corner location on this record was referenced by me or under my direction and control and that this U.S. Public Land Survey Monument Record is complete to the best of my knowledge and belief.

State of Wisconsin
County of FOREST

ss. RESTORATION OF LOST ORIGINAL GOVERNMENT SURVEY CORNER.

I NEAL SPERHAKE, do hereby certify that on the FIRST day of NOVEMBER, 19 63, I established the NORTHWEST SECTION CORNER OF SECTION 13, TOWNSHIP 34 NORTH, RANGE 13 EAST, Fourth Principal Meridian, as described hereon.

History: This corner was established during the original survey of this township, as noted in the original field notes for the original survey of T34N-R13E, 4th. p.m.

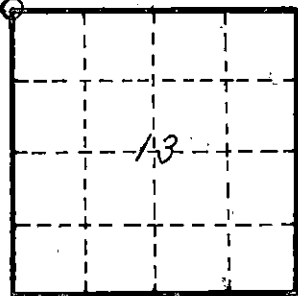
Description of monument and accessories I established to perpetuate the location of this corner:
At the point determined for the location of the corner I emplaced a:

GALVANIZED IRON PIPE, THREE FEET LONG, ONE INCH IN DIAMETER, WITH ALUMINUM CAP DENOTED AS, "KIMBERLY-CLARK CORP. T34N 11, 12, 13, 14 R13E SPERHAKE RLS 463 11/1/63."

The pipe is witnessed by:

W. Pine 13 S 61°W 449 links. (SCRIBED S14 NBT).
Telegraph pole N 66°W 146 links. (SCRIBED S11).

Description as to how corner was located: No evidence of original corner present. Therefore, planned to set by double proportionate measurement. For the north-south position: The section corner one mile north and the quarter section corner one half mile south have been previously established with a distance between them of 117.91 chains. Proportionately, therefore, the north-south position of 11, 12, 13, 14, would be 39.30 1/3 chains north of the quarter section corner between 13 and 14, and 78.60 2/3 chains south of the corner of 1, 2, 11, 12. For the east-west position; The section corners one mile east and one mile west have been previously established with a distance between them of 155.46 chains. The record distance was 159.50 chains. The record length of the line between 12 and 13 was 79.50 chains. Thus, the actual length should be 77.49 chains. According to the survey map of the Soo Line Railroad the corner of 11, 12, 13, 14, should be 121 feet east of the center line of the railroad. If it is so emplaced the actual distance from 11, 12, 13, 14, to the range line corner of 12 and 13 would be 77.43 chains. As this difference of 6 links is so negligible, I have accepted the survey map of the railroad, since it was made prior to 1900, most likely at a time when the original evidence of the corner was still present. Thus, the corner of 11, 12, 13, 14, has been set 39.30 1/3 chains north of the quarter section corner between 13 and 14, and 77.43 chains west of the range line corner of 12 and 13.



O = Corner monument restored

Subscribed & sworn to before me this 25 day of Aug 1965 Anna Peterson
NOTARY PUBLIC, FOREST CO., WIS
COM. EXPIRES 10/31/65

Resident witnesses _____

Dated at Crandon, Wisconsin, this 25 day of Aug, 19 64.

Signature Neal Sperhake

Title Registered Land Surveyor Registration No. 463

Office of Reg. of Deeds County of Forest

I hereby certify that the within instrument was filed in this office for record on the 25 day of Aug 19 64, and was filed in Book No. _____ Page No. _____ of County Records.

Surveyor's Seal

Signature Anna Peterson Title Reg. of Deeds

43413110000

88935

Index No:

7-21
221