

U.S. PUBLIC LAND SURVEY MONUMENT RECORD

This form is intended and designed to fulfill all requirements of Wisconsin Administrative Code, Chapter A-E 7.08 U.S. Public Land Survey Monument Record (3) (a)(b)(c)(d)(e)(f)(g)(h)(i).

The coordinate value shown has been verified by at least one of the following methods: 1) Comparison to a previously GNSS determined published value; 2) The value is the average of two or more GNSS observations at a markedly different time; 3) One or more distances were measured back to the GNSS observed corner from temporary GNSS observed offset locations.

A-E 7.08(3)(a) Identity of the corner:

SE Corner Section 12
Township 34 North
Range 13 East
Town of Nashville
County of Forest

WISCRS - Forest County
N: 521678.653 USFT
E: 862003.606 USFT
Datum: NAD 83 (2011)
GNSS Method: WISCORS VRS Direct Observation

Original Corner Information:

Original Surveyor: Alfred Millard
Date of Survey: August 1857

Original B.T.'s: Elm 12" - N75°W, 27 links
Hemlock 14" - S33°W, 19 links
Hemlock 14" - S62°E, 19 links
Hemlock 12" - N15°E, 74 links

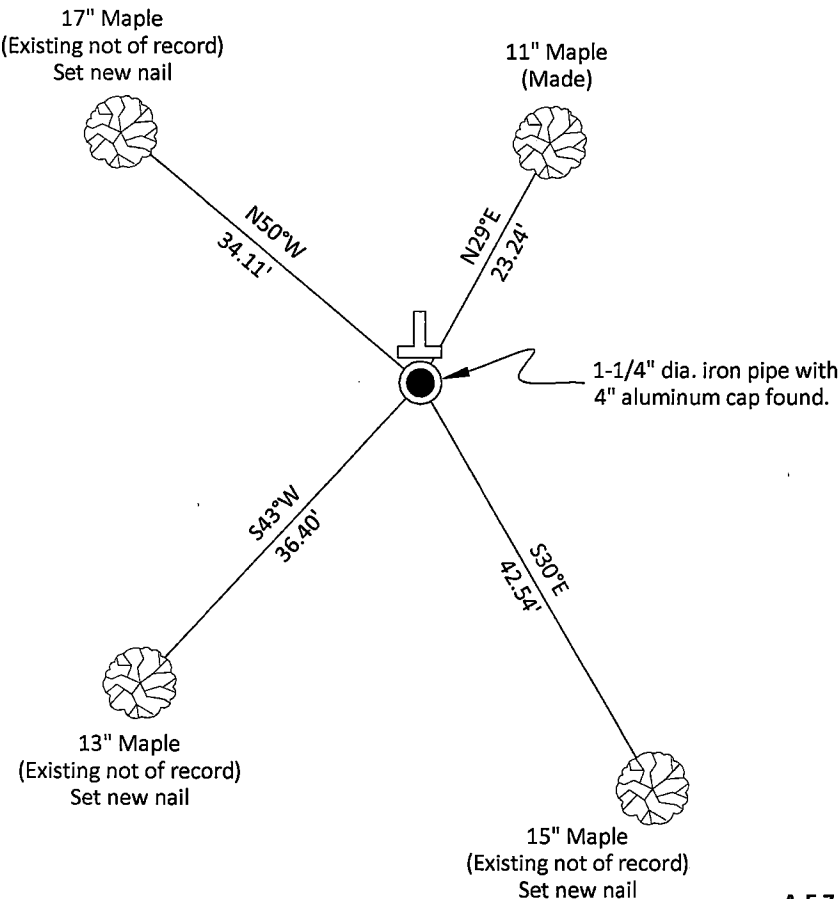
A-E 7.08(3)(b)(e)(f)(g) Describe any record evidence, monument evidence, occupational evidence, testimonial evidence or any other material evidence considered. Describe any discrepancy between the corner restored and any previously established location. State whether the corners was restored through acceptance of obliterated evidence, a found perpetuated location, or determined by proportionate methods.

02/11/1963 Certified Land Corner Restoration by Neal Sperhake indicates he set a 1" dia. iron pipe with a Kimberly Clark Corp aluminum cap from original bearing tree and made four new bearing trees. (See corner form for prior history and additional information).

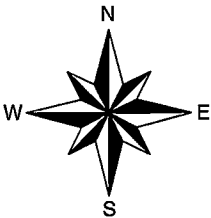
1988 Alan D. Harrison, Forest Co Surveyor File # 341407-19980000 found Kimberly Clark monument.

03/11/2025 I found and accepted a 1-1/4" dia. iron pipe with a Kimberly Clark Corp 4" dia. aluminum cap 6" above grade and three existing bearing trees. I made one additional bearing tree to witness the corner as shown below.

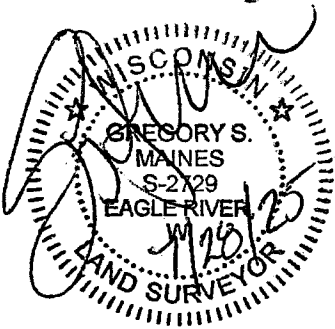
A-E 7.08(3)(c)(d)(e)(h) Plan view of corner with ties to at least four witnesses. If in disagreement with previously established corner, show the distances between the two corners and also indicate the tie to the disputed corner. Distances and directions to other PLSS used as evidence or for proportioning.



Bearings given to the nearest second are Forest County Grid
all other bearings are magnetic



- * Steel sign post 1.0' north of corner.
- * Distances to bearing trees are to nail in side with BT tag on tree.
- * Sketch is not to scale



A-E 7.08(3)(i) - Certification
I, Gregory S. Maines, Professional Land Surveyor No. 2729, hereby certify that the corner location on this record was referenced by me or under my direction and control and that this U.S. Public Land Survey Monument Record is complete to the best of my knowledge and belief.

247024

FILED ON:

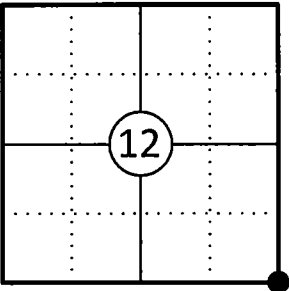
10/21/2025 09:59 AM

CORTNEY BRITTEN CLEEREMAN
REGISTER OF DEEDS

FOREST COUNTY WI

PAGES: 1

Corner ID: 43413120000



43413120000

Index No.: 795

State of Wisconsin }
County of FOREST } ss.

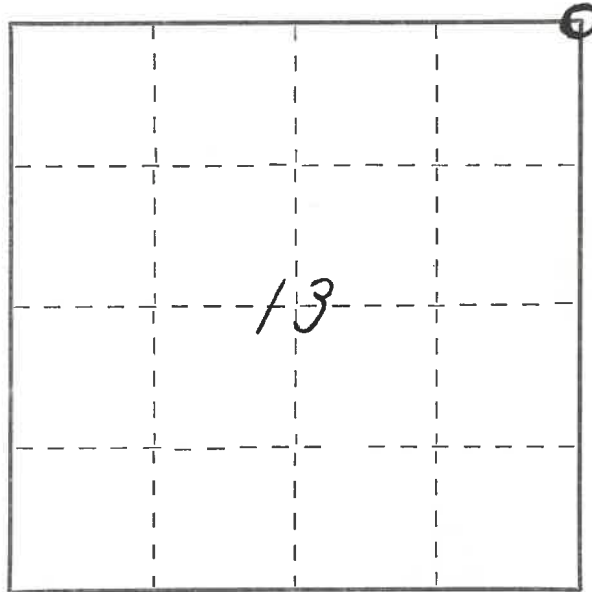
I NEAL SPERHAKE, do hereby
certify that on the FOURTEENTH day
of NOVEMBER, 1961, I found
evidence of the NORTHEAST SECTION
corner of SECTION 13
Township 34, North, Range
13 EAST, Fourth Principal Meridian,
as described hereon; and that from this evidence
I established a new monument and accessories
as described hereon to perpetuate the original
location of this corner.

Resident witnesses:

Les. Hillberg - Crandon

Richard Piontek - Waubesa

David Seaburg - Laona



○ = Corner monument restored.

CERTIFIED LAND CORNER RESTORATION

History of original corner establishment:

This corner can also be described as: THE SECTION CORNER COMMON TO SECTIONS 12
AND 13, T34N-R13E, AND SECTIONS 7 AND 18,
T34N-R14E, 4TH P.M.

This corner was established during the original survey of this township, as noted
in the Original Field Notes for the Original Survey of T34N-R13E, 4th P.M.

Description of corner evidence found:

The stump of the original bearing tree, described in the original field notes as,

"Hemlock 14 S62E 19 links"

is still present at this date, with a portion of the original scribe marks still
visible.

Description of monument and accessories I established to perpetuate the original location of this corner.

At the site of the original post, as determined from the existing original bearing
tree noted above, I emplaced a "GALVANIZED IRON PIPE, THREE FEET LONG, ONE INCH
IN DIAMETER, WITH AN ALUMINUM CAP DENOTED AS, 'KIMBERLY-CLARK CORP T34N
12, 13, 7, 18, R13-14E SPERHAKE RLS 463 11-14-61".

The pipe is witnessed by:

Elm	8	N41°E	51	links.	(Scribed S 7 NBT).
Maple	4	S45°E	49	links.	(Scribed S18 NBT).
Elm	7	N58°W	52	links.	(Scribed S12 NBT).
Elm	7	S43°W	22	links.	(Scribed S13 NBT).

Dated at Crandon, Wis., this 11th day of Feb, 1963

Signature [Signature] Title Registered Land Surveyor Registration No. S-463
(County Surveyor, Registered Land Surveyor, or other duly authorized official)

Office of Register of Deeds, County of Forest, I hereby certify that the within
instrument was filed in this office for record on the 11th day of Feb, 1963
at 10 o'clock A M. 86839

Anna Peterson
(Register of Deeds)

SUBSCRIBED & SWORN TO BEFORE ME THIS 11th
DAY OF FEB 1963

Anna Peterson
Notary Public, Forest Co., Wis
Com. exp. 10/31/65

By _____ Deputy

Index

J-25
J 25

SEE ALSO
J1-T34-R/4

43413120000

Surveyors Seal