

U.S. PUBLIC LAND SURVEY MONUMENT RECORD

This form is intended and designed to fulfill all requirements of Wisconsin Administrative Code, Chapter A-E 7.08 U.S. Public Land Survey Monument Record (3) (a)(b)(c)(d)(e)(f)(g)(h)(i).

The coordinate value shown has been verified by at least one of the following methods: 1) Comparison to a previously GNSS determined published value; 2) The value is the average of two or more GNSS observations at a markedly different time; 3) One or more distances were measured back to the GNSS observed corner from temporary GNSS observed offset locations.

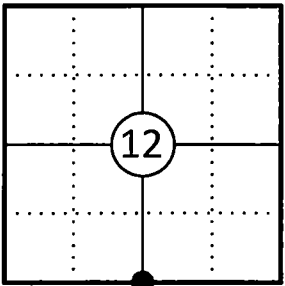
A-E 7.08(3)(a) Identity of the corner:

| | |
|-------------------------|--|
| S 1/4 Corner Section 12 | WISCRS - Forest County |
| Township 34 North | N: 521719.694 USFT |
| Range 13 East | E: 859452.213 USFT |
| Town of Nashville | Datum: NAD 83 (2011) |
| County of Forest | GNSS Method: WISCRS VRS Direct Observation |

Original Corner Information:

| | |
|--------------------------------|--|
| Original Surveyor: J.L. Nowlin | Original B.T.'s: Hemlock 12" - S23°W, 18 links |
| Date of Survey: October 1865 | Ironwood 6" - N03°W, 25 links |

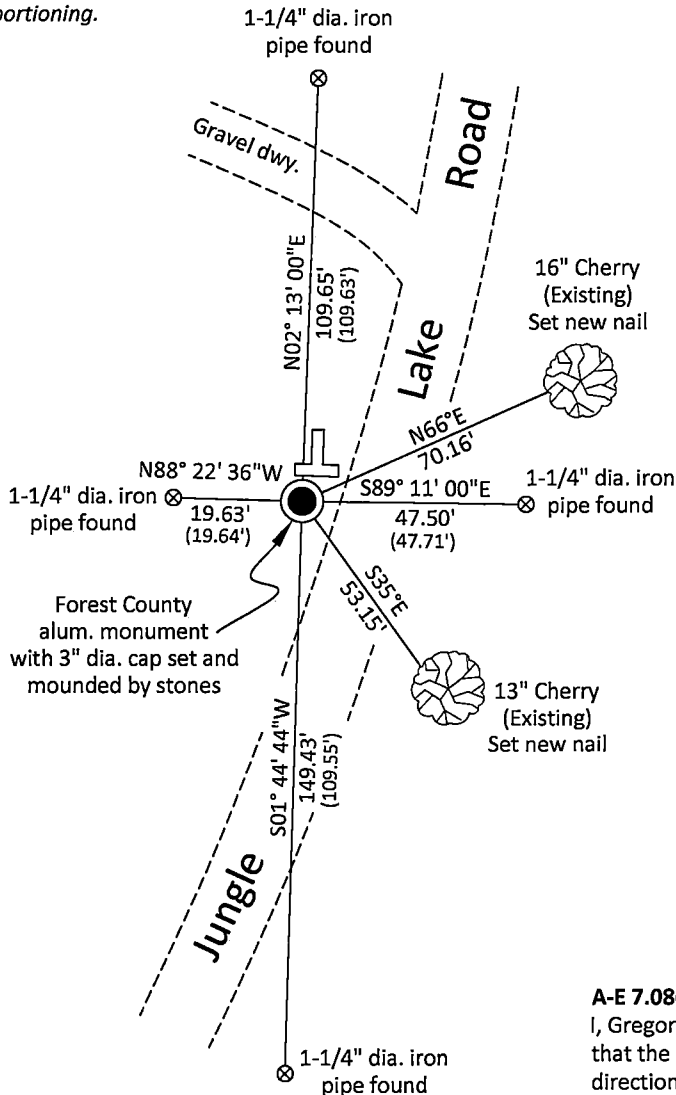
Corner ID: 43413120020



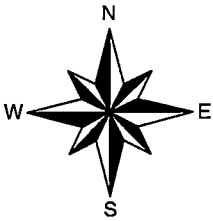
A-E 7.08(3)(b)(e)(f)(g) Describe any record evidence, monument evidence, occupational evidence, testimonial evidence or any other material evidence considered. Describe any discrepancy between the corner restored and any previously established location. State whether the corners was restored through acceptance of obliterated evidence, a found perpetuated location, or determined by proportionate methods.

- 11/01/1963 Restoration of Lost Original Government Survey Corner by Neal Sperhake indicates he set a 1" dia. iron pipe with a Kimberly Clark Corp aluminum cap by single proportion and made two new bearing trees. (See corner form for prior history and additional information).
- 2008-2009 Tim Rusch with Rusch Engineering and Surveying indicates a found iron pipe on his survey in Section 12. Partial Map filed under Forest Co. File # 341312.
- 10/27/2025 I found a 1-1/4" dia. iron pipe tipped at the corner location along with both existing bearing trees from Sperhake. We also tied four existing iron pipes set by Rusch as shown on his survey. Using Rusch's survey information we reset a Forest County aluminum monument with a 3" dia. cap stamped to identify the corner 8" above grade and mounded by stones. We used the existing bearing trees and the four iron pipes to witness the corner as shown below.

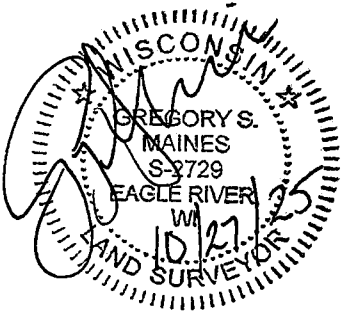
A-E 7.08(3)(c)(d)(e)(h) Plan view of corner with ties to at least four witnesses. If in disagreement with previously established corner, show the distances between the two corners and also indicate the tie to the disputed corner. Distances and directions to other PLSS used as evidence or for proportioning.



Bearings given to the nearest second are Forest County Grid. All other bearings are magnetic.



- * Vinyl "T" post 1.8' north of corner.
- * Distances to bearing trees are to nail in side with BT tag on tree.
- * Sketch is not to scale



A-E 7.08(3)(i) - Certification

I, Gregory S. Maines, Professional Land Surveyor No. 2729, hereby certify that the corner location on this record was referenced by me or under my direction and control and that this U.S. Public Land Survey Monument Record is complete to the best of my knowledge and belief.

43413120020

State of Wisconsin

County of FOREST

ss. RESTORATION OF LOST ORIGINAL GOVERNMENT SURVEY CORNER.

I NEAL SPERHAKE, do hereby certify that on the FIRST day of NOVEMBER, 19 63, I established the NORTH QUARTER SECTION CORNER OF SECTION 13, TOWNSHIP 34 NORTH, RANGE 13 EAST, Fourth Principal Meridian. as described hereon.

History: This corner was established during the original survey of this township, as noted in the original field notes for the original survey of T34N-R13E, 4th. p.m.

Description of monument and accessories I established to perpetuate the location of this corner:

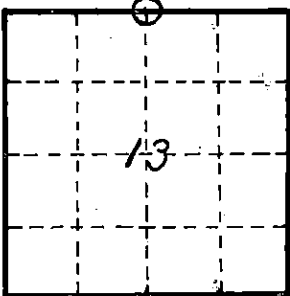
At the point determined for the location of the corner I emplaced a:

GALVANIZED IRON PIPE, THREE FEET LONG, ONE INCH IN DIAMETER, WITH ALUMINUM CAP DENOTED AS, "KIMBERLY-CLARK CORP. T34N $\frac{1}{4}$ BTWN. 12 & 13 R13E SPERHAKE RLS 463 11/1/63."

The pipe is witnessed by:

Cherry 6 N 45°E 104 $\frac{1}{2}$ links. (SCRIBED $\frac{1}{4}$ S 12 NBT).
Cherry 4 S 38°E 79 links. (SCRIBED $\frac{1}{4}$ S 13 NBT).

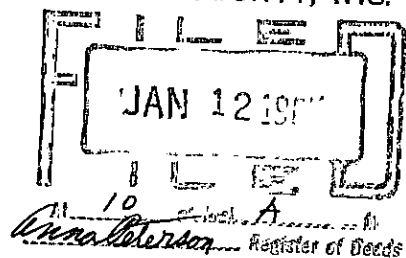
Description as to how corner was located: No evidence of original corner present. Thus, set by proportionate measurement. The section corners $\frac{1}{2}$ mile east and west have been previously established with a distance of 77.43 chains between them. Thus, set the quarter corner 38.71 $\frac{1}{2}$ chains from either corner and on a straight line between them.



0 = Corner monument restored

89572

REGISTERING OFFICE
FOREST COUNTY, WIS.



Resident witnesses _____

Dated at Grandon, Wisconsin, this 12 day of January, 1965.

Signature _____

Title Registered Land Surveyor Registration No. 463

~~Office of~~ County of signed & sworn to, I hereby certify that the within instrument was ~~FILED IN BOOK~~ FILED IN BOOK on the 12 day of Jan. 1965, and was filed in Book No. 43413120020 of County Records. Page No. 1

Surveyor's Seal

Signature Anna Peterson Title Notary Public

43413120020

Index No. J-23