

FILED ON:
11/11/2025 03:52 PM
CORTNEY BRITTEN CLEEREMAN
REGISTER OF DEEDS
FOREST COUNTY WI
PAGES: 1

U.S. PUBLIC LAND SURVEY MONUMENT RECORD

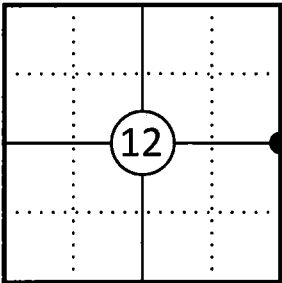
This form is intended and designed to fulfill all requirements of Wisconsin Administrative Code, Chapter A-E 7.08 U.S. Public Land Survey Monument Record (3) (a)(b)(c)(d)(e)(f)(g)(h)(i).

The coordinate value shown has been verified by at least one of the following methods: 1) Comparison to a previously GNSS determined published value; 2) The value is the average of two or more GNSS observations at a markedly different time; 3) One or more distances were measured back to the GNSS observed corner from temporary GNSS observed offset locations.

A-E 7.08(3)(a) Identity of the corner:

E 1/4 Corner Section 12	WISCORS - Forest County
Township 34 North	N: 524311.382 USFT
Range 13 East	E: 862121.892 USFT
Town of Nashville	Datum: NAD 83 (2011)
County of Forest	GNSS Method: WISCORS VRS Direct Observation

Corner ID: 43413122000



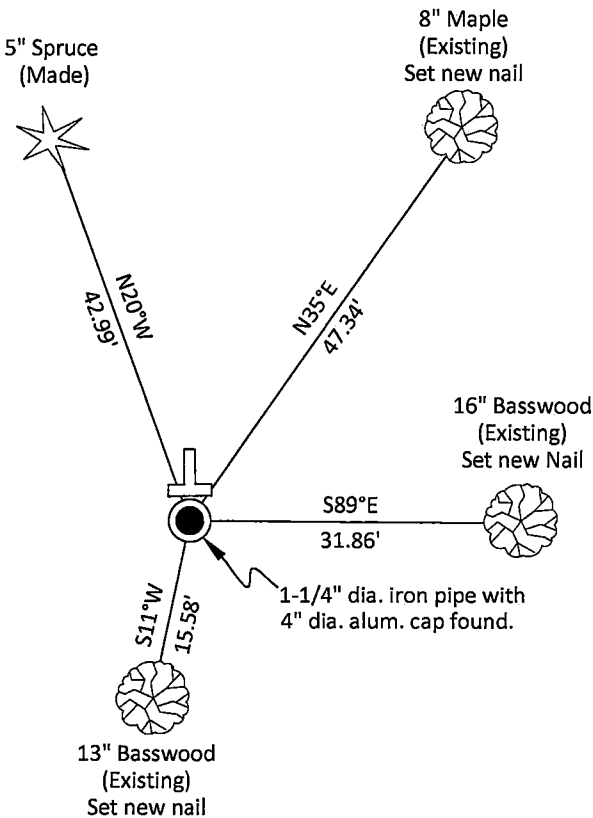
Original Corner Information:

Original Surveyor: Alfred Millard	Original B.T.'s: W Birch 12" - N50°W, 24 links
Date of Survey: August 1857	Sugar 18" - N78°E, 20 links

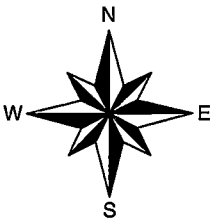
A-E 7.08(3)(b)(e)(f)(g) Describe any record evidence, monument evidence, occupational evidence, testimonial evidence or any other material evidence considered. Describe any discrepancy between the corner restored and any previously established location. State whether the corners was restored through acceptance of obliterated evidence, a found perpetuated location, or determined by proportionate methods.

- 02/11/1963 Certified Land Corner Restoration by Neal Sperhake indicates he set a 1" dia. iron pipe with a Kimberly Clark Corp aluminum cap in the center of the original Elm stump corner tree and made two new bearing trees. (See corner form for prior history and additional information).
- 03/27/1990 U.S. Public Land Survey Monument Record by Alan D. Harrison, indicates he found a Kimberly-Clark monument with a cap stamped to identify the corner and made one new bearing tree. (See corner form for prior history and additional information).
- 1988 Alan D. Harrison, Forest Co Surveyor File # 341407-19980000 found a Kimberly-Clark monument.
- 04/17/2015 Timothy J. Rusch, Forest Co Surveyor File # 341407-20150417 found an aluminum capped iron pipe.
- 10/07/2025 I found and accepted a 1-1/4" dia. iron pipe with a Kimberly Clark Corp 4" dia. aluminum cap stamped to identify the corner 18" above grade along with three existing bearing trees. I made one additional bearing tree to witness the corner as shown below.

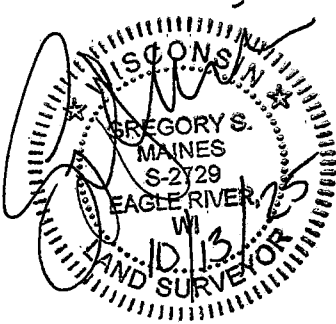
A-E 7.08(3)(c)(d)(e)(h) Plan view of corner with ties to at least four witnesses. If in disagreement with previously established corner, show the distances between the two corners and also indicate the tie to the disputed corner. Distances and directions to other PLSS used as evidence or for proportioning.



Bearings given to the nearest second are Forest County Grid. All other bearings are magnetic



- * Vinyl "T" post 1.0' north of corner.
- * Steel sign post 1.4' southwest of corner.
- * Distances to bearing trees are to nail in side with BT tag on tree.
- * Sketch is not to scale



A-E 7.08(3)(i) - Certification
I, Gregory S. Maines, Professional Land Surveyor No. 2729, hereby certify that the corner location on this record was referenced by me or under my direction and control and that this U.S. Public Land Survey Monument Record is complete to the best of my knowledge and belief.

Index No.: 425

43413122000

139365

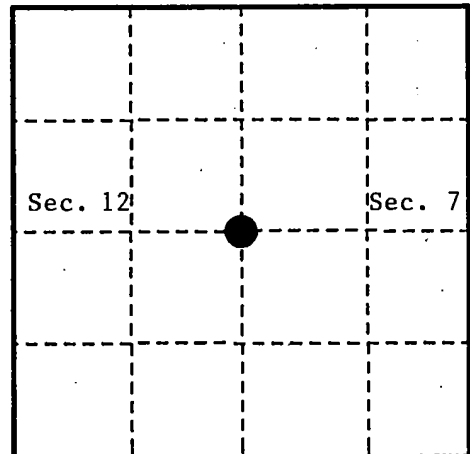
U. S. PUBLIC LAND SURVEY MONUMENT RECORD

INSTRUCTIONS:

This record shall show the location of the corner and shall include all of the following nine elements (a through i).

- (a) Identify the corner by reference to the U.S. public land survey system.
 O = Corner monument restored.

Quarter corner common to Sections 7 and 12,
 T.34N., R.13-14E., Forest County, Wisconsin



- (b) Describe any record evidence, monument evidence, occupational evidence, testimonial evidence or any other material evidence you considered, and whether the monument was found or placed.

In 1857, A. Millard made a 12" Elm the corner and made the following B.T.'s: W. Birch, 12", N.50°W., 24 links (15.84 feet); Sugar, 18", N.78°E., 20 links (13.20 feet).

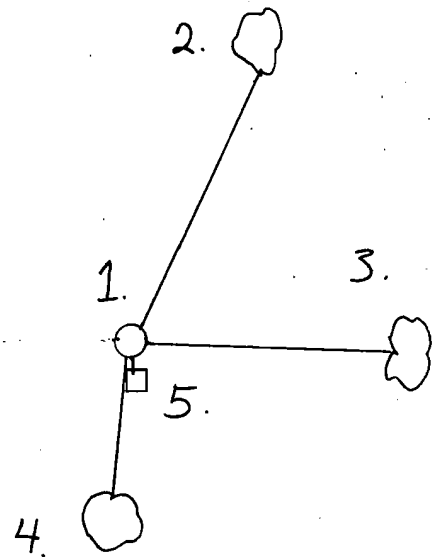
In 1961, N. Sperhake, R.L.S., found stump of original corner tree and set a K-C monument and made the following B.T.'s: Basswood, 4", S.07°W., 25 links (16.50 feet); Basswood, 9", N.08°E., 48 links (31.68 feet).

In 1988, A. Harrison found corner as per Sperhake with Northeast Basswood dead. Made new references.

- (c) In the plan view drawing below, provide reference ties to at least 4 witness monuments, or, if the location is within a municipality, to at least 2 witness monuments. (witness monuments shall be made of concrete, natural stone, iron or other equally durable material.)

- (d) Show a plan view drawing depicting the relevant monuments and reference ties which is sufficient in detail to enable accurate relocation of the corner monument if the corner monument is disturbed. Indicate north.

1. Kimberly-Clark monument with cap stamped to identify corner location.
2. Sugar, 4", N.35°E., 47.44 feet.
3. Basswood, 12", S.87°E., 31.80 feet.
4. Basswood, 8", S.07°W., 16.13 feet.
5. Steel sign post, South, 0.62 feet.



REGISTER'S OFFICE
 Forest County, Wis.

Received for record this 29th day
 of March A.D., 1990 at

10:00 o'clock A.M. and recorded

in Vol. CORNER RESTORATIONS

page 6-1

Paul Schenck
 Register of Deeds

(e) Describe any material discrepancy between the location of the corner as restored or reestablished and the location of that corner as previously restored or reestablished by distance and direction. Show the discrepancy on the plan view drawing under (d), above. Show the distances between the corner as previously restored or reestablished and (1) the corner as restored or reestablished, and (2) to at least 2 of the witness monuments shown on the drawing in (d), above.

None.

(f) Was the corner restored through acceptance of (1) an obliterated evidence location, or, (2) a found perpetuated location?

(2) a found perpetuated location

(g & h) Was the corner reestablished through lost corner proportionate methods? If so, show the method, including the directions and distances to other public land survey corners used as evidence or used for proportioning in determining the corner location?

No.

(1) I, Alan D. Harrison

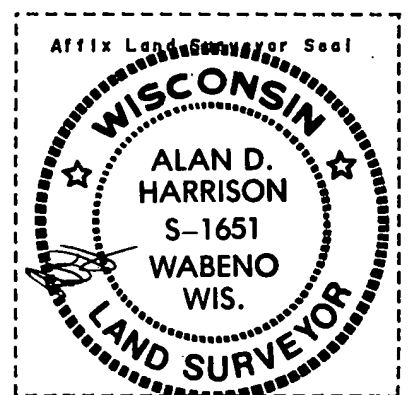
(type or print name) certify that the corner location shown on this record was determined by me or under my direction and control and that this U.S. Public Land Survey Monument Record is correct and complete to the best of my knowledge and belief.

Signature

Date

CERTIFICATE READY FOR FILING:

District Ranger



State of Wisconsin }
County of FOREST } ss.

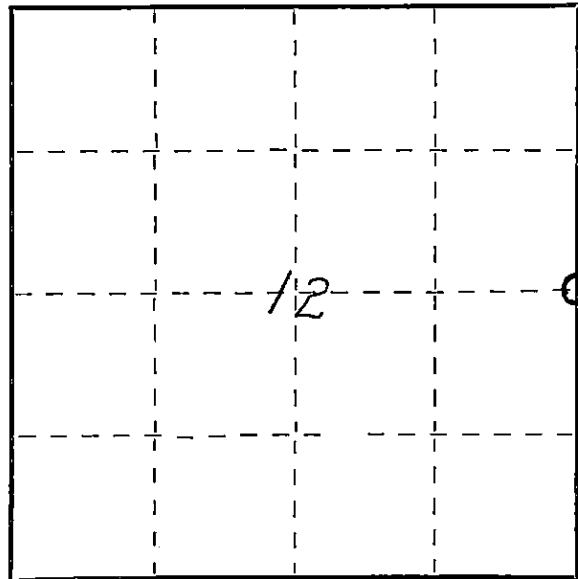
I NEAL SPERHAKE, do hereby
certify that on the FOURTEENTH day
of NOVEMBER, 19 61, I found
evidence of the EAST QUARTER SECTION
corner of SECTION 12
Township 34, North, Range
13 EAST, Fourth Principal Meridian,
as described hereon; and that from this evidence
I established a new monument and accessories
as described hereon to perpetuate the original
location of this corner.

Resident witnesses:

Les. Hillberg - Crandon

Richard Piontek - Waubesa

David Seaburg - Laona



○ = Corner monument restored.

CERTIFIED LAND CORNER RESTORATION

Index No. G-25
G 25

History of original corner establishment:

This corner can also be described as: THE QUARTER SECTION CORNER BETWEEN SECTION 7,
T34N-R14E, AND SECTION 12, T34N-R13E, 4TH P.M.

This corner was established during the original survey of this township, as noted
in the Original Field Notes for the Original Survey of T34N-R13E, 4th P.M.

Description of corner evidence found:

The stump of the original corner tree, described in the original field notes as,

"Elm 12, squared for corner"

is still present at this date.

In addition, since both section corners one half mile north and south, respectively,
have been previously established, a survey line was run between them. The elm stump
was located at the mid-point between the two section corners, and on a straight line
between them.

Description of monument and accessories I established to perpetuate the original location of this corner.

Into the center of the above mentioned stump was driven a "GALVANIZED IRON PIPE, THREE
FEET LONG, ONE INCH IN DIAMETER, WITH AN ALUMINUM CAP DENOTED AS, 'KIMBERLY-CLARK
CORP T34N 1/4 BTWN 7 & 12 R13-14E SPERHAKE RLS 463 11-14-61".

The pipe is witnessed by:

Basswood 4 S7°W 25 links. (Scribed S12 NBT).

Basswood 9 N8°E 48 links. (Scribed S 7 NBT).

Dated at Crandon, Wis. this 11th day of Feb., 19 63

Signature Neal Sperhake Title Registered Land Surveyor Registration No. S-463
(County Surveyor, Registered Land Surveyor, or other duly authorized official)

Office of Register of Deeds, County of Forest, I hereby certify that the within
instrument was filed in this office for record on the 11th day of Feb., 19 63
at 10 o'clock A. M. **86838**

Anna Peterson
(Register of Deeds)

SUBSCRIBED & SWORN TO BEFORE ME THIS
11TH DAY OF FEB 1963
Anna Peterson
Notary Public, Forest Co., Wis
Comm. exp. 10/31/65

By _____ Deputy

Surveyors Seal

43413122000

SEE ALSO
G-1 34-H