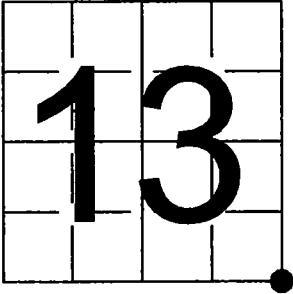


U. S. PUBLIC LAND SURVEY MONUMENT RECORD

NOTE: This form is intended and designed to fulfill all requirements of Wisconsin Administrative Code, Chapter A-E 7.08 U.S. Public Land Survey Monument Record (3) (a-i)

A-E 7.08(3)(a) Identity of corner:
Southeast Corner Section 13,
Township 34 North, Range 13 East
of the Fourth Principal Meridian,
Town of Nashville, Forest County,
Wisconsin

WISCRS - FOREST COUNTY
N: 516,390.683 USft (XXX,XXX.XXX)
E: 861,784.011 USft (XXX,XXX.XXX)
Datum: NAD83 (2011)
GNSS Method RTK
GNSS Control WISCORS VRS



The coordinate value shown has been verified by the average of two or more GPS observations at a markedly different time. Coordinates shown in parenthesis are previously published values.

A-E 7.08(3)(b)

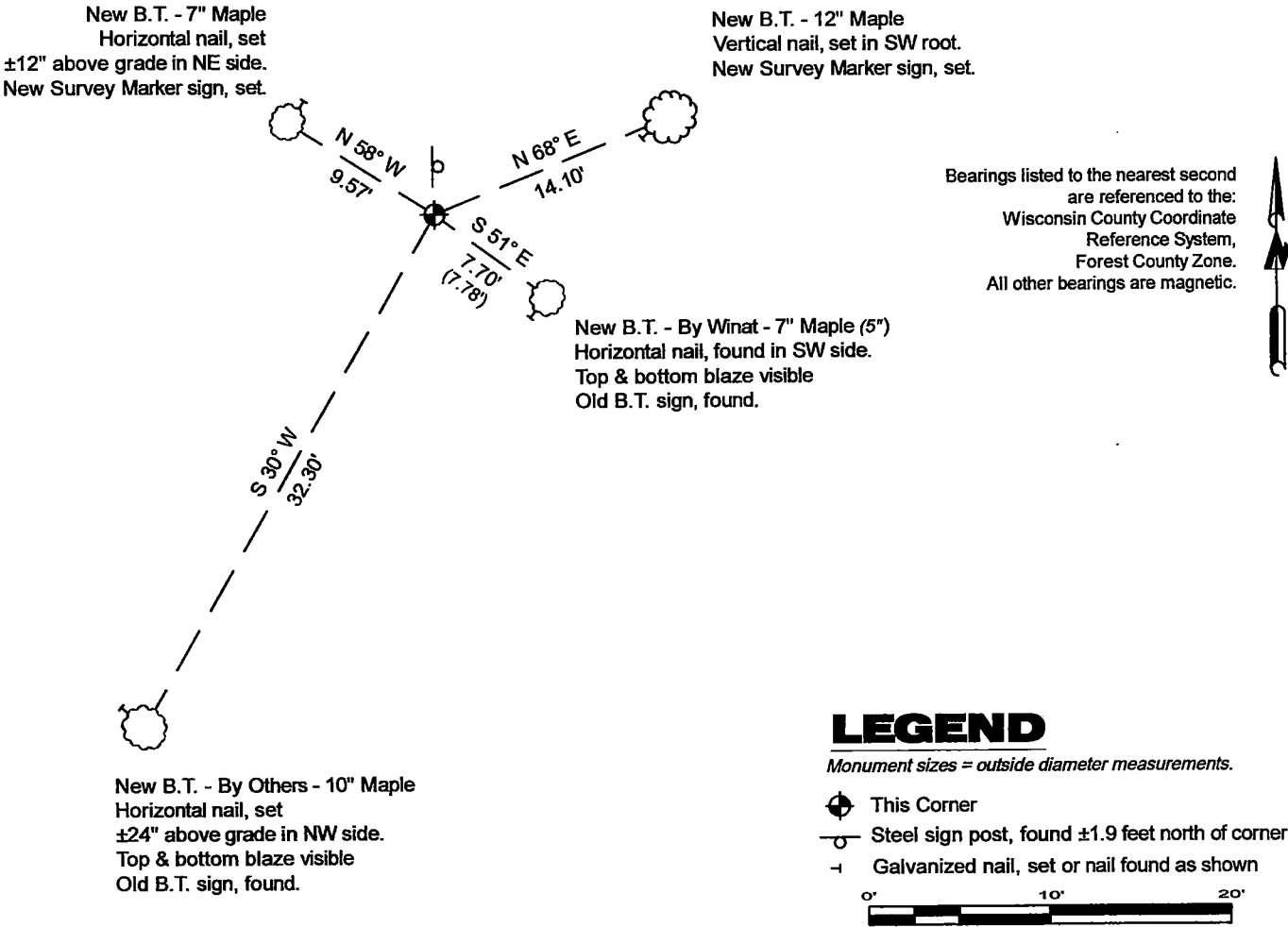
Original Surveyor: Alfred Millard - August 1857
Sugar 10 - N 60° W, 7 Links, Ironwood 10 - S 74° W, 43 Links, Hemlock 10 - S 40° E, 27 Links, Lynn 12 - N 14° E, 53 Links

See previous Certified Land Corner Restoration - N-25 - February 11, 1963 - Surveyor 463 - Neal Sperhake - THENCE:

- 1982-1984 - Surveyor 1558 - Milo E. Stefan - indicates this position as "1" iron pipe with 4" Kimberly Clark cap" on county record Map #341419-19841228.

September 17, 2024 - I found a 1.3" diameter galvanized iron pipe monument with a 4" diameter aluminum cap stamped to identify the corner location . The monument extends ±14" above grade. I established 4 new reference monuments as shown below.

A-E 7.08(3)(c)(d) Plan view of corner with references to at least 4 witness monuments.



A-E 7.08(3)(e) 1857 Surveyor set a post, 1963 Surveyor set a 1" diameter galvanized iron pipe with an aluminum Kimberly - Clark cap, 1980's Surveyor found the same. I found 1.3" diameter galvanized iron pipe monument with a 4" diameter aluminum cap stamped to identify the corner location in 2024.

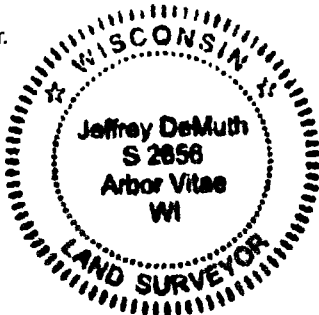
A-E 7.08(3)(f) I accept this monument in good faith as a FOUND PERPETUATED LOCATION of the corner.
A-E 7.08(3)(g)(h) This corner was not determined through lost-corner-proportionate methods.

A-E 7.08(3)(i) I, Jeffrey L. DeMuth, Professional Land Surveyor No. S-2656, hereby certify that the corner location on this record was determined by me or under my direction and control, and that this U.S. Public Land Survey Monument Record is correct and complete to the best of my knowledge, and belief.

SIGNATURE

December 27, 2024

DATE



43413130000

43413130000

N25

FORM 985 H. C. MILLER CO., MILWAUKEE

State of Wisconsin }
County of FOREST } ss.

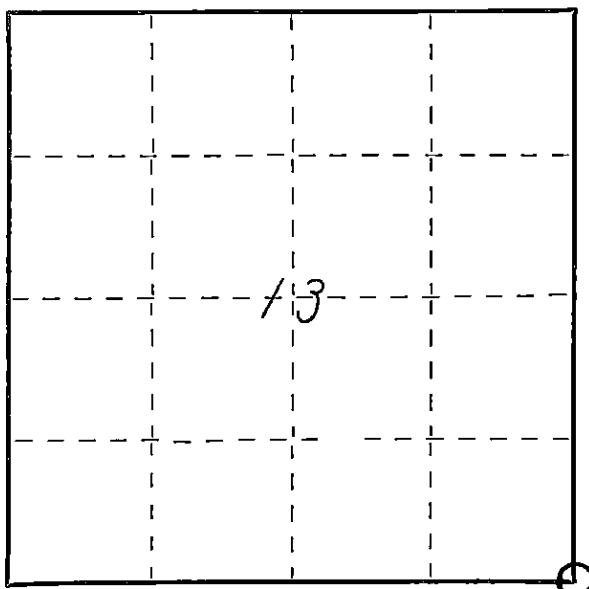
I, NEAL SPERHAKE, do hereby
certify that on the FOURTEENTH day
of NOVEMBER, 1961, I found
evidence of the SOUTHEAST SECTION
corner of SECTION 13
Township 34, North, Range
13 EAST, Fourth Principal Meridian,
as described hereon; and that from this evidence
I established a new monument and accessories
as described hereon to perpetuate the original
location of this corner.

Resident witnesses:

Les. Hillberg - Crandon

Richard Piontek - Waubesa

David Seaburg - Laona



○ = Corner monument restored.

CERTIFIED LAND CORNER RESTORATION

History of original corner establishment:

This corner can also be described as: THE SECTION CORNER COMMON TO SECTIONS 13 AND
24, T34N-R13E, AND SECTIONS 18 AND 19,
T34N-R14E, 4TH P.M.

This corner was established during the original survey of this township, as noted
in the Original Field Notes for the Original Survey of T34N-R13E, 4th P. M.

Description of corner evidence found:

The stump of the original bearing tree, described in the original field notes as,

"HEMLOCK 10 S40E 27 links"

is still present at this date, with a portion of the original scribe marks still
visible.

Description of monument and accessories I established to perpetuate the original location of this corner.

At the site of the original post, as determined from the existing original bearing
tree noted above, I emplaced a " GALVANIZED IRON PIPE, THREE FEET LONG, ONE INCH IN
DIAMETER, WITH AN ALUMINUM CAP DENOTED AS, 'KIMBERLY-CLARK CORP T34N 13, 24, 18,
19, R13-14E SPERHAKE RLS 463 11-14-61".

The pipe is witnessed by:

Maple 6 N53°W 46 links. (Scribed S13 NBT).

Elm 6 S44W 12 links. (Scribed S24 NBT).

Ash 6 N33°E 34 links. (Scribed S18 NBT).

Maple 5 S54°E 12 links. (Scribed S19 NBT).

Dated at Crandon Wis. this 11th day of Feb., 1963

Signature Neal Sperhake Title Registered Land Surveyor Registration No. S-463
(County Surveyor, Registered Land Surveyor, or other duly authorized official)

Office of Register of Deeds, County of Forest, I hereby certify that the within
instrument was filed in this office for record on the 11th day of Feb., 1963
at 10 o'clock A M. 86841

Anna Peterson SUBSCRIBED & SWORN TO BEFORE ME THIS 11
(Register of Deeds) DAY OF FEB. 1963 Anna Peterson

By _____ Deputy

Notary Public, Forest Co., Wis.
Comm. expires 10/31/65

Index No.

N-25
N25

43413130000

Surveyors Seal

SEE ALSO N-1 T34 R14