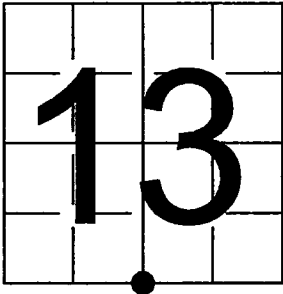


U. S. PUBLIC LAND SURVEY MONUMENT RECORD

NOTE: This form is intended and designed to fulfill all requirements of Wisconsin Administrative Code, Chapter A-E 7.08 U.S. Public Land Survey Monument Record (3) (a-i)

A-E 7.08(3)(a) Identity of corner:
South 1/4 Corner Section 13,
Township 34 North, Range 13 East
of the Fourth Principal Meridian,
Town of Nashville, Forest County,
Wisconsin

WISCRS - FOREST COUNTY
N: 516,464.647 USft (XXX,XXX.XXX)
E: 859,278.007 USft (XXX,XXX.XXX)
Datum: NAD83 (2011)
GNSS Method RTK
GNSS Control WISCORS VRS



The coordinate value shown has been verified by the average of two or more GPS observations at a markedly different time. Coordinates shown in parenthesis are previously published values.

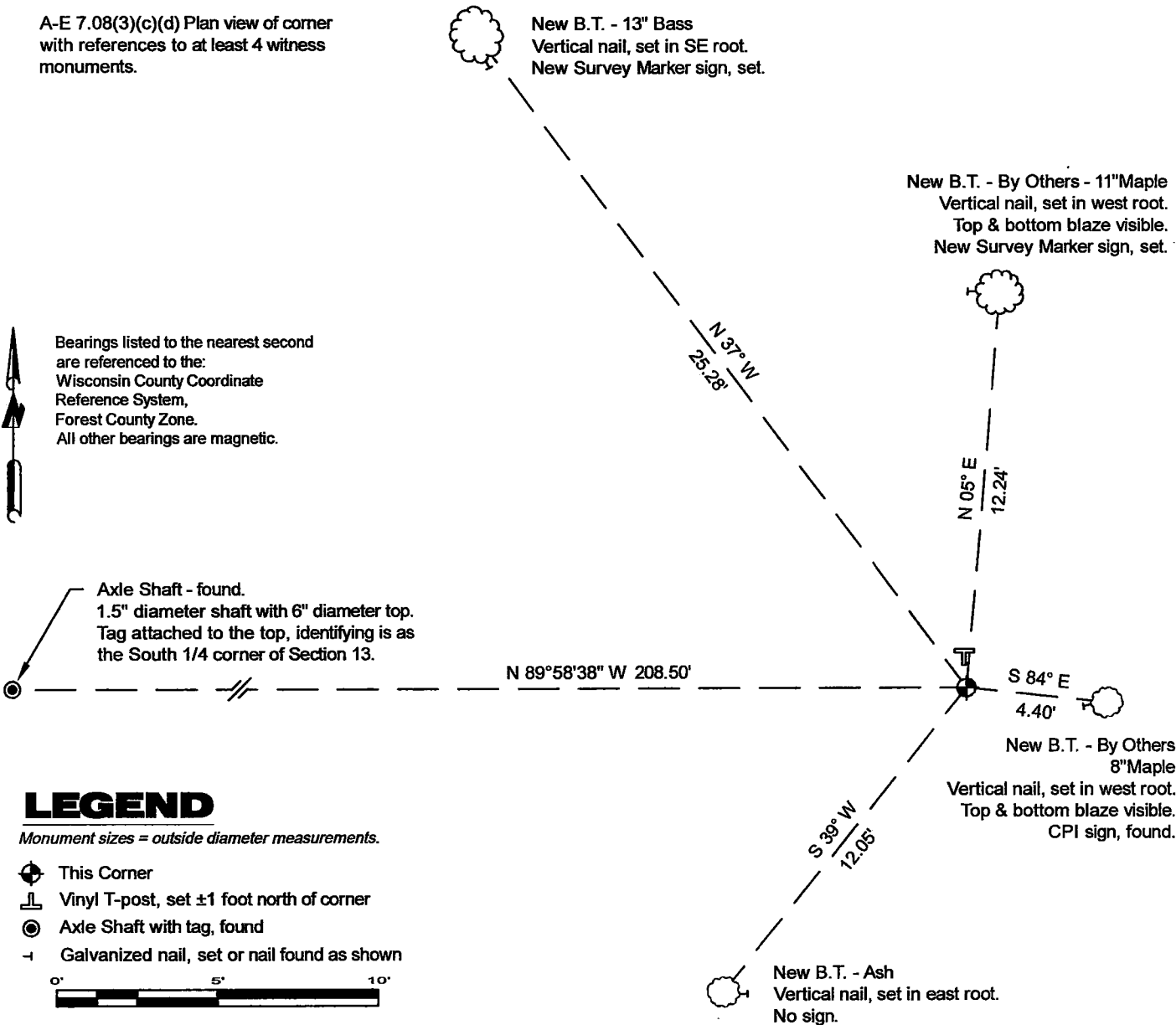
A-E 7.08(3)(b)

Original Surveyor: James L. Nowlin - October 3, 1865 to October 18, 1865
Birch 12 - N 18° E, 25 Links, Hemlock 10 - S 35° W, 30 Links

See previous Restoration of Lost Original Government Survey Corner - N-23 - August 25, 1964 - Surveyor 463 - Neal Sperhake - THENCE:

September 17, 2024 - I found a 1.3" diameter galvanized iron pipe monument with a 4" diameter aluminum cap stamped to identify the corner location. The monument extends ±21" above grade. I established 4 new reference monuments as shown below.

A-E 7.08(3)(c)(d) Plan view of corner with references to at least 4 witness monuments.



LEGEND

Monument sizes = outside diameter measurements.

- This Corner
- Vinyl T-post, set ±1 foot north of corner
- Axle Shaft with tag, found
- Galvanized nail, set or nail found as shown



A-E 7.08(3)(e) 1865 Surveyor set a post, 1964 Surveyor set a 1" diameter galvanized iron pipe with an aluminum Kimberly - Clark cap. In 2024 I found a 1.3" diameter galvanized iron pipe monument with a 4" diameter aluminum cap stamped to identify the corner location.

A-E 7.08(3)(f) I accept this monument in good faith as a FOUND PERPETUATED LOCATION of the corner.
A-E 7.08(3)(g)(h) This corner was previously determined through lost-corner-proportionate methods.

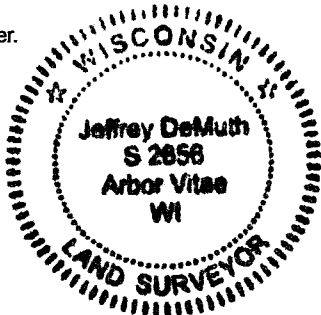
A-E 7.08(3)(i) I, Jeffrey L. DeMuth, Professional Land Surveyor No. S-2656, hereby certify that the corner location on this record was determined by me or under my direction and control, and that this U.S. Public Land Survey Monument Record is correct and complete to the best of my knowledge, and belief.

SIGNATURE

Jeffrey L. DeMuth

December 27, 2024

DATE



43413130020

43413130020

N23

State of Wisconsin }
County of FOREST } ss. RESTORATION OF LOST ORIGINAL GOVERNMENT SURVEY CORNER.

I NEAL SPERHAKE, do hereby certify that on the FIRST day of NOVEMBER, 1963, I established the NORTH QUARTER SECTION CORNER OF SECTION 24, TOWNSHIP 34 NORTH, RANGE 13 EAST, Fourth Principal Meridian, as described hereon.

History: This corner was established during the original survey of this township, as noted in the original field notes for the original survey of T34N-R13E, 4th. p.m.

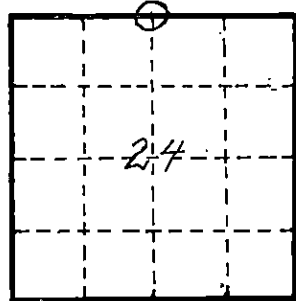
Description of monument and accessories I established to perpetuate the location of this corner:

At the point determined for the location of the corner I emplaced a:
GALVANIZED IRON PIPE, THREE FEET LONG, ONE INCH IN DIAMETER, WITH ALUMINUM CAP DENOTED AS, "KIMBERLY-CLARK CORP. T34N 1/4 BTWN. 13 & 24 R13E SPERHAKE RLS 463 11/1/63."

The pipe is witnessed by:

Elm 14 N 44°W 23 links. (SCRIBED S 1/4 13 NBT).
Elm 9 S 55°E 27 links. (SCRIBED S 1/4 24 NBT).

Description as to how corner was located: No evidence of original corner present. Thus, set by proportionate measurement. The section corners 1/2 mile east and west have been previously established with a distance of 76.03 chains between them. Thus, set the quarter corner 38.01 1/2 chains from either corner and on a straight line between them.



O = Corner monument restored

Subscribed & sworn to before me this 25 day of Aug 1964
Anna Peterson
NOTARY PUBLIC, FOREST CO., WIS
COM. EXPIRES 10/31/65

88970

Resident witnesses _____
Dated at Crandon, Wisconsin, this 25 day of Aug, 19 64.
Signature Neal Sperhake
Title Registered Land Surveyor Registration No. 463
Office of Reg. of Deeds County of Forest
I hereby certify that the within instrument was filed in this office for record on the 25 day of Aug 19 64, and was filed in Book No. _____ Page No. _____ of County Records.

Surveyor's Seal

Signature Anna Peterson Title Reg. of Deeds

43413130020

Index No. N 23
1423