

U.S. PUBLIC LAND SURVEY MONUMENT RECORD

This form is intended and designed to fulfill all requirements of Wisconsin Administrative Code, Chapter A-E 7.08 U.S. Public Land Survey Monument Record (3) (a)(b)(c)(d)(e)(f)(g)(h)(i).

The coordinate value shown has been verified by at least one of the following methods: 1) Comparison to a previously GNSS determined published value; 2) The value is the average of two or more GNSS observations at a markedly different time; 3) One or more distances were measured back to the GNSS observed corner from temporary GNSS observed offset locations.

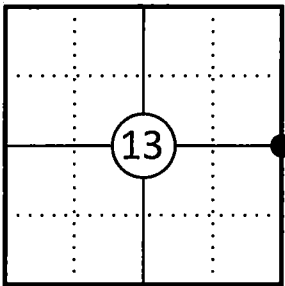
A-E 7.08(3)(a) Identity of the corner:

E 1/4 Corner Section 13	WISCRS - Forest County
Township 34 North	N: 519043.201 USFT
Range 13 East	E: 861902.510 USFT
Town of Nashville	Datum: NAD 83 (2011)
County of Forest	GNSS Method: WISCORS VRS Direct Observation

Original Corner Information:

Original Surveyor: Alfred Millard	Original B.T.'s: Hemlock 12" - N56°W, 24 links
Date of Survey: August 1857	Y Birch 12" - N70°E, 26 links

Corner ID: 43413132000

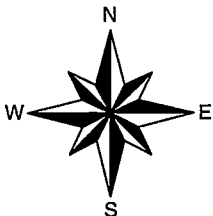
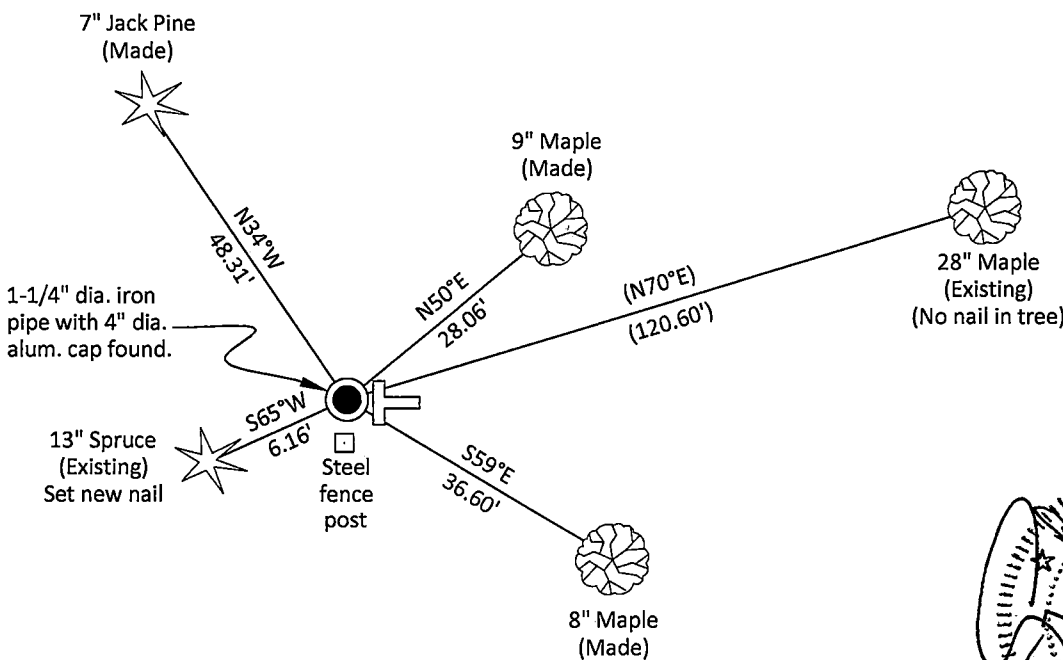


A-E 7.08(3)(b)(e)(f)(g) Describe any record evidence, monument evidence, occupational evidence, testimonial evidence or any other material evidence considered. Describe any discrepancy between the corner restored and any previously established location. State whether the corners was restored through acceptance of obliterated evidence, a found perpetuated location, or determined by proportionate methods.

- 02/11/1963 Certified Land Corner Restoration by Neal Sperhake indicates he set a 1" dia. iron pipe with a Kimberly Clark Corp aluminum cap from the stump of an original bearing tree and made one bearing tree. (See corner form for prior history and additional information).
- 03/09/1990 U.S. Public Land Survey Monument Record by Alan D. Harrison, which is not of record, found Sperhake's corner and his bearing tree, now an 18" Maple N70°E, 120.60'. He made two other bearing trees a Spruce 4" S68°W, 6.09' and a Spruce 5" N23°W, 12.88'.
- 2008-2009 Tim Rusch with Rusch Engineering and Surveying indicates a found aluminum capped monument on his survey in Section 13. Partial Map filed under Forest C. File # 341312.
- 10/07/2025 I found and accepted a 1-1/4" dia. iron pipe with a Kimberly Clark Corp 4" dia. aluminum cap stamped to identify the corner 12" above grade and three existing bearing trees and one of which is dead. I made two additional bearing trees to witness the corner as shown below.

A-E 7.08(3)(c)(d)(e)(h) Plan view of corner with ties to at least four witnesses. If in disagreement with previously established corner, show the distances between the two corners and also indicate the tie to the disputed corner. Distances and directions to other PLSS used as evidence or for proportioning.

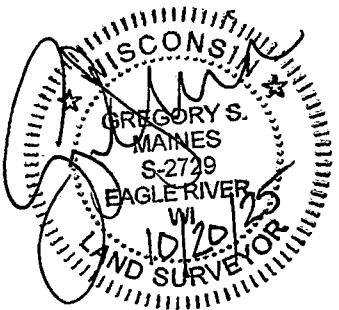
Bearings given to the nearest second are Forest County Grid. All other bearings are magnetic



- \* Vinyl "T" post 0.8' east of corner and a steel fence post found 1.0' south of corner.
- \* Distances to bearing trees are to nail in side with BT tag on tree.
- \* Sketch is not to scale

A-E 7.08(3)(i) - Certification

I, Gregory S. Maines, Professional Land Surveyor No. 2729, hereby certify that the corner location on this record was referenced by me or under my direction and control and that this U.S. Public Land Survey Monument Record is complete to the best of my knowledge and belief.



State of Wisconsin }  
County of FOREST } ss.

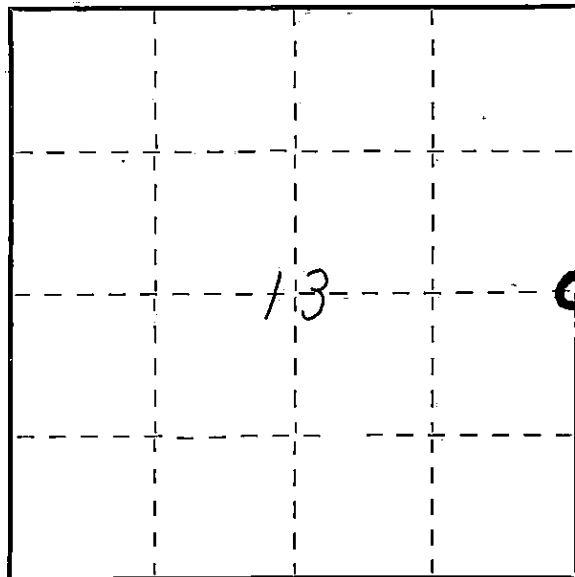
I, NEAL SPERHAKE, do hereby certify that on the FOURTEENTH day of NOVEMBER, 1961, I found evidence of the EAST QUARTER SECTION corner of SECTION 13 Township 34, North, Range 13 EAST, Fourth Principal Meridian, as described hereon; and that from this evidence I established a new monument and accessories as described hereon to perpetuate the original location of this corner.

Resident witnesses:

Les. Hillberg - Crandon

Richard Piontek - Waubesa

David Seaburg - Laona



○ = Corner monument restored.

# CERTIFIED LAND CORNER RESTORATION

Index No. L-25

L 25

History of original corner establishment:

This corner can also be described as: THE QUARTER SECTION CORNER BETWEEN SECTIONS 13, T34N-R13E, AND 18, T34N-R14E, 4TH P.M. SEE ALSO L-1 T34R#

This corner was established during the original survey of this township, as noted in the Original Field Notes for the Original Survey of T34N-R13E, 4th P.M.

Description of corner evidence found:

The stump of the original bearing tree, described in the original field notes as,

"Y. Birch 12 N70E 26"

is still present at this date, with a portion of the original scribe marks still visible at the base.

Description of monument and accessories I established to perpetuate the original location of this corner.

At the site of the original post, as determined from the existing original bearing tree noted above I emplaced a " GALVANIZED IRON PIPE, THREE FEET LONG, ONE INCH IN DIAMETER, WITH AN ALUMINUM CAP DENOTED AS, 'KIMBERLY-CLARK CORP T34N 1/4 BTWN 13 & 18 R13-14E SPERHAKE RLS - 463 11-14-61".

The pipe is witnessed by:

"Maple 12 N71°E 183 links. (Scribed S18 NBT)"

Nothing else available to witness because of open fields.

Dated at Crandon Wis. this 11th day of Feb., 19 63

Signature [Signature] Title Registered Land Surveyor Registration No. s-463  
(County Surveyor, Registered Land Surveyor, or other duly authorized official)

Office of Register of Deeds, County of Forest, I hereby certify that the within instrument was filed in this office for record on the 11th day of Feb., 19 63 at 10 o'clock A.M. 86840

Anna Peterson  
(Register of Deeds)

SUBSCRIBED & SWORN TO BEFORE ME THIS 11TH DAY OF FEB. 1963  
Anna Peterson  
Notary Public, Forest Co., Wis  
Comm. expires 10/31/65

By \_\_\_\_\_ Deputy

43413132000  
Surveyors Seal