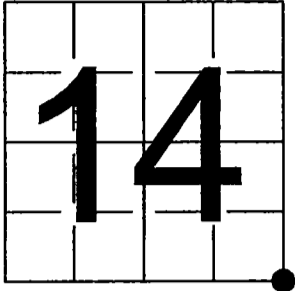


U. S. PUBLIC LAND SURVEY MONUMENT RECORD ADDENDUM

NOTE: This form is intended and designed to fulfill all requirements of Wisconsin Administrative Code, Chapter A-E 7.08 U.S. Public Land Survey Monument Record (3) (a-i)

A-E 7.08(3)(a) Identity of corner:  
Southeast Corner Section 14,  
Township 34 North, Range 13 East  
of the Fourth Principal Meridian,  
Town of Nashville, Forest County,  
Wisconsin

WISCRS - FOREST COUNTY  
N: 516,540.298 USft (XXX,XXX.XXX)  
E: 856,773.004 USft (XXX,XXX.XXX)  
Datum: NAD83 (2011)  
GNSS Method RTK  
GNSS Control WISCRS VRS



The coordinate value shown has been verified by the average of two or more GPS observations at a markedly different time. Coordinates shown in parenthesis are previously published values.

A-E 7.08(3)(b)

Original Surveyor: James L. Nowlin - October 3, 1865 to October 18, 1865  
Sugar 9 - N 73° E, 10 Links, Birch 12 - N 53° W, 15 Links

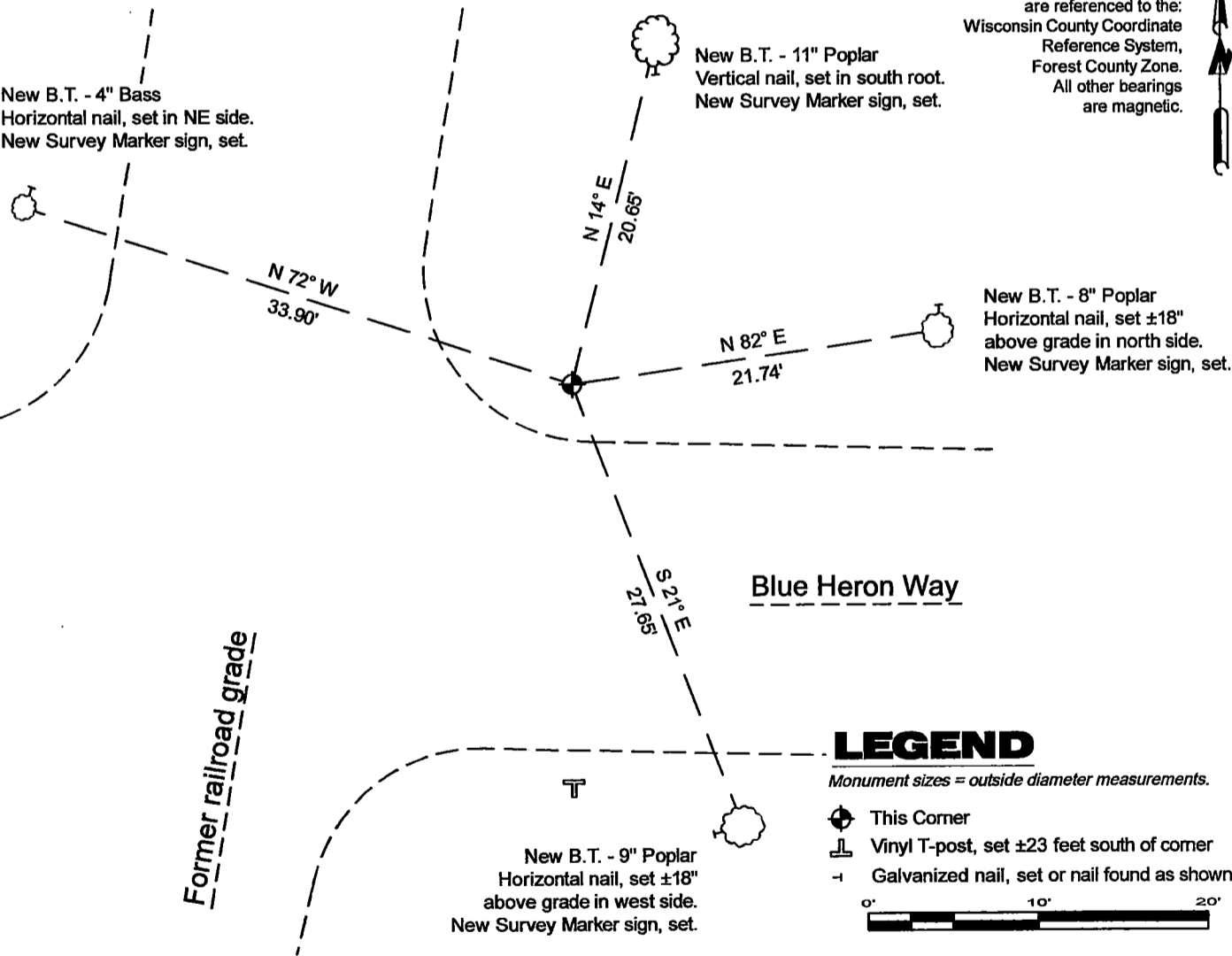
See previous Restoration of Lost Original Government Survey Corner - N-21 - August 25, 1964 - Surveyor 463 - Neal Sperhake - THENCE:

- February 1, 2021 - Surveyor 3201 - John M. Jursa - indicates this position as "2.5" iron pipe with 3.25" aluminum cap" on county record Map #341314-20210201.

September 24, 2024 - I found a 2.25" diameter aluminum pipe monument with a 3.25" diameter aluminum cap stamped to identify the corner location. The monument is in the northwest quadrant of Blue Heron Way and the former railroad grade. I established 4 new reference monuments as shown below.

A-E 7.08(3)(c)(d) Plan view of corner with references to at least 4 witness monuments.

Bearings listed to the nearest second are referenced to the: Wisconsin County Coordinate Reference System, Forest County Zone. All other bearings are magnetic.



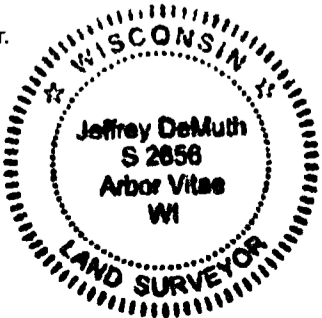
A-E 7.08(3)(e) 1865 Surveyor set a post, 1964 Surveyor set a 1" diameter galvanized iron pipe with an aluminum Kimberly Clark cap, 2021 surveyor found a 2.5" iron pipe with a 3.25" diameter aluminum cap. I found a 2.25" diameter aluminum pipe monument with a 3.25" diameter aluminum cap stamped to identify the corner location in 2024.  
A-E 7.08(3)(f) I accept this monument in good faith as a FOUND PERPETUATED LOCATION of the corner.  
A-E 7.08(3)(g)(h) This corner was not determined through lost-corner-proportionate methods.

A-E 7.08(3)(i) I, Jeffrey L. DeMuth, Professional Land Surveyor No. S-2656, hereby certify that the corner location on this record was determined by me or under my direction and control, and that this U.S. Public Land Survey Monument Record is correct and complete to the best of my knowledge, and belief.

SIGNATURE

December 27, 2024

DATE



43413140000

43413140000

N21

State of Wisconsin  
County of FOREST

ss. RESTORATION OF LOST ORIGINAL GOVERNMENT SURVEY CORNER.

I NEAL SPERHAKE, do hereby certify that on the FIRST day of NOVEMBER, 19 63, I established the NORTHWEST SECTION CORNER OF SECTION 24, TOWNSHIP 34 NORTH, RANGE 13 EAST, Fourth Principal Meridian,  
as described hereon.

History: This corner was established during the original survey of this township, as noted in the original field notes for the original survey of T34N-R13E, 4th. p.m.

Description of monument and accessories I established to perpetuate the location of this corner:  
At the point determined for the location of the corner I emplaced a:

GALVANIZED IRON PIPE, THREE FEET LONG, ONE INCH IN DIAMETER, WITH ALUMINUM CAP DENOTED AS, "KIMBERLY-CLARK CORP. T34N 13, 14, 23, 24 R13E SPERHAKE RLS 463 11/1/63."

The pipe is witnessed by:

Elm 14 N 67°W 114 links. (SCRIBED S14 NBT).  
Maple 15 S 38°W 206 links. (SCRIBED S23 NBT).  
Elm 15 S 18°E 190 links. (SCRIBED S24 NBT).  
Maple 32 N 43°E 217 links. (SCRIBED S13 NBT).

Description as to how corner was located: No evidence of original corner present. To the north the quarter section corner between sections 13 and 14, and to the south the quarter section corner between sections 23 and 24 have been previously established with a distance of 79.64 chains between them. Thus, the north-south position of 13, 14, 23, 24, has been established as being 39.82 chains from either previously established quarter section corner. It is impossible to determine the east-west position of the corner by proportionate measurement because this portion of the original survey was too erratic in this area. Proportionate measurement, and also the Geologic maps of this area show this corner to be more than a hundred feet west of the center line of the railroad. However, Mr. C. E. Jones, a 91 year old resident of Antigo, Wisconsin, and formerly a logger in this area personally has pointed out a position east of the railroad track as being approximately the position of the corner. A copy of the Soo Line Railroad survey map of this portion of their track, made some time prior to 1900, verifies Mr. Jones contention. This map shows that the section corner should be 23 feet east of the center line of the railroad. This map is obtainable from the Soo Line Railroad offices at Minneapolis, Minnesota. Original evidence of the original corners has been located at the corner common to 1, 2, 11, 12, and the quarter section corner between 13 and 14, and in both of these cases the railroad map agrees exactly with the distances found on the ground. Therefore, I believe the railroad map is correct with reference to the lost or obliterated section corner common to 13, 14, 23, 24. Thus, I determined the east-west position of the corner to be 23 feet east of the center line of the railroad, or 76.03 chains west of the range line corner of 13 and 24.

Resident witnesses

Dated at \_\_\_\_\_, Wisconsin, this \_\_\_\_\_ day of \_\_\_\_\_, 19 \_\_\_\_\_.

Signature Neal Sperhake

Title Registered Land Surveyor Registration No. 463

Office of Reg. of Deeds County of Forest

I hereby certify that the within instrument was filed in this office for record on the 25 day of Aug 19 64, and was filed in Book No. \_\_\_\_\_ Page No. \_\_\_\_\_ of County Records.

Signature Anna Peterson Title Reg. of Deeds

43413 140000

Subscribed & sworn to before me  
this 25 day of Aug 1964  
Anna Peterson  
NOTARY PUBLIC  
FOREST CO., WIS  
COM. EXPIRES 10/31/65

Surveyor's Seal

88963

Index No. M-21

1121