

U.S. PUBLIC LAND SURVEY MONUMENT RECORD

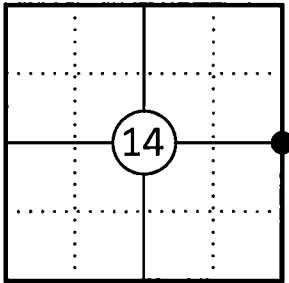
This form is intended and designed to fulfill all requirements of Wisconsin Administrative Code, Chapter A-E 7.08 U.S. Public Land Survey Monument Record (3) (a)(b)(c)(d)(e)(f)(g)(h)(i).

The coordinate value shown has been verified by at least one of the following methods: 1) Comparison to a previously GNSS determined published value; 2) The value is the average of two or more GNSS observations at a markedly different time; 3) One or more distances were measured back to the GNSS observed corner from temporary GNSS observed offset locations.

A-E 7.08(3)(a) Identity of the corner:

E 1/4 Corner Section 14	WISCORS - Forest County
Township 34 North	N: 519173.187 USFT
Range 13 East	E: 856846.373 USFT
Town of Nashville	Datum: NAD 83 (2011)
County of Forest	GNSS Method: WISCORS VRS Direct Observation

Corner ID: 43413142000



Original Corner Information:

Original Surveyor: J.L. Nowlin	Original B.T.'s: Hemlock 14" - S24°W, 25 links
Date of Survey: October 1865	Cedar 12" - N48°E, 20 links

A-E 7.08(3)(b)(e)(f)(g) Describe any record evidence, monument evidence, occupational evidence, testimonial evidence or any other material evidence considered. Describe any discrepancy between the corner restored and any previously established location. State whether the corners was restored through acceptance of obliterated evidence, a found perpetuated location, or determined by proportionate methods.

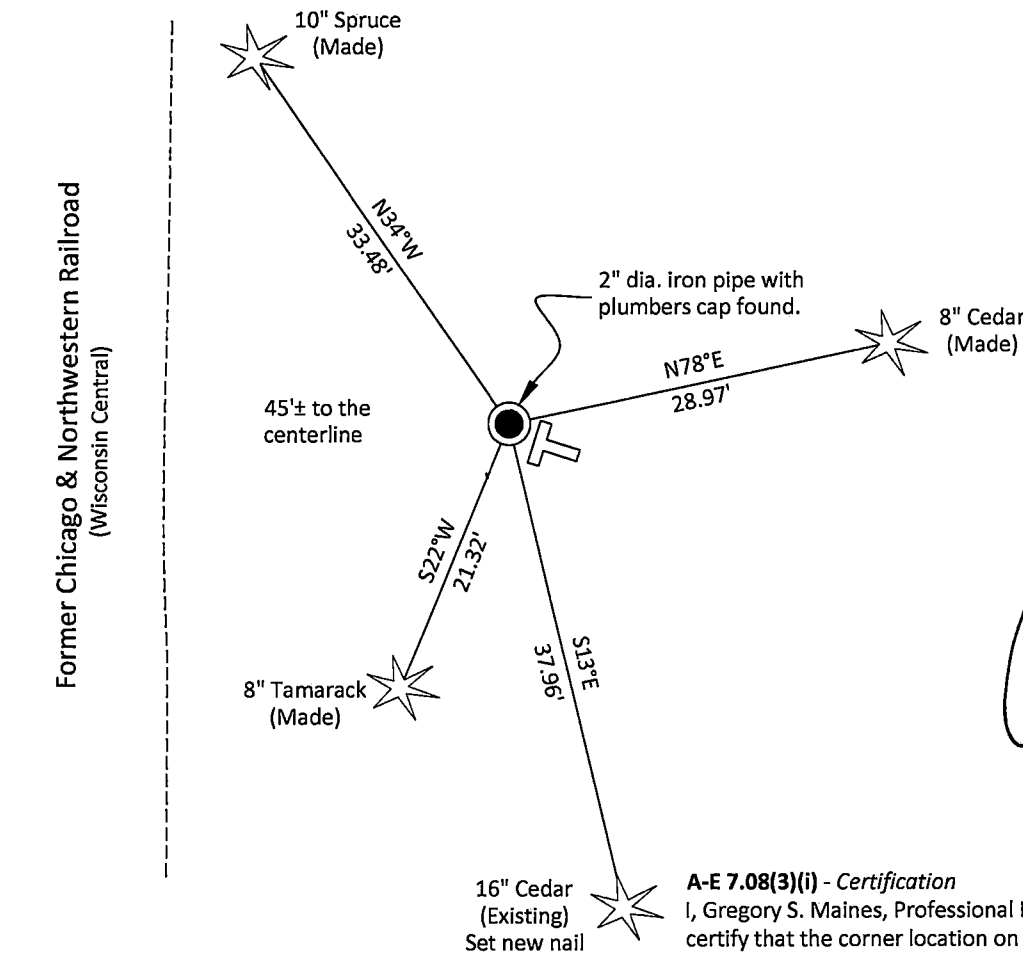
08/25/1964 Certified Land Corner Restoration by Neal Sperhake indicates he set a 1" dia. iron pipe with a Kimberly Clark Corp aluminum cap from the stump of an original bearing tree and made two bearing trees. (See corner form for prior history and additional information).

03/27/2000 Robert O. Kamps, the plat of "Eastern Shores of Lily Lake" indicates he found a 1-1/2" dia. iron pipe.

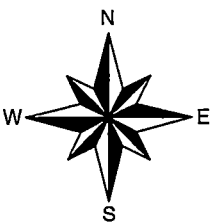
2008-2009 Tim Rusch with Rusch Engineering and Surveying indicates a found brass-capped monument on his survey in Section 13. Partial Map filed under Forest Co. File # 341312.

10/07/2025 I found and accepted a 2" dia. iron pipe with a plumbers cap stamped to identify the corner 18" above grade along with one existing bearing tree which appears to be Sperhake's southeast Cedar. The monument found does not match Sperhake's description of what he set in 1964, but the location matches the existing southeast bearing tree. The location of the iron pipe matches what Kamps and Rusch used on their surveys. I made three additional bearing trees to witness the corner as shown below.

A-E 7.08(3)(c)(d)(e)(h) Plan view of corner with ties to at least four witnesses. If in disagreement with previously established corner, show the distances between the two corners and also indicate the tie to the disputed corner. Distances and directions to other PLSS used as evidence or for proportioning.



Bearings given to the nearest second are Forest County Grid. All other bearings are magnetic



- * Vinyl "T" post 0.5' southeast of corner.
- * Distances to bearing trees are to nail in side with BT tag on tree.
- * Sketch is not to scale

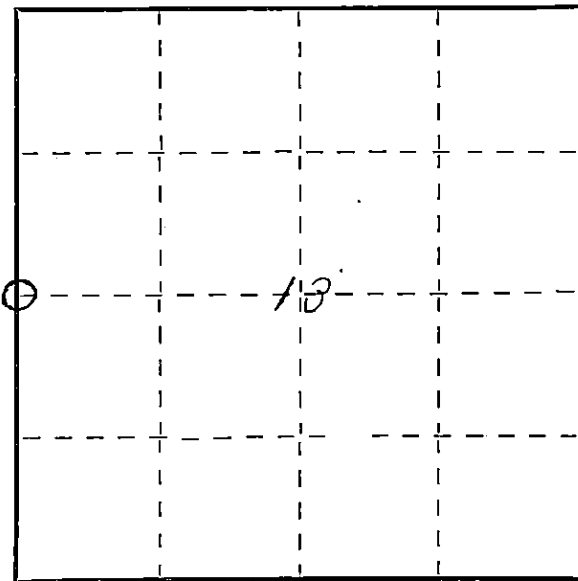


A-E 7.08(3)(i) - Certification
I, Gregory S. Maines, Professional Land Surveyor No. 2729, hereby certify that the corner location on this record was referenced by me or under my direction and control and that this U.S. Public Land Survey Monument Record is complete to the best of my knowledge and belief.

State of Wisconsin }
County of FOREST } ss.

I NEAL SPERHAKE, do hereby
certify that on the TWENTY-FIRST day
of OCTOBER, 19 63, I found
evidence of the WEST QUARTER SECTION
corner of SECTION 13
Township 34, North, Range
13 EAST, Fourth Principal Meridian,
as described hereon; and that from this evidence
I established a new monument and accessories
as described hereon to perpetuate the original
location of this corner.

Resident witnesses:



○ = Corner monument restored.

CERTIFIED LAND CORNER RESTORATION

88972

Index No.

L-21

L 21

History of original corner establishment:

This corner can also be described as: "THE QUARTER SECTION CORNER COMMON TO SECTIONS
13 AND 14, T34N-R13E, 4th. p.m.

This corner was established during the original survey of this township, as noted
in the Original Field Notes for the Original Survey of T34N-R13E, 4th. p.m.

Description of corner evidence found:

The stump of the original bearing tree, described in the original field notes as:

" Cedar 12 N 48°E 20 links."

is still present at this date, with a portion of the original scribe marks still visible.

Description of monument and accessories I established to perpetuate the original location of this corner.

At the site of the original post, as determined from the existing original bearing
tree noted above, I emplaced a "Galvanized iron pipe, three feet long, one inch in
diameter, with an aluminum cap denoted as, 'Kimberly-Clark Corp. T34N 1/4 BTWN.
13 & 14 R13E SPERHAKE RLS 463 10/21/63."

The pipe is witnessed by:

Cedar 6 S 14°E 57 (SCRIBED 1/4 S13 NBT).
Telegraph Pole S 82°W 22 (SCRIBED 1/4 S14 NBT).

Dated at Grandon, Wis., this 25 day of Aug, 19 64

Signature Neal Sperhake Title Registered Land Surveyor Registration No. 463
(County Surveyor, Registered Land Surveyor, or other duly authorized official)

Office of Register of Deeds, County of Forest, I hereby certify that the within
instrument was filed in this office for record on the 25 day of Aug, 19 64
at 2 o'clock P. M.

Anna Peterson
(Register of Deeds)

Subscribed & sworn to before me by Neal
Sperhake this 25 day of Aug 1964

Anna Peterson
NOTARY PUBLIC, FOREST CO., WIS
COM. EXP. 10/31/65

By _____ Deputy

Surveyor's
Seal

A 3413142000