

U.S. PUBLIC LAND SURVEY MONUMENT RECORD

This form is intended and designed to fulfill all requirements of Wisconsin Administrative Code, Chapter A-E 7.08 U.S. Public Land Survey Monument Record (3) (a)(b)(c)(d)(e)(f)(g)(h)(i).

The coordinate value shown has been verified by at least one of the following methods: 1) Comparison to a previously GNSS determined published value; 2) The value is the average of two or more GNSS observations at a markedly different time; 3) One or more distances were measured back to the GNSS observed corner from temporary GNSS observed offset locations.

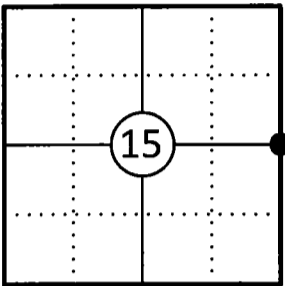
A-E 7.08(3)(a) Identity of the corner:

E 1/4 Corner (MC) Section 15	WISCRS - Forest County
Township 34 North	N: 519370.965 USFT
Range 13 East	E: 851686.311 USFT
Town of Nashville	Datum: NAD 83 (2011)
County of Forest	GNSS Method: WISCRS VRS Direct Observation

Original Corner Information:

Original Surveyor: J.L. Nowlin	Original B.T.'s: Tamarack 8" - N5°E, 25 links
Date of Survey: October 1865	Tamarack 12" - West, 32 links

Corner ID: 43413152000



A-E 7.08(3)(b)(e)(f)(g) Describe any record evidence, monument evidence, occupational evidence, testimonial evidence or any other material evidence considered. Describe any discrepancy between the corner restored and any previously established location. State whether the corners was restored through acceptance of obliterated evidence, a found perpetuated location, or determined by proportionate methods.

12/12/1963 Restoration of Lost Original Government Survey Corner by Neal Sperhake indicates he set a 1" dia. iron pipe with a Kimberly Clark Corp aluminum cap by single proportion and made two bearing trees. (See corner form for prior history and additional information).

08/14/1978 Thomas R. Arnott, Certified Survey Map Vol. 2, Pg. 220 found a pipe with an aluminum cap.

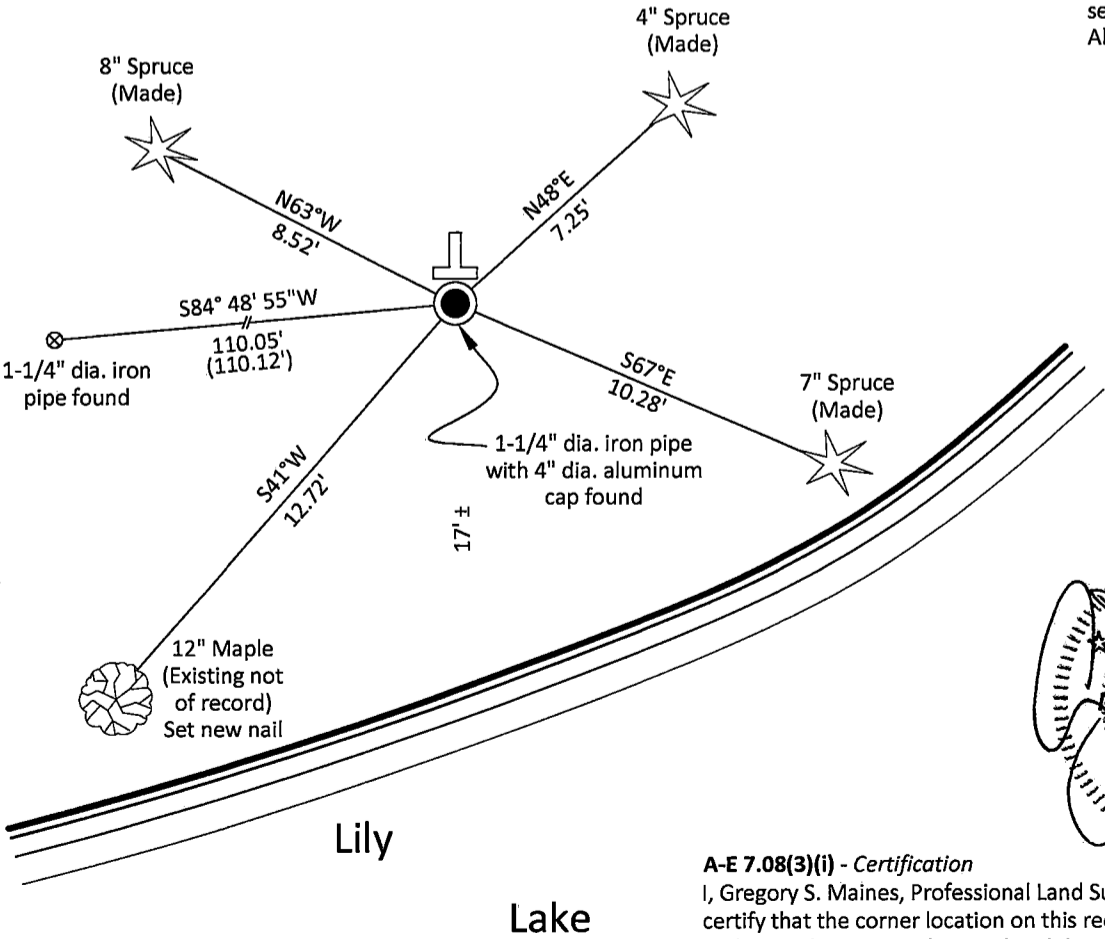
04/26/1979 Thomas R. Arnott, Certified Survey Map Vol. 2, Pg. 260 found a pipe with an aluminum cap.

08/26/2021 Thomas J. McGuire, Certified Survey Map Vol. 10, Pg. 84 found an iron pipe with aluminum cap.

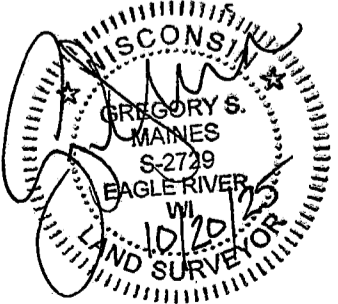
04/15/2025 The original government survey notes indicates this as a 1/4 Sec/MC post. I found and accepted a 1-1/4" dia. iron pipe with a Kimberly Clark Corp 4" dia. aluminum cap stamped to identify the corner 18" above grade along with one bearing tree, not of record. I used a found iron pipe from Certified Survey Map Vol. 2, Pg. 220 and made three additional bearing trees to witness the corner as shown below.

A-E 7.08(3)(c)(d)(e)(h) Plan view of corner with ties to at least four witnesses. If in disagreement with previously established corner, show the distances between the two corners and also indicate the tie to the disputed corner. Distances and directions to other PLSS used as evidence or for proportioning.

Bearings given to the nearest second are Forest County Grid. All other bearings are magnetic



- * Vinyl "T" post 1.3' north of corner.
- * Distances to bearing trees are to nail in side with BT tag on tree.
- * Sketch is not to scale



A-E 7.08(3)(i) - Certification
I, Gregory S. Maines, Professional Land Surveyor No. 2729, hereby certify that the corner location on this record was referenced by me or under my direction and control and that this U.S. Public Land Survey Monument Record is complete to the best of my knowledge and belief.

State of Wisconsin

County of FOREST

ss. RESTORATION OF LOST ORIGINAL GOVERNMENT SURVEY CORNER.

I NEAL SPERHAKE, do hereby certify that on the TWELFTH day of NOVEMBER, 1963, I established the WEST QUARTER SECTION CORNER OF SECTION 14, TOWNSHIP 34 NORTH, RANGE 13 EAST, Fourth Principal Meridian, as described hereon.

History: This corner was established during the original survey of this township, as noted in the original field notes for the original survey of T34N-R13E, 4th. p.m.

Description of monument and accessories I established to perpetuate the location of this corner:

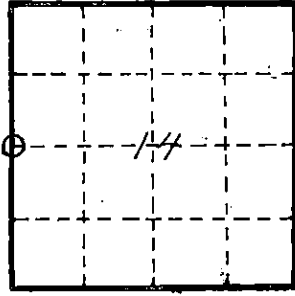
At the point determined for the location of the corner I emplaced a:

GALVANIZED IRON PIPE, THREE FEET LONG, ONE INCH IN DIAMETER, WITH ALUMINUM CAP DENOTED AS, "KIMBERLY-CLARK CORP. T34N 1/4 BTWN. 14 & 15 R13E SPERHAKE RLS 463 11/12/63."

The pipe is witnessed by:

- W. Birch 8 S 86°E 18 1/2 links. (SCRIBED 1/4 S 14 NBT).
- W. Birch 7 N 48°W 22 links. (SCRIBED 1/4 S 15 NBT).

Description as to how corner was located: No evidence of original corner present. Thus, set by proportionate measurement. The section corners 1/2 mile north and south have been previously established with a distance of 74.89 chains between them. Thus, set the quarter corner 37.44 1/2 chains from either corner and on a straight line between them.



O = Corner monument restored

Subscribed & sworn to before me this 25 day Aug 1964.

Anna Peterson
NOTARY PUBLIC, FOREST CO., WIS
COM. EXPIRES 10/31/65

Resident witnesses _____

Dated at Grandon, Wisconsin, this 25 day of Aug, 1964.

Signature Neal Sperhake

Title Registered Land Surveyor Registration No. 463

Office of Reg. of Deeds County of Forest

I hereby certify that the within instrument was filed in this office for record on the 25 day of Aug 1964, and was filed in Book No. _____ Page No. _____ of County Records.

Surveyor's Seal

Signature Anna Peterson Title Reg. of Deeds

43413152000

5889

Index No.

7-17