

U.S. PUBLIC LAND SURVEY MONUMENT RECORD

This form is intended and designed to fulfill all requirements of Wisconsin Administrative Code, Chapter A-E 7.08 U.S. Public Land Survey Monument Record (3) (a)(b)(c)(d)(e)(f)(g)(h)(i).

The coordinate value shown has been verified by at least one of the following methods: 1) Comparison to a previously GNSS determined published value; 2) The value is the average of two or more GNSS observations at a markedly different time; 3) One or more distances were measured back to the GNSS observed corner from temporary GNSS observed offset locations.

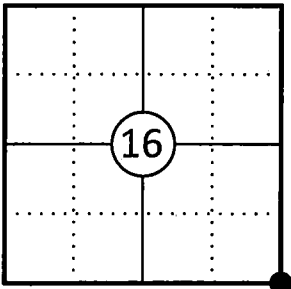
A-E 7.08(3)(a) Identity of the corner:

SE Corner Section 16	WISCRS - Forest County
Township 34 North	N: 516711.241 USFT
Range 13 East	E: 846056.845 USFT
Town of Nashville	Datum: NAD 83 (2011)
County of Forest	GNSS Method: WISCRS VRS Direct Observation

Original Corner Information:

Original Surveyor: J.L. Nowlin	Original B.T.'s: Tamarack 8" - N24°W, 15 links
Date of Survey: October 1865	Tamarack 12" - N31°E, 27 links

Corner ID: 43413160000



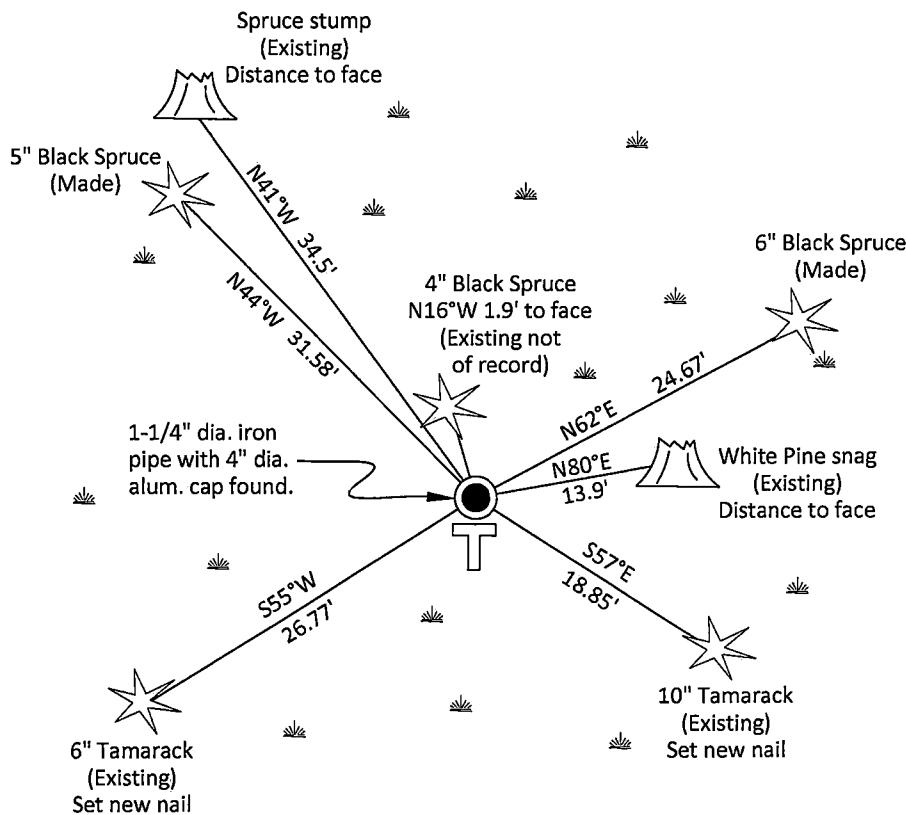
A-E 7.08(3)(b)(e)(f)(g) Describe any record evidence, monument evidence, occupational evidence, testimonial evidence or any other material evidence considered. Describe any discrepancy between the corner restored and any previously established location. State whether the corners was restored through acceptance of obliterated evidence, a found perpetuated location, or determined by proportionate methods.

02/11/1963 Certified Land Corner Restoration by Neal Sperhake indicates he set a 1" dia. iron pipe with a Kimberly Clark Corp aluminum cap from an original bearing tree and made four bearing trees. (See corner form for prior history and additional information).

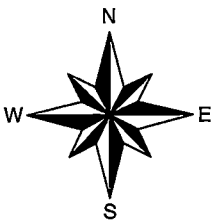
10/08/1998 Glen Barker, Forest Co Surveyor File # 341322-19981008 found a 1" dia. iron pipe with 4" alloy cap.

04/01/2025 I found and accepted a 1-1/4" dia. iron pipe with a Kimberly Clark Corp 4" dia. aluminum capped stamped to identify the corner 4" below grade in a spruce swamp along with five existing bearing trees, one not of record, one standing and dead and one now a stump. I made two additional bearing trees to witness the corner as shown below.

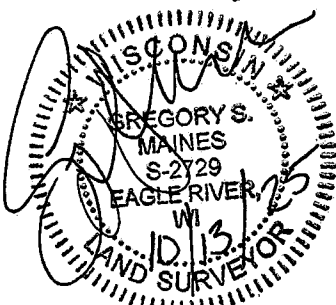
A-E 7.08(3)(c)(d)(e)(h) Plan view of corner with ties to at least four witnesses. If in disagreement with previously established corner, show the distances between the two corners and also indicate the tie to the disputed corner. Distances and directions to other PLSS used as evidence or for proportioning.



Bearings given to the nearest second are Forest County Grid. All other bearings are magnetic



- * Vinyl "T" post 0.5' south of corner.
- * Distances to bearing trees are to nail in side with BT tag on tree.
- * Sketch is not to scale



A-E 7.08(3)(i) - Certification
I, Gregory S. Maines, Professional Land Surveyor No. 2729, hereby certify that the corner location on this record was referenced by me or under my direction and control and that this U.S. Public Land Survey Monument Record is complete to the best of my knowledge and belief.

Index No.: N/3

43413160006

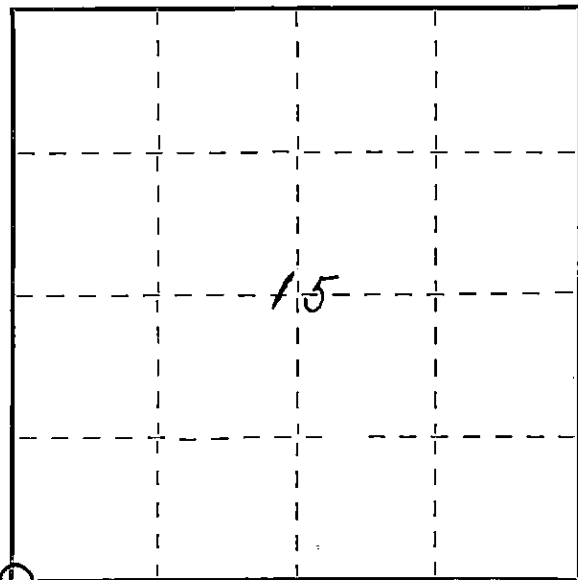
State of Wisconsin }
County of FOREST } ss.

I NEAL SPERHAKE, do hereby
certify that on the FIFTEENTH day
of NOVEMBER, 1961, I found
evidence of the SOUTHWEST SECTION
corner of SECTION 15
Township 34, North, Range
13 EAST, Fourth Principal Meridian,
as described hereon; and that from this evidence
I established a new monument and accessories
as described hereon to perpetuate the original
location of this corner.

Resident witnesses:

Richard Piontek - Waubesa

David Pichotta - Waubesa



○ = Corner monument restored.

CERTIFIED LAND CORNER RESTORATION

Index No. N-13

N13

History of original corner establishment:

This corner can also be described as: THE SECTION CORNER COMMON TO SECTIONS
15, 16, 21, 22, T34N-R13E, 4th P.M.

This corner was established during the original survey of this township, as noted
in the Original Field Notes for the Original Survey of T34N-R13E, 4th P.M.

Description of corner evidence found:

The original bearing tree, described in the original field notes as,

"Tamarack 12 N31E 27 links"

is still present at this date, with a portion of the original scribe marks still visible.

Description of monument and accessories I established to perpetuate the original location of this corner.

At the site of this original post, as determined from the existing original bearing
tree noted above, I emplaced a "GALVANIZED IRON PIPE, THREE FEET LONG, ONE INCH IN
DIAMETER, WITH AN ALUMINUM CAP DENOTED AS, 'KIMBERLY-CLARK CORP T34N
15, 16, 21, 22, R13E SPERHAKE RLS 463 11-15-61".

The pipe is witnessed by:

E. Pine 8 N80°E 21 links. (Scribed S15 NBT).
Spruce 6 N41°W 52 links. (Scribed S16 NBT).
Tamarack 2 S55°W 40½ links. (Scribed S21 NBT).
Tamarack 4 S62E 29 links. (Scribed S22 NBT).

Dated at Crandon Wis., this 11th day of Feb., 1963

Signature Neal Sperhake Title Registered Land Surveyor Registration No. S-463
(County Surveyor, Registered Land Surveyor, or other duly authorized official)

Office of Register of Deeds, County of Forest, I hereby certify that the within
instrument was filed in this office for record on the 11th day of Feb., 1963
at 10 o'clock A M.

Anna Peterson 86842
(Register of Deeds)

SUBSCRIBED & SWORN TO BEFORE ME THIS
11TH DAY OF FEB. 1963

Anna Peterson
Notary Public, Forest Co., Wis
Comm. expires 10/31/65

By _____ Deputy

Surveyor's Seal

43413 160000