

U.S. PUBLIC LAND SURVEY MONUMENT RECORD

This form is intended and designed to fulfill all requirements of Wisconsin Administrative Code, Chapter A-E 7.08 U.S. Public Land Survey Monument Record (3) (a)(b)(c)(d)(e)(f)(g)(h)(i).

The coordinate value shown has been verified by at least one of the following methods: 1) Comparison to a previously GNSS determined published value; 2) The value is the average of two or more GNSS observations at a markedly different time; 3) One or more distances were measured back to the GNSS observed corner from temporary GNSS observed offset locations.

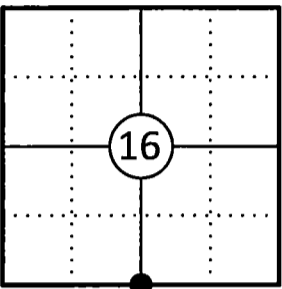
A-E 7.08(3)(a) Identity of the corner:

S 1/4 Corner Section 16	WISCRS - Forest County
Township 34 North	N: 516752.854 USFT
Range 13 East	E: 843409.075 USFT
Town of Nashville	Datum: NAD 83 (2011)
County of Forest	GNSS Method: WISCRS VRS Direct Observation

Original Corner Information:

Original Surveyor: J.L. Nowlin	Original B.T.'s: Cedar 10" - N52°W, 12 links
Date of Survey: October 1865	Hemlock 24" - S17°E, 5 links

Corner ID: 43413160020

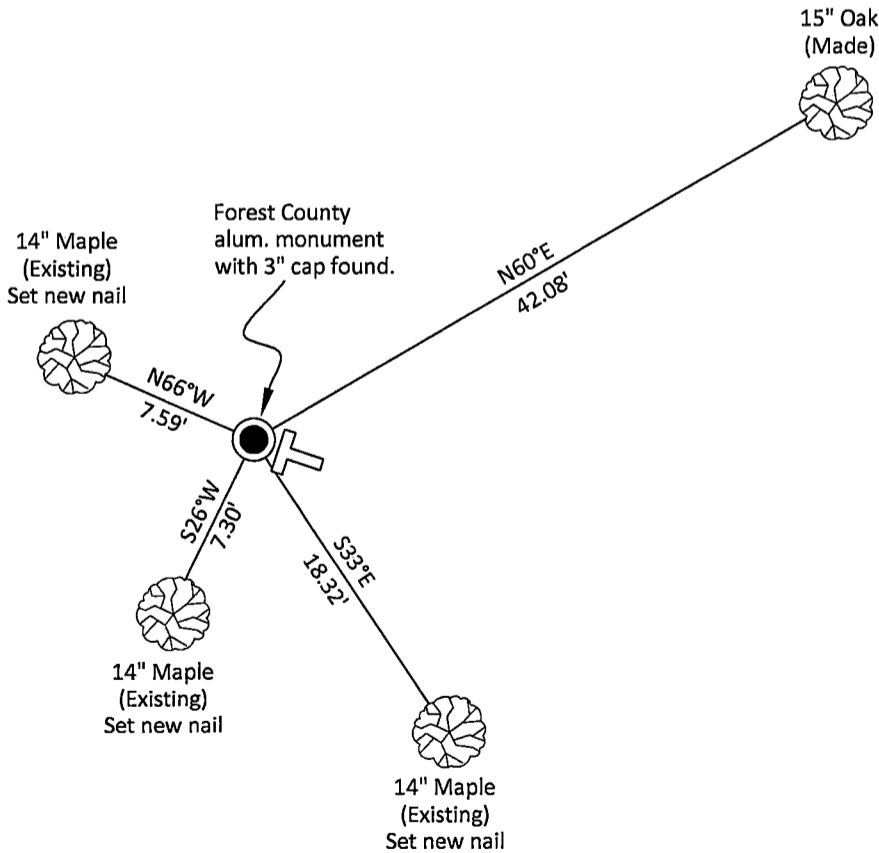


A-E 7.08(3)(b)(e)(f)(g) Describe any record evidence, monument evidence, occupational evidence, testimonial evidence or any other material evidence considered. Describe any discrepancy between the corner restored and any previously established location. State whether the corners was restored through acceptance of obliterated evidence, a found perpetuated location, or determined by proportionate methods.

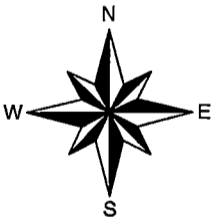
06/09/1983 Certified Land Corner Restoration by Glen Barker indicates he set a 2-1/2" aluminum A-1 Forest County monument with alloy cap by single proportion and made four bearing trees. (See corner form for prior history and additional information).

10/08/2025 I found and accepted a Forest County aluminum monument with a 3" dia. cap stamped to identify the corner 8" above grade along with three of Barker's bearing trees. I made one new bearing tree and witnessed the corner as shown below.

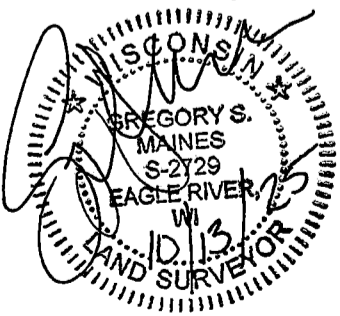
A-E 7.08(3)(c)(d)(e)(h) Plan view of corner with ties to at least four witnesses. If in disagreement with previously established corner, show the distances between the two corners and also indicate the tie to the disputed corner. Distances and directions to other PLSS used as evidence or for proportioning.



Bearings given to the nearest second are Forest County Grid. All other bearings are magnetic



- \* Vinyl "T" post 0.5' southeast of corner.
- \* Distances to bearing trees are to nail in side with BT tag on tree.
- \* Sketch is not to scale



A-E 7.08(3)(i) - Certification  
I, Gregory S. Maines, Professional Land Surveyor No. 2729, hereby certify that the corner location on this record was referenced by me or under my direction and control and that this U.S. Public Land Survey Monument Record is complete to the best of my knowledge and belief.

Index No.: 111

# CERTIFIED LAND CORNER RESTORATION

Index No. **NIT**

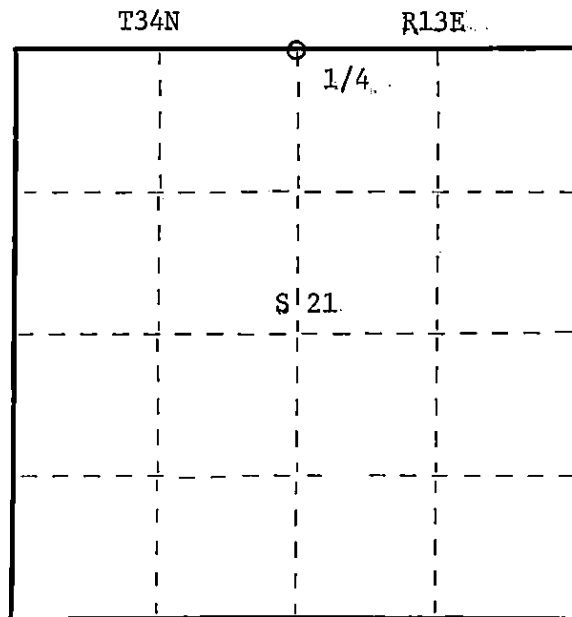
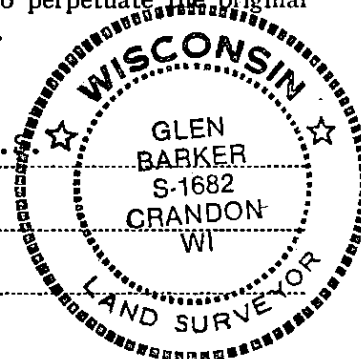
State of Wisconsin }  
County of Forest } ss.

I Glen Barker, do hereby  
certify that on the 16th day  
of May, 19 83, I ~~found~~ found estab'd.  
evidence of the Quarter  
corner of Sections 16 & 21  
Township 34, North, Range  
13 East, Fourth Principal Meridian,  
as described hereon; and that from this evidence  
I established a new monument and accessories  
as described hereon to perpetuate the original  
location of this corner.

Resident witnesses:

J. Claflin - R.L.S.

H. Wagoner



○ = Corner monument restored.

History of original corner establishment:

Original corner established in 1865 by James L. Nowlin, Gov. Deputy Surveyor  
from which cedar 10" bears N52W 12 lks and hemlock 24" S17E 5 lks.

Description of corner evidence found:

Total distance from recovered section corner 16-17-20-21 to section corner 15-16-21-22  
is 5295.60 ft. Set 1/4 corner 2647.80 ft. intermediate.

Description of monument and accessories I established to perpetuate the original location of this corner.

Set a 2 1/2" A-1 Forest County Monument with alloy cap stamped: T34N R13E  
Monument projects 18" above ground.

Marked NBTs:

Maple 8" S21W 7.82 ft.  
Maple 10" N71W 7.72 ft.  
Maple 6" N31E 15.38 ft.  
Maple 10" S35E 18.75 ft.

Scribed 1/4 - B.T.

1/4 S 16  
S 21  
S1682 - 1983

Dated at Rhineland, Wis., this 9th day of June, 19 83.

Signature Glen Barker Title Registered Land Surveyor Registration No. S1682  
(County Surveyor, Registered Land Surveyor, or other duly authorized official)

Office of Register of Deeds, County of Forest, I hereby certify that the within  
instrument was filed in this office for record on the 26th day of July, 19 83  
at 11:55 clock A. M.

Eugene Stasny  
(Register of Deeds)

By \_\_\_\_\_ Deputy

DOCUMENT NO. **123856**

Stock No. 26272

FORM 985

43413160020