

U.S. PUBLIC LAND SURVEY MONUMENT RECORD

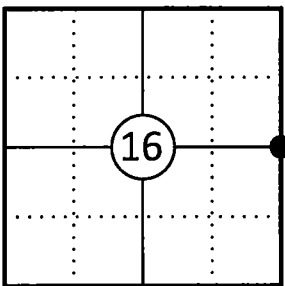
This form is intended and designed to fulfill all requirements of Wisconsin Administrative Code, Chapter A-E 7.08 U.S. Public Land Survey Monument Record (3) (a)(b)(c)(d)(e)(f)(g)(h)(i).

The coordinate value shown has been verified by at least one of the following methods: 1) Comparison to a previously GNSS determined published value; 2) The value is the average of two or more GNSS observations at a markedly different time; 3) One or more distances were measured back to the GNSS observed corner from temporary GNSS observed offset locations.

A-E 7.08(3)(a) Identity of the corner:

E 1/4 Corner Section 16	WISCRS - Forest County
Township 34 North	N: 519382.418 USFT
Range 13 East	E: 846075.408 USFT
Town of Nashville	Datum: NAD 83 (2011)
County of Forest	GNSS Method: WISCRS VRS Direct Observation

Corner ID: 43413162000



Original Corner Information:

Original Surveyor: J.L. Nowlin	Original B.T.'s: Hemlock 16" - S17°W, 15 links
Date of Survey: October 1865	Hemlock 8" - N10°E, 12 Links

A-E 7.08(3)(b)(e)(f)(g) Describe any record evidence, monument evidence, occupational evidence, testimonial evidence or any other material evidence considered. Describe any discrepancy between the corner restored and any previously established location. State whether the corners was restored through acceptance of obliterated evidence, a found perpetuated location, or determined by proportionate methods.

10/28/1963 Restoration of Lost Original Government Survey Corner by Neal Sperhake indicates he set a 1" dia. iron pipe with a Kimberly Clark Corp aluminum cap by single proportion and made two bearing trees. (See corner form for prior history and additional information).

05/09/2006 Michael A Trembl, Plat of Crawford Lake Estates indicates an existing 1" dia. iron pipe w/4" alum cap.

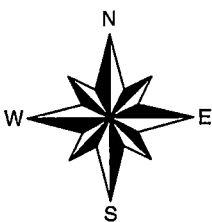
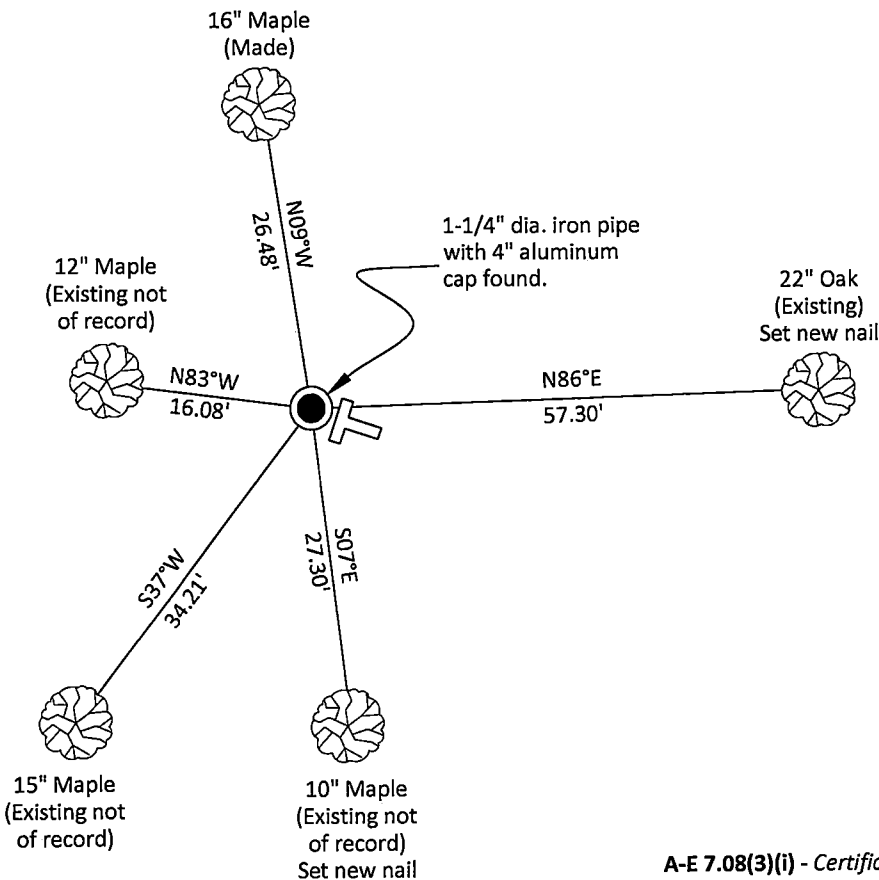
12/04/2012 Michael S. Hess, Forest Co Surveyor File # 341315-20121204 found an aluminum monument.

09/04/2023 Christopher M. Stebbins, Forest Co Surveyor File #341315-20230904 shows a found Kimberly Clark aluminum monument.

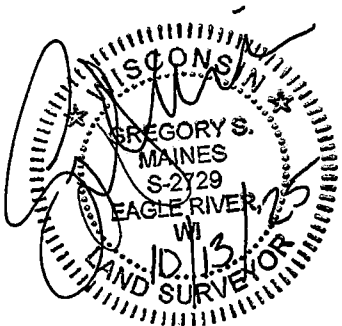
04/01/2025 I found and accepted a 1-1/4" dia. iron pipe with a Kimberly Clark Corp 4" dia. aluminum cap stamped to identify the corner 10" above grade at the corner location along with four existing bearing trees. I made one additional bearing tree to witness the corner as shown below.

A-E 7.08(3)(c)(d)(e)(h) Plan view of corner with ties to at least four witnesses. If in disagreement with previously established corner, show the distances between the two corners and also indicate the tie to the disputed corner. Distances and directions to other PLSS used as evidence or for proportioning.

Bearings given to the nearest second are Forest County Grid. All other bearings are magnetic



- * Vinyl "T" post 0.8' southeast of corner.
- * Distances to bearing trees are to nail in side with BT tag on tree.
- * Sketch is not to scale



A-E 7.08(3)(i) - Certification

I, Gregory S. Maines, Professional Land Surveyor No. 2729, hereby certify that the corner location on this record was referenced by me or under my direction and control and that this U.S. Public Land Survey Monument Record is complete to the best of my knowledge and belief.

State of Wisconsin

County of FOREST

ss. RESTORATION OF LOST ORIGINAL GOVERNMENT SURVEY CORNER.

I NEAL SPERHAKE, do hereby certify that on the TWENTY-EIGHTH day of OCTOBER, 1963, I established the WEST QUARTER SECTION CORNER OF SECTION 15, TOWNSHIP 34 NORTH, RANGE 13 EAST, Fourth Principal Meridian, as described hereon.

History: This corner was established during the original survey of this township, as noted in the original field notes for the original survey of T34N-R13E, 4th. p.m.

Description of monument and accessories I established to perpetuate the location of this corner:

At the point determined for the location of the corner I emplaced a:

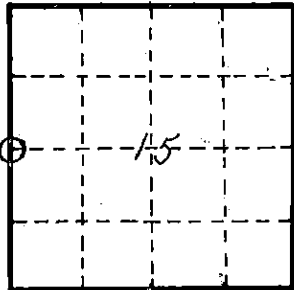
GALVANIZED IRON PIPE, THREE FEET LONG, ONE INCH IN DIAMETER, WITH ALUMINUM CAP DENOTED AS, "KIMBERLY-CLARK CORP. T34N $\frac{1}{4}$ BTWN. 15 & 16 R13E SPERHAKE RLS 463 10/28/63."

The pipe is witnessed by:

Maple 8 S 37°W 34 links. (SCRIBED $\frac{1}{4}$ S 16 NBT).

Oak 10 N 86°E 88 $\frac{1}{2}$ links. (SCRIBED $\frac{1}{4}$ S 15 NBT).

Description as to how corner was located: No evidence of original corner present. Thus, set by proportionate measurement. The section corners $\frac{1}{2}$ mile north and south have been previously established with a distance of 81.06 chains between them. Thus, set the quarter corner 40.53 chains from either corner and on a straight line between them.



O = Corner monument restored

Subscribed & sworn to before me this 25 day of Aug 1964

Anna Peterson

NOTARY PUBLIC, FOREST CO., WIS
COM. EXPIRES 10/31/65

88979

Resident witnesses _____

Dated at Grandon, Wisconsin, this 25 day of Aug, 19 64.

Signature Neal Sperhake

Title Registered Land Surveyor Registration No. 463

Office of Register of Deeds County of Forest
I hereby certify that the within instrument was filed in this office for record on the 25 day of Aug 19 64, and was filed in Book No. _____ Page No. _____ of County Records.

Surveyor's Seal

Signature Anna Peterson Title Reg. of Deeds

43413162000

Index No. 1-13