

U.S. PUBLIC LAND SURVEY MONUMENT RECORD

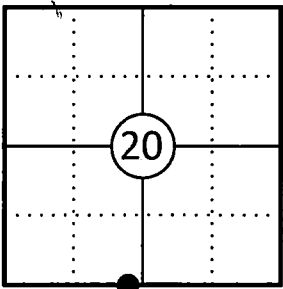
This form is intended and designed to fulfill all requirements of Wisconsin Administrative Code, Chapter A-E 7.08 U.S. Public Land Survey Monument Record (3) (a)(b)(c)(d)(e)(f)(g)(h)(i).

The coordinate value shown has been verified by at least one of the following methods: 1) Comparison to a previously GNSS determined published value; 2) The value is the average of two or more GNSS observations at a markedly different time; 3) One or more distances were measured back to the GNSS observed corner from temporary GNSS observed offset locations.

A-E 7.08(3)(a) Identity of the corner:

Meander Corner Section 20	WISCRS - Forest County
Township 34 North	N: 511546.372 USFT
Range 13 East	E: 837427.764 USFT
Town of Nashville	Datum: NAD 83 (2011)
County of Forest	GNSS Method: WISCORS VRS Direct Observation

Corner ID: 43413200022



Original Corner Information:

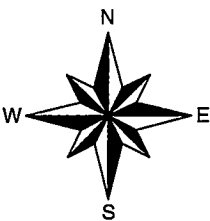
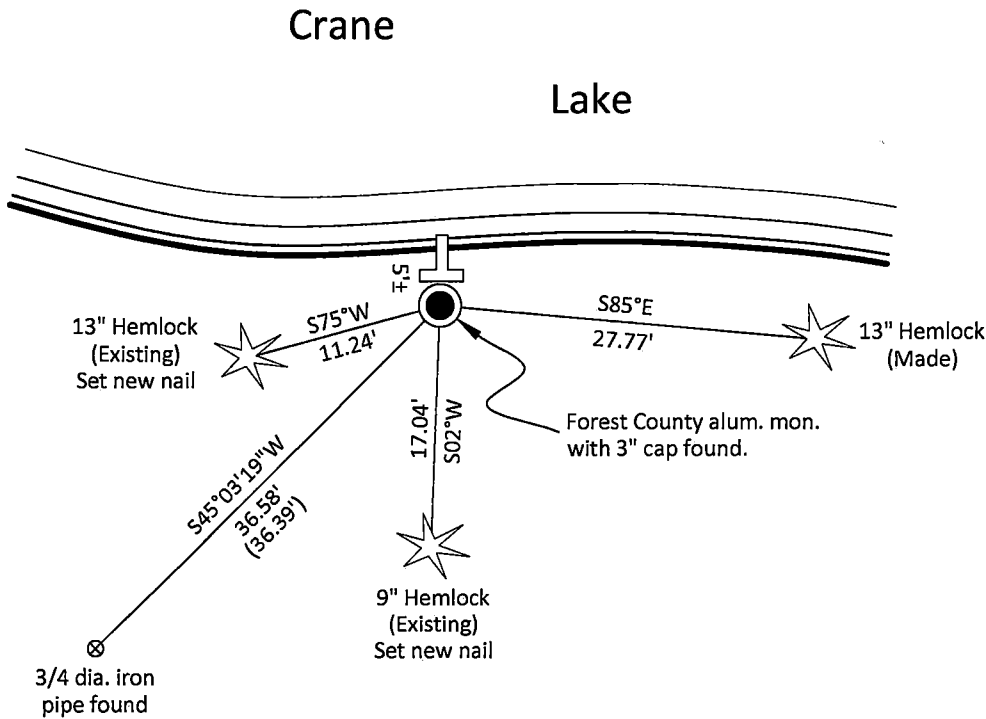
Original Surveyor: J.L. Nowlin	Original B.T.'s: W Pine 18" - N82°W, 14 links
Date of Survey: October 1865	Spruce 6" - S65°E, 8 links

A-E 7.08(3)(b)(e)(f)(g) Describe any record evidence, monument evidence, occupational evidence, testimonial evidence or any other material evidence considered. Describe any discrepancy between the corner restored and any previously established location. State whether the corners was restored through acceptance of obliterated evidence, a found perpetuated location, or determined by proportionate methods.

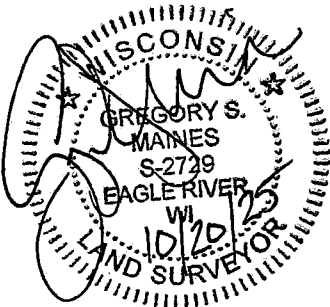
- 03/1959 John S. Kay Jr, Plat of Bartz Bay indicates existent M.C. and bearing trees - concrete filled drain pipe 4".
- 08/23/1963 R.W. Nordin, Forest County Certified Survey Map Vol. 1, Pg. 169 indicates a 1" dia. iron pipe on section line.
- 09/05/1996 Wayne G. Dobbratz, Forest County Certified Survey Map Vol. 5, Pg. 55 shows a found 4" dia. drain pipe.
- 11/15/1996 U.S. Public Land Survey Monument Record by Wayne G. Dobbratz indicates he found a conc. filled drain pipe and replaced with a 2" dia. aluminum monument with cap. (See corner form for prior history and additional information).
- 08/29/2003 Michael A. Trembl, Forest Co Surveyor File # 341329-20030829 found a 2" dia. aluminum pipe monument.
- 05/05/2025 I found and accepted a Forest County aluminum monument with a 3" dia. cap stamped to identify the corner 3" above grade at the corner location and two existing bearing trees and the iron pipe reference monument. The concrete block and frame boathouse is now gone. I made one additional bearing tree to witness the corner as shown below.

A-E 7.08(3)(c)(d)(e)(h) Plan view of corner with ties to at least four witnesses. If in disagreement with previously established corner, show the distances between the two corners and also indicate the tie to the disputed corner. Distances and directions to other PLSS used as evidence or for proportioning.

Bearings given to the nearest second are Forest County Grid.  
All other bearings are magnetic



- \* Vinyl "T" post 0.6' north of corner.
- \* Distances to bearing trees are to nail in side with no BT tag on trees due to residence nearby.
- \* Sketch is not to scale



A-E 7.08(3)(i) - Certification  
I, Gregory S. Maines, Professional Land Surveyor No. 2729, hereby certify that the corner location on this record was referenced by me or under my direction and control and that this U.S. Public Land Survey Monument Record is complete to the best of my knowledge and belief.

157334

# U.S. PUBLIC LAND SURVEY MONUMENT RECORD

(As Required By s. A-E 5.02, WI Adm. Code)

History of original corner establishment and subsequent restorations and description of any record, monument, occupational, testimonial or other evidence considered:

ORIGINAL SURVEY BY NOWLIN IN 1864, SET WOOD POST -B.Ts.  
W. PINE 18" N.82° W. 14 LKS., SPRUCE 6" S.65° E. 8 LKS.  
CORNER RESTABLISHED IN 1959, RECORDED PLAT OF BARTZ BAY-  
CONC. FILLED DRAIN PIPE.  
SAME CORNER USED IN 1976, RECORDED PLAT OF 2ND PLAT OF BARTZ BAY  
1996 W.G. DOBBRATZ, R.L.S. NO. S -973, FOUND CONC. FILLED DRAIN PIPE  
AS PER RECORDED PLATS AT MEANDER CORNER.

Corner was: (Check All That Apply)

- ☐ Restored through acceptance of an obliterated evidence location
- ☒ Restored through acceptance of a found perpetuated location
- ☐ Considered a lost corner and reestablished through lost corner proportionate methods (include a plan view drawing showing distances and directions to other Public Land Survey Corners used for proportioning and determining the corner location)
- ☐ Restored or reestablished in a location that differs from a previous restoration or reestablishment (include a plan view drawing and indicate what was set and/or found)

Describe the monument and accessories used to perpetuate the location of this corner. (include a plan view drawing and indicate what was set and/or found)

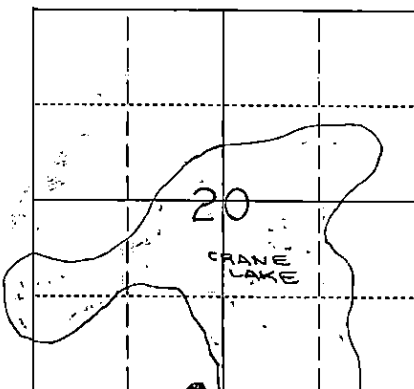
## WITNESS

1. DROVE 60 P. NAIL IN N'LY. FACE OF 10" PINE
2. FOUND 1" DIA. IRON PIPE
3. DROVE 60 P. NAIL IN E'LY FACE OF 6" PINE
4. NW CORNER OF CONC. BLOCK BOAT HSE.
5. SET 2" DIA. ALUMINUM MONUMENT WITH CAP STAMPED TO IDENTIFY CORNER.

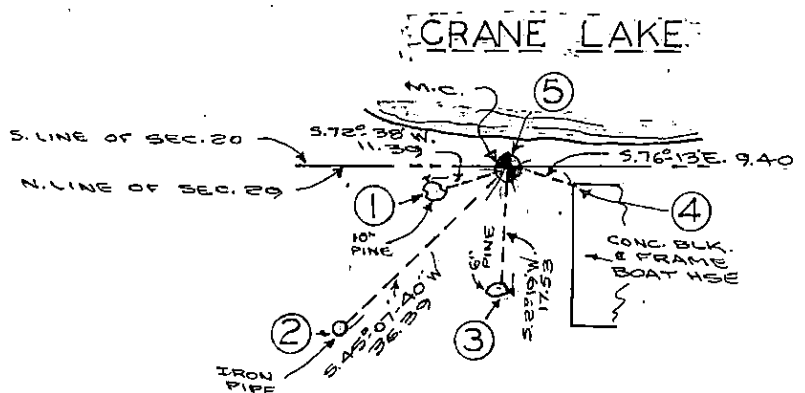
The WEST MEANDER CORNER

corner of Section 20 & 29,

T. 34 N., R. 13 E.,  
Fourth Principal Meridian,  
Marinette County, Wisconsin



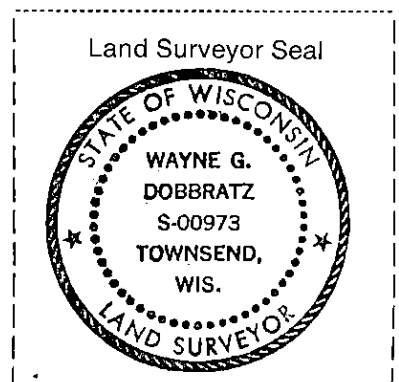
● = Location of Corner



REGISTER'S OFFICE  
Forest County, Wis.

Received for record this 15<sup>th</sup> day  
of January, A.D. 1996, at  
9:30 o'clock A.M. and recorded  
in Vol. Crane Restoration  
page 3413, R.1

*Wayne G. Dobbratz*  
Register of Deeds  
*Deputy*



I, WAYNE G. DOBBRATZ  
(type or print name) certify that the corner location shown on this record was determined by  
me or under my direction and control and that this U.S. Public Land Survey Monument Record  
is correct and complete to the best of my knowledge and belief.

*Wayne G. Dobbratz*  
Signature Date 11/15/96

Index No. R-7 W.M.C.

43413200022