

U.S. PUBLIC LAND SURVEY MONUMENT RECORD

This form is intended and designed to fulfill all requirements of Wisconsin Administrative Code, Chapter A-E 7.08 U.S. Public Land Survey Monument Record (3) (a)(b)(c)(d)(e)(f)(g)(h)(i).

The coordinate value shown has been verified by at least one of the following methods: 1) Comparison to a previously GNSS determined published value; 2) The value is the average of two or more GNSS observations at a markedly different time; 3) One or more distances were measured back to the GNSS observed corner from temporary GNSS observed offset locations.

A-E 7.08(3)(a) Identity of the corner:

S 1/4 Corner Section 21

Township 34 North

Range 13 East

Town of Nashville

County of Forest

WISCRS - Forest County

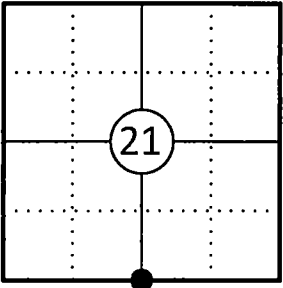
N: 511462.454 USFT

E: 843315.659 USFT

Datum: NAD 83 (2011)

GNSS Method: WISCORS VRS Direct Observation

Corner ID: 43413210020



Original Corner Information:

Original Surveyor: J.L. Nowlin

Date of Survey: October 1865

Original B.T.'s: Birch 12" - North, 16 links

Birch 12" - S18°E, 20 links

A-E 7.08(3)(b)(e)(f)(g) Describe any record evidence, monument evidence, occupational evidence, testimonial evidence or any other material evidence considered. Describe any discrepancy between the corner restored and any previously established location. State whether the corners was restored through acceptance of obliterated evidence, a found perpetuated location, or determined by proportionate methods.

- 11/21/1963

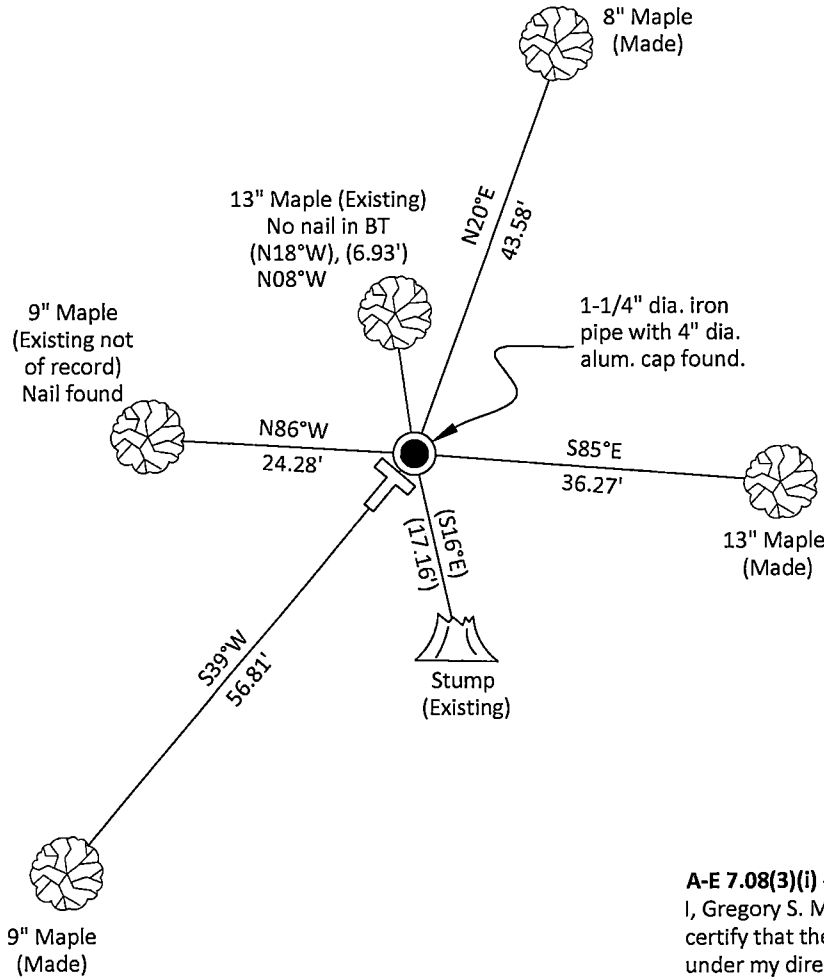
Restoration of Lost Original Government Survey Corner by Neal Sperhake indicates he set a 1" dia. iron pipe with a Kimberly Clark Corp aluminum cap by single proportion and made two bearing trees. (See corner form for prior history and additional information).
- 05/21/1985

Norman A. Harrison, Forest Co Surveyor File # 341328-19850424 indicates a 4" cap on 1" iron pipe monument set for Kimberly-Clark Corp. by Neal Sperhake. (This corner was used by Harrison on others surveys in the area).
- 12/19/1997

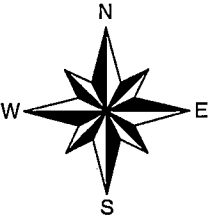
Robert O. Kamps, Forest Co Surveyor File # 341328-0000000 found a 1" dia. iron pipe w/4" cap. (This corner was used by Kamps other surveys in the area).
- 10/06/2025

I found and accepted a 1-1/4" dia. iron pipe with a Kimberly Clark Corp 4" dia. aluminum cap stamped to identify the corner 24" above grade at the corner location along with three bearing trees, one being a stump. I made four additional bearing trees to witness the corner as shown below.

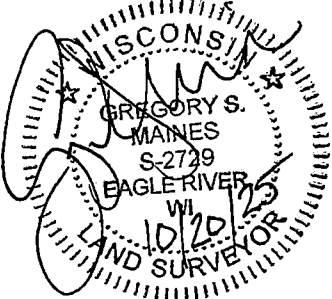
A-E 7.08(3)(c)(d)(e)(h) Plan view of corner with ties to at least four witnesses. If in disagreement with previously established corner, show the distances between the two corners and also indicate the tie to the disputed corner. Distances and directions to other PLSS used as evidence or for proportioning.



Bearings given to the nearest second are Forest County Grid. All other bearings are magnetic



- \* Vinyl "T" post 0.5' southwest of corner.
- \* Distances to bearing trees are to nail in side with BT tag on tree.
- \* Sketch is not to scale



A-E 7.08(3)(i) - Certification  
I, Gregory S. Maines, Professional Land Surveyor No. 2729, hereby certify that the corner location on this record was referenced by me or under my direction and control and that this U.S. Public Land Survey Monument Record is complete to the best of my knowledge and belief.

Index No.: R11

State of Wisconsin

County of FOREST

ss. RESTORATION OF LOST ORIGINAL GOVERNMENT SURVEY CORNER.

I NEAL SPERHAKE, do hereby certify that on the TWENTY-FIRST day of NOVEMBER, 1963, I established the NORTH QUARTER SECTION CORNER OF SECTION 28, TOWNSHIP 34 NORTH, RANGE 13 EAST, Fourth Principal Meridian, as described hereon.

History: This corner was established during the original survey of this township, as noted in the original field notes for the original survey of T34N-R13E, 4th. p.m.

Description of monument and accessories I established to perpetuate the location of this corner:

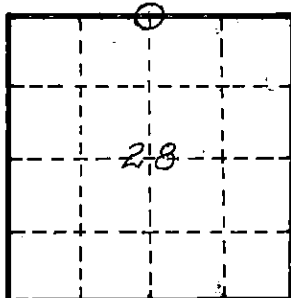
At the point determined for the location of the corner I emplaced a:

GALVANIZED IRON PIPE, THREE FEET LONG, ONE INCH IN DIAMETER, WITH ALUMINUM CAP DENOTED AS, "KIMBERLY-CLARK CORP. T34N  $\frac{1}{4}$  BTWN. 21 & 28 R13E SPERHAKE RLS 463 11/21/63."

The pipe is witnessed by:

Maple 5 N 18°W 10 $\frac{1}{2}$  links. (SCRIBED  $\frac{1}{4}$ S 21 NBT).  
Y. Birch 11 S 16°E 26 links. (SCRIBED  $\frac{1}{4}$ S 28 NBT).

Description as to how corner was located: No evidence of original corner present. Thus, set by proportionate measurement. The section corners  $\frac{1}{2}$  mile east and west have been previously established with a distance of 79.24 chains between them. Thus, set the quarter corner 39.62 chains from either corner and on a straight line between them.



O = Corner monument restored

Subscribed & sworn to before me this 25 day of Aug 1964

Anna Peterson  
NOTARY PUBLIC, FOREST CO., WIS  
COM. EXPIRES 10/31/65

88996

Resident witnesses \_\_\_\_\_

Dated at Grandon, Wisconsin, this 25 day of Aug, 1964.

Signature Neal Sperhake

Title Registered Land Surveyor Registration No. 463

Office of Reg. of Deeds County of Forest

I hereby certify that the within instrument was filed in this office for record on the 25 day of Aug 1964, and was filed in Book No. \_\_\_\_\_ Page No. \_\_\_\_\_ of County Records.

Surveyor's Seal

Signature Anna Peterson Title Reg. of Deeds

43413210020

Index No:

R-11