

FILED ON:
11/11/2025 04:02 PM
CORTNEY BRITTEN CLEEREMAN
REGISTER OF DEEDS
FOREST COUNTY WI
PAGES: 1

U.S. PUBLIC LAND SURVEY MONUMENT RECORD

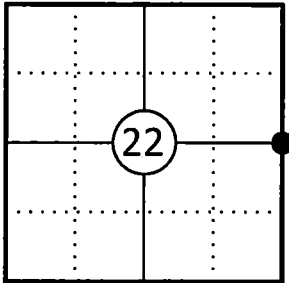
This form is intended and designed to fulfill all requirements of Wisconsin Administrative Code, Chapter A-E 7.08 U.S. Public Land Survey Monument Record (3) (a)(b)(c)(d)(e)(f)(g)(h)(i).

The coordinate value shown has been verified by at least one of the following methods: 1) Comparison to a previously GNSS determined published value; 2) The value is the average of two or more GNSS observations at a markedly different time; 3) One or more distances were measured back to the GNSS observed corner from temporary GNSS observed offset locations.

A-E 7.08(3)(a) Identity of the corner:

E 1/4 Corner Section 22	WISCRS - Forest County
Township 34 North	N: 514306.501 USFT
Range 13 East	E: 851457.252 USFT
Town of Nashville	Datum: NAD 83 (2011)
County of Forest	GNSS Method: WISCORS VRS Direct Observation

Corner ID: 43413222000



Original Corner Information:

Original Surveyor: J.L. Nowlin	Original B.T.'s: Hemlock 12" - N26°E, 25 links
Date of Survey: October 1865	Hemlock 20" - N65°W, 37 links

A-E 7.08(3)(b)(e)(f)(g) Describe any record evidence, monument evidence, occupational evidence, testimonial evidence or any other material evidence considered. Describe any discrepancy between the corner restored and any previously established location. State whether the corners was restored through acceptance of obliterated evidence, a found perpetuated location, or determined by proportionate methods.

11/15/1963 Restoration of Lost Original Government Survey Corner by Neal Sperhake indicates he set a 1" dia. iron pipe with a Kimberly Clark Corp aluminum cap by single proportionate measurement and made two bearing trees. (See corner form for prior history and additional information).

10/08/1998 Glen Barker, Forest Co Surveyor File # 341322-19981008 found a 1" dia. iron pipe w/4" alloy cap.

12/08/2000 Robert O. Kamps, Forest Co Surveyor File # 341322-20001208 and # 341323-20010308 found a 1" dia. iron pipe w/4" cap.

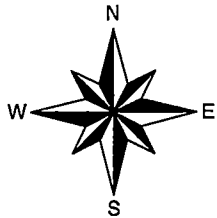
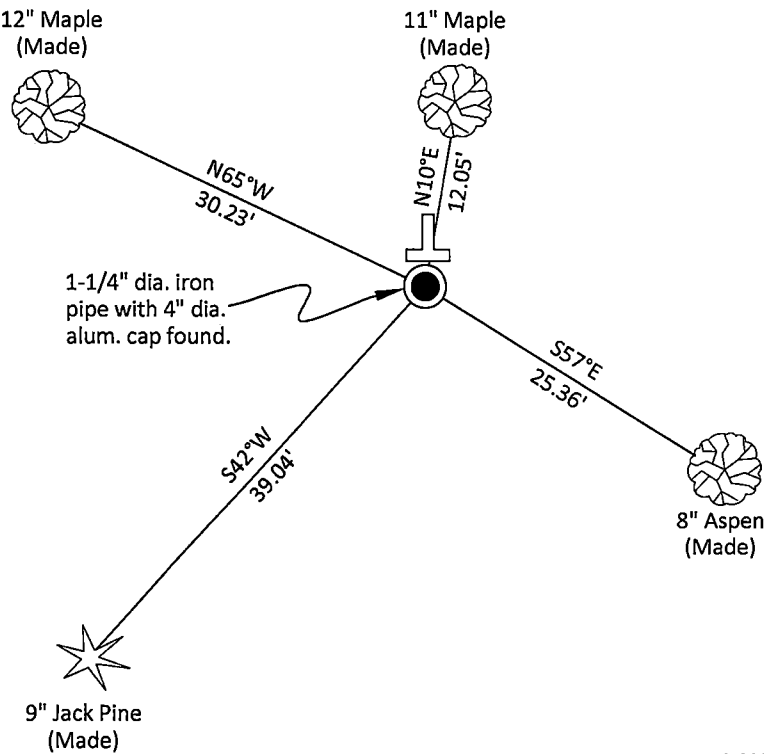
09/18/2009 Michael A. Trembl, Forest Co Surveyor File # 341323-20090918 indicates an existing 1" dia. iron pipe w/4" alum cap.

03/02/2021 Thomas J. McGuire, Forest County Certified Survey Map Vol. 10, Pg. 62 found a 1" iron pipe.

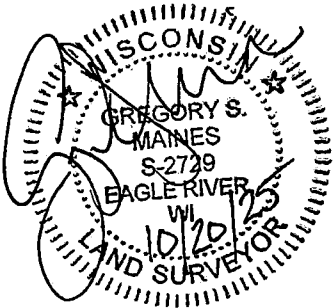
04/24/2025 I found and accepted a 1-1/4" dia. iron pipe with a Kimberly Clark Corp 4" dia. aluminum cap stamped to identify the corner 12" above corner location. I did not find any of Sperhake's bearing trees. I made four bearing trees to witness the corner as shown below.

A-E 7.08(3)(c)(d)(e)(h) Plan view of corner with ties to at least four witnesses. If in disagreement with previously established corner, show the distances between the two corners and also indicate the tie to the disputed corner. Distances and directions to other PLSS used as evidence or for proportioning.

Bearings given to the nearest second are Forest County Grid. All other bearings are magnetic



- * Vinyl "T" post 1.0' north of corner.
- * Distances to bearing trees are to nail in side with BT tag on tree.
- * Sketch is not to scale



A-E 7.08(3)(i) - Certification

I, Gregory S. Maines, Professional Land Surveyor No. 2729, hereby certify that the corner location on this record was referenced by me or under my direction and control and that this U.S. Public Land Survey Monument Record is complete to the best of my knowledge and belief.

Index No.:

P17

State of Wisconsin

County of FOREST

ss. RESTORATION OF LOST ORIGINAL GOVERNMENT SURVEY CORNER.

I NEAL SPERHAKE, do hereby certify that on the FIFTEENTH day of NOVEMBER, 1963, I established the WEST QUARTER SECTION CORNER OF SECTION 23, TOWNSHIP 34 NORTH, RANGE 13 EAST, Fourth Principal Meridian, as described hereon.

History: This corner was established during the original survey of this township, as noted in the original field notes for the original survey of T34N-R13E, 4th. p.m.

Description of monument and accessories I established to perpetuate the location of this corner:

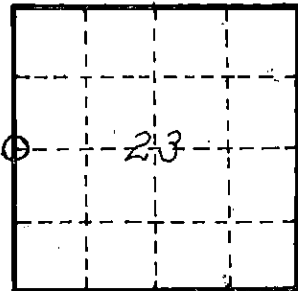
At the point determined for the location of the corner I emplaced a:

GALVANIZED IRON PIPE, THREE FEET LONG, ONE INCH IN DIAMETER, WITH ALUMINUM CAP DENOTED AS, "KIMBERLY-CLARK CORP. T34N $\frac{1}{4}$ BTWN. 22 & 23 R13E SPERHAKE RLS 463 11/15/63."

The pipe is witnessed by:

W. Birch 9 S 34° W $35\frac{1}{2}$ links. (SCRIBED $\frac{1}{4}$ S 22 NBT).
W. Birch 6 S 53° E 5 links. (SCRIBED $\frac{1}{4}$ S 23 NBT).

Description as to how corner was located: No evidence of original corner present. Thus, set by proportionate measurement. The section corner $\frac{1}{2}$ mile south and the witness corner to the section corner $\frac{1}{2}$ mile north have been previously established with a distance of 78.69 chains between them. Thus, set the quarter corner $39.34\frac{1}{2}$ chains from either corner and on a straight line between them.



O = Corner monument restored

Subscribed & sworn to before me this 25 day of Aug 1964

Anna Peterson
NOTARY PUBLIC, FOREST CO., WIS
COM. EXPIRES 10/31/65

88989

Resident witnesses _____

Dated at Crandon, Wisconsin, this 25 day of Aug, 1964.

Signature Neal Sperhake

Title Registered Land Surveyor Registration No. 463

Office of Reg. of Deeds County of Forest

I hereby certify that the within instrument was filed in this office for record on the 25 day of Aug 1964, and was filed in Book No. _____ Page No. _____ of County Records.

Surveyor's Seal

Signature Anna Peterson Title Reg. of Deeds

43413222000

Index No.

P-17
P-17