

U.S. PUBLIC LAND SURVEY MONUMENT RECORD

This form is intended and designed to fulfill all requirements of Wisconsin Administrative Code, Chapter A-E 7.08 U.S. Public Land Survey Monument Record (3) (a)(b)(c)(d)(e)(f)(g)(h)(i).

The coordinate value shown has been verified by at least one of the following methods: 1) Comparison to a previously GNSS determined published value; 2) The value is the average of two or more GNSS observations at a markedly different time; 3) One or more distances were measured back to the GNSS observed corner from temporary GNSS observed offset locations.

A-E 7.08(3)(a) Identity of the corner:

SE Corner Section 23

Township 34 North

Range 13 East

Town of Nashville

County of Forest

WISCRS - Forest County

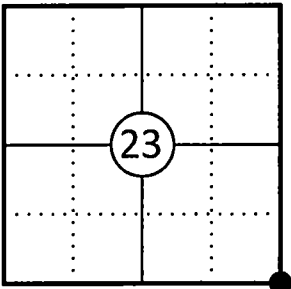
N: 511272.284 USFT

E: 856491.113 USFT

Datum: NAD 83 (2011)

GNSS Method: WISCORS VRS Direct Observation

Corner ID: 43413230000



Original Corner Information:

Original Surveyor: J.L. Nowlin

Date of Survey: October 1865

Original B.T.'s: Birch 20" - N13°W, 5 links

Birch 10" - N41°E, 45 links

A-E 7.08(3)(b)(e)(f)(g) Describe any record evidence, monument evidence, occupational evidence, testimonial evidence or any other material evidence considered. Describe any discrepancy between the corner restored and any previously established location. State whether the corners was restored through acceptance of obliterated evidence, a found perpetuated location, or determined by proportionate methods.

- 10/31/1963

Restoration of Lost Original Government Survey Corner by Neal Sperhake indicates he set a 1" dia. iron pipe with a Kimberly Clark Corp aluminum cap by local testimony and the railroad map and made three bearing trees. (See corner form for prior history and additional information).
- 11/15/1982

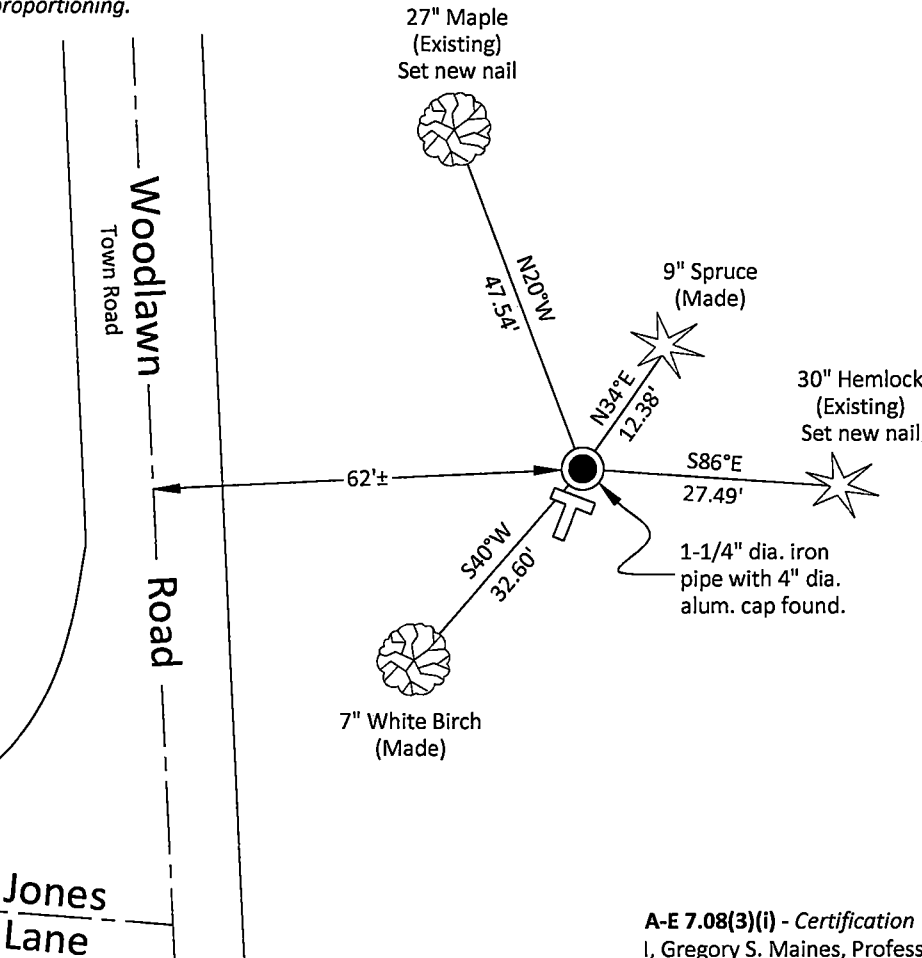
William F. Kelly, Forest County Certified Survey Map Vol. 3, Pg.96 found an aluminum capped monument.
- 10/22/2004

Michael A. Trembl, Forest Co Surveyor File # 341323-20041022 indicates an existing 1" dia. iron pipe w/4" alum cap.
- 05/23/2011

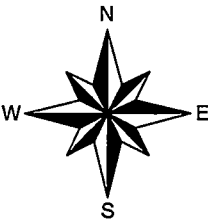
Timothy J. Rusch, Forest County Certified Survey Map Vol. 8, Pg.155 found an aluminum capped iron pipe.
- 10/06/2025

I found and accepted a 1-1/4" dia. iron pipe with a Kimberly Clark Corp 4" dia. aluminum cap stamped to identify the corner 12" above grade and two of Sperhake's bearing trees. I made two additional bearing trees to witness the corner as shown below.

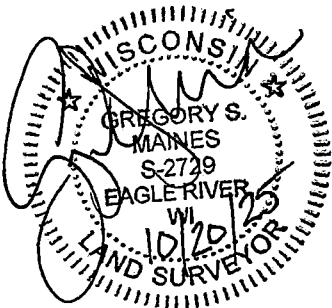
A-E 7.08(3)(c)(d)(e)(h) Plan view of corner with ties to at least four witnesses. If in disagreement with previously established corner, show the distances between the two corners and also indicate the tie to the disputed corner. Distances and directions to other PLSS used as evidence or for proportioning.



Bearings given to the nearest second are Forest County Grid. All other bearings are magnetic



- * Vinyl "T" post 0.8' southwest of corner.
- * Distances to bearing trees are to nail in side with BT tag on tree.
- * Sketch is not to scale



A-E 7.08(3)(i) - Certification
I, Gregory S. Maines, Professional Land Surveyor No. 2729, hereby certify that the corner location on this record was referenced by me or under my direction and control and that this U.S. Public Land Survey Monument Record is complete to the best of my knowledge and belief.

Index No.: R21

State of Wisconsin

County of FOREST

ss. RESTORATION OF LOST ORIGINAL GOVERNMENT SURVEY CORNER.

I NEAL SPERHAKE, do hereby certify that on the THIRTY-FIRST day of OCTOBER, 19 63, I established the NORTHWEST SECTION CORNER OF SECTION 25, TOWNSHIP 34 NORTH, RANGE 13 EAST, Fourth Principal Meridian, as described hereon.

History: This corner was established during the original survey of this township, as noted in the original field notes for the original survey of T34N-R13E, 4th. p.m.

Description of monument and accessories I established to perpetuate the location of this corner:

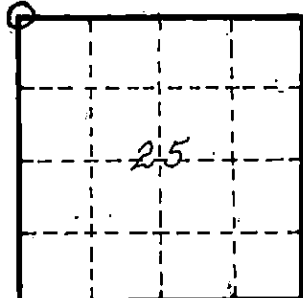
At the point determined for the location of the corner I emplaced a:

GALVANIZED IRON PIPE, THREE FEET LONG, ONE INCH IN DIAMETER, WITH ALUMINUM CAP DENOTED AS, "KIMBERLY-CLARK CORP. T34N 24, 23, 25, 26 R13E SPERHAKE RLS 463 10/31/63."

The pipe is witnessed by:

Maple 16 N 22°W 72 links. (SCRIBED S 23 NBT).
Hemlock 22 N 88°E 42 links. (SCRIBED S 24 NBT).
Elm 8 S 34°W 91 links. (SCRIBED S 26 NBT).

Description as to how corner was located: No evidence of the original corner present. The east-west position: The Soo Line Railroad survey map shows the location of the section corner to be 150 feet east of the center line of the railroad track. Mr. C. E. Jones, a 91 year old resident of Antigo, Wisconsin, operated a logging company in this area around 1900. He recalls the corner was in at that time and showed us, as best as he could recall, approximately where the corner was set, which was within a 25 foot radius of where the railroad survey map denotes it. There is an old blazed line running east and west from the spot that Jones claims was the corner. Therefore, I have accepted the old blazed line as marking the north-south position of the corner and the railroad map figure as marking the east-west position of the corner. Thus, I set the corner 150 feet east of the center line of the railroad track and on an east-west blazed line. It is 79.82 chains north to the corner of 13, 14, 23, 24; 79.07 chains east to the corner of sections 24 and 25 on the range line; 80.41 chains south to the corner of 25, 26, 35, 36 and 39.27 chains west to the quarter corner between sections 23 and 26.



O = Corner monument restored

Subscribed & sworn to before me this 25 day of Aug 1964

Anna Peterson
NOTARY PUBLIC, FOREST CO., WIS
COM. EXPIRES 10/31/65

Resident witnesses _____

Dated at Crandon, Wisconsin, this 25 day of Aug, 19 64.

Signature Neal Sperhake

Title Registered Land Surveyor Registration No. 463

Office of Reg. of Deeds County of Forest
I hereby certify that the within instrument was filed in this office for record on the 25 day of Aug 19 64, and was filed in Book No. _____ Page No. _____ of County Records.

Surveyor's Seal

Signature Anna Peterson Title Reg. of Deeds

43413 230000

88982

Index No.

P-21
R-21