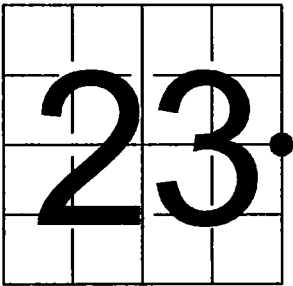


U. S. PUBLIC LAND SURVEY MONUMENT RECORD

NOTE: This form is intended and designed to fulfill all requirements of Wisconsin Administrative Code, Chapter A-E 7.08 U.S. Public Land Survey Monument Record (3) (a-i)

A-E 7.08(3)(a) Identity of corner:
East 1/4 Corner Section 23,
Township 34 North, Range 13 East
of the Fourth Principal Meridian,
Town of Nashville, Forest County,
Wisconsin

WISCRS - FOREST COUNTY
N: 513,892.570 USft (XXX,XXX.XXX)
E: 856,651.203 USft (XXX,XXX.XXX)
Datum: NAD83 (2011)
GNSS Method RTK
GNSS Control WISCRS VRS



The coordinate value shown has been verified by the average of two or more GPS observations at a markedly different time. Coordinates shown in parenthesis are previously published values.

A-E 7.08(3)(b)

Original Surveyor: James L. Nowlin - October 3, 1865 to October 18, 1865
Hemlock 10 - N 12° W, 15 Links, Hemlock 8 - S 62° E, 22 Links

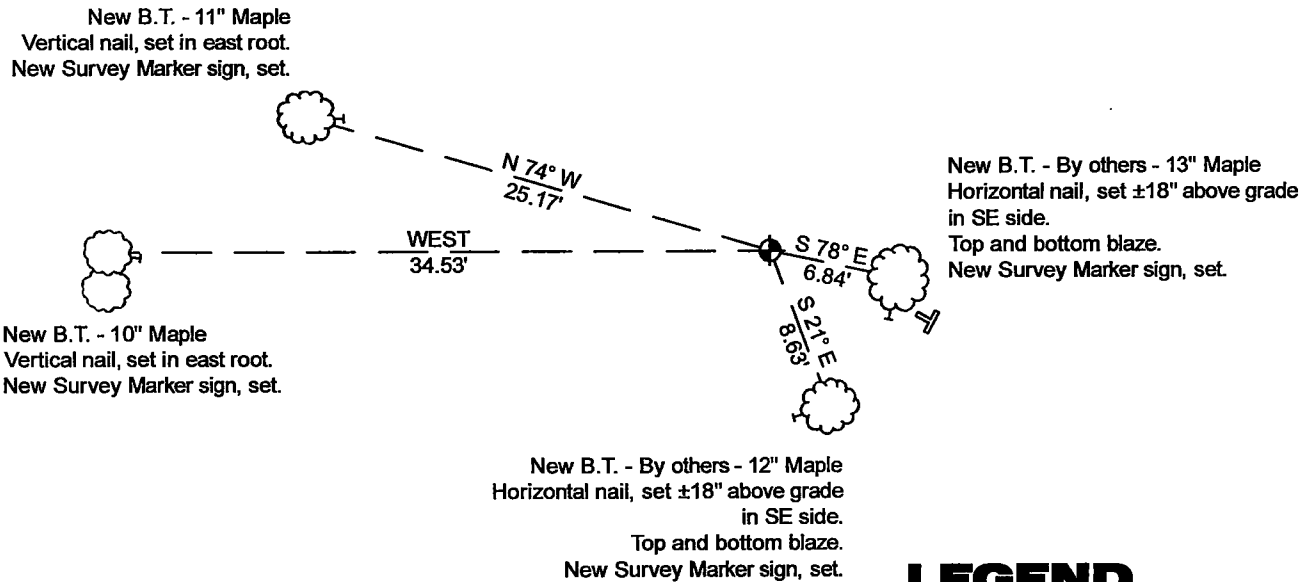
See previous Restoration of Lost Original Government Survey Corner - P-21 - August 25, 1964 - Surveyor 463 - Neal Sperhake - THENCE:

- October 22, 2004, - Surveyor 2197 - Michael A. Trembl - indicates this position as "1" iron pipe W/4" alum. cap" on county record Map #341323-20041022.
- September 18, 2009, - Surveyor 2197 - Michael A. Trembl - indicates this position as "1" iron pipe W/4" alum. cap" on county record Map #341323-20090918.

September 24, 2024 - I found a 1.3" diameter galvanized iron pipe monument with a 4" diameter aluminum cap stamped to identify the corner location. The monument extends ±12" above grade and is in a pile of rocks. I established 4 new reference monuments as shown below.

A-E 7.08(3)(c)(d) Plan view of corner with references to at least 4 witness monuments.

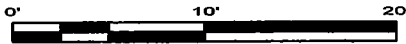
Bearings listed to the nearest second
are referenced to the:
Wisconsin County Coordinate
Reference System,
Forest County Zone.
All other bearings are magnetic.



LEGEND

Monument sizes = outside diameter measurements.

- ⊕ This Corner
- └ Vinyl T-post, set ±9.2 feet SE of corner
- Galvanized nail, set or nail found as shown



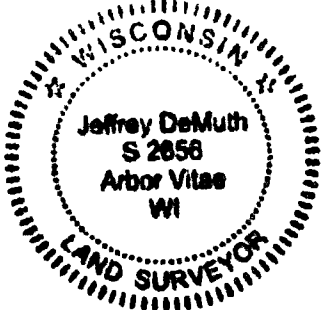
A-E 7.08(3)(e) 1865 Surveyor set a post, 1964 Surveyor set a 1" diameter galvanized iron pipe with an aluminum Kimberly - Clark Cap, 2004 & 2009 Surveyor found a 1" iron pipe with a 4" aluminum cap. I found a 1.3" diameter galvanized iron pipe monument with a 4" diameter aluminum cap stamped to identify the corner location in 2024.
A-E 7.08(3)(f) I accept this monument in good faith as a FOUND PERPETUATED LOCATION of the corner.
A-E 7.08(3)(g)(h) This corner was not determined through lost-corner-proportionate methods.

A-E 7.08(3)(i) I, Jeffrey L. DeMuth, Professional Land Surveyor No. S-2656, hereby certify that the corner location on this record was determined by me or under my direction and control, and that this U.S. Public Land Survey Monument Record is correct and complete to the best of my knowledge, and belief.

SIGNATURE

December 30, 2024

DATE



43413232000

43413232000

P21

State of Wisconsin

County of FOREST

ss. RESTORATION OF LOST ORIGINAL GOVERNMENT SURVEY CORNER.

I NEAL SPERHAKE, do hereby certify that on the FIRST day of NOVEMBER, 1963, I established the WEST QUARTER SECTION CORNER OF SECTION 24, TOWNSHIP 34 NORTH, RANGE 13 EAST, Fourth Principal Meridian, as described hereon.

History: This corner was established during the original survey of this township, as noted in the original field notes for the original survey of T34N-R13E, 4th. p.m.

Description of monument and accessories I established to perpetuate the location of this corner:

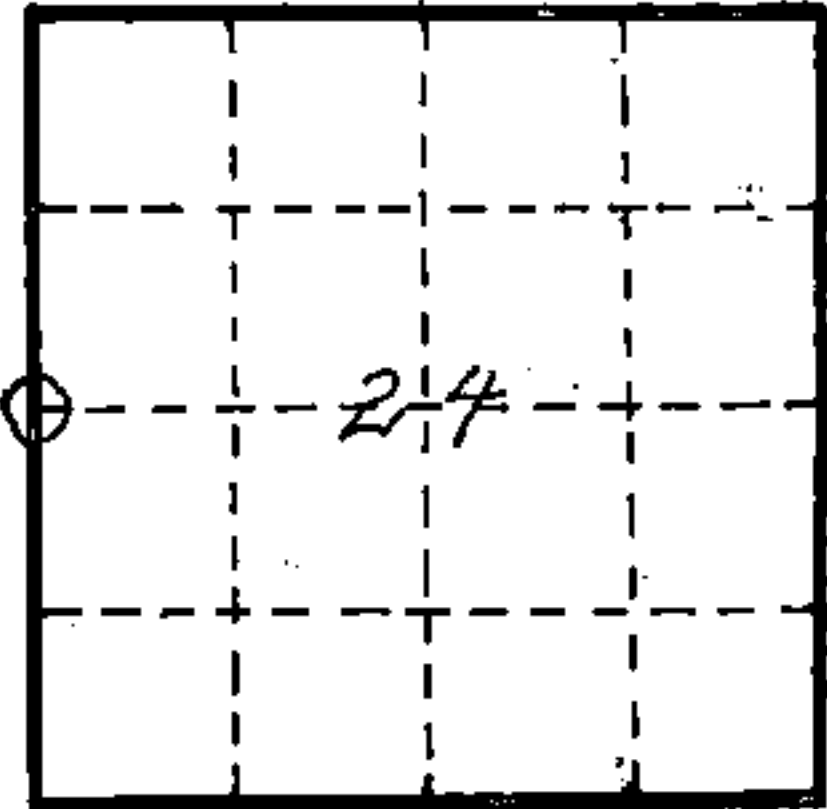
At the point determined for the location of the corner I emplaced a:

GALVANIZED IRON PIPE, THREE FEET LONG, ONE INCH IN DIAMETER, WITH ALUMINUM CAP DENOTED AS, "KIMBERLY-CLARK CORP. T34N 1/4 BTWN. 23 & 24 R13 E SPERHAKE RLS 463 11/1/63."

The pipe is witnessed by:

Maple 6 N 20°E 40 links. (SCRIBED 1/4 S 24 NBT).
Elm 6 S 75°W 28 1/2 links. (SCRIBED 1/4 S 23 NBT).

Description as to how corner was located: No evidence of original corner present. The section corner 1/2 mile south and the quarter corner 1 mile north have been previously established with a distance of 119.64 chains between them. Proportionately, therefore, the quarter corner should be 39.88 chains north of the section corner. A soo line railroad survey map shows the location of the quarter corner to be 425 feet east of the center line of the railroad track. 12 links north and 1 link west of the above stated position is the junction of two old fences and part of an old squared post in the ground beside the fence post. I believe the old post and fence junction mark the site of the original quarter corner and therefore I have accepted it and marked it as noted above. It is 40.00 chains south to the section corner common to sections 23, 24, 25 and 26 and 39.82 chains north to the corner of 13, 14, 23, 24.



0 = Corner monument restored

Subscribed & sworn to before me this 25 day of Aug 1964

Anna Peterson

NOTARY PUBLIC, FOREST CO., WIS.
COM. EXPIRES 10/31/65

Resident witnesses _____

Dated at Crandon, Wisconsin, this 25 day of Aug, 19 64.

Signature Neal Sperhake

Title Registered Land Surveyor Registration No. 463

Office of Reg. of Deeds County of Forest,
I hereby certify that the within instrument was filed in this office for record on the 25 day of Aug 19 64, and was filed in Book No. _____ Page No. _____ of County Records.

Surveyor's Seal

Signature Anna Peterson Title Reg. of Deeds

43413232000

88986

Index No.

P-221
P-221