

U.S. PUBLIC LAND SURVEY MONUMENT RECORD

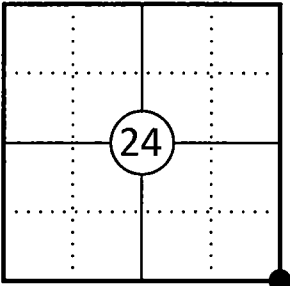
This form is intended and designed to fulfill all requirements of Wisconsin Administrative Code, Chapter A-E 7.08 U.S. Public Land Survey Monument Record (3) (a)(b)(c)(d)(e)(f)(g)(h)(i).

The coordinate value shown has been verified by at least one of the following methods: 1) Comparison to a previously GNSS determined published value; 2) The value is the average of two or more GNSS observations at a markedly different time; 3) One or more distances were measured back to the GNSS observed corner from temporary GNSS observed offset locations.

A-E 7.08(3)(a) Identity of the corner:

SE Corner Section 24	WISCRS - Forest County
Township 34 North	N: 511082.085 USFT
Range 13 East	E: 861619.424 USFT
Town of Nashville	Datum: NAD 83 (2011)
County of Forest	GNSS Method: WISCORS VRS Direct Observation

Corner ID: 43413240000



Original Corner Information:

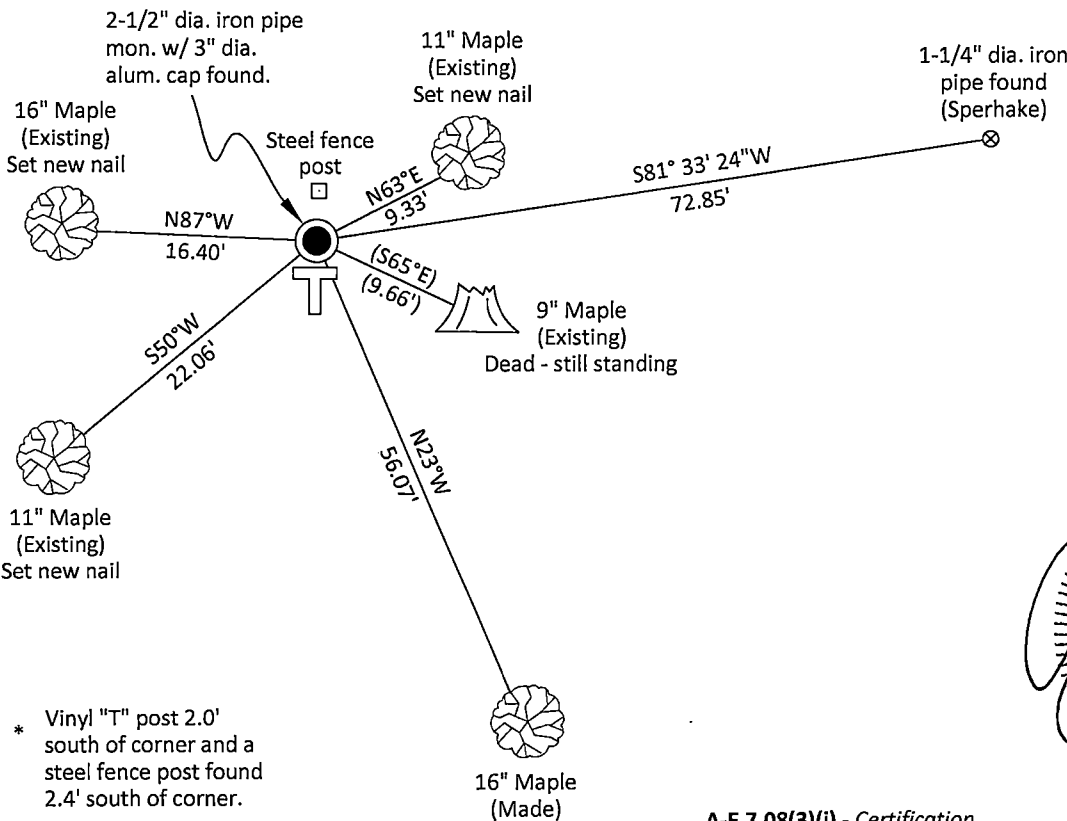
Original Surveyor: Alfred Millard	Original B.T.'s: Lynn 15" - N30°W, 31 links
Date of Survey: August 1857	Y. Birch 15" - N40°W, 43 links
	Sugar 12" - S22°E, 25 links
	Hemlock 48" - N40°E, 31 links

A-E 7.08(3)(b)(e)(f)(g) Describe any record evidence, monument evidence, occupational evidence, testimonial evidence or any other material evidence considered. Describe any discrepancy between the corner restored and any previously established location. State whether the corners was restored through acceptance of obliterated evidence, a found perpetuated location, or determined by proportionate methods.

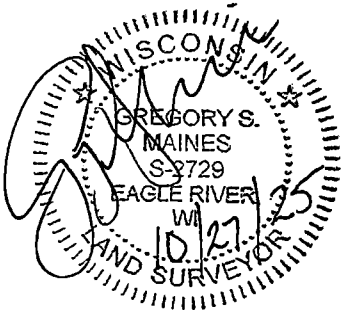
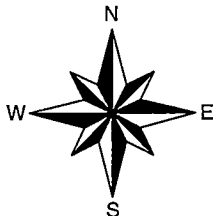
- 04/11/1963 Restoration of Lost Original Government Survey Corner by Neal Sperhake indicates he set a 1" dia. iron pipe with a Kimberly Clark Corp aluminum cap by proportionate measurement and made four bearing trees. (See corner form for prior history and additional information).
- 08/31/1982 Robert H. Winat, Forest Co Surveyor File # 341430-19820831 recovered 1" dia. iron pipe w/4" aluminum tablet.
- 03/21/1984 U.S. Public Land Survey Monument Record by Milo E. Stefan indicates he found remains of original bearing trees and a fallen post and post point. He set a 2" dia. aluminum monument and made four new bearing trees. He notes the Kimberly Clark monument set by Sperhake bears N81°24'33"E, 72.80 feet. He made four new bearing trees and set a steel sign post to the north. (See corner form for prior history and additional information along with Forest Co. Surveyor File # 341430-19841228).
- 10/27/2025 I found and accepted a 2-1/2" dia. iron pipe with a 3" dia. aluminum cap stamped to identify the corner 8" above grade in a mound of stones along with four existing bearing trees, one of which was dead and still standing. We also found a 1-1/4" dia. iron pipe in a mound of stones set by Sperhake to the northeast. I used the three existing living bearing trees and made one new bearing tree to witness the corner as shown below.

A-E 7.08(3)(c)(d)(e)(h) Plan view of corner with ties to at least four witnesses. If in disagreement with previously established corner, show the distances between the two corners and also indicate the tie to the disputed corner. Distances and directions to other PLSS used as evidence or for proportioning.

Bearings given to the nearest second are Forest County Grid. All other bearings are magnetic



- * Vinyl "T" post 2.0' south of corner and a steel fence post found 2.4' south of corner.
- * Distances to bearing trees are to nail in side with BT tag on tree.
- * Sketch is not to scale



A-E 7.08(3)(i) - Certification
I, Gregory S. Maines, Professional Land Surveyor No. 2729, hereby certify that the corner location on this record was referenced by me or under my direction and control and that this U.S. Public Land Survey Monument Record is complete to the best of my knowledge and belief.

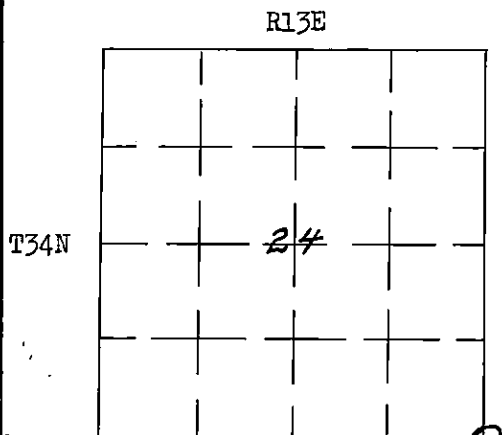
86978

STATE OF WISCONSIN

I NEAL SPERHAKE, do hereby certify that on the FIFTEENTH day of NOVEMBER, 1962, I restored the SOUTHEAST SECTION CORNER of SECTION 24, TOWNSHIP 34 NORTH, RANGE 13 EAST, Fourth Principal Meridian, as described hereon.

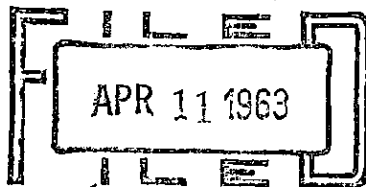
Resident Witnesses:

Richard Piontek - Waubeno
David Pichotta - Waubeno



O = Corner Monument Restored

REGISTER'S OFFICE
FOREST COUNTY, WIS.



At 2 o'clock P. M.
Karl A. Unger Register of Deeds

RESTORATION OF LOST ORIGINAL GOVERNMENT SURVEY CORNER

Index No.

R-25
R25

History of original corner establishment:

This corner can also be described as: THE SECTION CORNER COMMON TO SECTIONS 24 AND 25, T34N-R13E, AND, 19 AND 30, T34N-R14E, 4TH. P.M.

This corner was established during the original survey of this township, as noted in the Original Field Notes for the Original Survey of T34N-R13E, 4th p.m.

Description of monument and accessories I established to perpetuate the location of this corner.

At the point determined for the location of the corner I emplaced a:

"GALVANIZED IRON PIPE, THREE FEET LONG, ONE INCH IN DIAMETER, WITH AN ALUMINUM CAP DENOTED AS, 'KIMBERLY-CLARK CORP T34N 24, 25, 19, 30, R13-14E SPERHAKE RLS 463 11-15-62".

The pipe is witnessed by:

Elm 5 N30°W 21 links. (Scribed S24 NBT).
 Elm 7 N12°E 13½ links. (Scribed S19 NBT).
 Maple 5 S46°E 8½ links. (Scribed S30 NBT).
 Elm 5 S64°W 23 links. (Scribed S25 NBT).

Description as to how corner was located:

No evidence of original corner present. Thus, set by proportionate measurement between the previously established corner of 13, 24, 18, 19, and the town corner of 34-13, 34-14, 33-13 and 33-14, (or, the corner of sections 36, 31, 1, 6). The distance between these corners is 240.75 chains. Thus, I set the corner of 24, 25, 19, 30, 160.50 chains north of the township corner, and on a straight line between the known corners.

Dated at Crandon, Wis., the 11th day of April, 19 63Signature Neal Sperhake Title Registered Land Surveyor Registration No. S-463I, Neal Sperhake, County of Forest, I hereby certify that the withininstrument was signed and sworn to on the 11th day of April, 19 63at xxxxxx xx

Adeline De Noble
 Notary (Register of Deeds) Public
 Forest County, Wisconsin My Commission Expires

By My commission expires February 6, 1966 Deputy

Surveyor's Seal

43413240000

SEE AT T34 R14

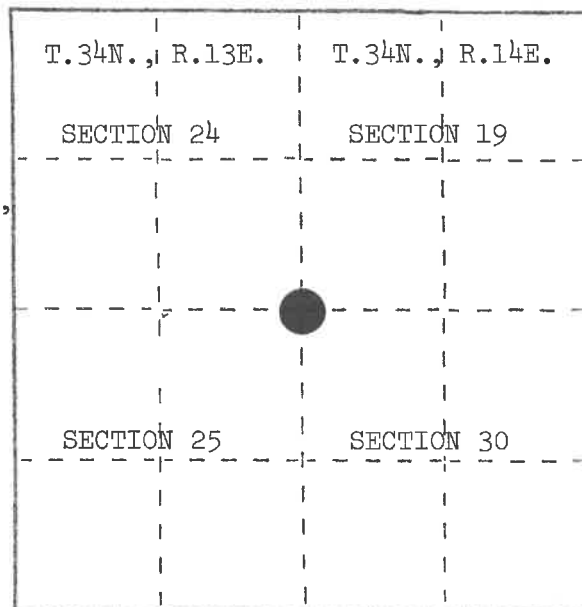
U. S. PUBLIC LAND SURVEY MONUMENT RECORD

INSTRUCTIONS: This record shall show the location of the corner and shall include all of the following nine elements (a through i).

- (a) Identify the corner by reference to the U.S. public land survey system.

○ = Corner monument restored.

Section corner common to Sections 19 and 30, T.34N., R.14E., and Sections 24 and 25, T.34N., R.13E.



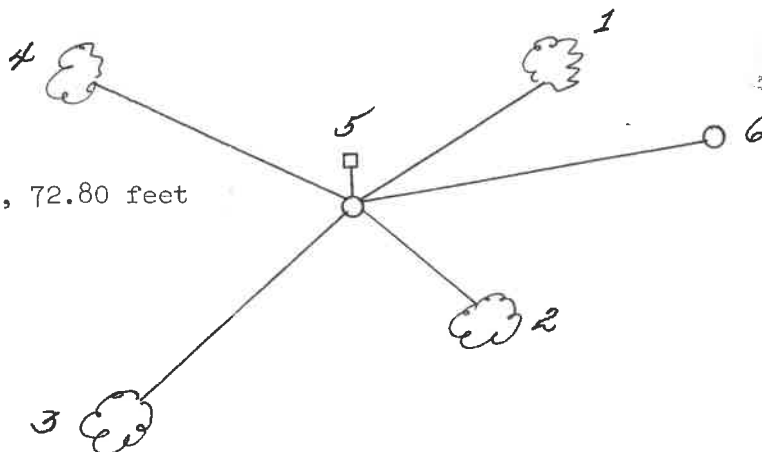
- (b) Describe any record evidence, monument evidence, occupational evidence, testimonial evidence or any other material evidence you considered, and whether the monument was found or placed.

Found fallen post and post point supported by remains of the original bearing trees from Alfred Millard's survey of 1857.

- (c) In the plan view drawing below, provide reference ties to at least 4 witness monuments, or, if the location is within a municipality, to at least 2 witness monuments. (Witness monuments shall be made of concrete, natural stone, iron or other equally durable material.) Describe witness monuments.

- (d) Show a plan view drawing depicting the relevant monuments and reference ties which is sufficient in detail to enable accurate relocation of the corner monument if the corner monument is disturbed. Indicate north.

1. Sugar Maple, 6", N.60°E., 9.41 feet
2. Sugar Maple, 6", S.60°E., 9.66 feet
3. Sugar Maple, 6", S.50°W., 22.27 feet
4. Sugar Maple, 8", N.80°W., 16.55 feet
5. Steel Sign Post, North, 2.80 feet
6. Kimberly Clark Monument, N.81°24'33"E., 72.80 feet



REGISTER'S OFFICE }
Forest County, Wis. }

Received for record this... 16th day
of... January... A.D., 1985 at
... 2:30... P... M. and

recorded in Vol... **CORNER RESTORATIONS**
on page R-1...

Paul Aschenbrenner
REGISTER

43413240000

ALSO SEE R25 T34 R13

R-1

R-1

- (e) Describe any material discrepancy between the location of the corner as restored or reestablished and the location of that corner as previously restored or reestablished by distance and direction. Show the discrepancy on the plan view drawing under (d), above. Show the distances between the corner as previously restored or reestablished and (1) the corner as restored or reestablished, and (2) to at least 2 of the witness monuments shown on the drawing in (d), above.

This corner is restored from the remains of the original bearing trees of Alfred Millard's survey of 1857. Neal Sperhake's monument bears N.81°24'33"E., 72.80 feet.

- (f) Was the corner restored through acceptance of (1) an obliterated evidence location, or, (2) a found perpetuated location?

An obliterated evidence location.

- (g&h) Was the corner reestablished through lost corner proportionate methods? If so, show the method, including the directions and distances to other public land survey corners used as evidence or used for proportioning in determining the corner location?

- (i) I, Milo E. Stefan
(type or print name) certify that the corner location shown on this record was determined by me or under my direction and control and that this U.S. Public Land Survey Monument Record is correct and complete to the best of my knowledge and belief.

Milo E. Stefan
Signature

3/21/84
Date

