

U. S. PUBLIC LAND SURVEY MONUMENT RECORD

NOTE: This form is intended and designed to fulfill all requirements of Wisconsin Administrative Code, Chapter A-E 7.08 U.S. Public Land Survey Monument Record (3) (a-1)

A-E 7.08(3)(a) Identity of corner:
East 1/4 Corner Section 24,
Township 34 North, Range 13 East
of the Fourth Principal Meridian,
Town of Nashville, Forest County,
Wisconsin

WISCRS - FOREST COUNTY
N: 513,742.477 USft (XXX,XXX.XXX)
E: 861,699.190 USft (XXX,XXX.XXX)
Datum: NAD83 (2011)
GNSS Method RTK
GNSS Control WISCORS VRS



The coordinate value shown has been verified by the average of two or more GPS observations at a markedly different time. Coordinates shown in parenthesis are previously published values.

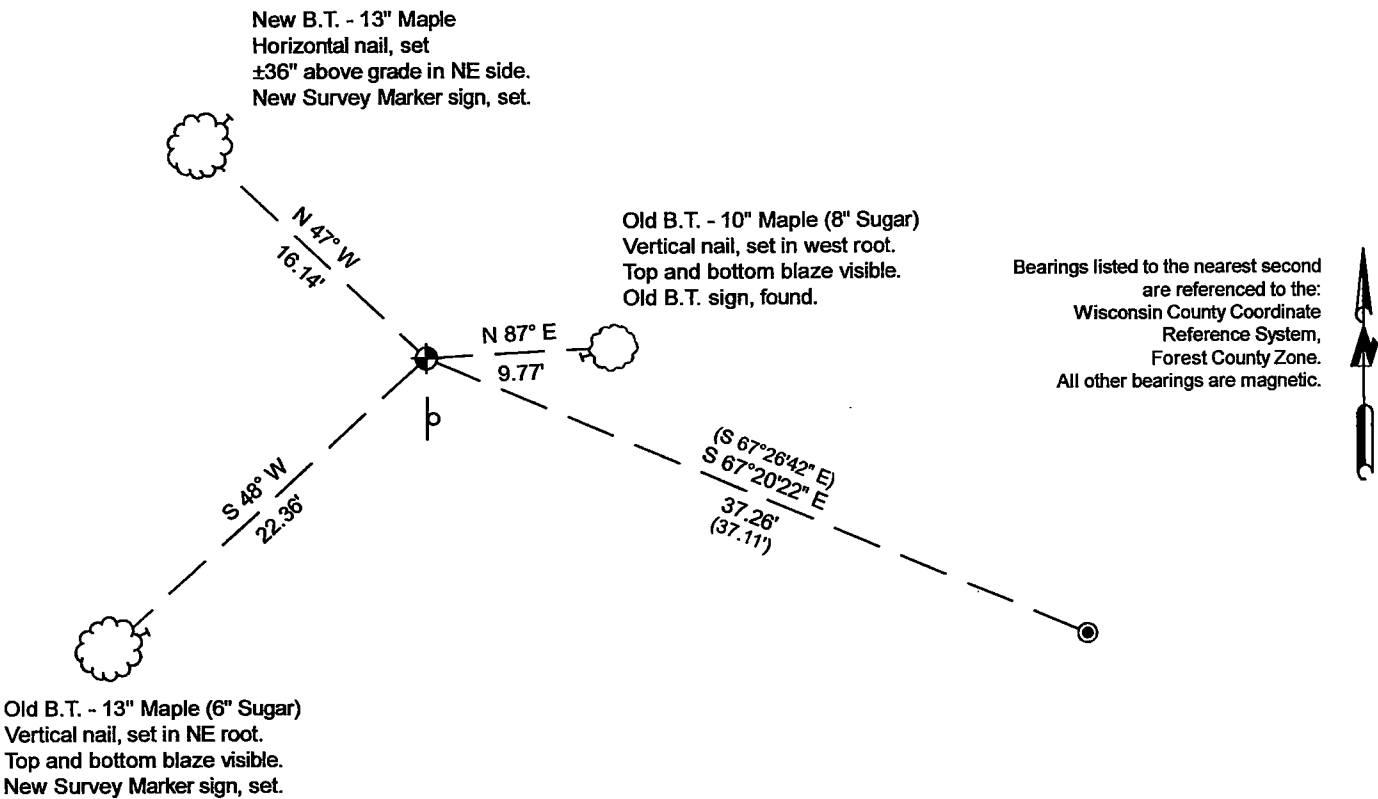
A-E 7.08(3)(b)

Original Surveyor: Alfred Millard - August 1857
Hemlock 15 - N 78° W, 5 Links, Hemlock 15 - East, 34 Links

See previous U.S.Public Land Survey Monument Record - P1- March 21, 1984 - Surveyor 1558 - Milo E. Stefan - THENCE:

September 17, 2024 - I found a 2.25" diameter aluminum pipe monument with a 3.25" diameter aluminum cap stamped to identify the corner location. The monument extends ±12" above grade and is in a pile of rocks. I also found 2 of Stefan's bearing trees alive and in good condition and a 1.3" diameter iron pipe. I established 1 new reference monuments as shown below.

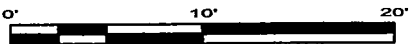
A-E 7.08(3)(c)(d) Plan view of corner with references to at least 4 witness monuments.



LEGEND

Monument sizes = outside diameter measurements.

- ⊕ This Corner
- Steel post, found ±2.6 feet south of corner
- 1.3" diameter iron pipe, found
- ⊖ Galvanized nail, set or nail found as shown



A-E 7.08(3)(e) 1857 Surveyor set a post, 1984 Surveyor set a 2" diameter aluminum monument. I found a 2.25" diameter aluminum pipe monument with a 3.25" diameter aluminum cap stamped to identify the corner location in 2024.

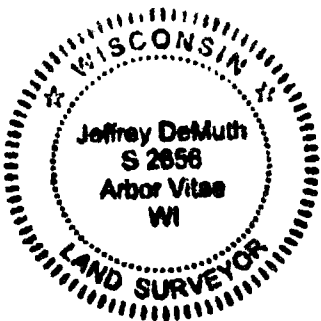
A-E 7.08(3)(f) I accept this monument in good faith as a FOUND PERPETUATED LOCATION of the corner.
A-E 7.08(3)(g)(h) This corner was not determined through lost-corner-proportionate methods.

A-E 7.08(3)(i) I, Jeffrey L. DeMuth, Professional Land Surveyor No. S-2656, hereby certify that the corner location on this record was determined by me or under my direction and control, and that this U.S. Public Land Survey Monument Record is correct and complete to the best of my knowledge, and belief.

SIGNATURE

December 30, 2024

DATE



43413242000

43413242000

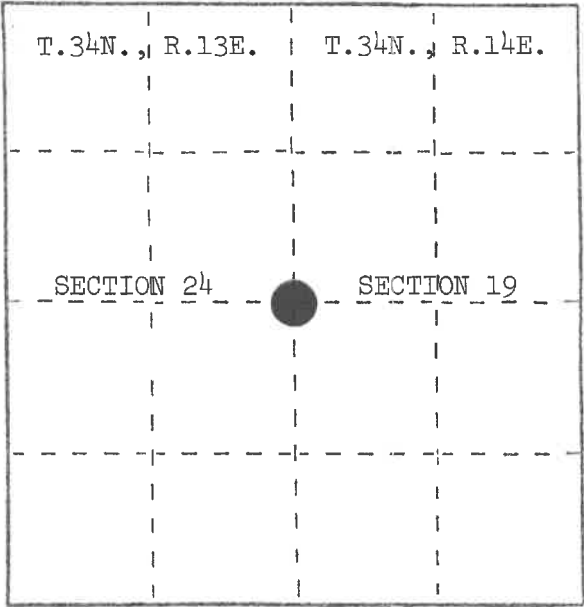
P1

U. S. PUBLIC LAND SURVEY MONUMENT RECORD

INSTRUCTIONS: This record shall show the location of the corner and shall include all of the following nine elements (a through i).

- (a) Identify the corner by reference to the U.S. public land survey system.
○ = Corner monument restored.

Quarter corner to Sections 19 and 24, T.34N., R.13E., and R.14E.



- (b) Describe any record evidence, monument evidence, occupational evidence, testimonial evidence or any other material evidence you considered, and whether the monument was found or placed.

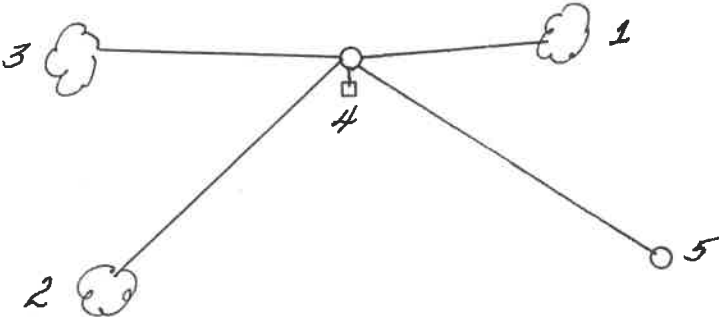
Corner position restored from remains of the original bearing trees and post hole, as placed by Alfred Millard in 1857.

- (c) In the plan view drawing below, provide reference ties to at least 4 witness monuments, or, if the location is within a municipality, to at least 2 witness monuments. (Witness monuments shall be made of concrete, natural stone, iron or other equally durable material.)
Describe witness monuments.

- (d) Show a plan view drawing depicting the relevant monuments and reference ties which is sufficient in detail to enable accurate relocation of the corner monument if the corner monument is disturbed. Indicate north.

- 1. Sugar Maple, 8", N.87°E., 10.50 feet
- 2. Sugar Maple, 6", S.48°W., 23.16 feet
- 3. Sugar Maple, 5", N.89°W., 13.56 feet
- 4. Steel Sign Post, South, 1.20 feet
- 5. Kimberly Clark Monument, S.67°26'42"E., 37.11 feet

REGISTER'S OFFICE }
Forest County, Wis. }
Received for record this 16th day
of January, 1985, at
2:30 o'clock P.M. and
recorded in Vol. CORNER RESTORATIONS
on page P-1
Paul Aschenbrenner
REGISTER



(e) Describe any material discrepancy between the location of the corner as restored or reestablished and the location of that corner as previously restored or reestablished by distance and direction. Show the discrepancy on the plan view drawing under (d), above. Show the distances between the corner as previously restored or reestablished and (1) the corner as restored or reestablished, and (2) to at least 2 of the witness monuments shown on the drawing in (d), above.

(f) Was the corner restored through acceptance of (1) an obliterated evidence location, or, (2) a found perpetuated location?

(g&h) Was the corner reestablished through lost corner proportionate methods? If so, show the method, including the directions and distances to other public land survey corners used as evidence or used for proportioning in determining the corner location?

(i) I, Milo E. Stefan
(type or print name) certify that the corner location shown on this record was determined by me or under my direction and control and that this U.S. Public Land Survey Monument Record is correct and complete to the best of my knowledge and belief.

Milo E. Stefan
Signature

3/21/84
Date

Affix Land Surveyor Seal



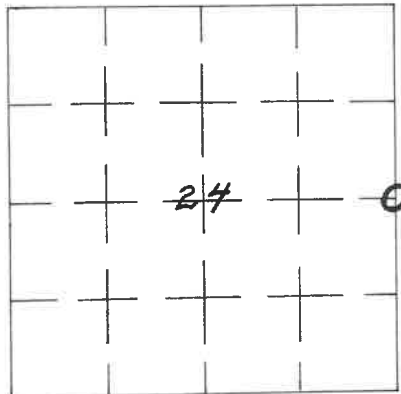
86979

STATE OF WISCONSIN

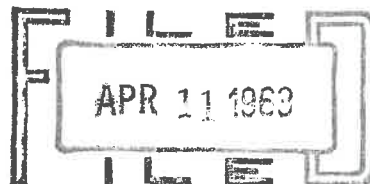
I NEAL SPERHAKE, do hereby certify that on the FIFTEENTH day of NOVEMBER, 1962, I restored the EAST QUARTER SECTION CORNER of SECTION 24, TOWNSHIP 34 NORTH, RANGE 13 EAST, Fourth Principal Meridian, as described hereon.

Resident Witnesses:

Richard Piontek - Waubeno.
David Pichotta - Waubeno.



O = Corner monument restored

REGISTER'S OFFICE
FOREST COUNTY, WIS.

At 2 o'clock P.M.
Karl A. Anger Register of Deeds

RESTORATION OF LOST ORIGINAL GOVERNMENT SURVEY CORNER

Index No. P-25

P25

History of original corner establishment:

This corner can also be described as: THE QUARTER SECTION CORNER BETWEEN SECTIONS 24, T34N-R13E, AND, 19, T34N-R14E, 4TH P.M.

This corner was established during the original survey of this township, as noted in the Original Field Notes for the Original Survey of T34N-R13E, 4th p.m.

Description of monument and accessories I established to perpetuate the location of this corner.

At the point determined for the location of the corner I emplaced a:

"GALVANIZED IRON PIPE, THREE FEET LONG, ONE INCH IN DIAMETER, WITH AN ALUMINUM CAP DENOTED AS, 'KIMBERLY-CLARK CORP T34N 1/4 BTWN 24 & 19 R13-14E SPERHAKE RLS 463 11-15-62".

The pipe is witnessed by:

Maple 7 S68°E 6 links. (Scribed S19 NBT).
 Maple 6 S27°W 23 links. (Scribed S24 NBT).

Description as to how corner was located:

No evidence of original corner present. Thus, set by proportionate measurement between the previously established section corners, one have mile north and south, respectively. The distance between the corners is 80.25 chains. Thus, set the 1/4 corner 40.12½ chains from either section corner, on a straight line between them.

Dated at Crandon, Wis., this 11th day of April, 19 63Signature Neal Sperhake Title Registered Land Surveyor Registration No. S-463

~~in the presence of~~ Forest, County of Forest, I hereby certify that the within instrument was signed and sworn to ~~in the presence of~~ on the 11th day of April, 19 63

at xxx xxx xx.

Adeline DeNoble
 Notary ~~(Register of Deeds)~~ Public
 Forest County, Wisconsin My Commission Expires
 February 6, 1966
 My commission expires xxx

Surveyor's Seal

SEE ALSO P-1 T34 R14

43413242000