

U.S. PUBLIC LAND SURVEY MONUMENT RECORD

This form is intended and designed to fulfill all requirements of Wisconsin Administrative Code, Chapter A-E 7.08 U.S. Public Land Survey Monument Record (3) (a)(b)(c)(d)(e)(f)(g)(h)(i).

The coordinate value shown has been verified by at least one of the following methods: 1) Comparison to a previously GNOSIS determined published value; 2) The value is the average of two or more GNOSIS observations at a markedly different time; 3) One or more distances were measured back to the GNOSIS observed corner from temporary GNOSIS observed offset locations.

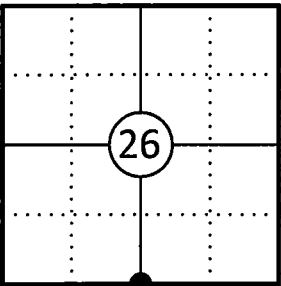
A-E 7.08(3)(a) Identity of the corner:

S 1/4 Corner Section 26	WINCERS - Forest County
Township 34 North	N: 505964.790 USAF
Range 13 East	E: 853747.270 USAF
Town of Nashville	Datum: NAND 83 (2011)
County of Forest	GNOSIS Method: DISCORDS VCRS Direct Observation

Original Corner Information:

Original Surveyor: J.L. Bowline	Original B.T.'s: Hemlock 10" - N30°E, 20 links
Date of Survey: October 1865	Hemlock 7" - S72°W, 28 links

Corner ID: 43413260020



A-E 7.08(3)(b)(e)(f)(g) Describe any record evidence, monument evidence, occupational evidence, testimonial evidence or any other material evidence considered. Describe any discrepancy between the corner restored and any previously established location. State whether the corners was restored through acceptance of obliterated evidence, a found perpetuated location, or determined by proportionate methods.

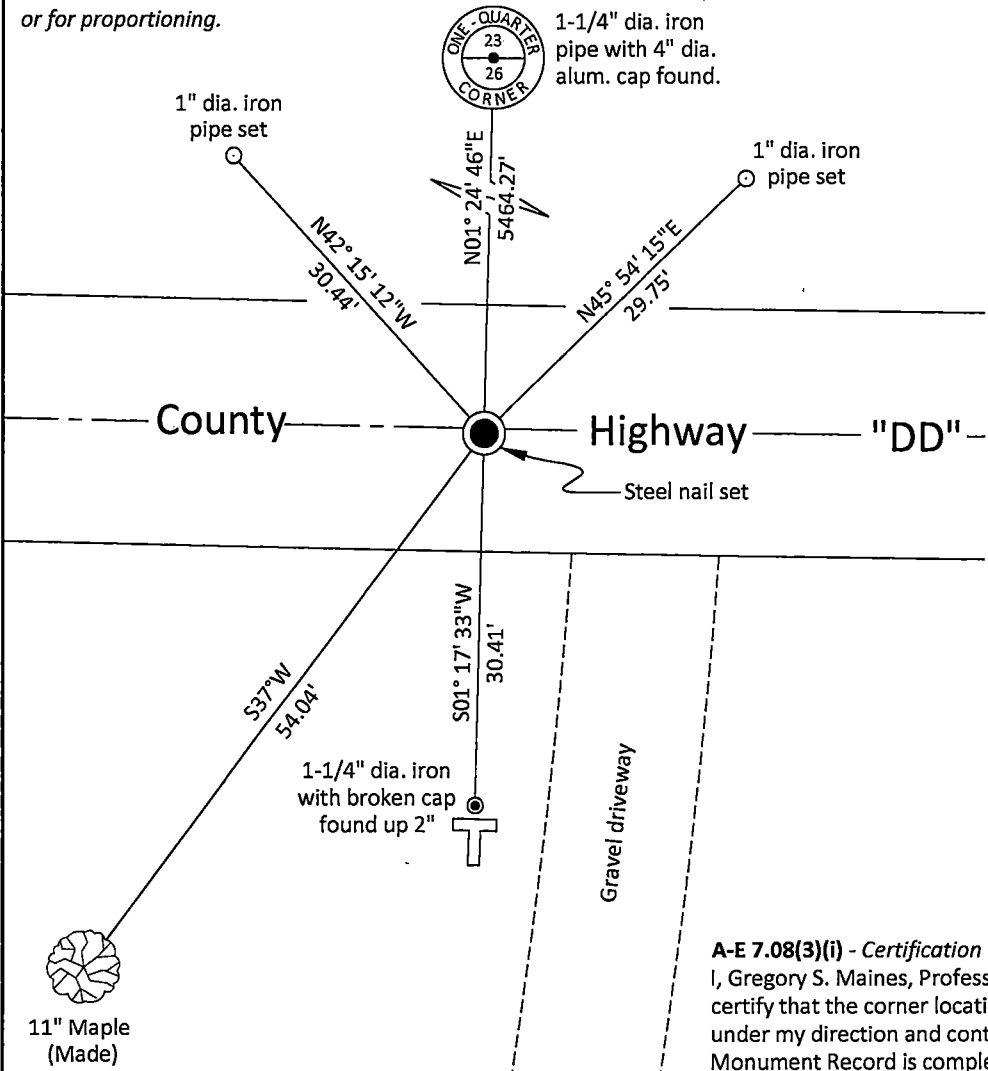
11/21/1963 Restoration of Lost Original Government Survey Corner by Neal Sperhake indicates he established the corner by single proportionate measurements and in the centerline of the road. He set a 1" dia. iron pipe with a Kimberly Clark Corp aluminum cap for a witness corner and made two bearing trees. (See corner form for prior history and additional information).

05/15/1993 Wayne G. Dobbratz, Forest Co Surveyor File # 341335-19930515 found an iron spike with a witness corner.

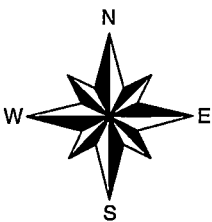
01/05/2023 Timothy J. Rusch, Forest Co Surveyor File # 341325-20230105 found a railroad spike at the corner position.

10/09/2025 I searched for but could not find the railroad spike in the road that Rusch found in 2023. We did find the witness corner set by Sperhake in 1963 to the south. We reached out to Rusch to get information from him on the corner. We checked into his survey from 2023 and set a steel nail at Rusch's position. This position also matched Dobbratz's distance east to the southeast corner of Section 26. I set two reference monuments, made one bearing tree and used the Sperhake witness corner to the south to witness the corner as shown below.

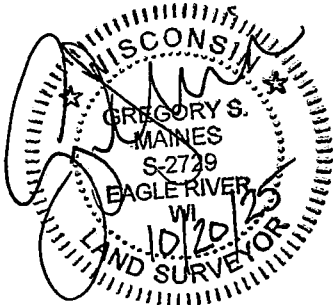
A-E 7.08(3)(c)(d)(e)(h) Plan view of corner with ties to at least four witnesses. If in disagreement with previously established corner, show the distances between the two corners and also indicate the tie to the disputed corner. Distances and directions to other PLISSE used as evidence or for proportioning.



Bearings given to the nearest second are Forest County Grid. All other bearings are magnetic



- * Vinyl "T" post set next to reference monument
- * Distances to bearing trees are to nail in side with BT tag on tree.
- * Sketch is not to scale



A-E 7.08(3)(i) - Certification

I, Gregory S. Maines, Professional Land Surveyor No. 2729, hereby certify that the corner location on this record was referenced by me or under my direction and control and that this U.S. Public Land Survey Monument Record is complete to the best of my knowledge and belief.

State of Wisconsin }
County of FOREST } ss. RESTORATION OF LOST ORIGINAL GOVERNMENT SURVEY CORNER.

I NEAL SPERHAKE, do hereby certify that on the TWENTY-FIRST day of NOVEMBER, 1963, I established the NORTH QUARTER SECTION CORNER OF SECTION 35, TOWNSHIP 34 NORTH, RANGE 13 EAST, Fourth Principal Meridian, as described hereon.

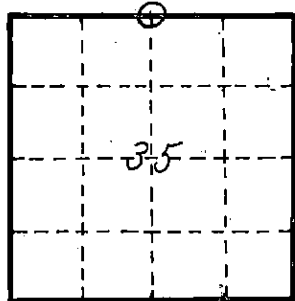
History: This corner was established during the original survey of this township, as noted in the original field notes for the original survey of T34N-R13E, 4th. p.m.

Description of monument and accessories I established to perpetuate the location of this corner:

At the point determined for the location of the corner I emplaced a:
GALVANIZED IRON PIPE, THREE FEET LONG, ONE INCH IN DIAMETER, WITH ALUMINUM CAP DENOTED AS, "KIMBERLY-CLARK CORP. T34N 1/4 BTWN. 26 & 35 WC - Corner is 30 Feet North - WC."

The pipe is witnessed by:
Elm 7 N 02°W 105 links. (SCRIBED 1/4 S 26 WC BT).
Elm 6 S 68°E 40 1/2 links. (SCRIBED 1/4 S 35 WC BT).

Description as to how corner was located: No evidence of original corner present. Thus, set by proportionate measurement. The section corners 1/2 mile east and west have been previously established with a distance of 79.04 chains between them. Thus, set the quarter corner 39.52 chains from either corner and in the center line of the road.



O = Corner monument restored

Received for record this 25 day of Aug. 1964
Anna Peterson
NOTARY PUBLIC, FOREST CO., WIS
COM. EXPIRES 10/31/65

50000

Resident witnesses _____
Dated at Crandon, Wisconsin, this 25 day of Aug, 19 64.
Signature Neal Sperhake
Title Registered Land Surveyor Registration No. 463
Office of Reg. of Deeds County of Forest
I hereby certify that the within instrument was filed in this office for record on the 25 day of Aug 19 64, and was filed in Book No. _____ Page No. _____ of County Records.

Surveyor's Seal

Signature Anna Peterson Title Reg. Deeds

43413.260020

Index No. 43413.260020