

FILED ON:

11/11/2025 04:02 PM

CORTNEY BRITTEN CLEEREMAN  
REGISTER OF DEEDS

FOREST COUNTY WI

PAGES: 2

U.S. PUBLIC LAND SURVEY MONUMENT RECORD

This form is intended and designed to fulfill all requirements of Wisconsin Administrative Code, Chapter A-E 7.08 U.S. Public Land Survey Monument Record (3) (a)(b)(c)(d)(e)(f)(g)(h)(i).

The coordinate value shown has been verified by at least one of the following methods: 1) Comparison to a previously GNSS determined published value; 2) The value is the average of two or more GNSS observations at a markedly different time; 3) One or more distances were measured back to the GNSS observed corner from temporary GNSS observed offset locations.

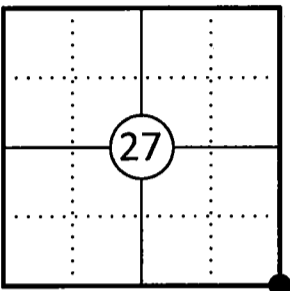
A-E 7.08(3)(a) Identity of the corner:

SE Corner Section 27	WISCRS - Forest County
Township 34 North	N: 506066.741 USFT
Range 13 East	E: 851138.443 USFT
Town of Nashville	Datum: NAD 83 (2011)
County of Forest	GNSS Method: WISCRS VRS Direct Observation

Original Corner Information:

Original Surveyor: J.L. Nowlin	Original B.T.'s: Birch 15" - N75°E, 75 links
Date of Survey: October 1865	Tamarack 12" - N35°W, 300 links

Corner ID: 43413270000



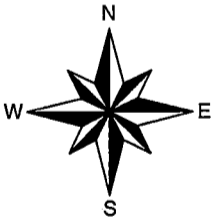
A-E 7.08(3)(b)(e)(f)(g) Describe any record evidence, monument evidence, occupational evidence, testimonial evidence or any other material evidence considered. Describe any discrepancy between the corner restored and any previously established location. State whether the corners was restored through acceptance of obliterated evidence, a found perpetuated location, or determined by proportionate methods.

11/19/1963 Restoration of Lost Original Government Survey Corner by Neal Sperhake established the corner position using a found scribed wood post along the north side of County Highway "DD" for the east - west portion and the centerline of County Highway "DD" for the north - south position. He set a 1" dia. iron pipe with a Kimberly Clark Corp aluminum cap for a witness corner and made four bearing trees. (See corner form for prior history and additional information).

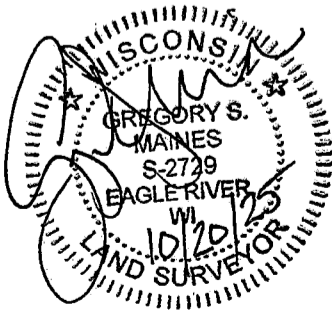
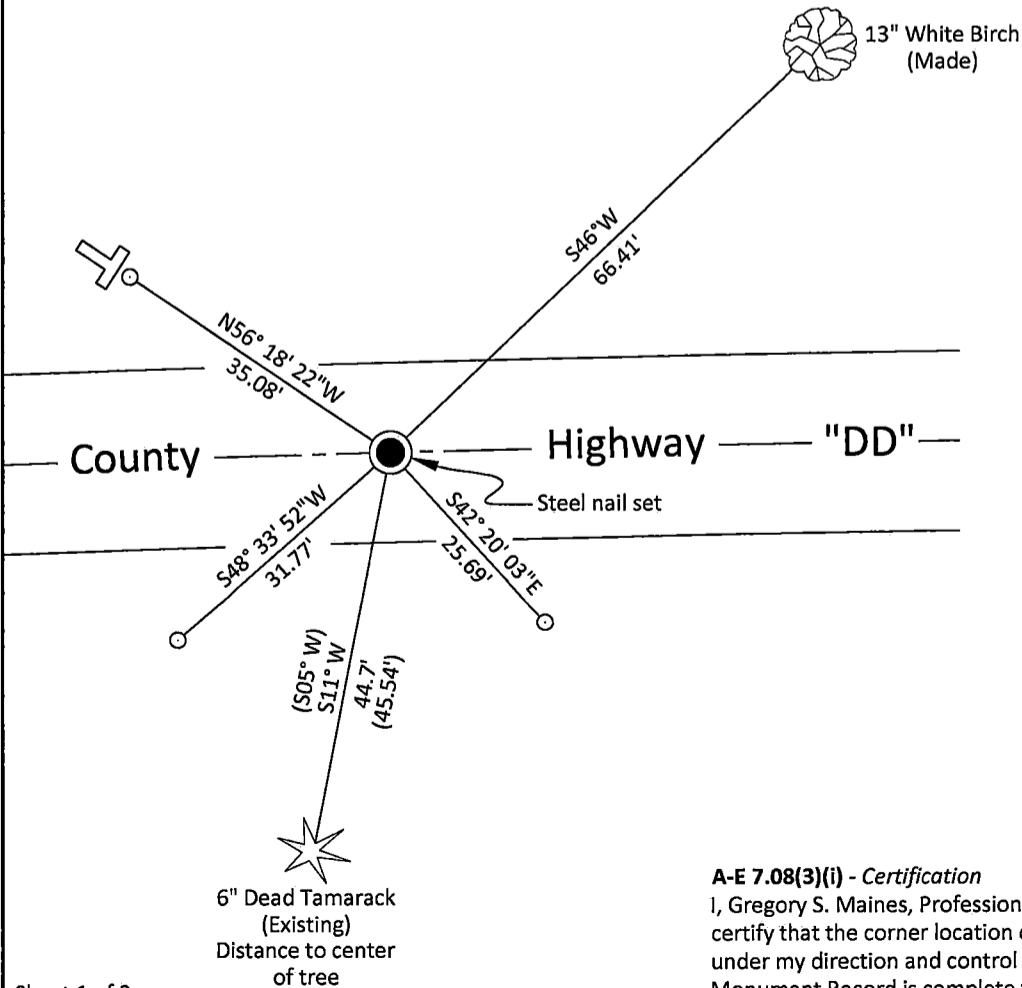
10/09/2025 I searched for and found no evidence of a corner in the road or the witness corner set by Sperhake. I found one of Sperhake's bearing trees to the southwest. I positioned the corner by extending a line north from the southeast corner of Section 34 through the east quarter corner of Section 34 to the centerline of County Highway "DD" and then extending a line south from the northeast corner of Section 27 through the east quarter corner of Section 27 to the centerline of County Highway "DD". These two lines intersected at the same point on the centerline of County Highway "DD". This position also matched pretty good going west to the south quarter corner of Section 26 and going east to the southeast corner of Section 27 and matched within 0.8' to the found bearing tree to the southwest. I set a steel nail in the centerline of County Highway "DD", made one new bearing tree and set three reference monuments to witness the corner as shown below.

A-E 7.08(3)(c)(d)(e)(h) Plan view of corner with ties to at least four witnesses. If in disagreement with previously established corner, show the distances between the two corners and also indicate the tie to the disputed corner. Distances and directions to other PLSS used as evidence or for proportioning.

Bearings given to the nearest second are Forest County Grid. All other bearings are magnetic



- \* Vinyl "T" post set 0.5' northwest of northwest reference monument.
- \* Distances to bearing trees are to nail in side with BT tag on tree.
- \* Sketch is not to scale

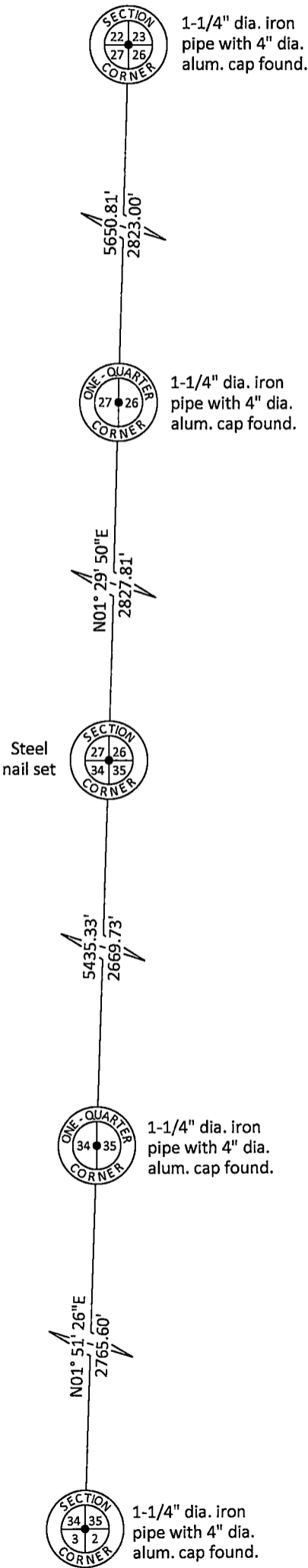
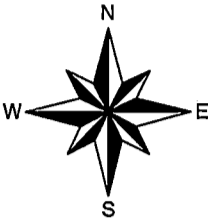


A-E 7.08(3)(i) - Certification

I, Gregory S. Maines, Professional Land Surveyor No. 2729, hereby certify that the corner location on this record was referenced by me or under my direction and control and that this U.S. Public Land Survey Monument Record is complete to the best of my knowledge and belief.

U.S. PUBLIC LAND SURVEY MONUMENT RECORD

Bearings given to the nearest  
second are Forest County Grid.  
All other bearings are magnetic



State of Wisconsin  
County of FOREST

ss. RESTORATION OF LOST ORIGINAL GOVERNMENT SURVEY CORNER.

I NEAL SPERHAKE, do hereby certify that on the NINETEENTH day of NOVEMBER, 19 63, I established the NORTHWEST SECTION CORNER OF SECTION 35, TOWNSHIP 34 NORTH, RANGE 13 EAST, Fourth Principal Meridian, as described hereon.

History: This corner was established during the original survey of this township, as noted in the original field notes for the original survey of T34N-R13E, 4th. p.m.

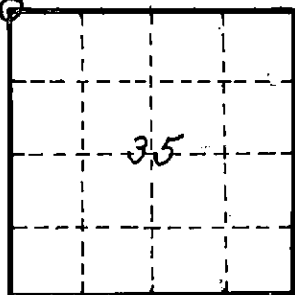
Description of monument and accessories I established to perpetuate the location of this corner:

At the point determined for the location of the corner I emplaced a:  
GALVANIZED IRON PIPE, THREE FEET LONG, ONE INCH IN DIAMETER, WITH ALUMINUM CAP DENOTED AS, "KIMBERLY-CLARK CORP. T34N 26, 27, 34, 35 R13E WC - Corner is South 20 Feet - WC."

The pipe is witnessed by:

- Tamarack 3 N 75°W 27 links. (SCRIBED S 27 WC BT).
- W. Birch 6 N 75°E 105 links. (SCRIBED S 26 WC BT).
- Tamarack 6 S 05°W 69 links. (SCRIBED S 34 WC BT).
- Tamarack 5 S 36°E 83½ links. (SCRIBED S 35 WC BT).

Description as to how corner was located: No evidence of the original corner is present. An old scribed post was located on the north edge of the county highway DD, in the general vicinity of where the section corner should be. This post does not fit in position for proportionate measurement. Previous survey work has showed that the line between 26 and 27 is abnormally long, due to the erratic nature of the original survey. It actually appears that one full tally or five chains may have been dropped in the original survey on this line. Therefore, proportionate measurement for the north-south position of the corner is not feasible. Proportionate measurement for the east-west position between the quarter section corner between 27 and 34, and the corner of 25, 26, 35, 36, would place the corner of 26, 27, 34, 35, just a chain west of the position of the scribed post. According to the original field notes one of the original bearing trees for this corner was a "Birch 15 N 75°E 75 links". The corner, whether set from proportionate measurement, or where the old post was found, will be in an open bog that has never supported any timber, especially birch. However, from where the scribed post is, it is possible to go north 75 degrees east for just 75 links to the edge of the high ground, which today still supports a growth of birch. If the proportionate position of the corner were used, it would be necessary to go one chain and 75 links eastward to where it would be possible for a birch to have grown a hundred years ago. Thus, I feel that the scribed post, having been set at least forty or fifty years ago, from its appearance, marks the east-west position of the corner of 26, 27, 34, 35.



0 = Corner monument restored

(continued on back)

Resident witnesses

Dated at Grandon, Wisconsin, this 25 day of Aug, 19 64.

Signature

Title Registered Land Surveyor Registration No. 463

Office of Reg. of Deeds County of Forest

I hereby certify that the within instrument was filed in this office for record on the 25 day of Aug. 19 64, and was filed in Book No. Page No. of County Records.

Signature Anna Peterson Title Reg. of Deeds

43413270000

Subscribed & sworn to before me this 25 day Aug. 1964  
Anna Peterson  
NOTARY PUBLIC, FOREST CO., WIS  
COM. EXPIRES 10/31/65

Surveyor's Seal

68939  
Index No. V-17

No records of the setting of this old post can be located. However, it is my opinion that the center line of county highway DD was probably located on the section line in this area. Thus, I also believe that the scribed post is actually a witness corner to the section corner which should be in the center of the highway. To the east, the northern half mile of the line between 35 and 36 is 40.04 chains long. To the west the northern half mile of the line between 33 and 34 is 40.14 chains long. If the location of the scribed post is used as the corner of 26, 27, 34, 35, the length of the northern half mile of the line between 34 and 35 would be 40.67 chains. If the center line of the county highway is taken as the section line, the length of the northern half mile between 34 and 35 would be 40.37 chains. This corresponds better with other similar lines, as noted above. Therefore, I have accepted the center line of county highway DD as marking the north-south position of the corner of 26, 27, 34, 35.

The corner of 26, 27, 34, 35, is 41.06 chains east of the quarter corner between sections 27 and 34, 79.04 chains west of the corner of 25, 26, 35, 36, 85.88 chains south of the corner of 22, 23, 26, 27, and 40.37 chains north of the quarter corner between sections 34 and 35.