

U.S. PUBLIC LAND SURVEY MONUMENT RECORD

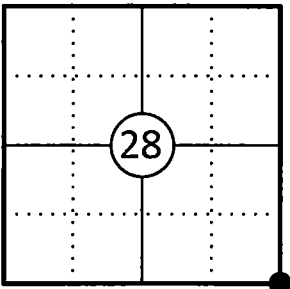
This form is intended and designed to fulfill all requirements of Wisconsin Administrative Code, Chapter A-E 7.08 U.S. Public Land Survey Monument Record (3) (a)(b)(c)(d)(e)(f)(g)(h)(i).

The coordinate value shown has been verified by at least one of the following methods: 1) Comparison to a previously GNSS determined published value; 2) The value is the average of two or more GNSS observations at a markedly different time; 3) One or more distances were measured back to the GNSS observed corner from temporary GNSS observed offset locations.

A-E 7.08(3)(a) Identity of the corner:

SE Corner Section 28	WISCRS - Forest County
Township 34 North	N: 506078.302 USFT
Range 13 East	E: 845807.837 USFT
Town of Nashville	Datum: NAD 83 (2011)
County of Forest	GNSS Method: WISCRS VRS Direct Observation

Corner ID: 43413280000



Original Corner Information:

Original Surveyor: J.L. Nowlin	Original B.T.'s: Sugar 20" - N36°W, 37 links
Date of Survey: October 1865	Hemlock 15" - N21°E, 26 links

A-E 7.08(3)(b)(e)(f)(g) Describe any record evidence, monument evidence, occupational evidence, testimonial evidence or any other material evidence considered. Describe any discrepancy between the corner restored and any previously established location. State whether the corners was restored through acceptance of obliterated evidence, a found perpetuated location, or determined by proportionate methods.

10/22/1963 Restoration of Lost Original Government Survey Corner by Neal Sperhake indicates he set a 1" dia. iron pipe with a Kimberly Clark Corp aluminum cap by proportionate measurement. (See corner form for prior history and additional information).

09/21/1979 William F. Kelly Forest, County Certified Survey Map Vol. 3, Pg. 2 indicates an aluminum cap section corner.

04/24/1985 Norman A. Harrison, Forest Co Surveyor File # 341328-19850424 indicates a 4" dia. cap on 1" dia. iron pipe monument set for Kimberly-Clark Corp. by Neal Sperhake. (This corner was used by Harrison on others surveys in the area).

02/03/1998 Robert O Kamps, Sunset Shores plat indicates a found Forest County Monument (1" dia. iron pipe with aluminum cap).

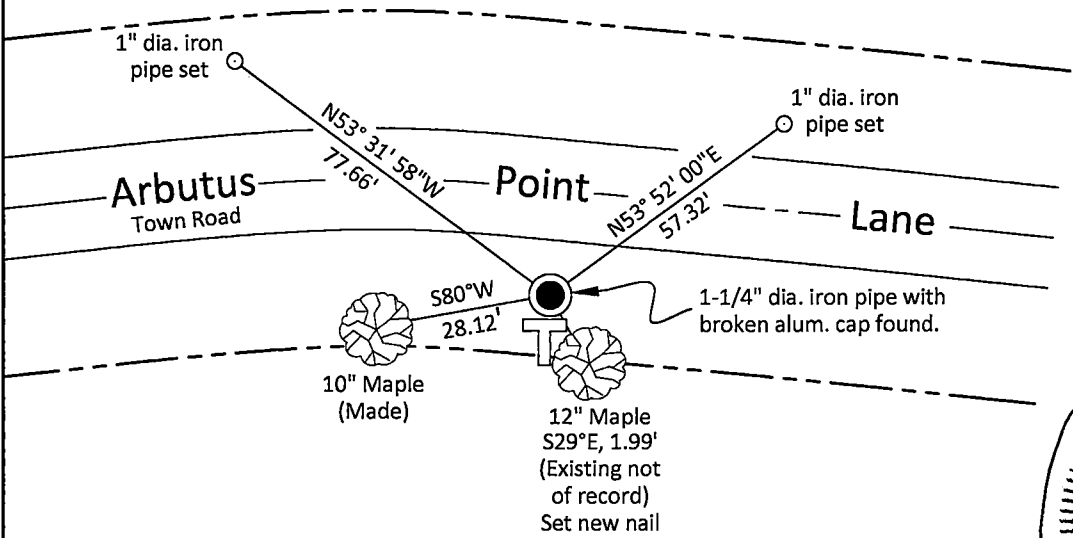
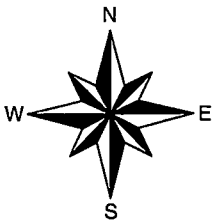
03/02/2000 Kim H. Pritzlaff, Forest Co. Surveyor File # 341327-20000302 indicates an existing Forest County Monument of Record.

02/07/2007 Timothy J. Rusch, Forest Co Surveyor File # 341333-20070207 found an aluminum capped survey monument.

05/05/2025 I found and accepted a 1-1/4" dia. iron pipe with a broken Kimberly Clark Corp aluminum cap stamped to identify the corner 3" above grade at the corner location and one existing bearing tree not of record. I made one additional bearing tree and set two iron pipes as references to witness the corner as shown below.

A-E 7.08(3)(c)(d)(e)(h) Plan view of corner with ties to at least four witnesses. If in disagreement with previously established corner, show the distances between the two corners and also indicate the tie to the disputed corner. Distances and directions to other PLSS used as evidence or for proportioning.

Bearings given to the nearest second are Forest County Grid. All other bearings are magnetic



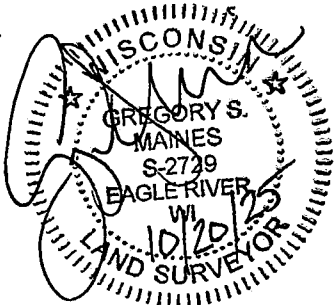
\* Vinyl "T" post 0.7' south of corner and a steel fence post was found 0.8' Southwest of corner.

\* Distances to bearing trees are to nail in side with BT tag on tree.

\* Sketch is not to scale

A-E 7.08(3)(i) - Certification

I, Gregory S. Maines, Professional Land Surveyor No. 2729, hereby certify that the corner location on this record was referenced by me or under my direction and control and that this U.S. Public Land Survey Monument Record is complete to the best of my knowledge and belief.



Index No.:

1/3

43413280000

State of Wisconsin

County of FOREST

ss. RESTORATION OF LOST ORIGINAL GOVERNMENT SURVEY CORNER.

I NEAL SPERHAKE, do hereby certify that on the TWENTY-SECOND day of OCTOBER, 19 63, I established the NORTHWEST SECTION CORNER OF SECTION 34, TOWNSHIP 34 NORTH, RANGE 13 EAST, Fourth Principal Meridian, as described hereon.

History: This corner was established during the original survey of this township, as noted in the original field notes for the original survey of T34N-R13E, 4th. p.m.

Description of monument and accessories I established to perpetuate the location of this corner:

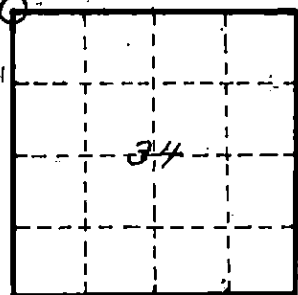
At the point determined for the location of the corner I emplaced a:

GALVANIZED IRON PIPE, THREE FEET LONG, ONE INCH IN DIAMETER, WITH ALUMINUM CAP DENOTED AS, "KIMBERLY CLARK CORP. T34N 27, 28, 33, 34 R13E SPERHAKE RLS 463 10/22/63."

The pipe is witnessed by:

W. Birch 7 N 68°E 99 links. (SCRIBED S 27 NBT).  
B. Cherry 5 N 34°W 119 links. (SCRIBED S 28 NBT).  
W. Birch 6 S 72°W 36½ links. (SCRIBED S 33 NBT).  
W. Birch 4 S 37°E 42½ links. (SCRIBED S 34 NBT).

Description as to how corner was located: No evidence of original corner present. Thus, set by proportionate measurement. For North-South position: The quarter corner ¼ mile south has been previously established and the section corner one mile north has been previously established with a distance of 120.41 chains between them. For East-West position: The quarter corner ¼ mile east and the meander corner on the shore of Pickeral Lake have been previously established with a distance of 134.79 chains between them. Thus, set the section corner by double proportionate measurement 40.14 chains north of the quarter corner between sections 33 and 34 and 39.79 chains west of the quarter corner between sections 27 and 34.



O = Corner monument restored

Subscribed & sworn to before me this 25 day Aug. 1964

Anna Peterson

NOTARY PUBLIC, FOREST CO., WIS  
COM. EXPIRES 10/31/65

89003

Resident witnesses \_\_\_\_\_

Dated at Crandon, Wisconsin, this 25 day of Aug, 19 64.

Signature Neal Sperhake

Title Registered Land Surveyor Registration No. 463

Office of Reg. of Deeds County of Forest  
I hereby certify that the within instrument was filed in this office for record on the 25 day of Aug, 19 64, and was filed in Book No. \_\_\_\_\_ Page No. \_\_\_\_\_ of County Records.

Surveyor's Seal

Signature Anna Peterson Title Reg. of Deeds

43413280000

Index No.

43413280000