

U.S. PUBLIC LAND SURVEY MONUMENT RECORD

This form is intended and designed to fulfill all requirements of Wisconsin Administrative Code, Chapter A-E 7.08 U.S. Public Land Survey Monument Record (3) (a)(b)(c)(d)(e)(f)(g)(h)(i).

The coordinate value shown has been verified by at least one of the following methods: 1) Comparison to a previously GNSS determined published value; 2) The value is the average of two or more GNSS observations at a markedly different time; 3) One or more distances were measured back to the GNSS observed corner from temporary GNSS observed offset locations.

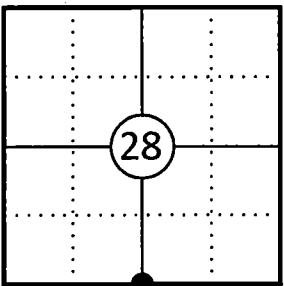
A-E 7.08(3)(a) Identity of the corner:

S 1/4 Corner Section 28	WISCRS - Forest County
Township 34 North	N: 506125.387 USFT
Range 13 East	E: 843181.817 USFT
Town of Nashville	Datum: NAD 83 (2011)
County of Forest	GNSS Method: WISCRS VRS Direct Observation

Original Corner Information:

Original Surveyor: J.L. Nowlin	Original B.T.'s: Hemlock 12" - S72°W, 22 links
Date of Survey: October 1865	Birch 16" - N63°E, 27 links

Corner ID: 43413280020

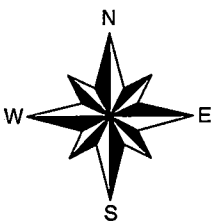
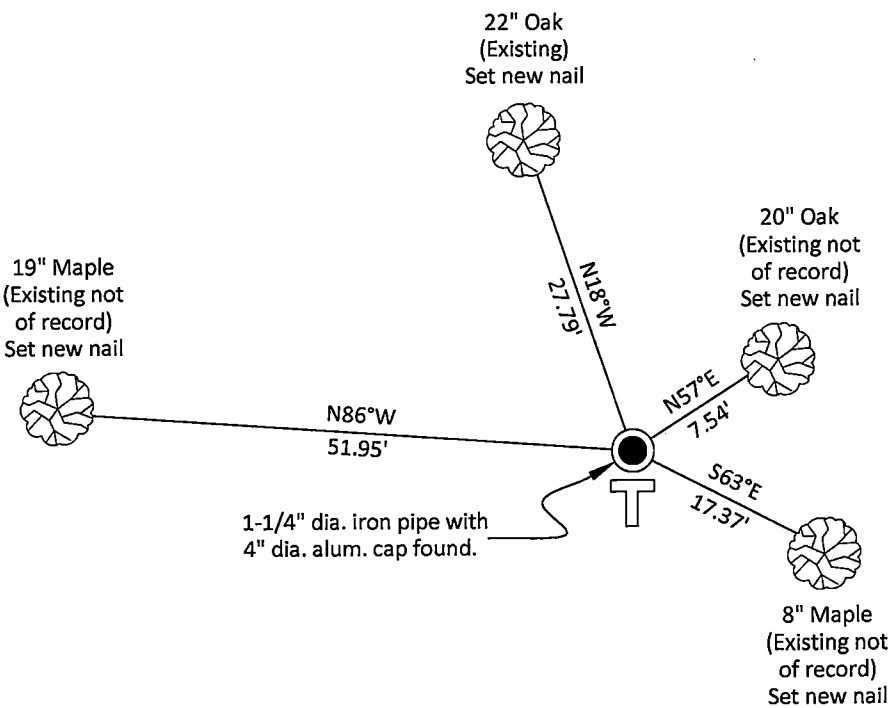


A-E 7.08(3)(b)(e)(f)(g) Describe any record evidence, monument evidence, occupational evidence, testimonial evidence or any other material evidence considered. Describe any discrepancy between the corner restored and any previously established location. State whether the corners was restored through acceptance of obliterated evidence, a found perpetuated location, or determined by proportionate methods.

- 10/22/1963 Restoration of Lost Original Government Survey Corner by Neal Sperhake indicates he set a 1" dia. iron pipe with a Kimberly Clark Corp. aluminum cap by proportionate measurements and made two bearing trees. (See corner form for prior history and additional information).
- 12/19/1997 Rob Kamps Land Surveying, Forest Co Surveyor File # 341328-00000000 found a 1" pipe w/ 4" alum cap.
- 04/20/1985 Norman A. Harrison, Forest Co Surveyor File # 341328-19850520A shows a corner on his map, but does not note what type of monument is there.
- 02/07/2007 Timothy J. Rusch, Forest Co Surveyor File # 341333-20070207 found an aluminum capped survey monument.
- 05/05/2025 I found and accepted a 1-1/4" dia. iron pipe with a Kimberly Clark Corp 4" dia. aluminum cap stamped to identify the corner 12" above grade at the corner location along with four existing bearing trees, three not of record. I used the four existing bearing trees and witnessed the corner as shown below.

A-E 7.08(3)(c)(d)(e)(h) Plan view of corner with ties to at least four witnesses. If in disagreement with previously established corner, show the distances between the two corners and also indicate the tie to the disputed corner. Distances and directions to other PLSS used as evidence or for proportioning.

Bearings given to the nearest second are Forest County Grid.
All other bearings are magnetic



- * Vinyl "T" post 0.7' south of corner.
- * Distances to bearing trees are to nail in side with BT tag on tree.
- * Sketch is not to scale



A-E 7.08(3)(i) - Certification
I, Gregory S. Maines, Professional Land Surveyor No. 2729, hereby certify that the corner location on this record was referenced by me or under my direction and control and that this U.S. Public Land Survey Monument Record is complete to the best of my knowledge and belief.

State of Wisconsin

County of FOREST

ss. RESTORATION OF LOST ORIGINAL GOVERNMENT SURVEY CORNER.

I NEAL SPERHAKE, do hereby certify that on the TWENTY-SECOND day of OCTOBER, 19 63, I established the NORTH QUARTER SECTION CORNER OF SECTION 33, TOWNSHIP 34 NORTH, RANGE 13 EAST, Fourth Principal Meridian, as described hereon.

History: This corner was established during the original survey of this township, as noted in the original field notes for the original survey of T34N-R13E, 4th. p.m.

Description of monument and accessories I established to perpetuate the location of this corner:

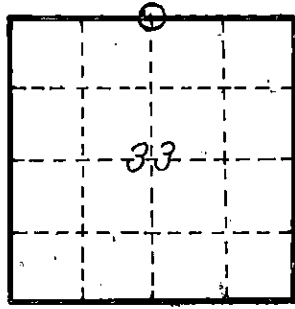
At the point determined for the location of the corner I emplaced a:

GALVANIZED IRON PIPE, THREE FEET LONG, ONE INCH IN DIAMETER, WITH ALUMINUM CAP DENOTED AS, "KIMBERLY-CLARK CORP. T34N 1/4 BTWN. 28 & 33 R13E SPERHAKE RLS 463 10/22/63."

The pipe is witnessed by:

- Oak 7 N 19°W 43 links. (SCRIBED S28 NBT).
- W. Birch 8 S 51°E 18 1/2 links. (SCRIBED S33 NBT).

Description as to how corner was located: No evidence of original corner present. Thus, set by proportionate measurement. The section corner 1/2 mile east has been set and the meander corner on the east shore of Pickeral Lake between sections 29 and 32 has been previously established. The distance between these corners is 95.00 chains. Thus, set the quarter corner by proportionate measurement 39.76 chains west of the corner common to sections 27, 28, 33 and 34 and 55.24 chains east of the meander corner on the east shore of Pickeral lake and on a straight line between them.



O = Corner monument restored

Subscribed & sworn to before me this 25 day Aug. 1964

Anna Peterson
NOTARY PUBLIC, FOREST CO., WIS
COM. EXPIRES 10/31/65

89006

Resident witnesses _____

Dated at Crandon, Wisconsin, this 25 day of Aug, 19 64.

Signature Neal Sperhake

Title Registered Land Surveyor Registration No. 463

Office of Reg. of Deeds County of Forest

I hereby certify that the within instrument was filed in this office for record on the 25 day of Aug 19 64, and was filed in Book No. _____ Page No. _____ of County Records.

Surveyor's Seal

Signature Anna Peterson Title Reg. of Deeds

43413280020

Index No.