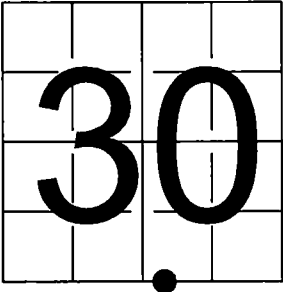


U. S. PUBLIC LAND SURVEY MONUMENT RECORD

NOTE: This form is intended and designed to fulfill all requirements of Wisconsin Administrative Code, Chapter A-E 7.08 U.S. Public Land Survey Monument Record (3) (a-i)

A-E 7.08(3)(a) Identity of corner:
Meander Corner - West side of peninsula,
Pickerel Lake, South line Section 30,
Township 34 North, Range 13 East
of the Fourth Principal Meridian,
Town of Nashville, Forest County, Wisconsin

WISCRS - FOREST COUNTY
N: 506,035.672 USft (XXX,XXX.XXX)
E: 832,892.428 USft (XXX,XXX.XXX)
Datum: NAD83 (2011)
GNSS Method RTK
GNSS Control WISCRS VRS



The coordinate value shown has been verified by the average of two or more GPS observations at a markedly different time. Coordinates shown in parenthesis are previously published values.

A-E 7.08(3)(b)

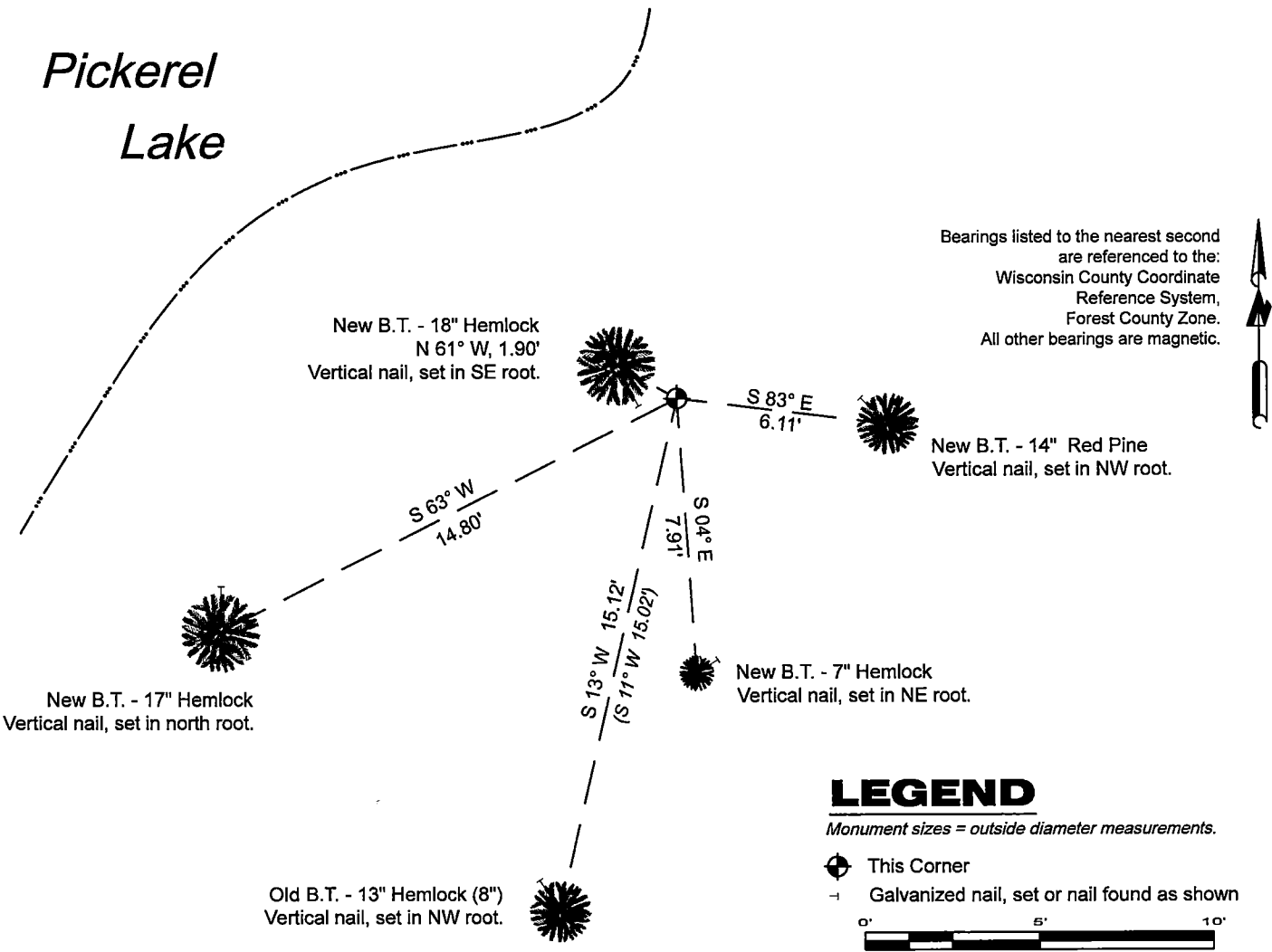
Original Surveyor: James L. Nowlin - October 1865
W. Pine 18 - S 72° W, 35 Links, W. Pine 12 - North, 3 Links

See previous Certified Land Corner Restoration - V-3 - November 11, 1975 - Surveyor 887 - Thomas R. Arnott - THENCE:

- January 16, 2002 - Surveyor 1795 - Devon Vanden Heuvel - indicates this position as "Ex. brass capped monument" on county record Map #341331-20020116.

July 13, 2024 - I found a 2" diameter iron pipe with a 2.5" diameter brass G.L.O. cap stamped to identify the corner location. I also found 1 of Arnott's bearing trees. I established 4 new reference monuments as shown below.

A-E 7.08(3)(c)(d) Plan view of corner with references to at least 4 witness monuments.



A-E 7.08(3)(e) 1865 Surveyor set a post, 1975 Surveyor found a G.L.O. monument, 2002 Surveyor found a brass capped monument, I found a G.L.O. brass capped iron pipe monument in 2024.

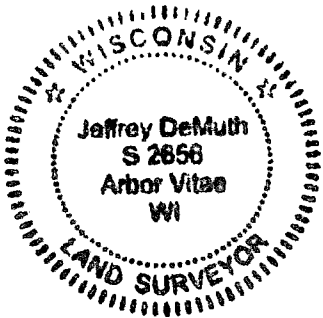
A-E 7.08(3)(f) I accept this monument in good faith as a FOUND PERPETUATED LOCATION of the corner.
A-E 7.08(3)(g)(h) This corner was not determined through lost-corner-proportionate methods.

A-E 7.08(3)(i) I, Jeffrey L. DeMuth, Professional Land Surveyor No. S-2656, hereby certify that the corner location on this record was determined by me or under my direction and control, and that this U.S. Public Land Survey Monument Record is correct and complete to the best of my knowledge, and belief.

Signature

August 27, 2024

Date



43413300019

V3

CERTIFIED LAND CORNER RESTORATION

Index No. V-33

State of Wisconsin }
County of Forest } ss.

History of original corner establishment:



I Thomas R. Arnott, do hereby
certify that on the 18th day
of September, 19 75, I found
evidence of the M.C.
corner of sections 30 & 31 on Pikerel Lake West end of section line
Township 34, North, Range
13 E, Fourth Principal Meridian,
as described hereon; and that from this evidence
I established a new monument and accessories
as described hereon to perpetuate the original
location of this corner.

Description of corner evidence found:

1 3/4" iron pipe with brass cap set by General Land Office in 1928
1 1/2" iron pipe found

Resident witnesses:

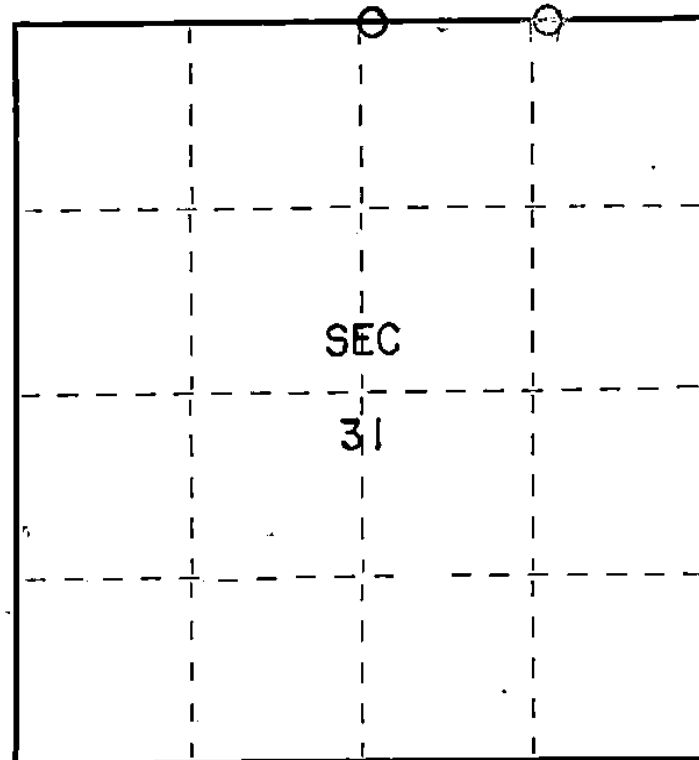
Herbert Wagoner

Description of monument and accessories I established to perpetuate the original location of this corner.

Left monument set by Gen. Land Office

Ties:

Hemlock	16	N64W	3.76 feet	(lawn tree no BT blaz
Hemlock	12	N60 1/2 E	19.13 feet	(lawn tree no BT blaz
Hemlock	8	S11W	15.02 feet	(lawn tree no BT blaz



○ = Corner monument restored.

Dated at Grandon, Wis., this 11th day of November, 1975

Signature Thomas R. Arnott Title Land Surveyor Registration No. S-887
(County Surveyor, Registered Land Surveyor, or other duly authorized official)

Office of Register of Deeds, County of Forest, I hereby certify that the within
instrument was filed in this office for record on the 11th day of November, 1975
at 4 o'clock P.M.

Eugene Stutzman Document Number 108209
(Register of Deeds)

By _____ Deputy

4341330019