

FILED ON:
11/11/2025 04:02 PM
CORTNEY BRITTEN CLEEREMAN
REGISTER OF DEEDS
FOREST COUNTY WI
PAGES: 1

U.S. PUBLIC LAND SURVEY MONUMENT RECORD

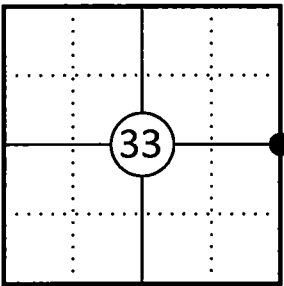
This form is intended and designed to fulfill all requirements of Wisconsin Administrative Code, Chapter A-E 7.08 U.S. Public Land Survey Monument Record (3) (a)(b)(c)(d)(e)(f)(g)(h)(i).

The coordinate value shown has been verified by at least one of the following methods: 1) Comparison to a previously GNSS determined published value; 2) The value is the average of two or more GNSS observations at a markedly different time; 3) One or more distances were measured back to the GNSS observed corner from temporary GNSS observed offset locations.

A-E 7.08(3)(a) Identity of the corner:

E 1/4 Corner Section 33	WISCRS - Forest County
Township 34 North	N: 503444.311 USFT
Range 13 East	E: 845745.022 USFT
Town of Nashville	Datum: NAD 83 (2011)
County of Forest	GNSS Method: WISCRS VRS Direct Observation

Corner ID: 43413332000



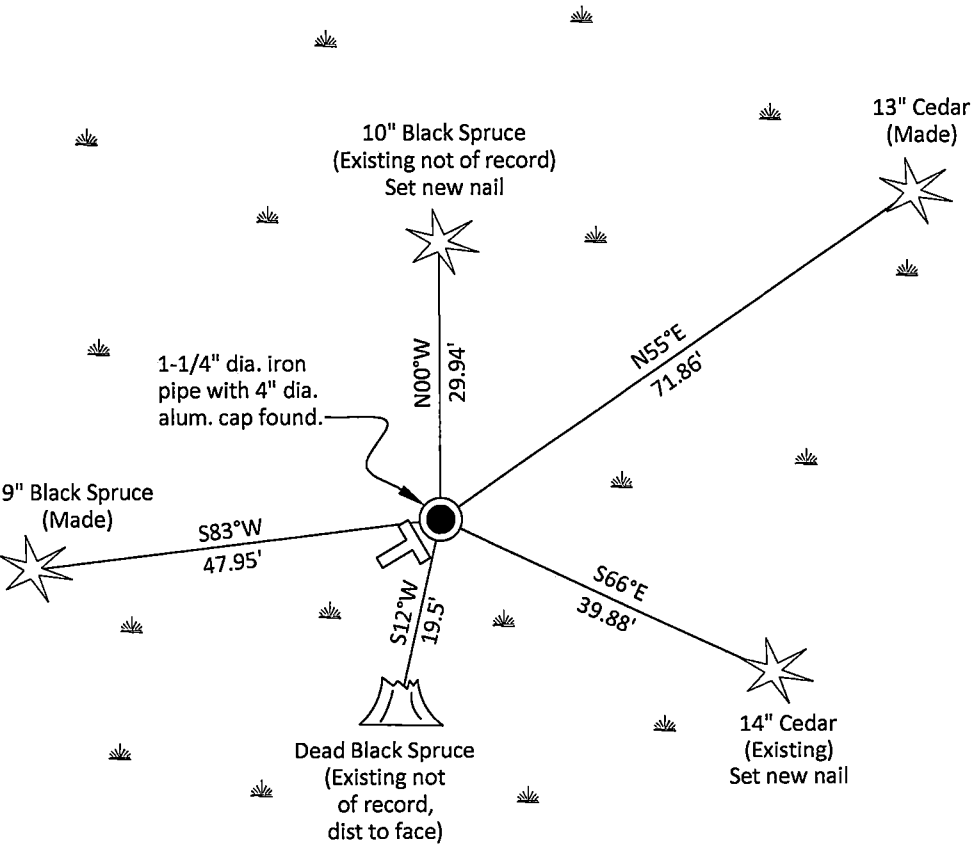
Original Corner Information:

Original Surveyor: J.L. Nowlin	Original B.T.'s: Tamarack 15" - N75°E, 21 links
Date of Survey: October 1865	Fir 12" - S70°W, 18 links

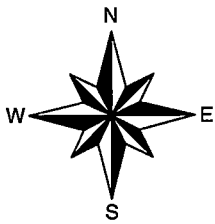
A-E 7.08(3)(b)(e)(f)(g) Describe any record evidence, monument evidence, occupational evidence, testimonial evidence or any other material evidence considered. Describe any discrepancy between the corner restored and any previously established location. State whether the corners was restored through acceptance of obliterated evidence, a found perpetuated location, or determined by proportionate methods.

- 10/22/1963 Restoration of Lost Original Government Survey Corner by Neal Sperhake indicates he set a 1" dia. iron pipe with a Kimberly Clark Corp aluminum cap and made one bearing tree. (See corner form for prior history and additional information).
- 02/07/2007 Timothy J. Rusch, Forest Co Surveyor File # 341333-20070207 found an aluminum capped survey monument in place.
- 05/07/2025 I found and accepted a 1-1/4" dia. iron pipe with a Kimberly Clark Corp 4" dia. aluminum cap stamped to identify the corner 10" above grade at the corner location along with three existing bearing trees, one of which is now dead, but still standing. I used the two existing bearing trees and made two additional bearing trees to witness the corner as shown below.

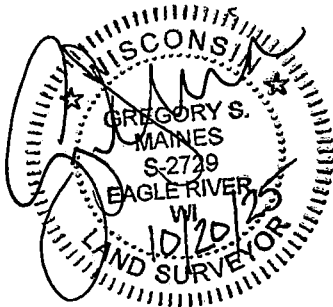
A-E 7.08(3)(c)(d)(e)(h) Plan view of corner with ties to at least four witnesses. If in disagreement with previously established corner, show the distances between the two corners and also indicate the tie to the disputed corner. Distances and directions to other PLSS used as evidence or for proportioning.



Bearings given to the nearest second are Forest County Grid. All other bearings are magnetic



- * Vinyl "T" post 0.9' southwest of corner and a steel fence post was found 3.3' southwest of corner
- * Distances to bearing trees are to nail in side with BT tag on tree.
- * Sketch is not to scale



A-E 7.08(3)(i) - Certification
I, Gregory S. Maines, Professional Land Surveyor No. 2729, hereby certify that the corner location on this record was referenced by me or under my direction and control and that this U.S. Public Land Survey Monument Record is complete to the best of my knowledge and belief.

Index No.:

1/3

43413332000

State of Wisconsin

County of FOREST

ss. RESTORATION OF LOST ORIGINAL GOVERNMENT SURVEY CORNER.

I NEAL SPERHAKE, do hereby certify that on the TWENTY-SECOND day of OCTOBER, 1965, I established the WEST QUARTER SECTION CORNER OF SECTION 34, TOWNSHIP 34 NORTH, RANGE 13 EAST, Fourth Principal Meridian, as described hereon.

History: This corner was established during the original survey of this township, as noted in the original field notes for the original survey of T34N-R13E, 4th. p.m.

Description of monument and accessories I established to perpetuate the location of this corner:

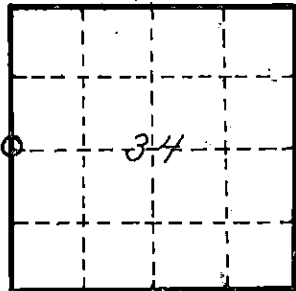
At the point determined for the location of the corner I emplaced a:

GALVANIZED IRON PIPE, THREE FEET LONG, ONE INCH IN DIAMETER, WITH ALUMINUM CAP DENOTED AS, "KIMBERLY-CLARK CORP. T34N 1/4 BTWN. 33 & 34 R13E SPERHAKE RLS 463 10/22/63."

The pipe is witnessed by:

Cedar 5 S 66°E 60 1/2 links. (SCRIBED 1/4 S 34 NBT).

Description as to how corner was located: No evidence of the original corner is present.



O = Corner monument restored

Previous survey work has proved that the lines between 35 and 36, and 34 and 35 are 82.00 chains long. If the position of the corner of 27, 28, 33, 34, is 82.00 chains north of the town line corner of 33, 34, it is possible to intersect Arbutus Lake on the line between 27 and 28 at the original chainage north of 27, 28, 33, 34. Thus, it is apparent that the line between 33 and 34 is 82.00 chains long. The quarter section corner between 32 and 33 was located with an original bearing tree still present. The length of the southern half mile of 32 and 33 is 41.80 chains. The distance between the town line corner of 35 and 36 to the quarter corner between 35 and 36 is exactly 42.00 chains. Thus, it is apparent that the southern half mile of the south tier of sections is close to 42.00 chains long. Original field notes for going north between 33 and 34 state that at 36.50 chains "enter swamp". This is a well defined swamp, and the actual chainage to the south edge of the swamp is 38.50 chains. Thus, I believe that this section is 42.00 chains long between the town line corner of 33 and 34 and the quarter section corner between 33 and 34. Therefore, I set the corner at this chainage, and on a straight line between the town line corner of 33 and 34 and the corner of 27, 28, 33, 34.

Subscribed & sworn to before me this 25 day Aug. 1964

Anna Peterson
NOTARY PUBLIC, FOREST CO., WIS
COM. EXPIRES 10/31/65

Resident witnesses _____

Dated at Grandon, Wisconsin, this 25 day of Aug, 19 64.

Signature Neal Sperhake

Title Registered Land Surveyor Registration No. 463

Office of Reg. of Deeds County of Forest

I hereby certify that the within instrument was filed in this office for record on the 25 day of Aug 19 64, ^{2PM} and was filed in Book No. _____ Page No. _____ of County Records.

Surveyor's Seal

Signature Anna Peterson Title Reg. of Deeds

43413332000

89010

Index No.

X
13
60