

FILED ON:
11/11/2025 04:02 PM
CORTNEY BRITTEN CLEEREMAN
REGISTER OF DEEDS
FOREST COUNTY WI
PAGES: 1

U.S. PUBLIC LAND SURVEY MONUMENT RECORD

This form is intended and designed to fulfill all requirements of Wisconsin Administrative Code, Chapter A-E 7.08 U.S. Public Land Survey Monument Record (3) (a)(b)(c)(d)(e)(f)(g)(h)(i).

The coordinate value shown has been verified by at least one of the following methods: 1) Comparison to a previously GNSS determined published value; 2) The value is the average of two or more GNSS observations at a markedly different time; 3) One or more distances were measured back to the GNSS observed corner from temporary GNSS observed offset locations.

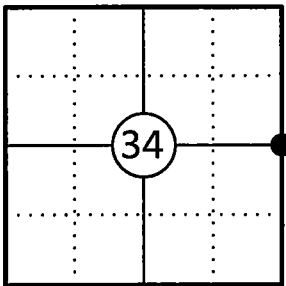
A-E 7.08(3)(a) Identity of the corner:

E 1/4 Corner Section 34	WISCRS - Forest County
Township 34 North	N: 503398.418 USFT
Range 13 East	E: 851051.920 USFT
Town of Nashville	Datum: NAD 83 (2011)
County of Forest	GNSS Method: WISCRS VRS Direct Observation

Original Corner Information:

Original Surveyor: J.L. Nowlin	Original B.T.'s: Sugar 12" - West, 27 links
Date of Survey: October 1865	Fir 10" - S70°E, 20 links

Corner ID: 43413342000

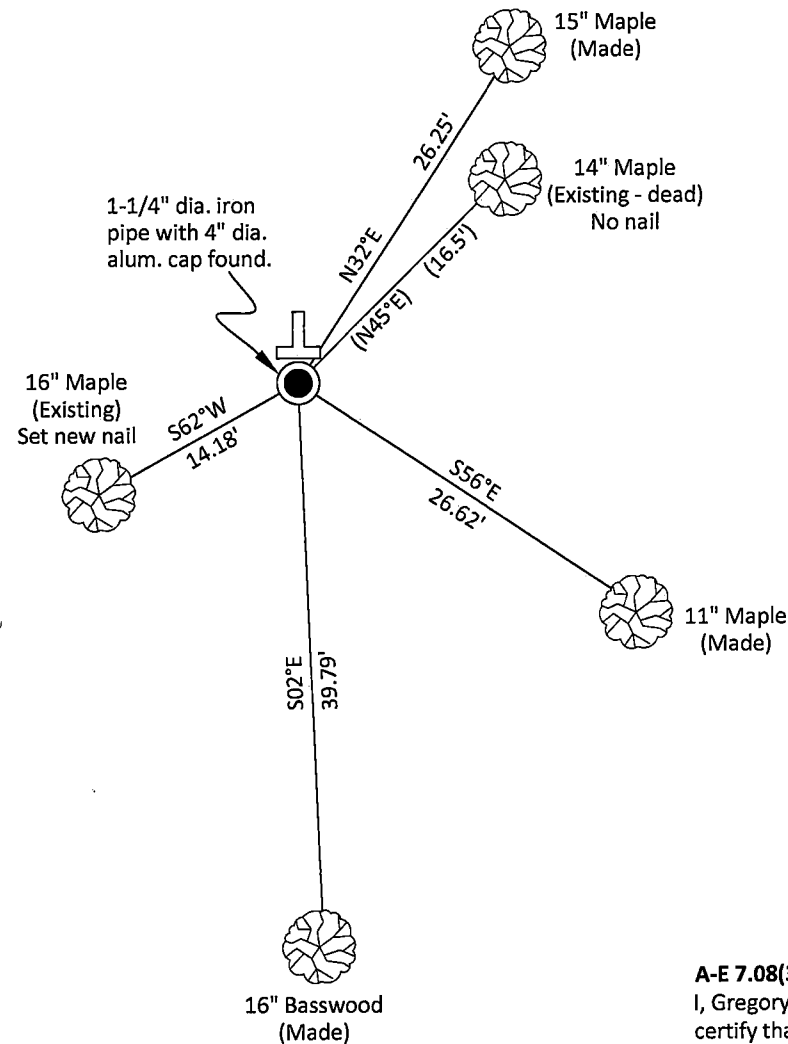


A-E 7.08(3)(b)(e)(f)(g) Describe any record evidence, monument evidence, occupational evidence, testimonial evidence or any other material evidence considered. Describe any discrepancy between the corner restored and any previously established location. State whether the corners was restored through acceptance of obliterated evidence, a found perpetuated location, or determined by proportionate methods.

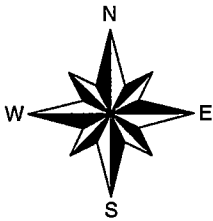
11/15/1963 Restoration of Lost Original Government Survey Corner by Neal Sperhake indicates he set a 1" dia. iron pipe with a Kimberly Clark Corp aluminum cap and made two bearing trees. (See corner form for prior history and additional information).

05/07/2025 I found and accepted a 1-1/4" dia. iron pipe with a Kimberly Clark Corp 4" dia. aluminum cap stamped to identify the corner 10" above grade at the corner location along with two bearing trees, one of which is still standing but dead. I used the one living one bearing tree and made three additional bearing trees to witness the corner as shown below.

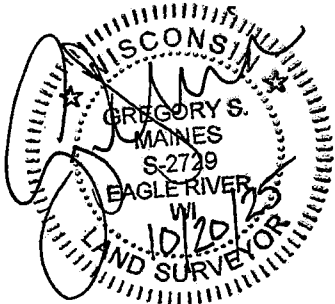
A-E 7.08(3)(c)(d)(e)(h) Plan view of corner with ties to at least four witnesses. If in disagreement with previously established corner, show the distances between the two corners and also indicate the tie to the disputed corner. Distances and directions to other PLSS used as evidence or for proportioning.



Bearings given to the nearest second are Forest County Grid. All other bearings are magnetic



- * Vinyl "T" post 0.7' north of corner.
- * Distances to bearing trees are to nail in side with BT tag on tree.
- * Sketch is not to scale



A-E 7.08(3)(i) - Certification
I, Gregory S. Maines, Professional Land Surveyor No. 2729, hereby certify that the corner location on this record was referenced by me or under my direction and control and that this U.S. Public Land Survey Monument Record is complete to the best of my knowledge and belief.

Index No.: 117

43413342000

State of Wisconsin

County of FOREST

ss. RESTORATION OF LOST ORIGINAL GOVERNMENT SURVEY CORNER.

I NEAL SPERHAKE, do hereby certify that on the FIFTEENTH day of NOVEMBER, 1963, I established the WEST QUARTER SECTION CORNER OF SECTION 35, TOWNSHIP 34 NORTH, RANGE 13 EAST, Fourth Principal Meridian, as described hereon.

History: This corner was established during the original survey of this township, as noted in the original field notes for the original survey of T34N-R13E, 4th. p.m.

Description of monument and accessories I established to perpetuate the location of this corner:

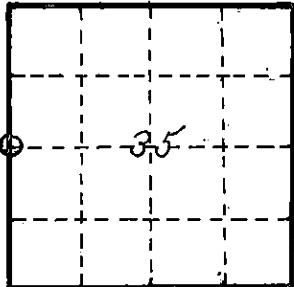
At the point determined for the location of the corner I emplaced a:

GALVANIZED IRON PIPE, THREE FEET LONG, ONE INCH IN DIAMETER, WITH ALUMINUM CAP DENOTED AS, "KIMBERLY-CLARK CORP. T34N 1/4 BTWN. 34 & 35 R13E SPERHAKE RLS 463 11/15/63."

The pipe is witnessed by:

Maple 5 S 62°W 21 1/2 links. (SCRIBED 1/4 S 34 NBT).
Basswood 8 N 45°E 25 links. (SCRIBED 1/4 S 35 NBT).

Description as to how corner was located: No evidence of the original corner present. The section corners 1/2 mile south and 1/2 mile north have been previously established with a distance of 82.37 chains between them. Recent survey work in this township shows that the southern tier of sections are 82 chains long instead of the recorded 80 chains. Further work shows that the quarter corners were set 42 chains north of the section corners. (see record of quarter corners, between sections 33 and 34 and 35 and 36) Thus, set the quarter corner 42.00 chains north of the section corner between sections 34 and 35 on the town line and on a straight line between it and the section corner one mile north.



O = Corner monument restored

Subscribed & sworn to before me this 25 day Aug. 1964

Anna Peterson
Notary Public, Forest Co., Wis
Com. expires 10/31/65

89009

Resident witnesses _____

Dated at Grandon, Wisconsin, this 25 day of Aug, 19 64.

Signature _____

Title Registered Land Surveyor Registration No. 463

Office of Reg. of Deeds County of Forest

I hereby certify that the within instrument was filed in this office for record on the 25 day of Aug 19 64, and was filed in Book No. _____ Page No. _____ of County Records.

Surveyor's Seal

Signature Anna Peterson Title Reg. of Deeds

4341334 2000

Index No.

X-17
X-17
X-17