

245854

FILED ON:

06/06/2025 03:37 PM

CORTNEY BRITTEN CLEEREMAN
REGISTER OF DEEDS

FOREST COUNTY WI

PAGES: 1

FOREST COUNTY U.S. PUBLIC LAND SURVEY MONUMENT LOCATION RECORD

☒ LANDMARK ☐ BENCHMARK _____

CORNER IDENTITY: BERNTSEN SNM-1 STEEL NAIL MARKER

FOUND ☐ SET ☐
RESET ☒ RE-TIED ☒

CORNER IDENTITY: BERNTSEN SNM-1 STEEL NAIL MARKER RE-

FOREST COUNTY COORDINATE: N: 529185.148

E: 894106.592

ELEVATION-(FEET): _____ DATUM: NAD83 (2011)

WEATHER: SUNNY

DATE OF SURVEY: 8/12/2021 TEMPERATURE: 75 °F

SURVEY PARTY: KEITH WALKOWSKI & LAUREN WINCENTSEN

BASIS FOR MONUMENT LOCATION:

(DESCRIBE METHOD OF SURVEY AND CORNER AUTHENTICATION)

SEARCHED FOR THE EAST 1/4 CORNER AND COULD NOT FIND A CORNER MONUMENT BUT DID FIND 4 TIES FROM THE RECORD 1985 TIE SHEET. CALCULATED THE CORNER POSITION AND SET A BERNTSEN SNM-1 STEEL NAIL MARKER UPON COMPLETION OF THE STATE HIGHWAY "32" RESURFACING PROJECT. SET AN ADDITIONAL TIE TO THE SOUTHWEST TO PERPETUATE THE CORNER LOCATION AS SHOWN BELOW.

COMPANY RIVERSIDE LAND SURVEYING LLC





CERTIFIED CORRECT:

KEITH WALKOWSKI S-2717

Registered Land Surveyor

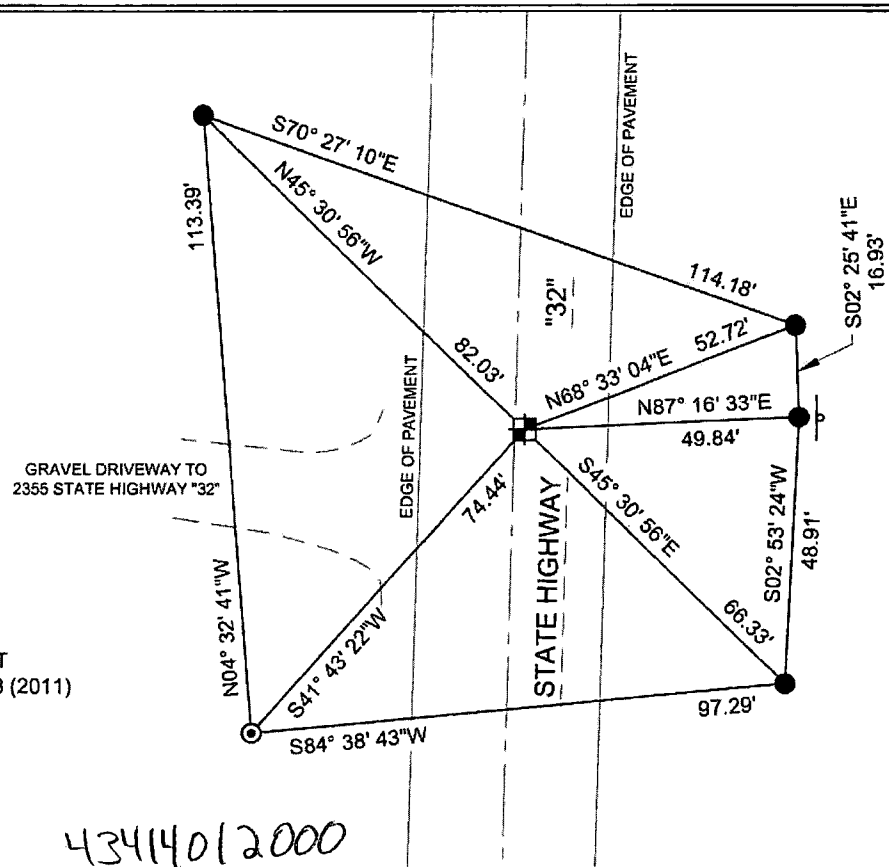
DATE: OCTOBER 18TH, 2021

TIE SKETCH:

-  - SET BERNTSEN SNM-1 STEEL NAIL MARKER
-  - SET BERNTSEN SSDR130 30" STAINLESS DRIVE-IN MONUMENT WITH 1-1/2" CAP
-  - FOUND BERNTSEN ALUMINUM CAPPED MONUMENT
-  - EXISTING SIGN

BEARINGS ARE BASED ON THE FOREST
COUNTY COORDINATE SYSTEM NAD 83 (2011)
AND REFERENCED AS SHOWN

THIS DRAWING IS NOT TO SCALE



43414012000

SECTION 1
TOWNSHIP 34 N
RANGE 14 E

FREEDOM

CITY, VILLAGE, TOWN

SECTION

A coordinate grid with x and y axes. The x-axis is labeled 'x' and the y-axis is labeled 'y'. The origin is marked with '1'.

LOCATION
(Indicated By X)

C-25)

NO.

A
N
I

C-25

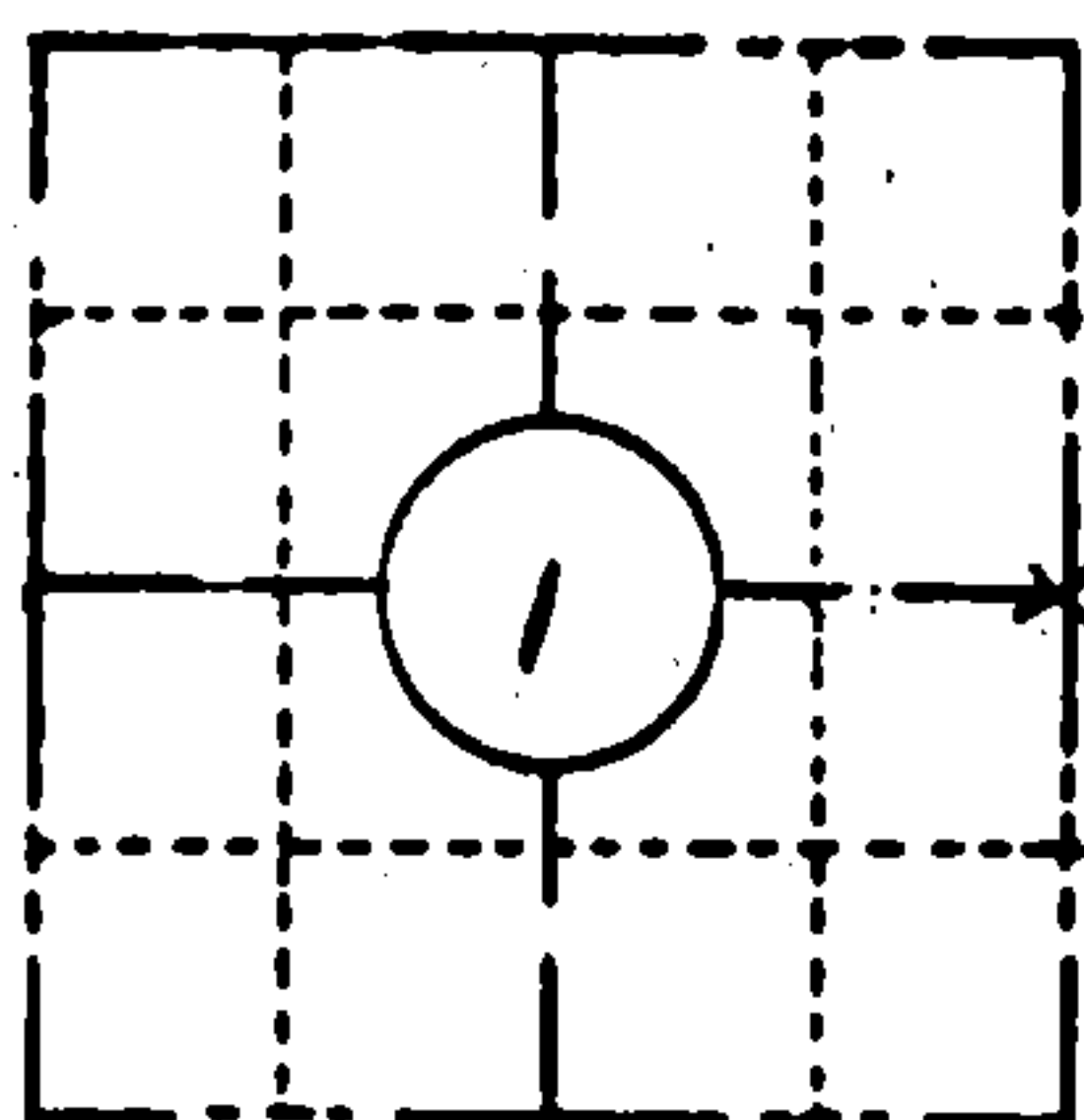
NO.

ORIGINAL ON FILE IN CO CLERK'S OFFICE
COPY HERE FOR REFERENCE

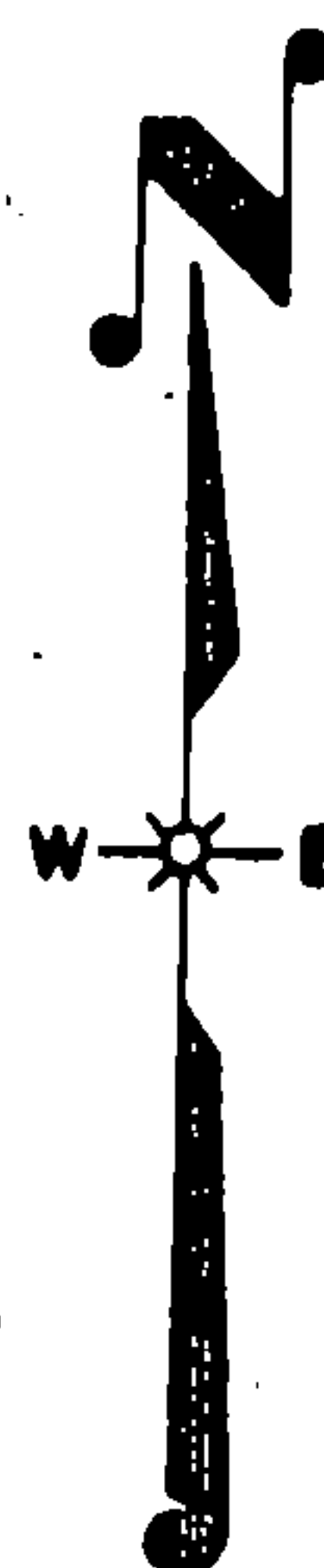
FIELD SURVEY NOTES
PRESERVATION OF LANDMARKS
(Pursuant to Section 59.635(7) Wisconsin Statutes
E-D-707-69

State of Wisconsin / Department of Transportation

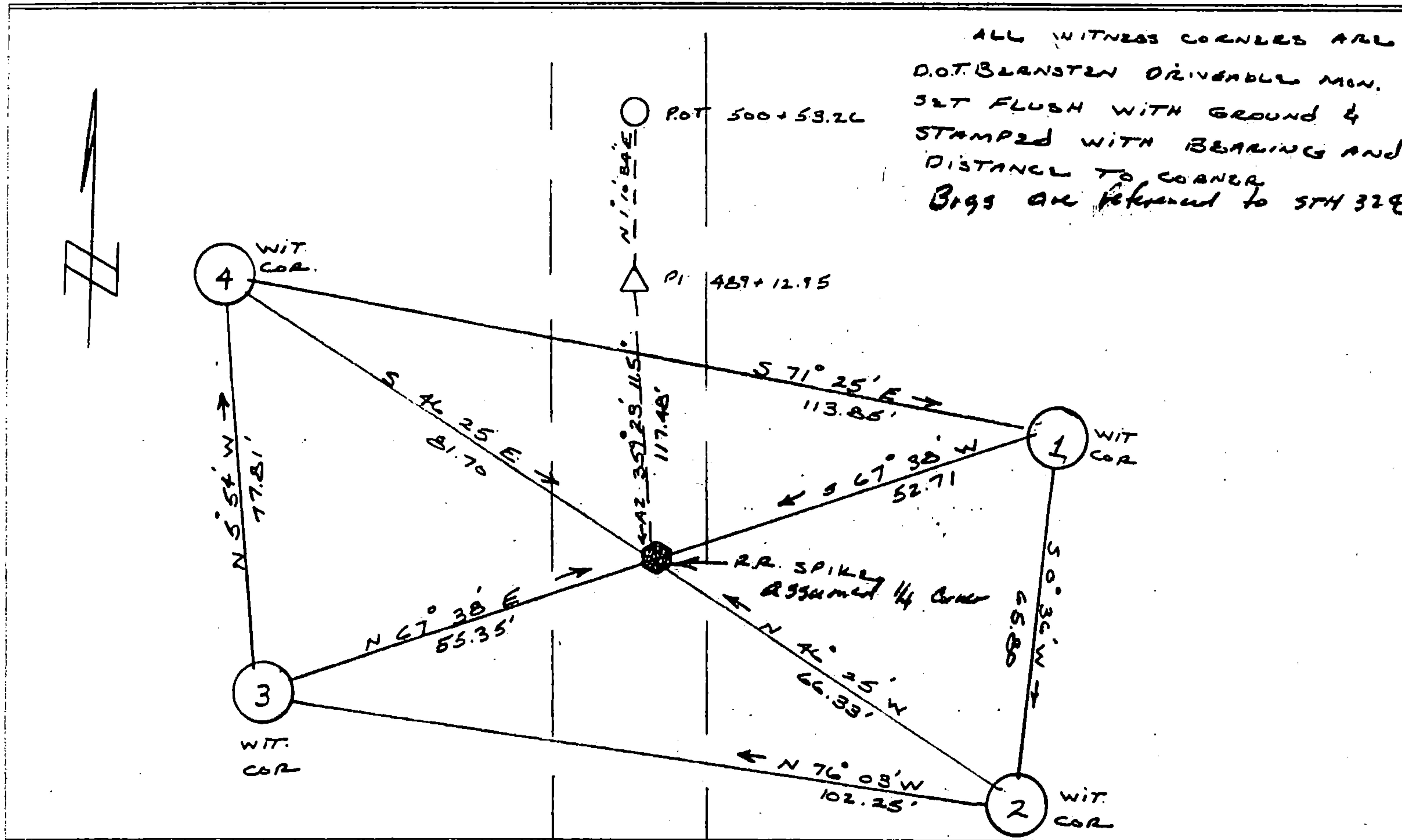
COUNTY FOREST		
TOWN FREEDOM, WAPEENO		
HIGHWAY STN 32		
SECTION 1	TOWNSHIP T 34 N	RANGE R 14 E
TYPE OF LANDMARK R.R. SPIKE & AGREES WITH USFS		



LOCATION SKETCH
(Location of landmark indicated by "x")



This space for copy of field notes or ties to the above described landmarks
REFERENCE MONUMENTS.



FILED UNDER PROJECT 9131-03-70			COUNTY CLERK'S OFFICE COUNTY OF Forest WISCONSIN } 55	
DISTRICT OFFICE NUMBER 03-07	CITY RHINELANDER	COUNTY ONEIDA	DATE RECEIVED FOR RECORD 7-10-85	DATE COPY SENT TO COUNTY SURVEYOR N/A
LOCATED OR ESTABLISHED BY NAME ROBERT B. JOHNSON			SIGNATURE OF COUNTY CLERK Dora C. James	
TITLE SURVEY CREW CHIEF DATE 5-20-85 <i>Under the direct supervision of MICHAEL HESS 500829</i>				