

CORTNEY BRITTEN CLEEREMAN  
REGISTER OF DEEDS  
FOREST COUNTY WI  
PAGES: 1

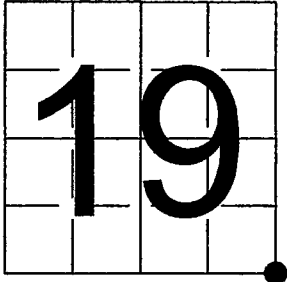
INDEX#: R5

U. S. PUBLIC LAND SURVEY MONUMENT RECORD

NOTE: This form is intended and designed to fulfill all requirements of Wisconsin Administrative Code, Chapter A-E 7.08 U.S. Public Land Survey Monument Record (3) (a-i)

A-E 7.08(3)(a) Identity of corner:  
Southeast Corner Section 19,  
Township 34 North, Range 14 East  
of the Fourth Principal Meridian,  
Town of Freedom, Forest County,  
Wisconsin

WISCORS - FOREST COUNTY  
N: 511,148.972 USft (XXX,XXX.XXX)  
E: 867,100.740 USft (XXX,XXX.XXX)  
Datum: NAD83 (2011)  
GNSS Method RTK  
GNSS Control WISCORS VRS



The coordinate value shown has been verified by the average of two or more GPS observations at a markedly different time. Coordinates shown in parenthesis are previously published values.

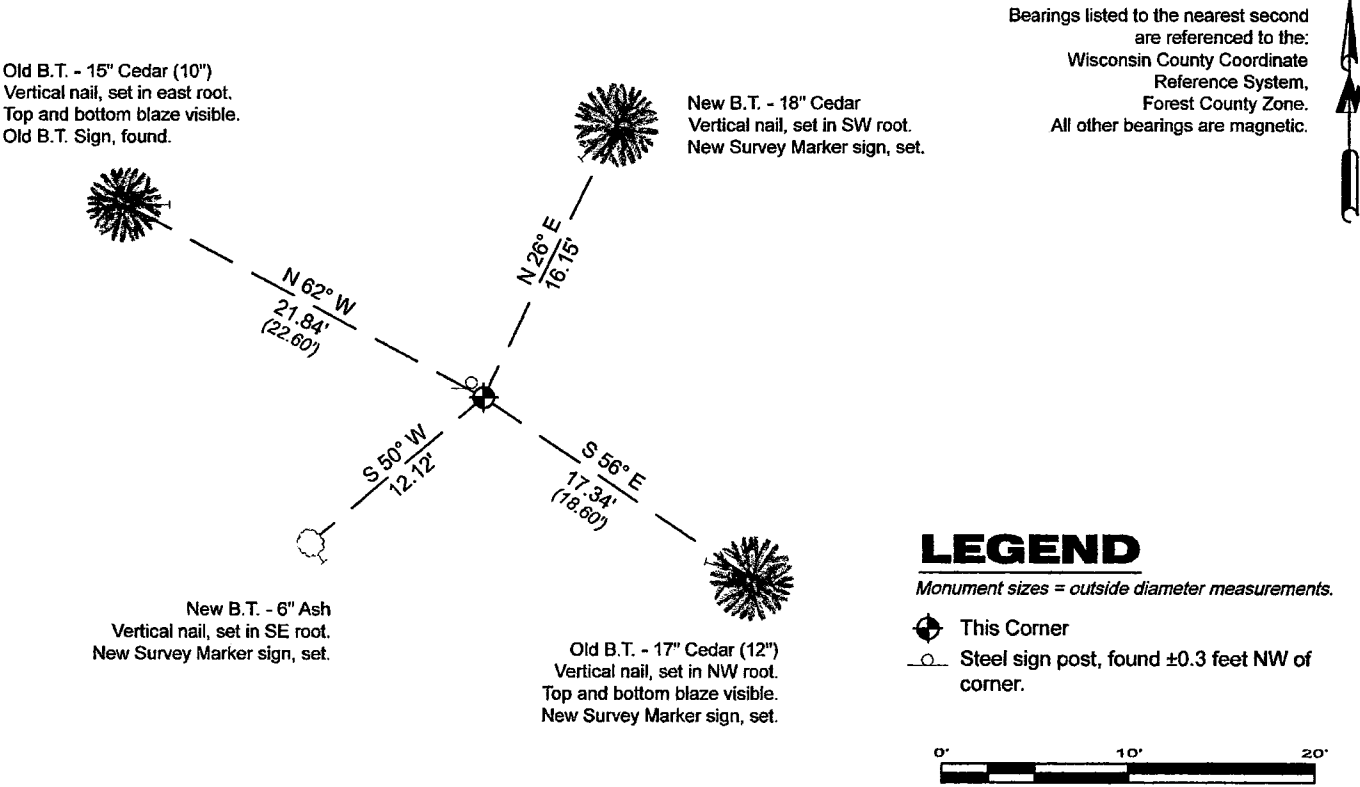
A-E 7.08(3)(b)

Original Surveyor: James McBride - August 10, 1859 to August 20, 1859  
Cedar 14 - N 72° W 35 Links, Cedar 8 - S 15° E 20 Links, Cedar 10 - S 54° E 23 Links, Cedar 10 - S 13° W 21 Links

See previous U.S.Public Land Survey Monument Record - R5 - March 21, 1984 - Surveyor 1558 - Milo E. Stefan.  
THENCE:

January 05, 2024 - I found a 2.25" diameter iron pipe with a 3.15" diameter brass cap, stamped to identify the corner location. I also found 2 of Stefan's bearing trees, alive and in good condition, and Stefan's sign post. The monument extends ±24" above grade, and is in a low wet cedar swamp. I established 2 new reference monuments as shown below.

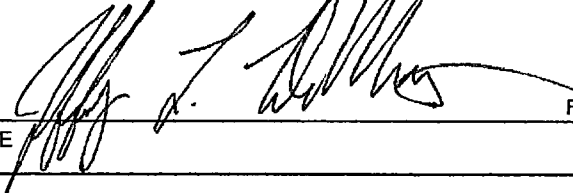
A-E 7.08(3)(c)(d) Plan view of corner with references to at least 4 witness monuments.

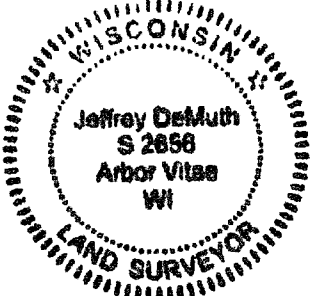


A-E 7.08(3)(e) 1984 Surveyor found a monument set by Genisot Engineering. In 2024, I found a monument as described above, as well as witnesses established by 1984 surveyor.

A-E 7.08(3)(f) I accept this monument in good faith as a FOUND PERPETUATED LOCATION of the corner.  
A-E 7.08(3)(g)(h) This corner was not determined through lost-corner-proportionate methods.

A-E 7.08(3)(i) I, Jeffrey L. DeMuth, Professional Land Surveyor No. S-2656, hereby certify that the corner location on this record was determined by me or under my direction and control, and that this U.S. Public Land Survey Monument Record is correct and complete to the best of my knowledge, and belief.

SIGNATURE  DATE February 12, 2024



43414190000

43414190000

R5

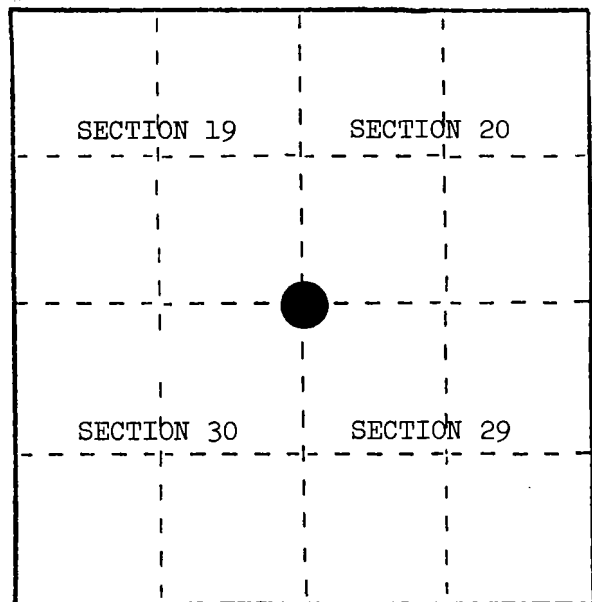
## U. S. PUBLIC LAND SURVEY MONUMENT RECORD

INSTRUCTIONS: This record shall show the location of the corner and shall include all of the following nine elements (a through i).

- (a) Identify the corner by reference to the U.S. public land survey system.

○ = Corner monument restored.

Section corner to Sections 19, 20, 29, and 30,  
T.34N., R.14E.



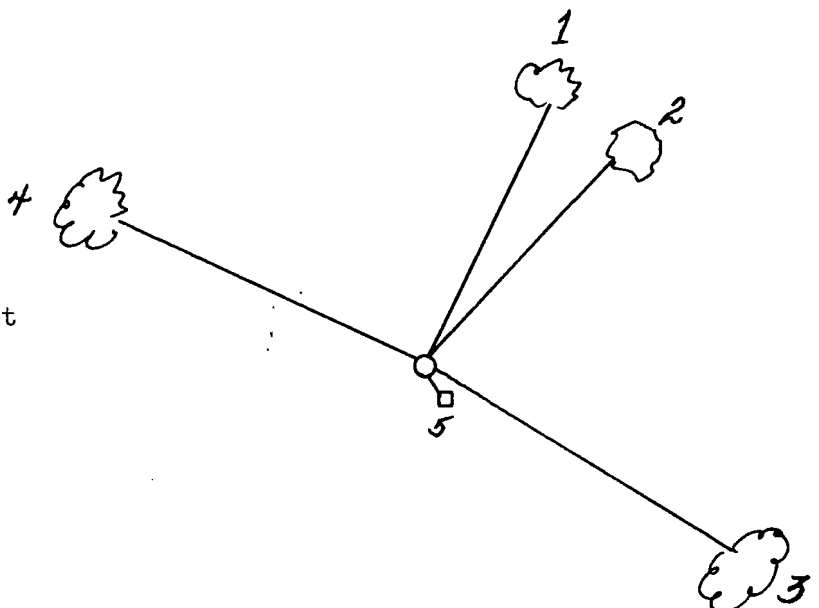
- (b) Describe any record evidence, monument evidence, occupational evidence, testimonial evidence or any other material evidence you considered, and whether the monument was found or placed.

Found monument in place, as set by Genisot Engineering in 1959, Document Number 82173.

- (c) In the plan view drawing below, provide reference ties to at least 4 witness monuments, or, if the location is within a municipality, to at least 2 witness monuments. (Witness monuments shall be made of concrete, natural stone, iron or other equally durable material.)  
Describe witness monuments.

- (d) Show a plan view drawing depicting the relevant monuments and reference ties which is sufficient in detail to enable accurate relocation of the corner monument if the corner monument is disturbed. Indicate north.

1. Cedar, 14", N.15°E., 12.50 feet
2. Cedar, 12", N.20°E., 12.20 feet
3. Cedar, 12", S.56°E., 18.60 feet
4. Cedar, 10", N.62°W., 22.60 feet
5. Steel Sign Post, Southeast, 1.50 feet



REGISTER'S OFFICE }  
Forest County, Wis.

Received for record this... 16th day  
of January... A.D., 1985 at  
... 2:30 o'clock... P... M. and

recorded in Vol. CORNER RESTORATIONS

on page R-5  
Paul Hickenbrenner  
REGISTER

43414190000

R-5

R5

(e) Describe any material discrepancy between the location of the corner as restored or reestablished and the location of that corner as previously restored or reestablished by distance and direction. Show the discrepancy on the plan view drawing under (d), above. Show the distances between the corner as previously restored or reestablished and (1) the corner as restored or reestablished, and (2) to at least 2 of the witness monuments shown on the drawing in (d), above.

(f) Was the corner restored through acceptance of (1) an obliterated evidence location, or, (2) a found perpetuated location?

A found perpetuated location.

(g&h) Was the corner reestablished through lost corner proportionate methods? If so, show the method, including the directions and distances to other public land survey corners used as evidence or used for proportioning in determining the corner location?

(i) I, Milo E. Stefan

(type or print name) certify that the corner location shown on this record was determined by me or under my direction and control and that this U.S. Public Land Survey Monument Record is correct and complete to the best of my knowledge and belief.

Milo E. Stefan  
Signature

3/21/84  
Date

Affix Land Surveyor Seal

