

CORTNEY BRITTEN CLEEREMAN
REGISTER OF DEEDS
FOREST COUNTY WI
PAGES: 1

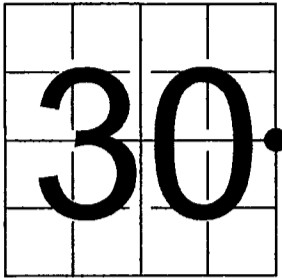
INDEX#: T5

U. S. PUBLIC LAND SURVEY MONUMENT RECORD

NOTE: This form is intended and designed to fulfill all requirements of Wisconsin Administrative Code, Chapter A-E 7.08 U.S. Public Land Survey Monument Record (3) (a-i)

A-E 7.08(3)(a) Identity of corner:
East 1/4 Corner Section 30,
Township 34 North, Range 14 East
of the Fourth Principal Meridian,
Town of Freedom, Forest County,
Wisconsin

WISCORS - FOREST COUNTY
N: 508,515.889 USft (XXX,XXX.XXX)
E: 867,083.801 USft (XXX,XXX.XXX)
Datum: NAD83 (2011)
GNSS Method RTK
GNSS Control WISCORS VRS



The coordinate value shown has been verified by the average of two or more GPS observations at a markedly different time. Coordinates shown in parenthesis are previously published values.

A-E 7.08(3)(b)

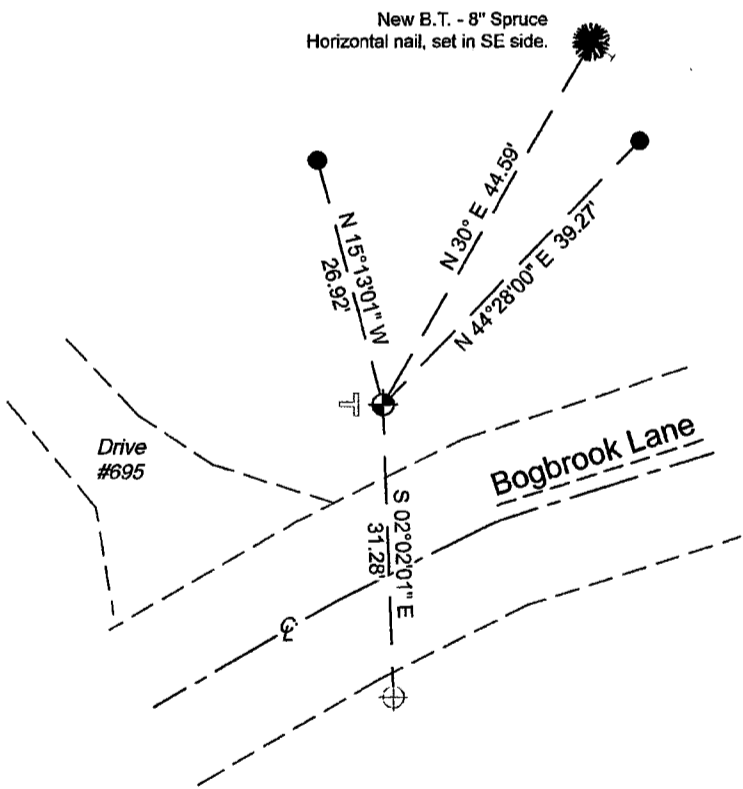
Original Surveyor: James McBride - August 10, 1859 to August 20, 1859
Hemlock 24 - S 41° W 12 Links, Hemlock 7 - S 60° E 6 Links

See previous U.S.Public Land Survey Monument Record - T5 - March 21, 1984 - Surveyor 1558 - Milo E. Stefan.
THENCE:

- 1985 - Surveyor 1651 - Alan D. Harrison - Indicates corner position as "2" brass capped monument - County file #341429-19851021.
- February 1, 2002 - Surveyor 2197 - Michael A. Trembl - indicates this position as "1 1/2" o.d. iron pipe found" on C.S.M. Vol. 6 Pg. 65.
- July 12, 2002 - Surveyor 2197 - Michael A. Trembl - indicates this position as "1 1/2" o.d. iron pipe found" on C.S.M. Vol. 6 Pg. 84-84A.

January 02, 2024 - I found a 2" diameter iron pipe near the north shoulder of Bogbrook Lane. I also found the reference monument mentioned by Winat on County file #341429-19820831. The monument is ±12" below grade. I established 3 new reference monuments as shown below.

A-E 7.08(3)(c)(d) Plan view of corner with references to at least 4 witness monuments.

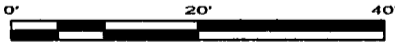


Bearings listed to the nearest second
are referenced to the:
Wisconsin County Coordinate
Reference System,
Forest County Zone.
All other bearings are magnetic.

LEGEND

Monument sizes = outside diameter measurements.

- ⊕ This Corner
- ⊥ Vinyl T-post, set ±2.5 feet West of corner
- 0.75" diameter X 18" long iron rod, weighing 1.5 lbs. per lineal foot, set
- ⊕ Reference monument, 2" diameter iron pipe with a brass cap, found.



A-E 7.08(3)(e) 1984 Surveyor found a monument set by Genisot Engineering. 1985 Surveyor found a 2" brass capped monument. 2002 Surveyor found a 1 1/2" iron pipe. In 2024 I found a 2" diameter iron pipe, and a brass capped, 2" diameter iron pipe reference monument.

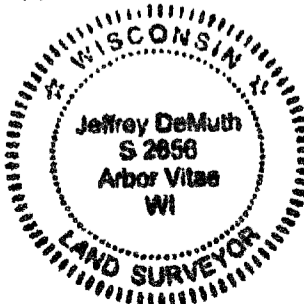
A-E 7.08(3)(f) I accept this monument in good faith as a FOUND PERPETUATED LOCATION of the corner.
A-E 7.08(3)(g)(h) This corner was not determined through lost-corner-proportionate methods.

A-E 7.08(3)(i) I, Jeffrey L. DeMuth, Professional Land Surveyor No. S-2656, hereby certify that the corner location on this record was determined by me or under my direction and control, and that this U.S. Public Land Survey Monument Record is correct and complete to the best of my knowledge, and belief.

SIGNATURE

February 12, 2024

DATE



43414302000

43414302000

T5

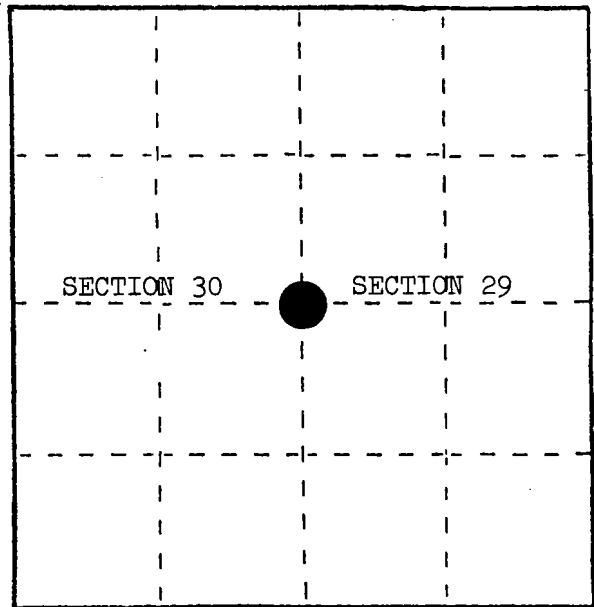
U. S. PUBLIC LAND SURVEY MONUMENT RECORD

INSTRUCTIONS: This record shall show the location of the corner and shall include all of the following nine elements (a through i).

- (a) Identify the corner by reference to the U.S. public land survey system.

○ = Corner monument restored.

Quarter corner to Sections 29 and 30, T.34N., R.14E.



- (b) Describe any record evidence, monument evidence, occupational evidence, testimonial evidence or any other material evidence you considered, and whether the monument was found or placed.

Found monument in place, as set by Genisot Engineering in 1959.

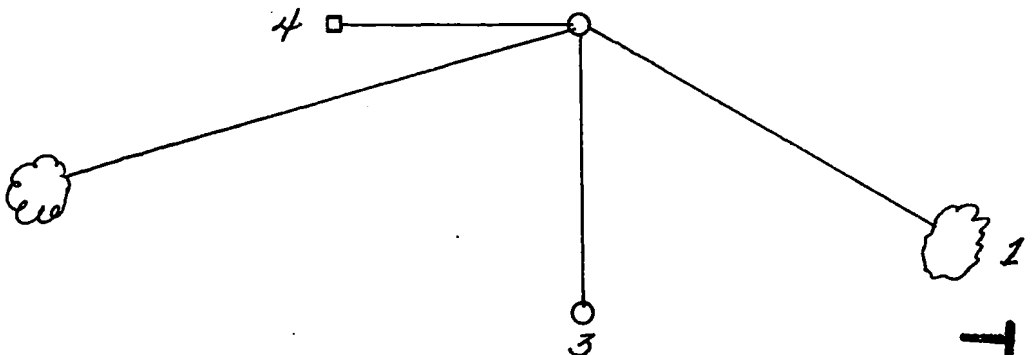
- (c) In the plan view drawing below, provide reference ties to at least 4 witness monuments, or, if the location is within a municipality, to at least 2 witness monuments. (Witness monuments shall be made of concrete, natural stone, iron or other equally durable material.)
Describe witness monuments.

- (d) Show a plan view drawing depicting the relevant monuments and reference ties which is sufficient in detail to enable accurate relocation of the corner monument if the corner monument is disturbed. Indicate north.

1. White Birch, 5", S.55°E., 46.45 feet
2. Black Cherry, 7", S.68°W., 67.00 feet
3. Witness Corner (2" Iron Pipe/Brass Cap), South, 32.81 feet
4. Steel Sign Post, West, 56.10 feet

REGISTER'S OFFICE }
Forest County, Wis. }

Received for record this... 16th day
of January... A.D., 1985 at
... 2:30 o'clock... P.... M. and
recorded in Vol. CORNER RESTORATIONS 2
on page T-5
Paul Hochbrenner
REGISTER



- (e) Describe any material discrepancy between the location of the corner as restored or reestablished and the location of that corner as previously restored or reestablished by distance and direction. Show the discrepancy on the plan view drawing under (d), above. Show the distances between the corner as previously restored or reestablished and (1) the corner as restored or reestablished, and (2) to at least 2 of the witness monuments shown on the drawing in (d), above.

- (f) Was the corner restored through acceptance of (1) an obliterated evidence location, or, (2) a found perpetuated location?

A found perpetuated location.

- (g&h) Was the corner reestablished through lost corner proportionate methods? If so, show the method, including the directions and distances to other public land survey corners used as evidence or used for proportioning in determining the corner location?

(i) I, Milo E. Stefan

(type or print name) certify that the corner location shown on this record was determined by me or under my direction and control and that this U.S. Public Land Survey Monument Record is correct and complete to the best of my knowledge and belief.

Milo E. Stefan
Signature

3/21/84
Date

Affix Land Surveyor Seal

